

ADDITIONS AND ALTERATIONS:  
EASTLEY EXPANSION OF BAGGAGE CLAIM FACILITY  
PORTLAND INTERNATIONAL JETPORT, PORTLAND, MAINE

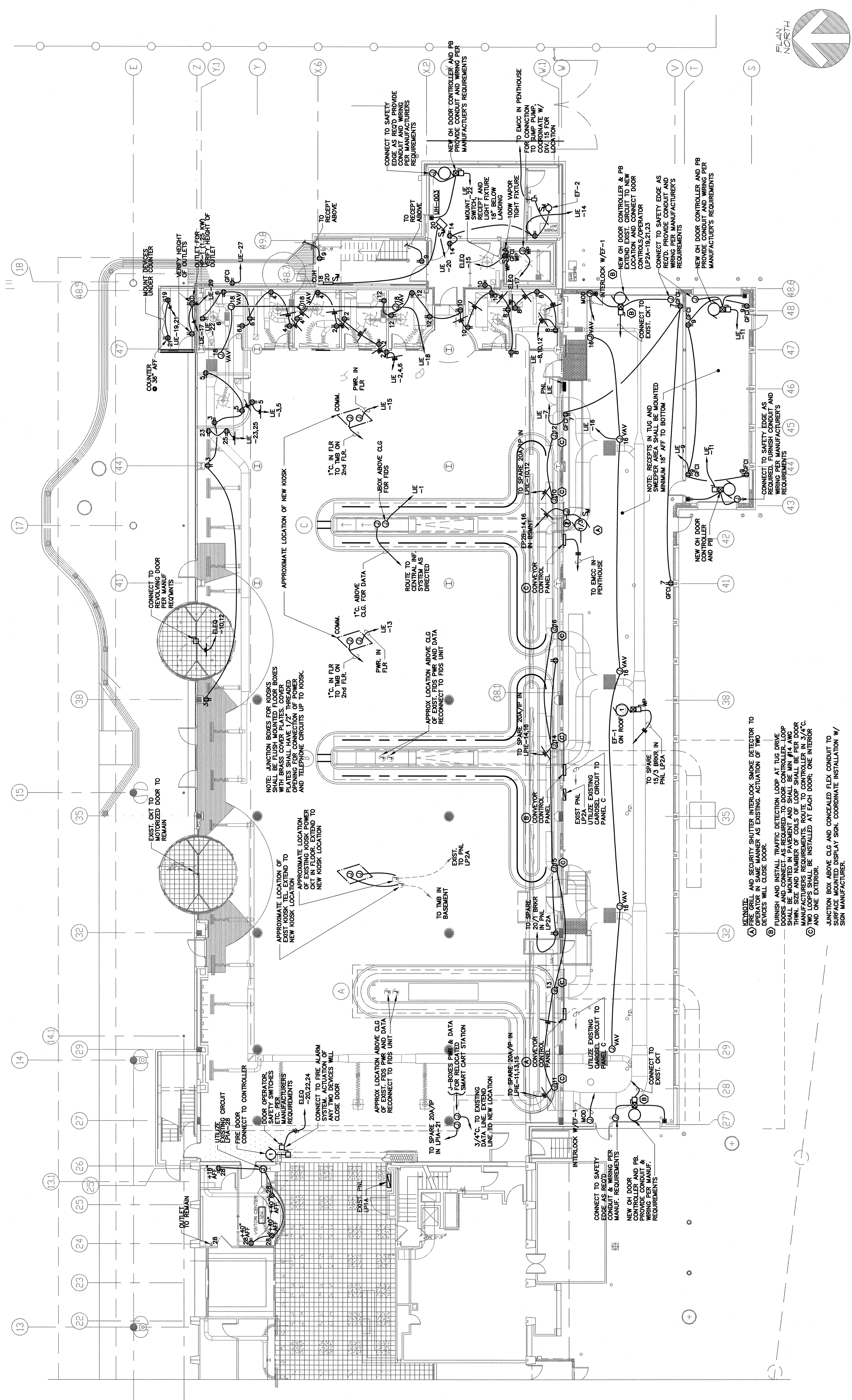


Phillip J. Doughty Assoc., Architects  
362 U.S. Route One, Falmouth, Maine 04103 • 207.781.5346

REV	DATE	DESCRIPTION	BY	CHKD	APP'D
1	APR 22, 2004	CONSTRUCTION SET	CF	WJH	CF
2	FEB 23, 2004	BID SUBMITTAL	CF	WJH	CF
3	FEB 23, 2004	DESCRIPTION	CF	WJH	CF



Portland, Maine  
147.775-2311 • FAX 147.775-6434  
www.dufresne-henry.com



**KEYNOTE:**

- (A) FIRE GRILL AND SECURITY SHUTTER INTERLOCK SMOKE DETECTOR TO OPERATOR IN SAME MANNER AS EXISTING. ACTUATION OF TWO DEVICES WILL CLOSE DOOR.
- (B) FURNISH AND INSTALL TRAFFIC DETECTION LOOP AT TUG DRIVE DOORS AND CONNECT AS REQUIRED TO DOOR CONTROLLER. LOOP SHALL BE 1/2" THICK AND 1/2" WIDE. NUMBER OF COILS OF LOOP SHALL BE PER DOOR MANUFACTURER'S REQUIREMENTS. ROUTE TO CONTROLLER IN 3/4" C. AND ONE EXTERIOR.
- (C) TWO LOOPS SHALL BE INSTALLED AT EACH DOOR: ONE INTERIOR AND ONE EXTERIOR.

JUNCTION BOX ABOVE CLG AND CONCEALED FLEX CONDUIT TO SURFACE MOUNTED DISPLAY SIGN. COORDINATE INSTALLATION W/ SIGN MANUFACTURER.

NOTE: MOUNTING BOXES FOR LOGS SHOULD BE FLUSH MOUNTED WITH BRASS COVER PLATES. COVER PLATES SHALL HAVE 1/2" THREADED GROUNDING CONDUIT TO WORKING AND TELEPHONE CIRCUITS UP TO KIOSK.

APPROXIMATE LOCATION OF NEW KIOSK LOCATION

APPROXIMATE LOCATION OF EXISTING KIOSK LOCATION

APPROXIMATE LOCATION OF EXISTING KIOSK LOCATION

APPROXIMATE LOCATION OF NEW KIOSK LOCATION

APPROXIMATE LOCATION OF NEW KIOSK LOCATION

APPROXIMATE LOCATION OF EXISTING KIOSK LOCATION

APPROXIMATE LOCATION OF NEW KIOSK LOCATION

APPROXIMATE LOCATION OF EXISTING KIOSK LOCATION

APPROXIMATE LOCATION OF NEW KIOSK LOCATION

APPROXIMATE LOCATION OF EXISTING KIOSK LOCATION

APPROXIMATE LOCATION OF NEW KIOSK LOCATION

APPROXIMATE LOCATION OF EXISTING KIOSK LOCATION

THIS DRAWING IS AN INSTRUMENT OF SERVICE AND SHALL REMAIN THE PROPERTY OF PDA ARCHITECTS. IT IS TO BE USED ONLY FOR THE PROJECT AND SITE SPECIFICALLY IDENTIFIED HEREON. IT IS NOT TO BE REPRODUCED, COPIED, OR TRANSMITTED IN ANY FORM OR BY ANY MEANS, ELECTRONIC OR MECHANICAL, WITHOUT THE WRITTEN PERMISSION OF PDA ARCHITECTS. ALL RIGHTS ARE RESERVED.