



Portland, Maine
Tel: (207) 775-3111 • Fax: (207) 775-8444
www.duffresne-henry.com

| REVISION | DATE | DESCRIPTION | CONTRACTOR SET | DATE |
|----------|--------------|------------------|----------------|--------------|
| 1 | APR 22, 2004 | CONSTRUCTION SET | CEU | APR 22, 2004 |
| 0 | FEB 23, 2004 | BD SUBMITTAL | CEU | FEB 23, 2004 |
| | | | CEU | |
| | | | CEU | |
| | | | CEU | |

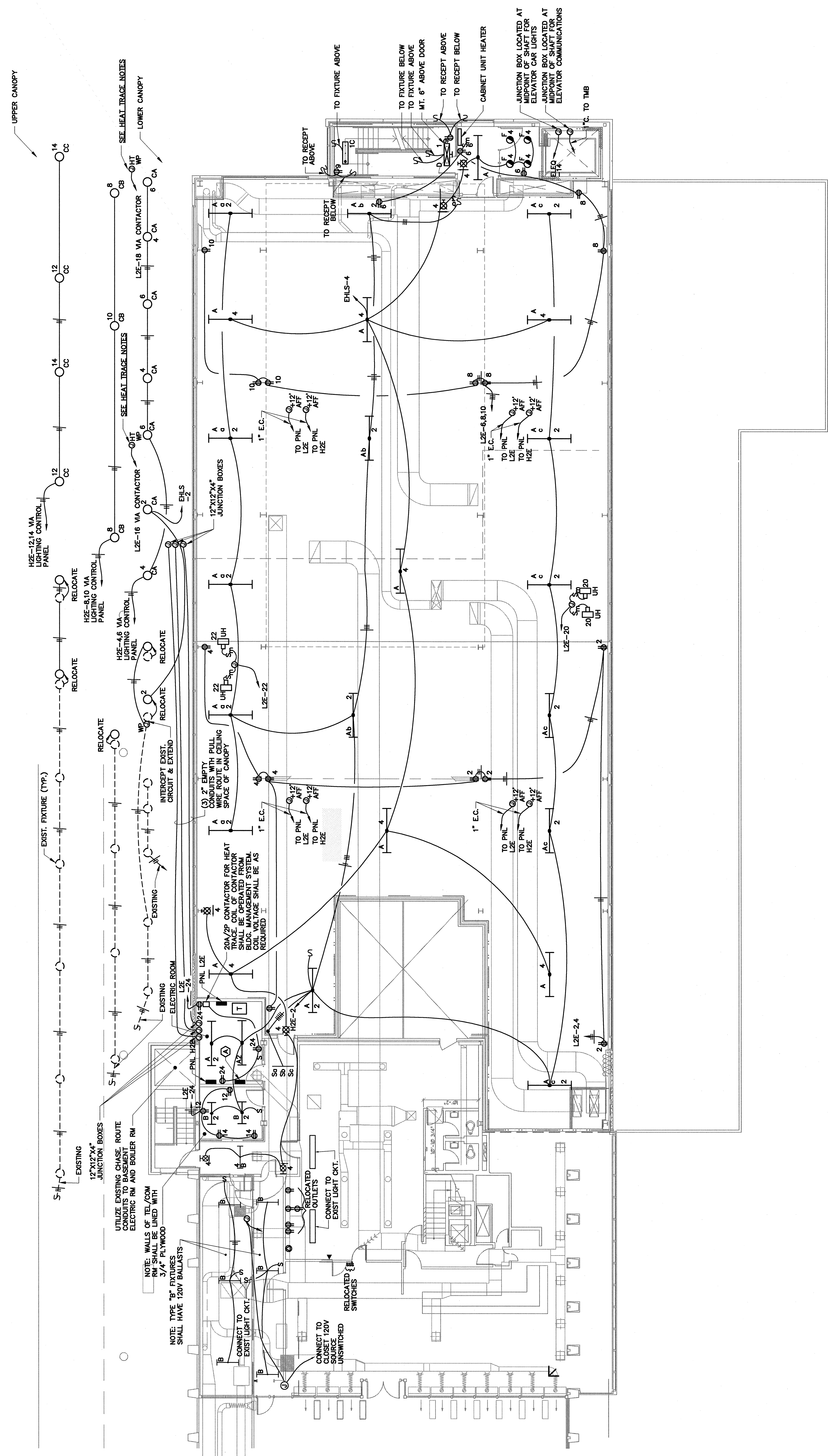
PDA Architects
367 U.S. Route One, Falmouth, Maine 04105 • 207.781.5346

Philip J. Doughty Assoc. • Architects

APPROVED: _____
CHECKED: _____
DRAWN: _____
DESIGNED BY: _____
DATE: JAN 2003
SCALE: 1/8" = 1'-0"

PORTLAND INTERNATIONAL JETPORT, PORTLAND, MAINE
ADDITIONS AND ALTERATIONS:
LIGHTING AND POWER PLAN
SECOND FLOOR

| | |
|-----------|---------|
| PROJ. NO. | 8200263 |
| SHEET NO. | E3 |



KEYNOTE:

NEW LIGHTING CONTROL PANEL
G.E. PROSYS I/M OR APPROVED EQUAL
PANEL CONTROL SYSTEM SHALL BE LON
24, 20AMP 120/277V RELAYS, POWER
SUPPLY AND INTERIOR ELECTRONICS FOR
CONTROLLING LIGHTING CIRCUITS
CONTROL PANEL TO NEW ENERGY MANAGEMENT
PANEL FURNISHED BY DIVISION 15 IN
NEW PENTHOUSE.

HEAT TRACE NOTES:

1. CONTRACTOR SHALL INSTALL SELF-REGULATING HEAT TRACE CABLE ON INTERIOR OF ROOF DRAIN. CABLE SHALL BE RAYCHEM RM-1X1 RATED FOR 12W/FT AT 120 VOLTS. PROVIDE REQUIRED POWER CONNECTION KIT AND WEATHERPROOF JUNCTION BOX. INSTALLATION SHALL BE PER MANUFACTURER'S REQUIREMENTS

NOTES FOR CANOPY LIGHTING:

1. CIRCUITS FOR NEW TYPES "CA", "CB", AND "CC" CANOPY FIXTURES SHALL BE CONTROLLED FROM RELAYS IN LIGHTING CONTROL PANEL. ADJACENT FIXTURES SHALL BE ON SEPARATE CIRCUITS.

2. FIXTURES SHALL MATCH EXISTING.
TYPE "CA" SHALL BE RECESSED IN UNDERSIDE OF LOWER CANOPY
TYPE "CB" SHALL BE SURFACE MOUNTED ON TOP OF LOWER CANOPY
TYPE "CC" SHALL BE RECESSED IN UNDERSIDE OF UPPER CANOPY

3. REFER TO CANOPY DRAWINGS FOR CANOPY FRAMING DETAILS.

THIS DRAWING IS AN INSTRUMENT OF SERVICE AND SHALL REMAIN THE PROPERTY OF PDA ARCHITECTS. IT IS TO BE USED ONLY FOR THE PROJECT AND SITE SPECIFICALLY IDENTIFIED HEREON. IT IS TO BE KEPT IN CONFIDENCE AND NOT REPRODUCED, COPIED, OR TRANSMITTED IN ANY MANNER WITHOUT THE WRITTEN CONSENT OF PDA ARCHITECTS. ARCHITECTS OR CONTRACTORS ARE NOT TO BE HELD RESPONSIBLE FOR ANY ERRORS OR OMISSIONS IN THIS DRAWING.