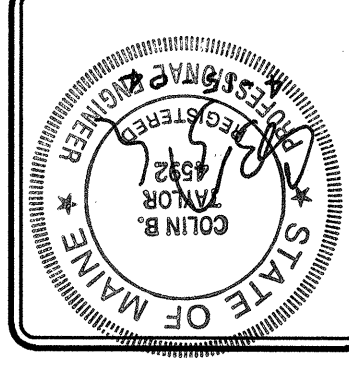


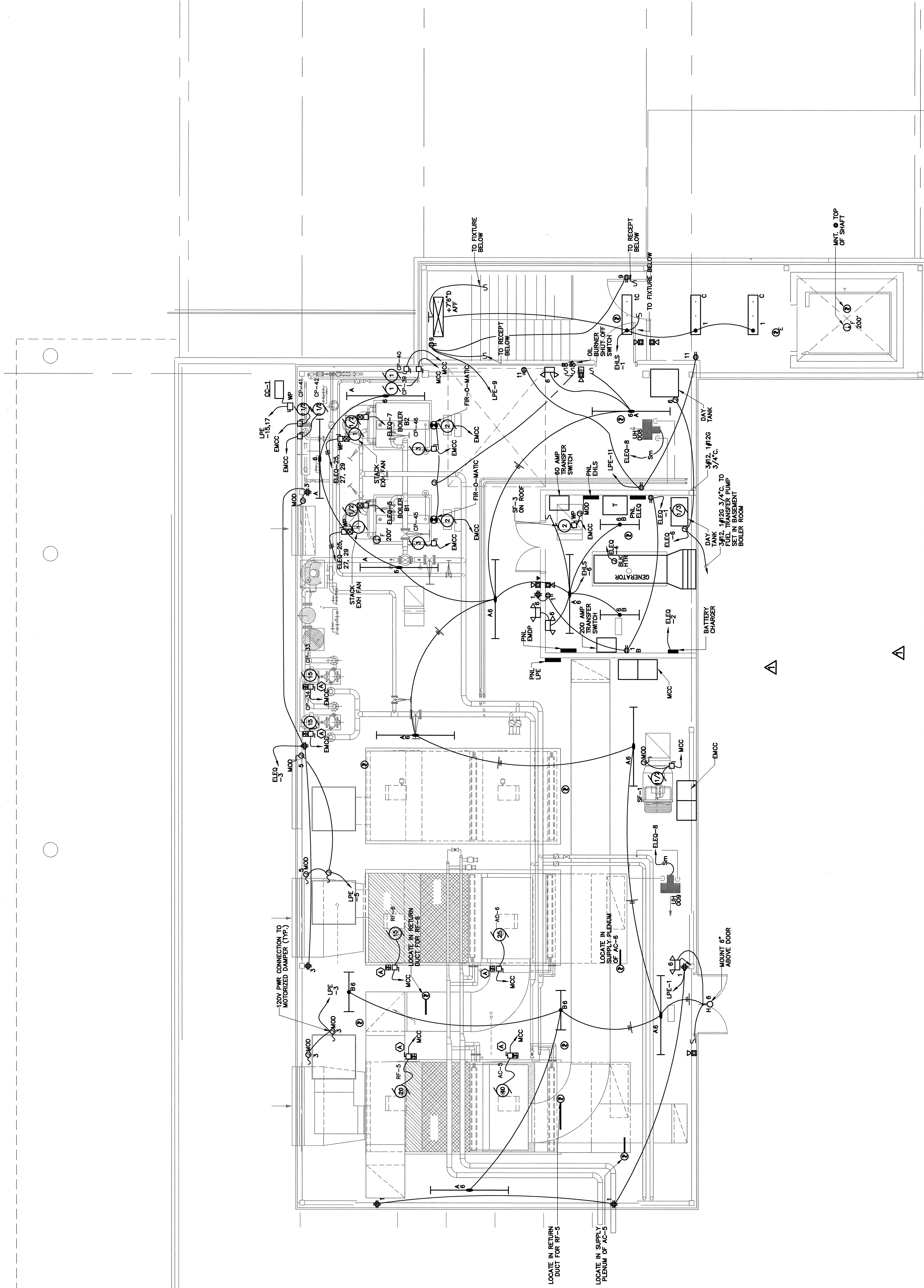
DATE:	APR 22, 2024
SCALE:	1/4" = 1'-0"
DESIGNER:	WJ
CHECKED:	WJ
APPROVED:	

ADDITIONS AND ALTERATIONS:
 EASTLY EXPANSION OF BAGGAGE CLAIM FACILITY
 PORTLAND INTERNATIONAL JETPORT, PORTLAND, MAINE
 PHILLIP J. DOUGHTY ASSOC. ARCHITECTS
 362 U.S. ROUTE ONE, FALMOUTH, MAINE 04103 • 207.781.5346



REVISION	DATE	DESCRIPTION
1	APR 22, 2024	CONSTRUCTION SET
0	MAY 19, 2024	BID SUBMITTAL
0	FEB 19, 2024	REVISED

Dufresne-Henry
 Portland, Maine
 781.207.7752 • FAX 207.775.6434
 www.dufresne-henry.com



- NOTES:**
1. LOCATION OF LIGHT FIXTURES ARE APPROXIMATE. COORDINATE LOCATION W/ DIV 15 TO AVOID CONFLICTS WITH DUCT WORK AND FRING.
 2. COORDINATE LOCATION OF DISCONNECT SWITCHES WITH EQUIPMENT BEING INSTALLED.
 3. REFER TO ONE-LINE DIAGRAM SHIT E-7 FOR CONDUIT AND WIRE SIZES TO MOTORS FED FROM MCC
 4. COORDINATE POWER CONNECTIONS TO MOTORIZED DAMPERS W/DIVISION 15 AND PROVIDE AS NECESSARY.
- KEYNOTE:**
- (A) WFD AND BYPASS CONTACTOR FURNISHED BY DIVISION 15. COORDINATE W/JUNCTION BOXES AND INTERCONNECTING ALL POWER WIRING AND INTERCONNECTING CONDUIT TO EQUIPMENT FURNISHED BY DIVISION 15. COORDINATE ALL ADDITIONAL WIRING TO BE FURNISHED AND INSTALLED BY DIVISION 16.
 - (B) AT EACH DAY TANK PROVIDE A CONTROL RELAY WITH 120V. COIL AND 2 FORM 'C' CONTACTS. CONNECT RELAY SUCH THAT COIL IS ENERGIZED VIA ONE SET OF CONTACTS AND ONE SET OF CONTACTS ON FUEL SUPPLY LINE IS ENERGIZED AND WHEN DAY TANK IS AT LOW LEVEL RELAY IS ENERGIZED AND SOLENOID ON FUEL SUPPLY LINE IS ENERGIZED OPEN VIA ONE SET OF CONTACTS. IN ADDITION TRANSFER SIGNALS (S) SET IN THE BASEMENT BOILER ROOM VIA THE OTHER SET OF FORM 'C' CONTACTS. WIRE THE CONTROLS FOR EACH DAY TANK IN PARALLEL SUCH THAT A LOW LEVEL IN EITHER DAY TANK WILL START THE FUEL OIL TRANSFER PUMPS.

THIS DRAWING IS AN INSTRUMENT OF SERVICE AND SHALL REMAIN THE PROPERTY OF PHILLIP J. DOUGHTY ASSOCIATES, ARCHITECTS. IT IS TO BE USED ONLY FOR THE PROJECT AND SITE SPECIFICALLY IDENTIFIED HEREON. IT IS NOT TO BE REPRODUCED, COPIED, OR TRANSMITTED IN ANY FORM OR BY ANY MEANS, ELECTRONIC OR MECHANICAL, INCLUDING PHOTOCOPYING, RECORDING, OR BY ANY INFORMATION STORAGE AND RETRIEVAL SYSTEM, WITHOUT THE WRITTEN PERMISSION OF PHILLIP J. DOUGHTY ASSOCIATES, ARCHITECTS.