



Portland, Maine  
Tel: (207) 775-2111 • Fax: (207) 775-5434  
www.dufresne-henry.com

REV/NO	DATE	DESCRIPTION	BY	CHECKED	DATE
1	APR 22, 2024	CONSTRUCTION SET	CEJ	UMH	CEJ
2	FEB 23, 2024	BID SUBMITTAL	CEJ		

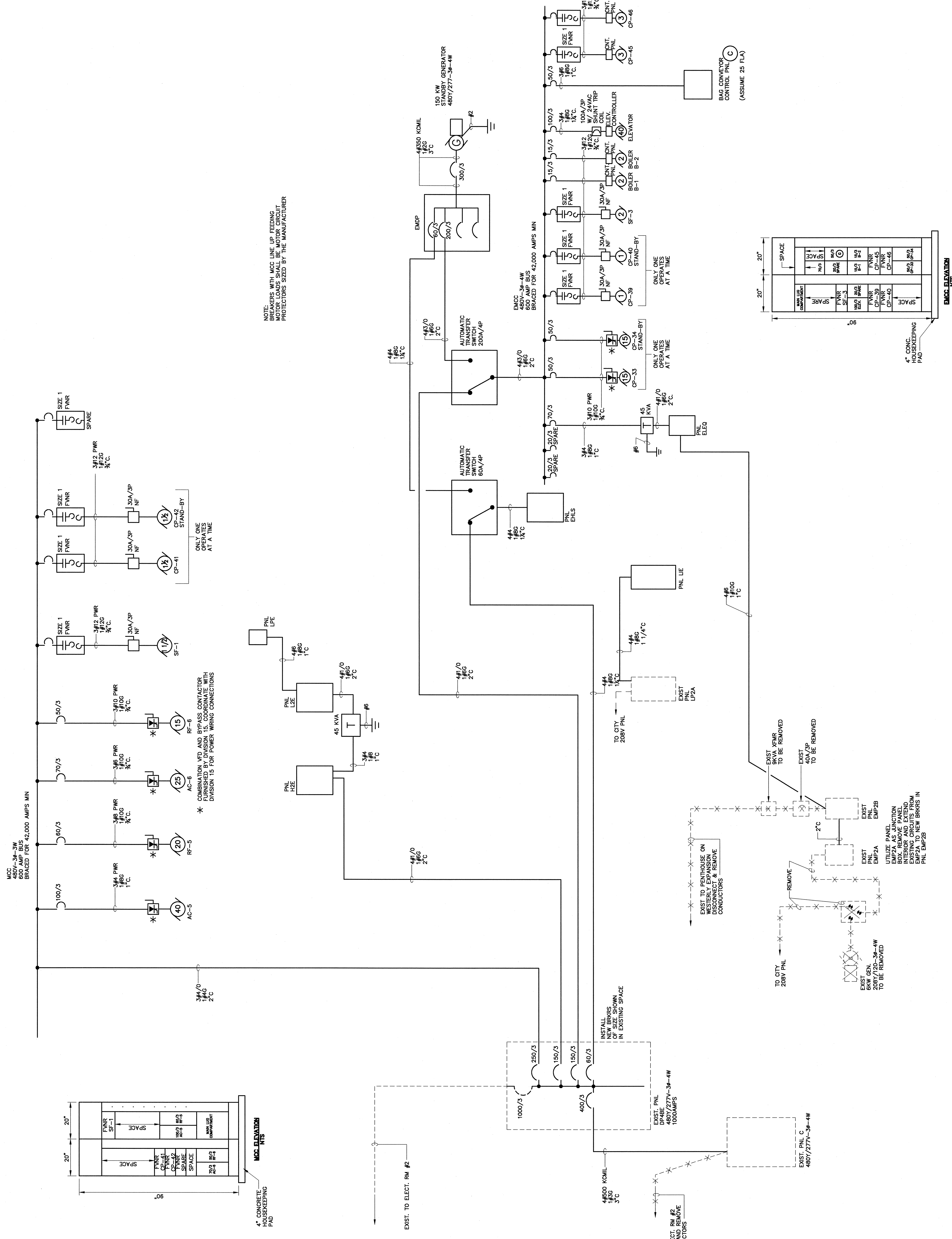
PHILIP J. DOUGHTY ASSOC., ARCHITECTS  
302 U.S. ROUTE ONE, FALMOUTH, MAINE 04103 • 207.781.8348

STATE OF MAINE  
REGISTERED PROFESSIONAL ARCHITECT  
NO. 10858

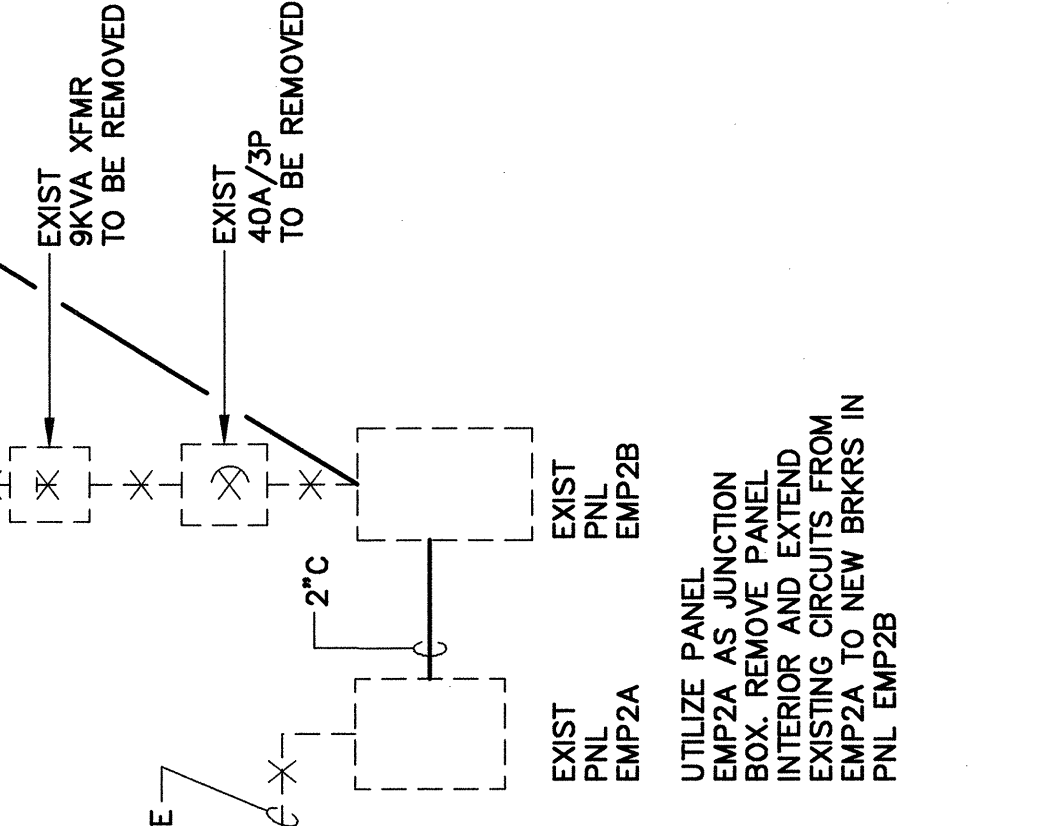
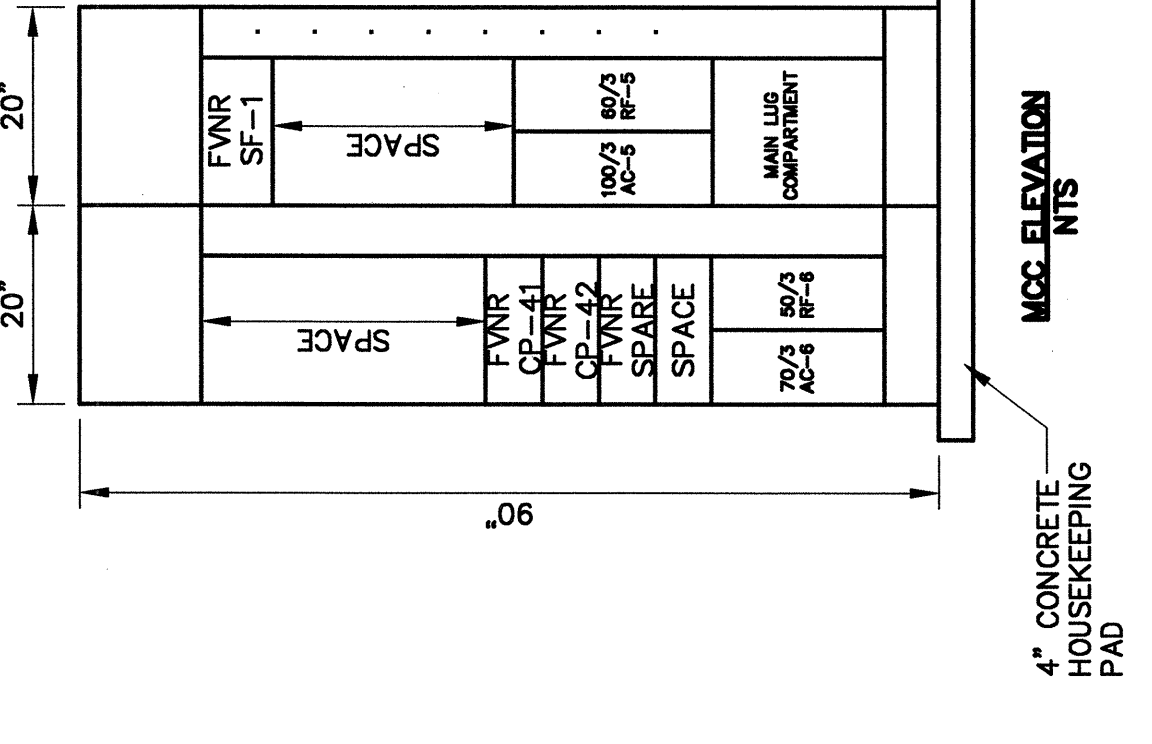
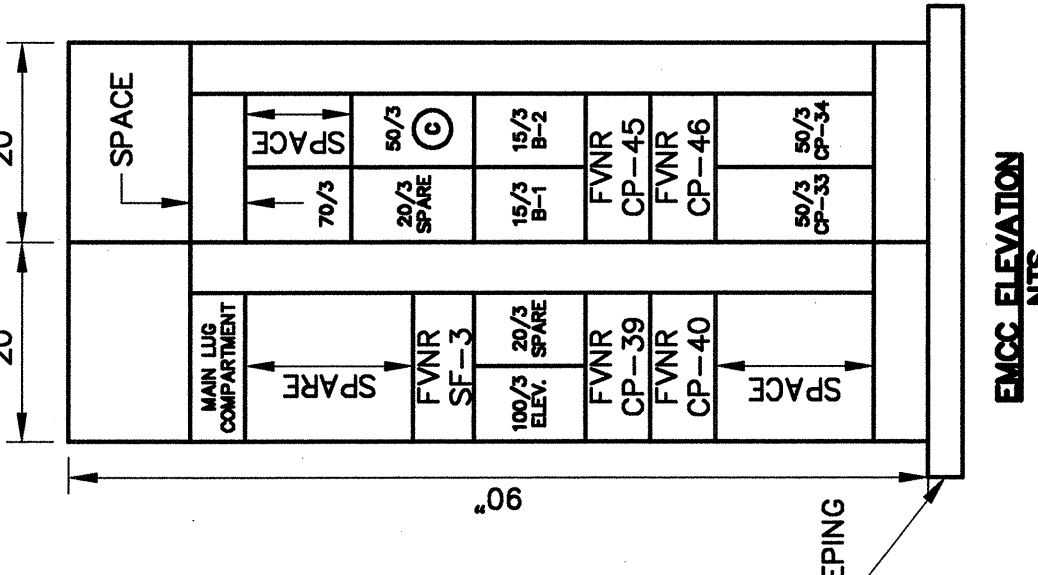
SCALE: NONE
DATE: JUNE 2023
DESIGNED BY: BJD
DRAWN BY: BJD
CHECKED BY: [Signature]
APPROVED BY: [Signature]

ONE LINE DIAGRAM  
EASTERN EXPANSION OF BAGGAGE CLAIM FACILITY  
PORTLAND INTERNATIONAL AIRPORT, PORTLAND, MAINE

SHEET NO. 3  
PROJECT NO. 2300066  
DATE: 06/2023



NOTE: BREAKERS WITH MCS LINE UPS FEEDING MOTORS SHALL BE MOTOR CIRCUIT PROTECTORS SIZED BY THE MANUFACTURER



THIS DRAWING IS AN INSTRUMENT OF SERVICE AND SHALL REMAIN THE PROPERTY OF PHILIP J. DOUGHTY ASSOCIATES, ARCHITECTS. ANY REPRODUCTION OR TRANSMISSION OF THIS DRAWING WITHOUT THE WRITTEN PERMISSION OF PHILIP J. DOUGHTY ASSOCIATES, ARCHITECTS IS STRICTLY PROHIBITED. ANY REPRODUCTION OR TRANSMISSION OF THIS DRAWING WITHOUT THE WRITTEN PERMISSION OF PHILIP J. DOUGHTY ASSOCIATES, ARCHITECTS IS STRICTLY PROHIBITED.