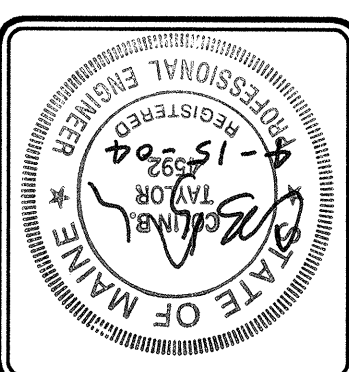


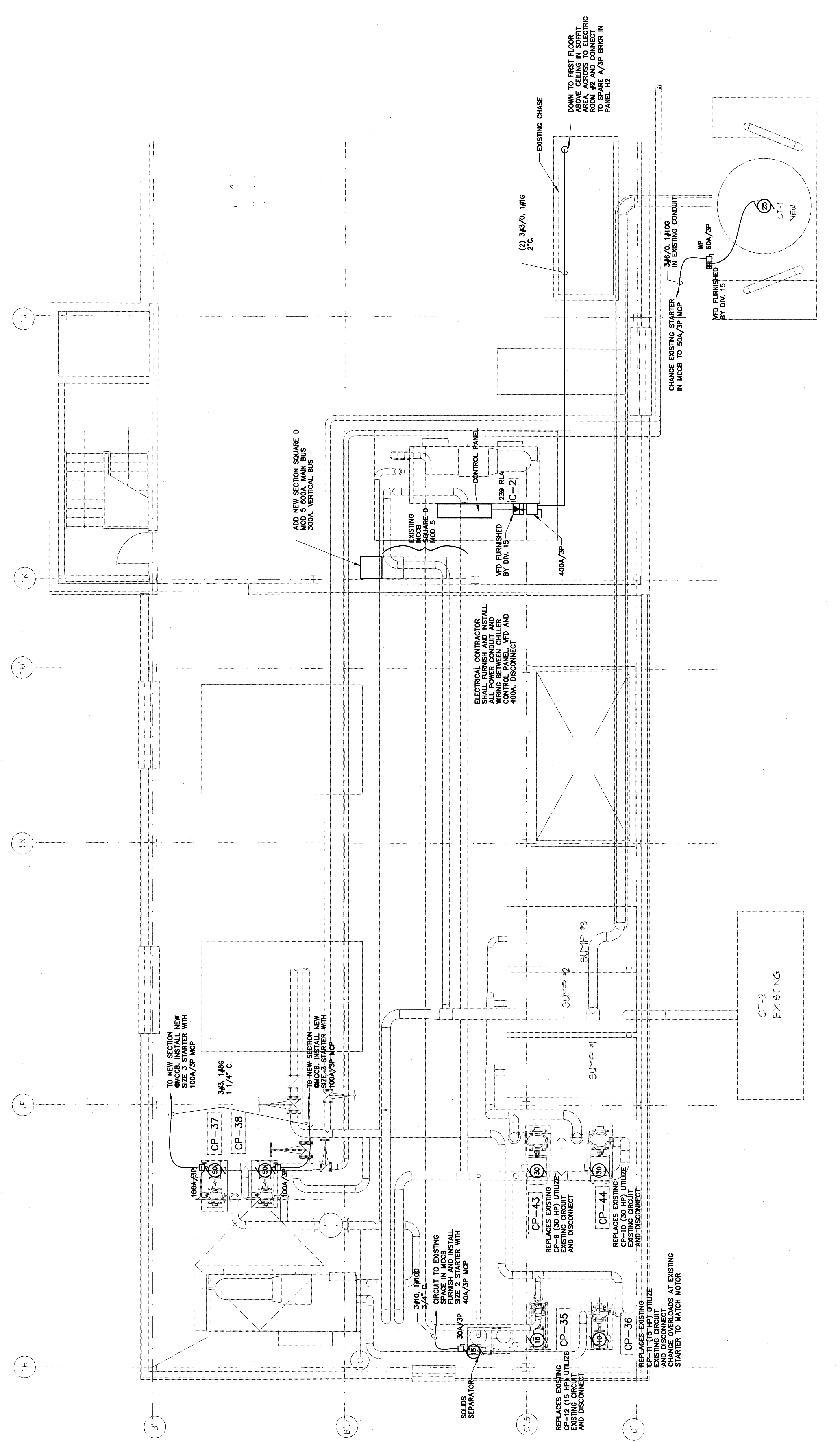
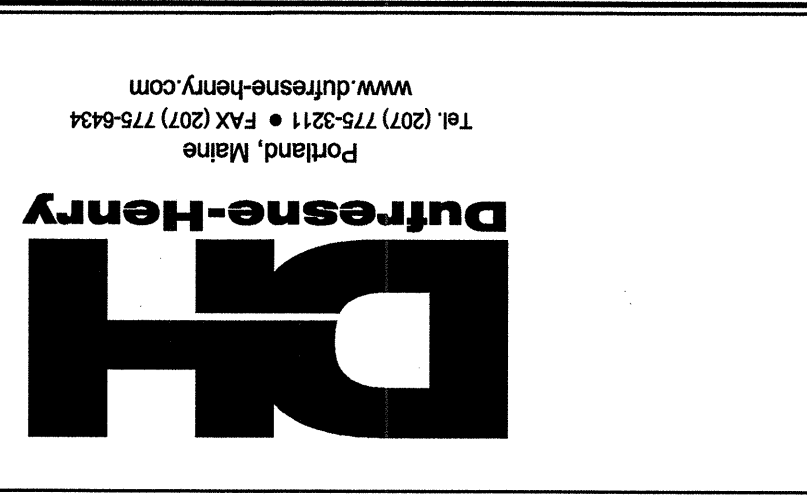
SCALE: 1/4" = 1'-0"
DATE: JUNE 2003
DESIGNED BY: JWH
DRAWN BY: JWH
CHECKED BY: JWH
APPROVED BY: JWH



PHILLIP J. DOUGHTY ASSOC., ARCHITECTS
362 U.S. ROUTE ONE, FALMOUTH, MAINE 04105 • 207.781.8348

EASTERNLY EXPANSION OF BAGGAGE CLAIM FACILITY
PORTLAND INTERNATIONAL AIRPORT, PORTLAND, MAINE
WEST PENTHOUSE ELECTRICAL PLAN

REVISION	DATE	APPROVD	DESCRIPTION
1	APR 22, 2004	JWH	CONSTRUCTION SET
2	MAY 19, 2004	JWH	ADDITION 2



THESE PLANS ARE THE PROPERTY OF PHILLIP J. DOUGHTY ASSOCIATES, INC. AND ARE TO BE USED ONLY FOR THE PROJECT AND SITE SPECIFICALLY IDENTIFIED HEREON. ANY REUSE OR MODIFICATION OF THESE PLANS WITHOUT THE WRITTEN CONSENT OF PHILLIP J. DOUGHTY ASSOCIATES, INC. IS PROHIBITED.