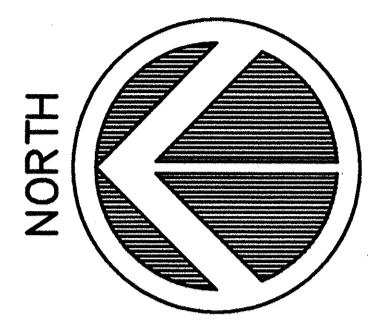
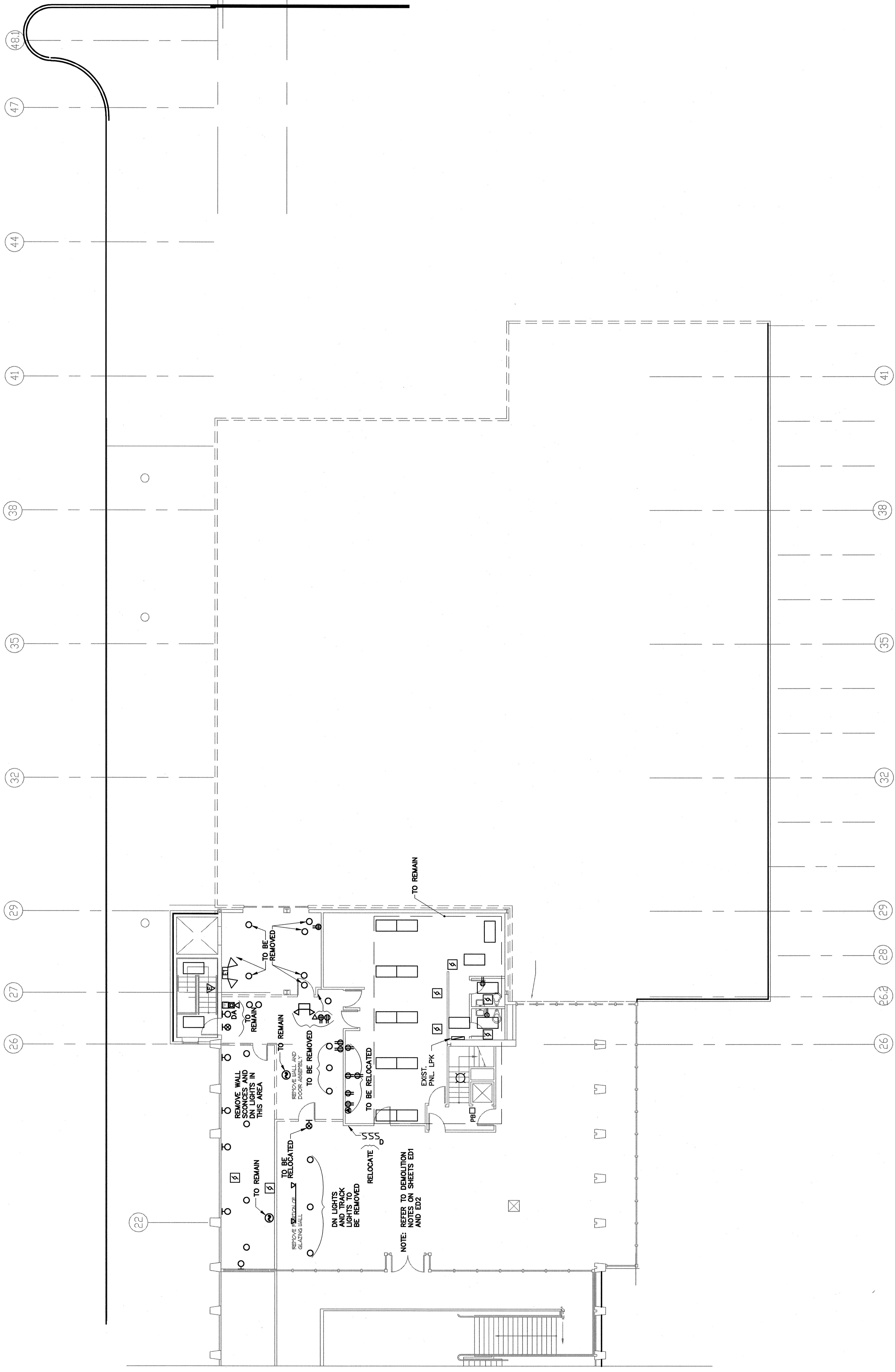


DEMOLITION NOTES

- D1 - REMOVE AND DISCONNECT ALL EXISTING ELECTRICAL EQUIPMENT WITHIN AREAS INDICATED, UNLESS OTHERWISE NOTED TO REMAIN, INCLUDING LIGHTING FIXTURES, SWITCHES, RECEPTACLES, EXPOSED CONDUIT, BRANCH CIRCUIT WIRING, SURFACE AND FLUSH DEVICE BOXES, DEVICE PLATES, ETC. ALL EXPOSED ABANDONED CONDUCTORS AND CONDUITS SHALL BE REMOVED. WHERE COMPLETE REMOVAL IS NOT POSSIBLE REMOVE ALL WIRING FROM UNITS, BOXES, AND TRAYS AND ABANDON ALL CONDUITS AS REQUIRED. COORDINATE REMOVAL WITH ENGINEER.
- D2 - EXISTING ELECTRICAL EQUIPMENT NECESSARY FOR EXISTING INSTALLATION, BUT PASSING THROUGH THE RENOVATED AREA, SHALL BE TEMPORARILY REHING AND PROTECTED DURING CONSTRUCTION RESTORING, IF INTERRUPTED. ALL CONDUITS, BRANCH CIRCUITS AND FEEDERS PASSING THROUGH RENOVATED AREAS AND SERVING UNDISTURBED AREAS.
- D3 - EXISTING CONDUIT FOUND TO BE REUSABLE MAY BE USED. ALL OTHER MATERIAL SHALL BE REMOVED FROM THE JOB SITE UNLESS OTHERWISE DIRECTED BY THE ENGINEER.
- D4 - REMOVE EXISTING TELEPHONE WIRING AND BRANCH CIRCUITS WITHIN WALLS BEING REMOVED. COORDINATE DEMOLITION WITH GENERAL CONTRACTOR PRIOR TO REMOVAL.
- D5 - PARTIAL BRANCH CIRCUIT WIRING DENOTING EXISTING CONTROL OR SWITCHING IS SHOWN FOR REFERENCE/CLARIFICATION ONLY AND IS NOT TO BE CONSIDERED. TO APLY COMPLETE DEMOLITION OF THIS WIRING, THE INTERCONNECTION OF CONTROL DEVICE AND EQUIPMENT CONTROLLED IS DIAGRAMMATIC ONLY.

- D6 - ALL BRANCH CIRCUITS SHALL BE ROUTED TO EXISTING OR NEW PANELS AS DETERMINED IN THE FIELD, AS INDICATED ON THE DRAWINGS OR AS DIRECTED BY THE ENGINEER.
- D7 - CONTRACTOR SHALL CARRY ALL COSTS RELATING TO REMOVAL AND LAWFUL DISPOSAL OF ELECTRICAL EQUIPMENT, LIGHTING FIXTURES, CONDUIT, WIRING AND ASSOCIATED DEVICES/HARDWARE. PRIOR TO ACTUAL REMOVAL OF ELECTRICAL EQUIPMENT, CONTRACTOR SHALL COORDINATE WITH OWNER FOR POSSIBLE SALVAGE OF ANY OF THE EQUIPMENT.
- D8 - EQUIPMENT LAYOUT AND EXACT LAYOUT OF NEW LIGHTING FIXTURES SHALL BE DIRECTED BY THE ENGINEER/OWNER.
- D9 - THE ELECTRICAL DEVICES AND LIGHTING FIXTURES INDICATED ON THIS DRAWING REPRESENT THE CONTRACTOR'S PROPOSED DEMOLITION AND REMOVAL. THE CONTRACTOR SHALL VERIFY THE ENGINEER AND DO NOT REPRESENT ALL EQUIPMENT AND WIRING WITHIN THE DEMOLITION AREA. THIS DRAWING HAS BEEN PREPARED TO ASSIST THE CONTRACTOR IN PRICING DEMOLITION WORK. THE CONTRACTOR SHALL VERIFY THE LOCATION AND CONDITION OF ALL EXISTING ELECTRICAL EQUIPMENT AND THE EXTENSION WILL BE PERMITTED BECAUSE OF COMPLIANCE WITH THIS REQUIREMENT.
- D10 - THE ELECTRICAL CONTRACTOR SHALL TAKE INTO ACCOUNT IN FILING THEIR BID, THE OBLIGATION TO PROVIDE FOR THE DISMANTLING AND REMOVAL OR MODIFICATION, OF EXISTING ELECTRICAL EQUIPMENT, LIGHTING, CONDUIT, WIRING AND RELATED ITEMS FOR THEIR REPLACEMENT OR MODIFICATION AS HEREIN SPECIFIED ON AS WAY REASONABLY BE IMPLIED.



SECOND FLOOR
SCALE: 1/8" = 1'-0"

THIS DRAWING IS AN INSTRUMENT OF SERVICE AND SHALL REMAIN THE PROPERTY OF PHILIP J. DOUGHTY ARCHITECTS. IT SHALL NOT BE REPRODUCED, COPIED, OR TRANSMITTED IN ANY FORM OR BY ANY MEANS, ELECTRONIC OR MECHANICAL, WITHOUT THE WRITTEN PERMISSION OF PHILIP J. DOUGHTY ARCHITECTS. ARCHITECTS DO NOT WARRANT ANY LIABILITY ASSUMED.

PH
Dufresne-Henry
Portland, Maine
Tel: (207) 775-3211 • Fax: (207) 775-4343
www.dufresne-henry.com

REVISION	DESCRIPTION	DATE
1	CONSTRUCTION SET	APR 22, 2024
2	BID SUBMITTAL	FEB 25, 2024



ELECTRICAL DEMOLITION PLAN
SECOND FLOOR
EASTERN EXPANSION OF BAGGAGE CLAIM FACILITY
PORTLAND INTERNATIONAL AIRPORT, PORTLAND, MAINE

DATE: June 2023
SCALE: 1/8" = 1'-0"
DESIGNED BY: [Signature]
DRAWN BY: BJD
CHECKED BY: [Signature]
APPROVED BY: [Signature]

SHEET NO. 8
800083
ED2

PDA Architects 362 U.S. Route One, Falmouth, Maine 04105 • 207.781.5346
Philip J. Doughty Assoc. Architects