

PROJ	000-008
SHT	000-008
OF	
SHEET NO.	D4

APPROVED:	
CHECKED:	
DATE:	FEB 2004
DESIGNED:	PM
DRAWN:	PM
SCALE:	1/8" = 1'-0"

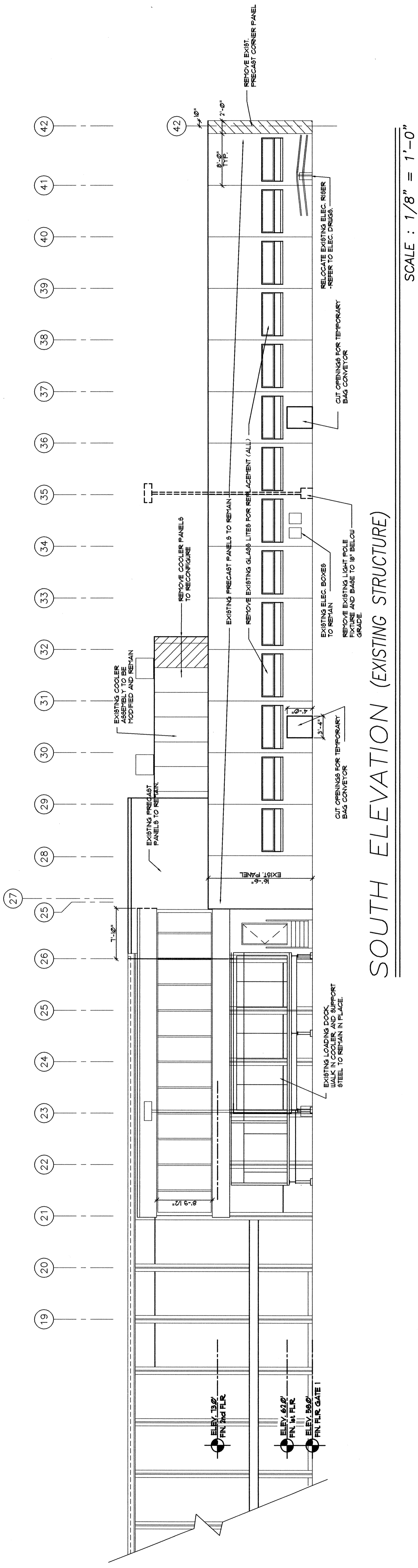
PHILIP J. DOUGHTY ASSOC. ARCHITECTS  
 302 U.S. ROUTE ONE, FALMOUTH, MAINE 04105 • 207.781.5346

PHILIP J. DOUGHTY ASSOC. ARCHITECTS  
 PORTLAND INTERNATIONAL AIRPORT, PORTLAND, MAINE

ADDITIONS AND ALTERATIONS  
 EASTERN EXPANSION OF BAGGAGE CLAIM FACILITY

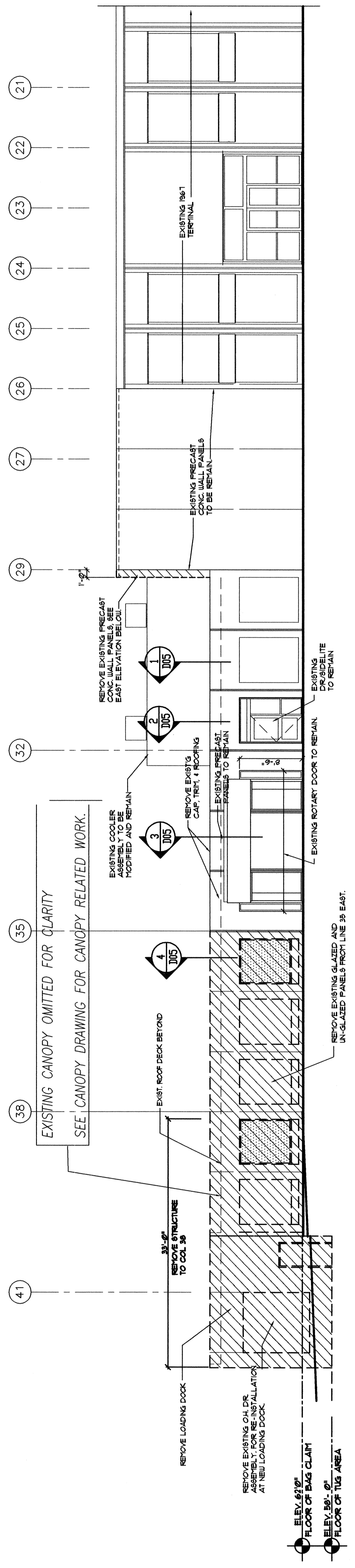
DEMOLITION ELEVATIONS

REVISION	DATE	DESCRIPTION
1	4/22/04	CONFORMED DRAWINGS ISSUED FOR CONSTRUCTION
0	FEB 29, 2004	BID SUBMITTAL
		JMF
		YDA
		DRYAN
		CHECKED
		APP'D



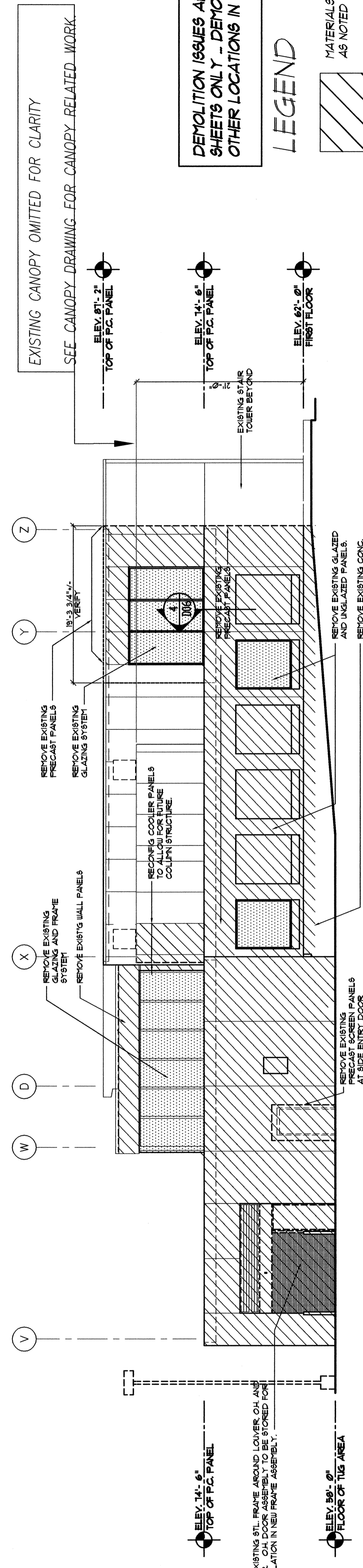
SOUTH ELEVATION (EXISTING STRUCTURE)

SCALE : 1/8" = 1'-0"



NORTH ELEVATION (EXISTING STRUCTURE)

SCALE : 1/8" = 1'-0"

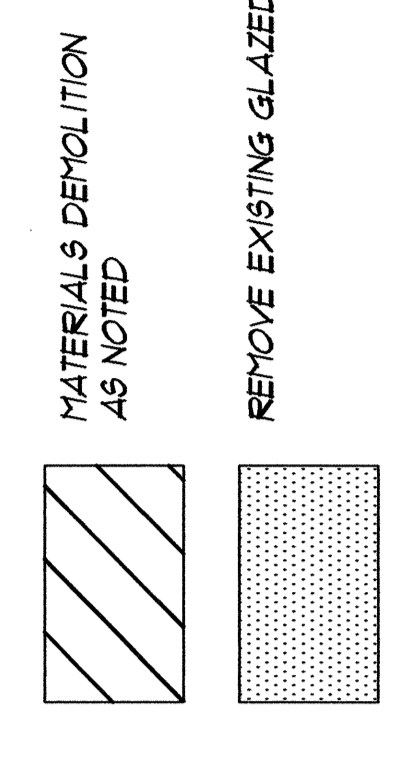


EAST ELEVATION (EXISTING STRUCTURE)

SCALE : 1/8" = 1'-0"

DEMOLITION ISSUES ARE NOT RELEGATED TO "D" SHEETS ONLY - DEMOLITION ISSUES ARE SHOWN ON OTHER LOCATIONS IN THE CONTRACT DOCUMENTS.

LEGEND



THIS DRAWING IS AN INSTRUMENT OF SERVICE AND SHALL REMAIN THE PROPERTY OF PHILIP J. DOUGHTY ASSOCIATES, INC. IT IS TO BE USED ONLY FOR THE PROJECT AND SITE SPECIFICALLY IDENTIFIED HEREON. IT IS NOT TO BE REPRODUCED, COPIED, OR TRANSMITTED IN ANY FORM OR BY ANY MEANS, ELECTRONIC OR MECHANICAL, INCLUDING PHOTOCOPYING, RECORDING, OR BY ANY INFORMATION STORAGE AND RETRIEVAL SYSTEM, WITHOUT THE WRITTEN PERMISSION OF PHILIP J. DOUGHTY ASSOCIATES, INC. ARCHITECTS ON COMPLETION OF WORK IS REQUIRED.