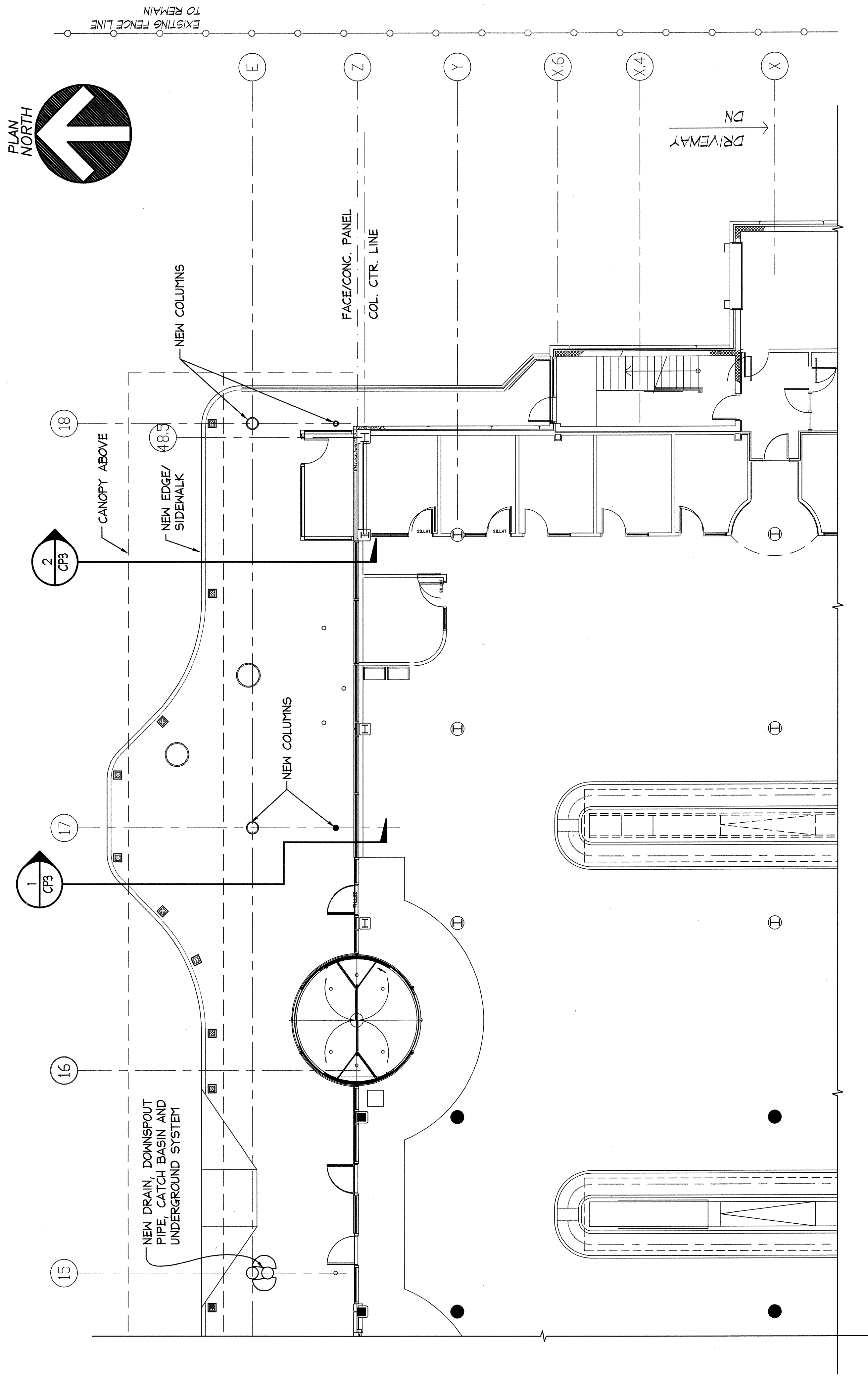


PHILIP J. DOUGHTY ASSOCIATES ARCHITECTS ON COMPLETION OF WORK, IF REQUESTED.
 PHILIP J. DOUGHTY ASSOCIATES ARCHITECTS, 207.781.5346
 362 U.S. ROUTE ONE, FALMOUTH, MAINE 04105
 PHILIP J. DOUGHTY ASSOCIATES ARCHITECTS

SCALE : 1/8" = 1'-0"

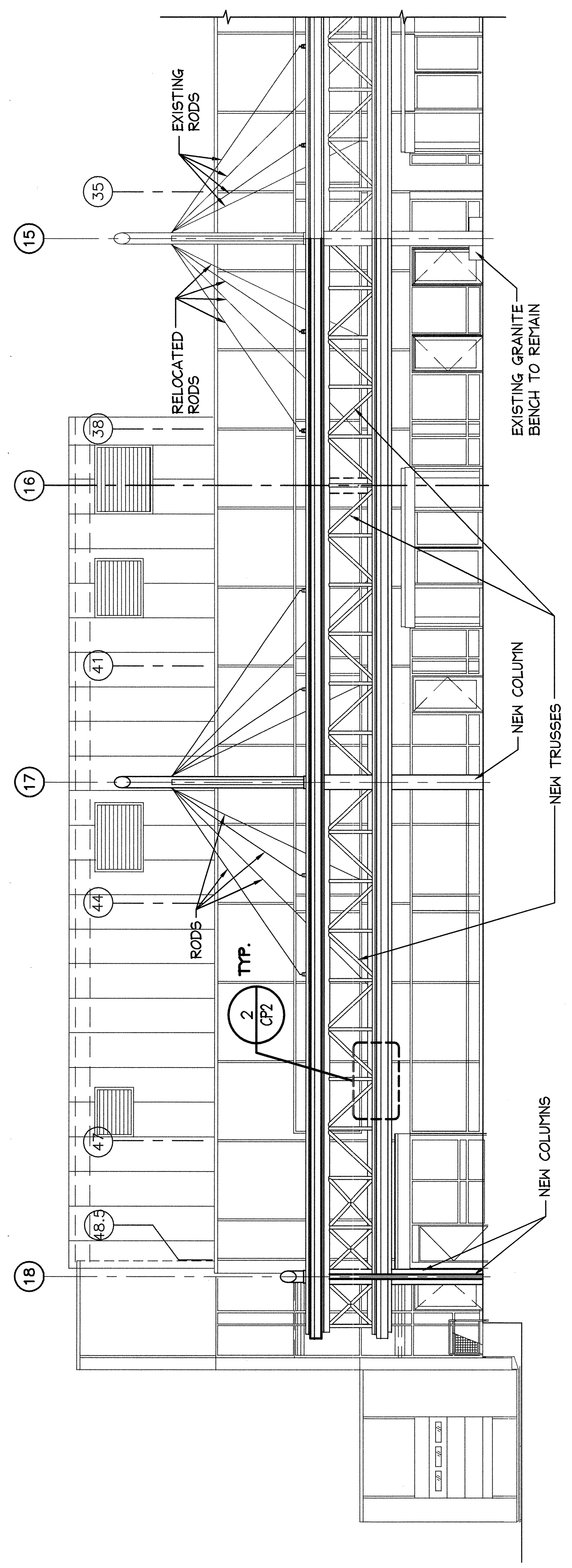
CANOPY EXTENSION PLAN



NOTE:
 ALL NEW EXPOSED
 STRUCTURAL STEEL WITH SPECIFIED
 HIGH PERFORMANCE COATING TO
 MATCH ADJACENT MATERIALS

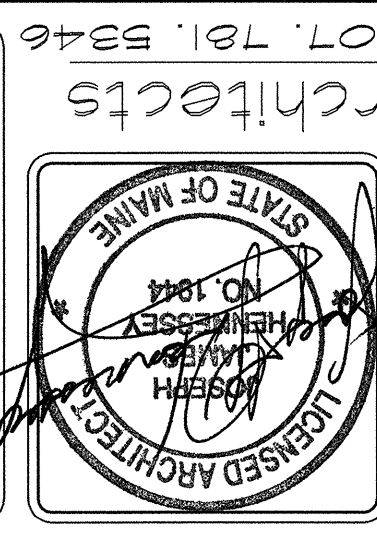
CANOPY EXTENSION NORTH ELEVATION @ EAST END

SCALE : 1/8" = 1'-0"



CP-1
 SHEET NO.
 949.02.01
 OF

ADDITIONS AND ALTERATIONS:
 EASTERLY EXPANSION OF BAGGAGE CLAIM FACILITY
 PORTLAND INTERNATIONAL JETPORT, PORTLAND, MAINE
 CANOPY EXTENSION PLAN AND NORTH ELEVATION
 Phillip J. Doughty Assoc. Architects
 362 U.S. Route One, Falmouth, Maine 04105
 PDA Architects



REV'S N	DATE	APPROV'D	DRAWN	CHECK'D	DESCRIPTION
1	4/22/04	JMF	JMF	JMF	CONFORMED DRAWINGS ISSUED FOR CONSTRUCTION
0	FEB. 28, 2004	JMF	JMF	JMF	BB SUBMITTAL

OEST Associates, Inc.
 engineers
 architects
 surveyors
 construction
 managers
 343 Gorham Road, South Portland, ME 04106-2317
 Tel: (207)774-1246 Fax: (207)774-1246
 Email: mjd@oest.com
 Web: www.oest.com