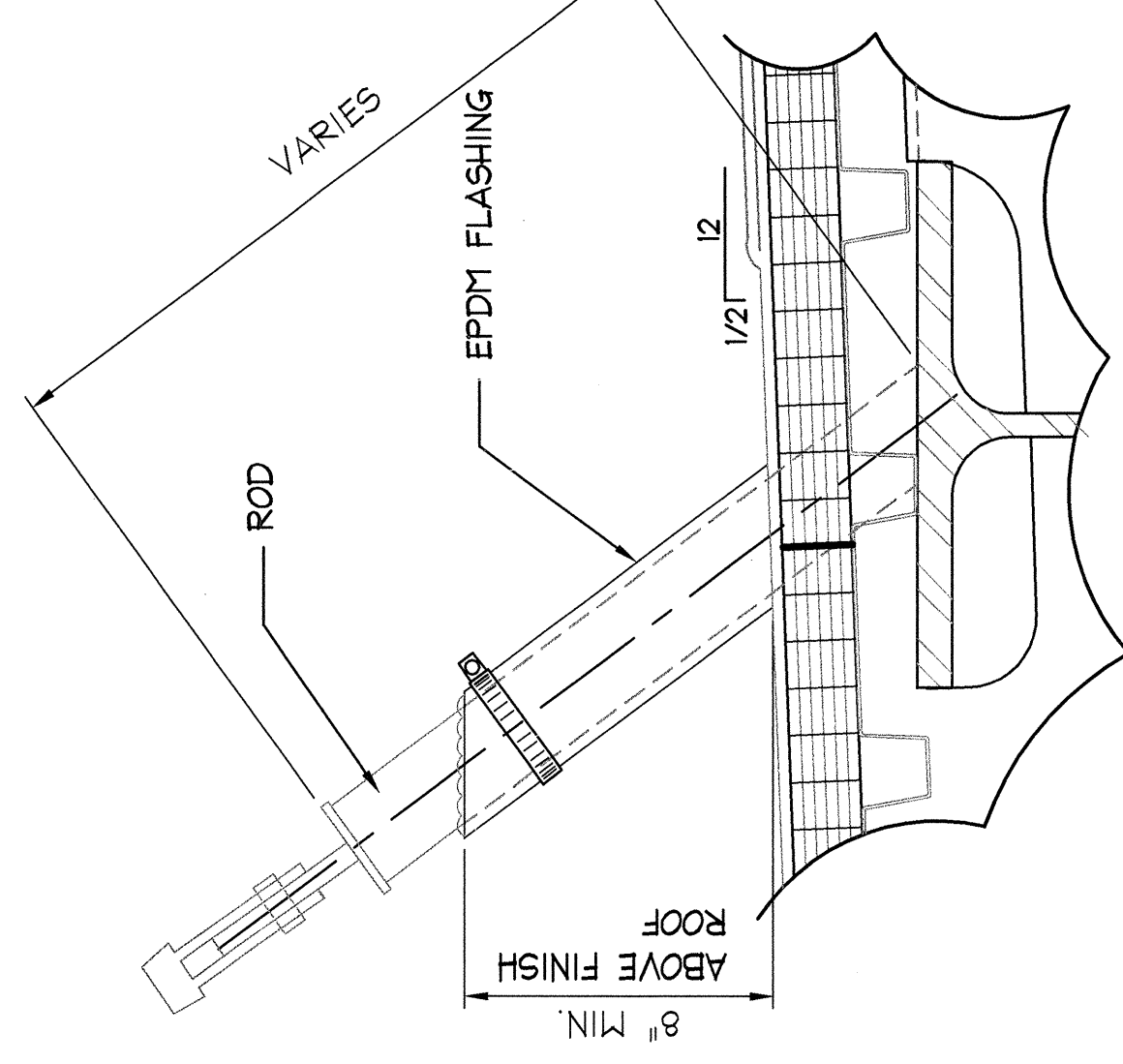
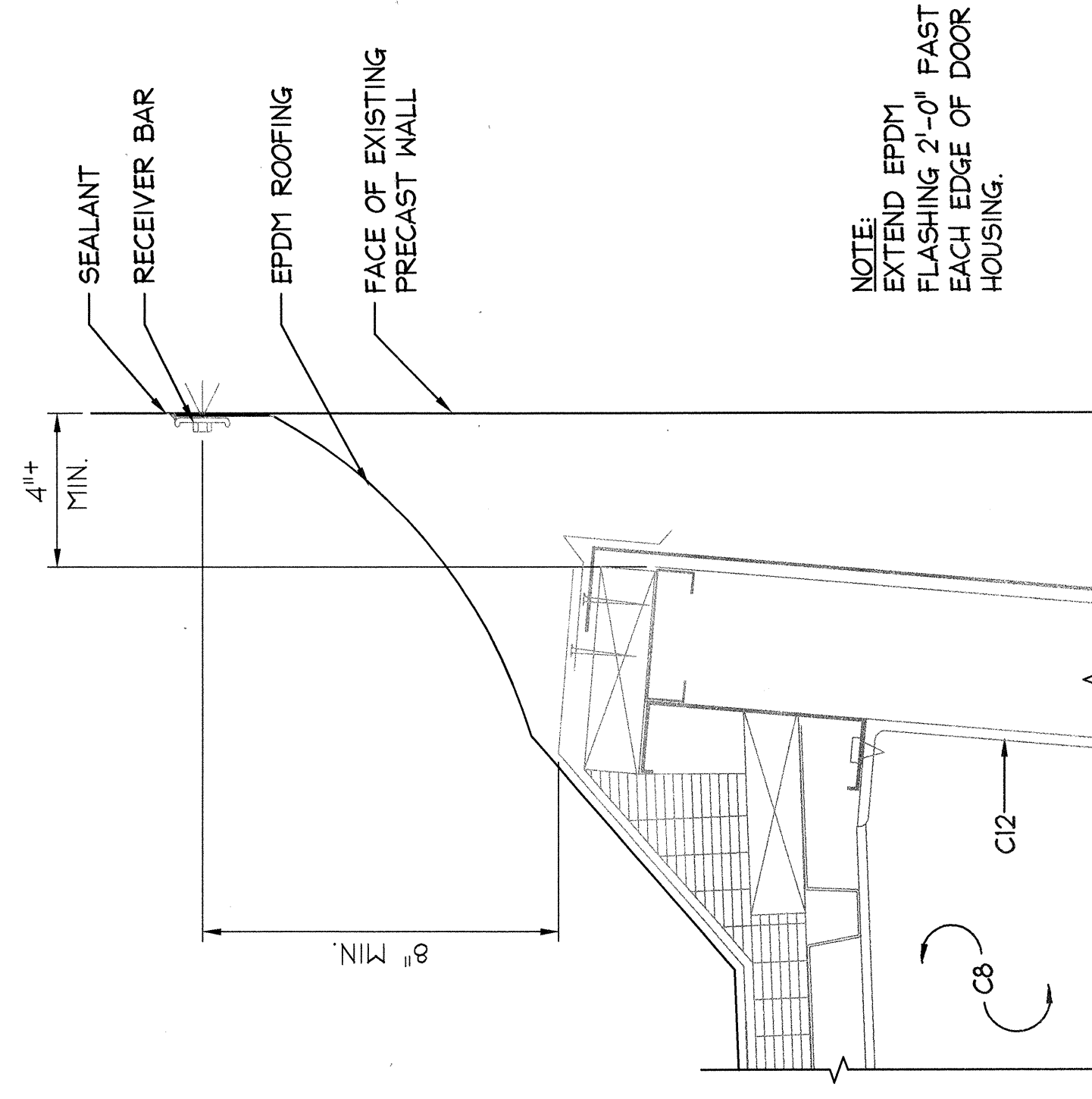


1 ROOF DRAIN
SCALE: 3" = 1'-0"

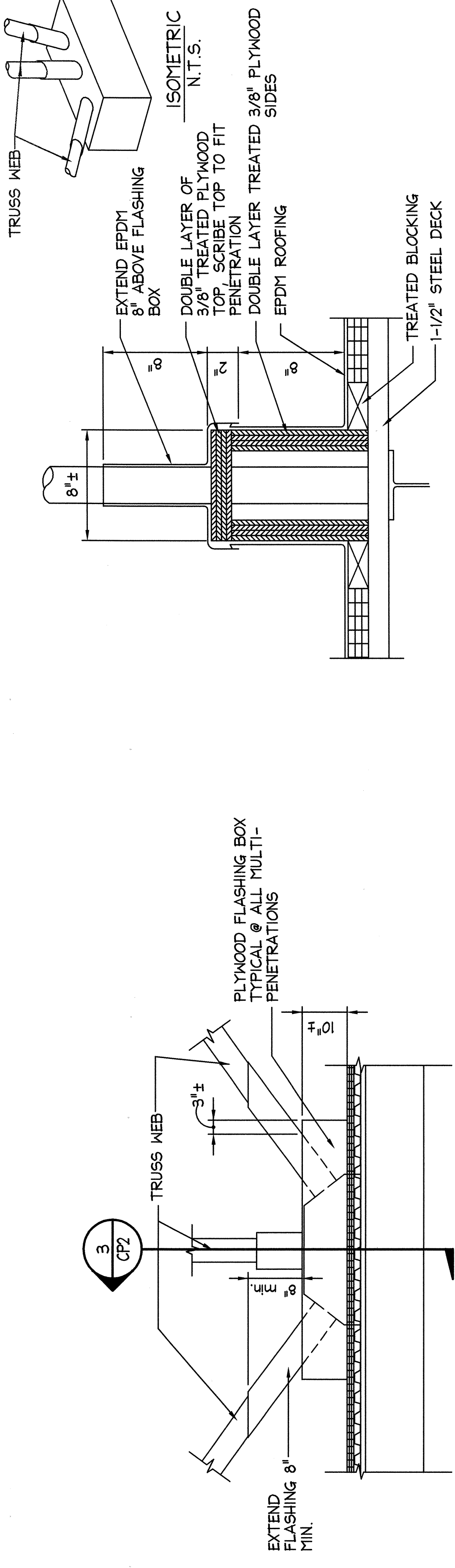


4 CABLE/ROD
SCALE: 3" = 1'-0"

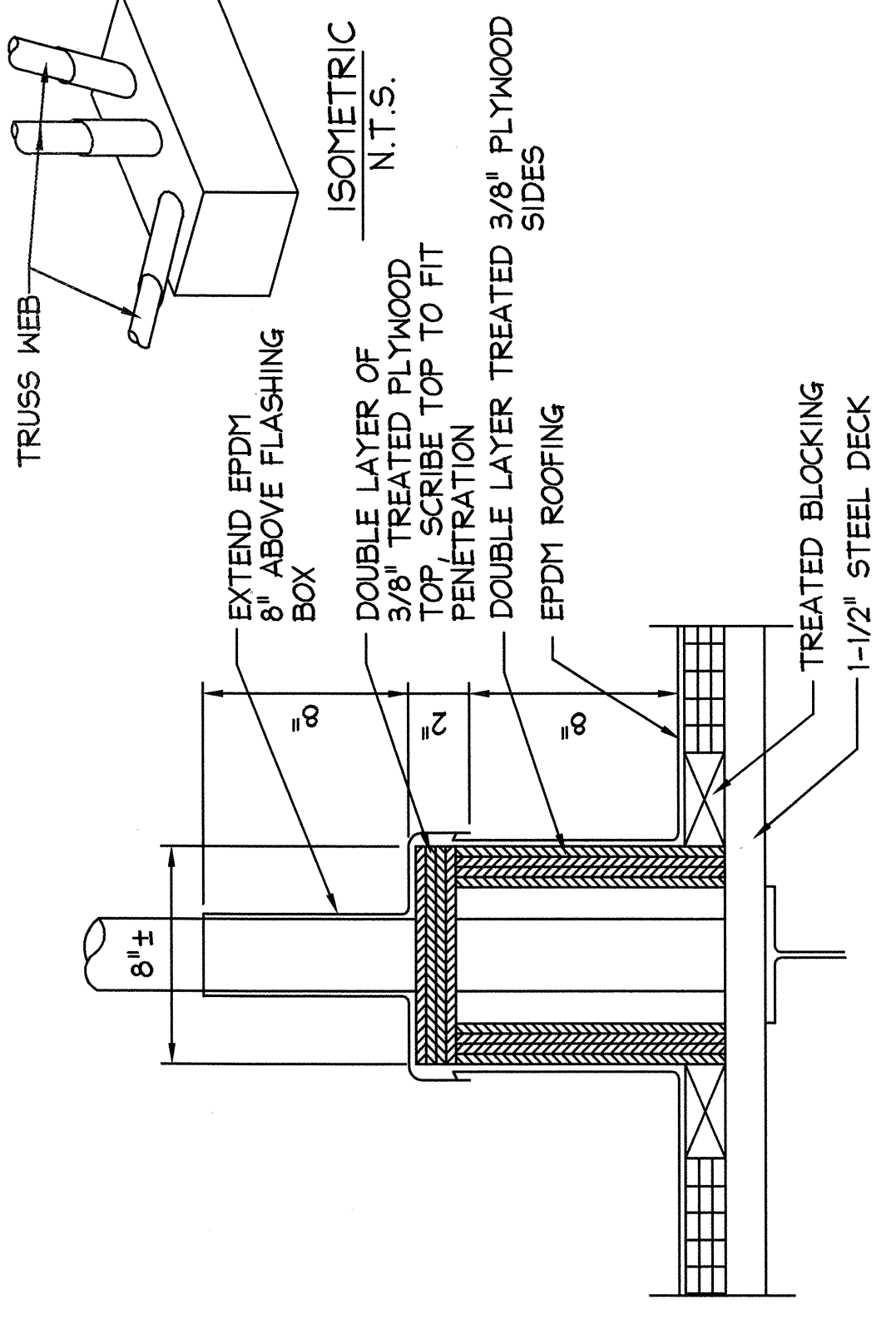


5 EDGE DETAIL @ LOWER CANOPY
SCALE: 3" = 1'-0"

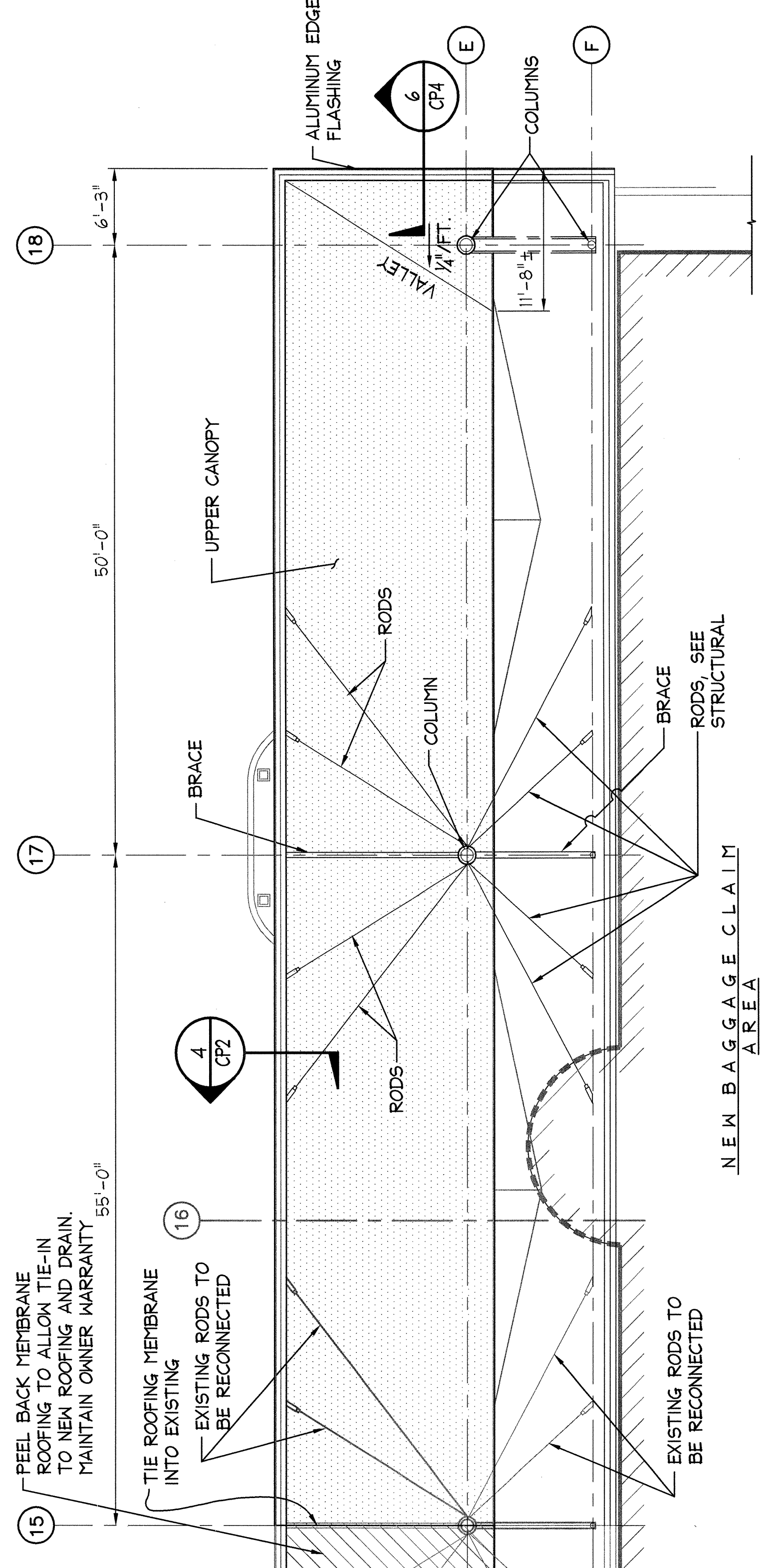
NOTE:
EXTEND EPDM FLASHING 2'-0" FAST EACH EDGE OF DOOR HOUSING.



2 SECTION @ FLASHING BOX
SCALE: 1" = 1'-0"

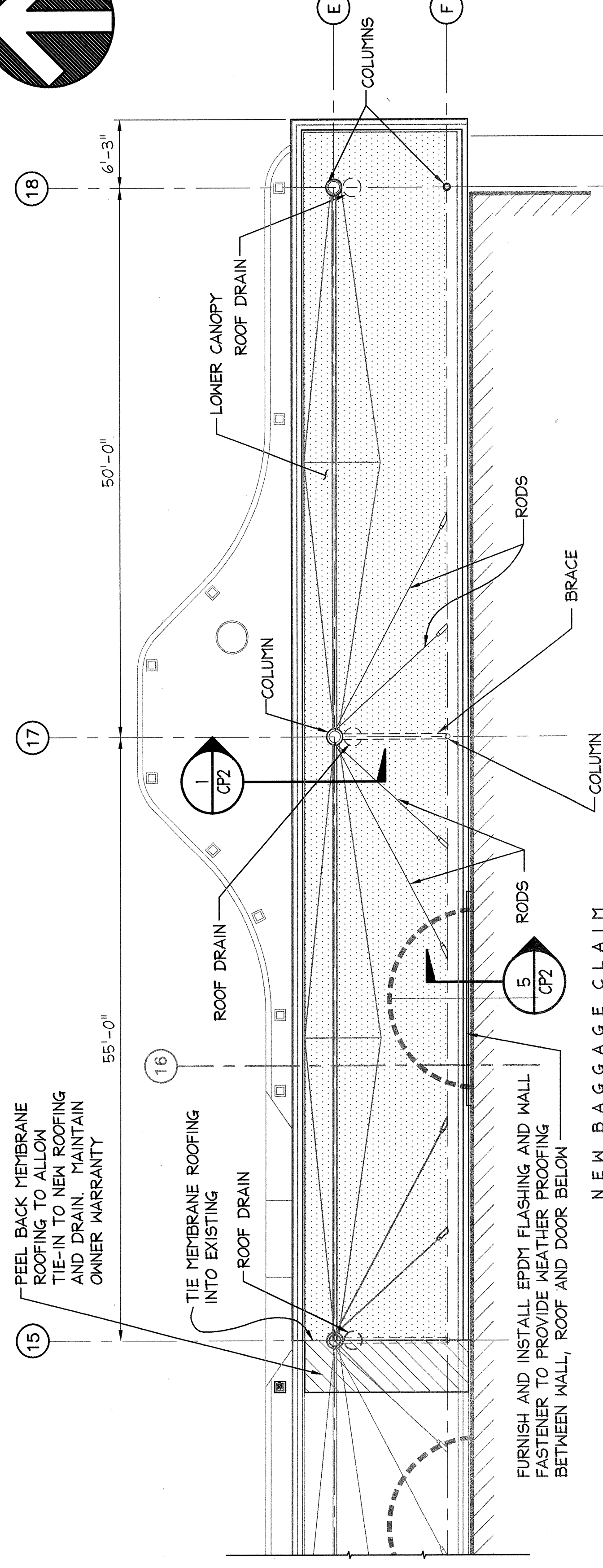
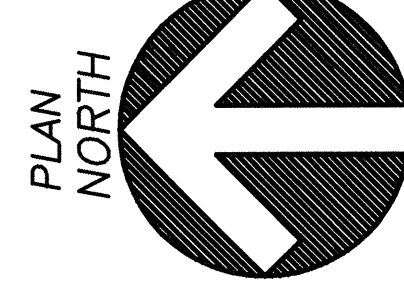
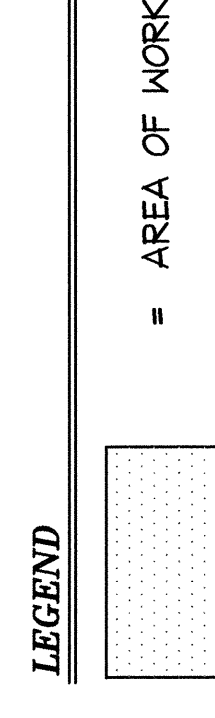


3 FLASHING BOX AT TRUSS PENETRATION
SCALE: 1" = 1'-0"



ROOF PLAN AT UPPER CANOPY

SCALE: 1/8" = 1'-0"



ROOF PLAN AT LOWER CANOPY

SCALE: 1/8" = 1'-0"

OEST Associates, Inc.
engineers
architects
surveyors
constructors
managers

343 Goshorn Road - South Portland, ME 04106-2317
Tel: (207)774-1246 Fax: (207)774-1246
E-mail: mtd@oest.com Web: www.oest.com

REVIS N	DATE	DESCRIPTION	BY	CHKD	APPVD
1	4/22/04	CONFORMED DRAWING ISSUED FOR CONSTRUCTION	JLR	LH	JMF
2	FEB. 29, 2004	BID SUBMITTAL	JLR	LH	JMF

PHILIP J. DOUGHTY ASSOCIATES, ARCHITECTS
362 U.S. Route One, Falmouth, Maine 04105 • 207.781.5346

APPROVED: _____
CHECKED: JLR
DRAWN: JLR
DESIGNED: JLR
DATE: OCT. 2002
SCALE: WARS

ADDITONS AND ALTERATIONS:
EASTERLY EXPANSION OF BAGGAGE CLAIM FACILITY
PORTLAND INTERNATIONAL AIRPORT, PORTLAND, MAINE
CANOPY LOWER AND UPPER ROOF PLANS

STATE OF MAINE
LICENSED ARCHITECT
No. 1944
Philip J. Doughty

CP-2
949.02.01
SHEET NO.
OF

THIS DRAWING IS AN INSTRUMENT OF SERVICE AND SHALL REMAIN THE PROPERTY OF PHILIP J. DOUGHTY ASSOCIATES, ARCHITECTS. IT IS TO BE USED ONLY FOR THE PROJECT AND SITE SPECIFICALLY IDENTIFIED HEREON. IT IS TO BE RETURNED TO PHILIP J. DOUGHTY ASSOCIATES, ARCHITECTS UPON COMPLETION OF WORK, IF REQUESTED.