

**OEST Associates, Inc.**  
 architects  
 engineers  
 surveyors  
 construction  
 managers

243 Goshorn Road, South Portland, ME 04106-2317  
 Tel: (207)761-1770 Fax: (207)774-1246  
 Web: www.oest.com EMail: mjo@oest.com

REVIS N.	DATE	DESCRIPTION	BY	CHKD	APPVD
1	4/22/04	CONFORMED DRAWINGS ISSUED FOR CONSTRUCTION	JLR	JLR	JLR
0		BID SUBMITTAL	JLR	JLR	JLR

PHILLIP J. DOUGHTY ASSOC. ARCHITECTS  
 362 U.S. Route One, Falmouth, Maine 04105 • 207.781.5546

**PDA** Architects

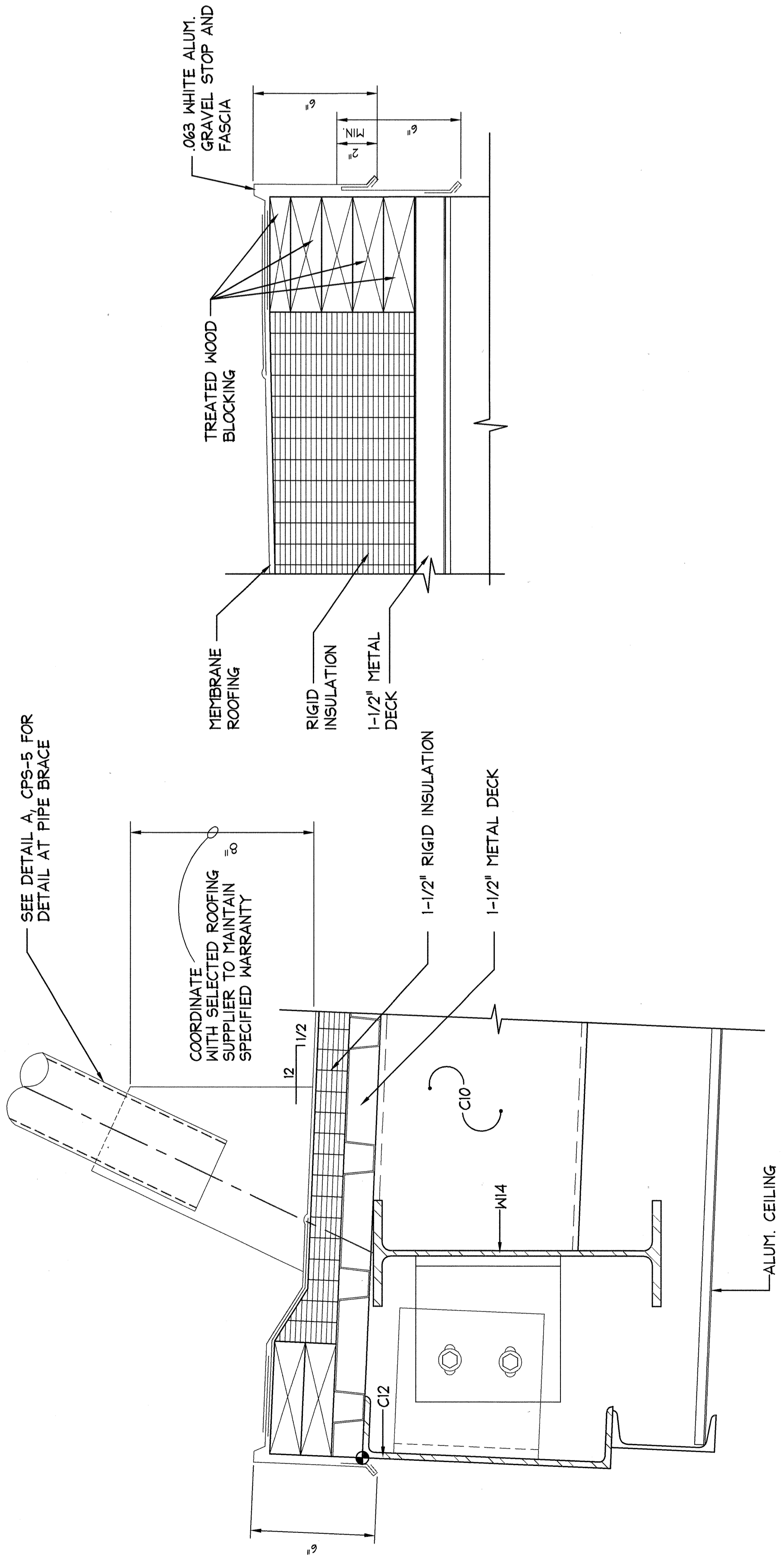
APPROVED: \_\_\_\_\_  
 CHECKED: JLR  
 DRAWN: JLR  
 DESIGNED: JLR  
 DATE: OCT 2002

SCALE: 1/8" = 1'-0"  
 1/4" = 1'-0"

ADDITONS AND ALTERATIONS:  
 EASTERY EXPANSION OF BAGGAGE CLAIM FACILITY  
 PORTLAND INTERNATIONAL JETPORT, PORTLAND, MAINE

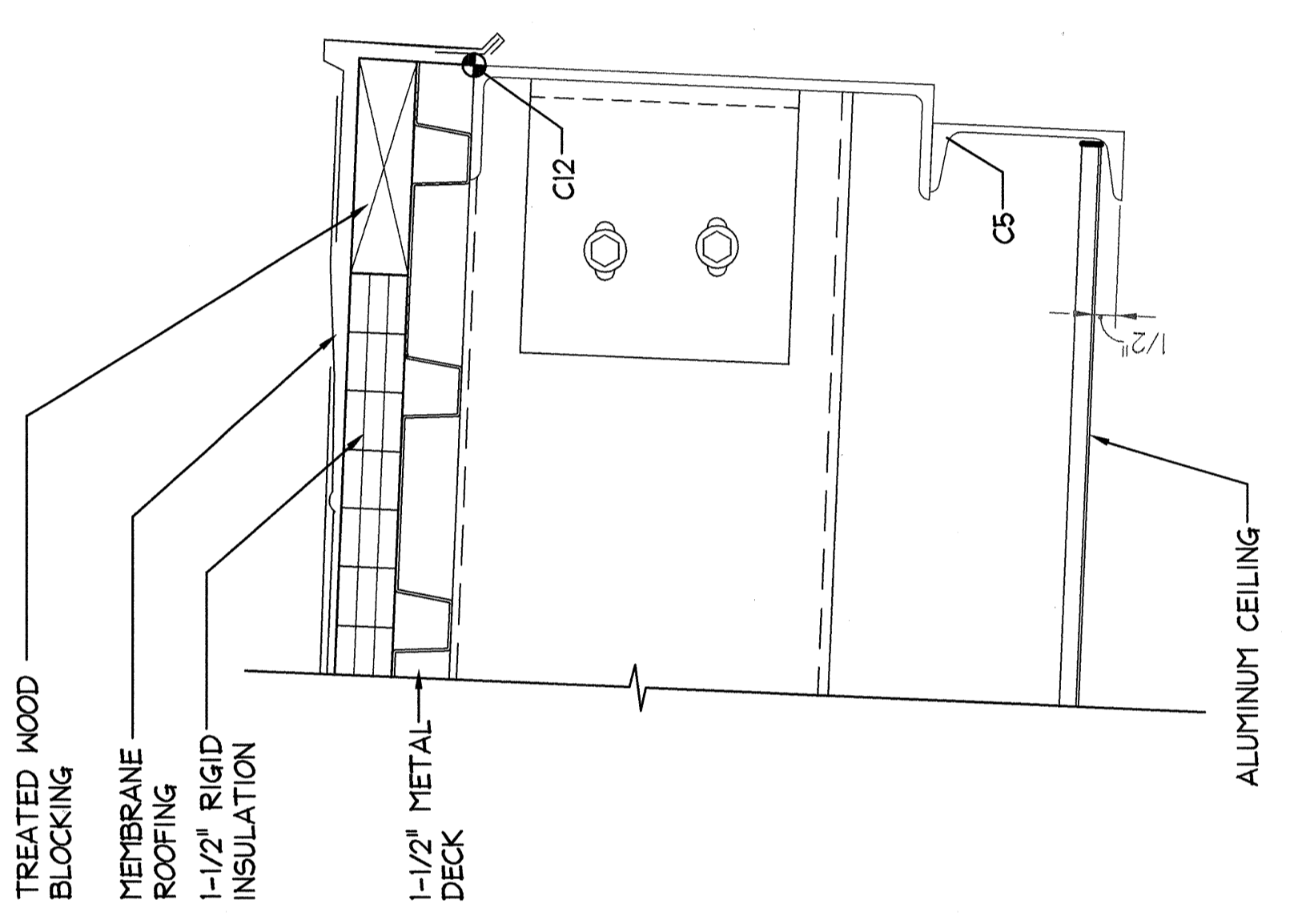
CANOPY DETAILS

PROJ: 949.02.01  
 SHT: CP4  
 SHEET NO. CP-4

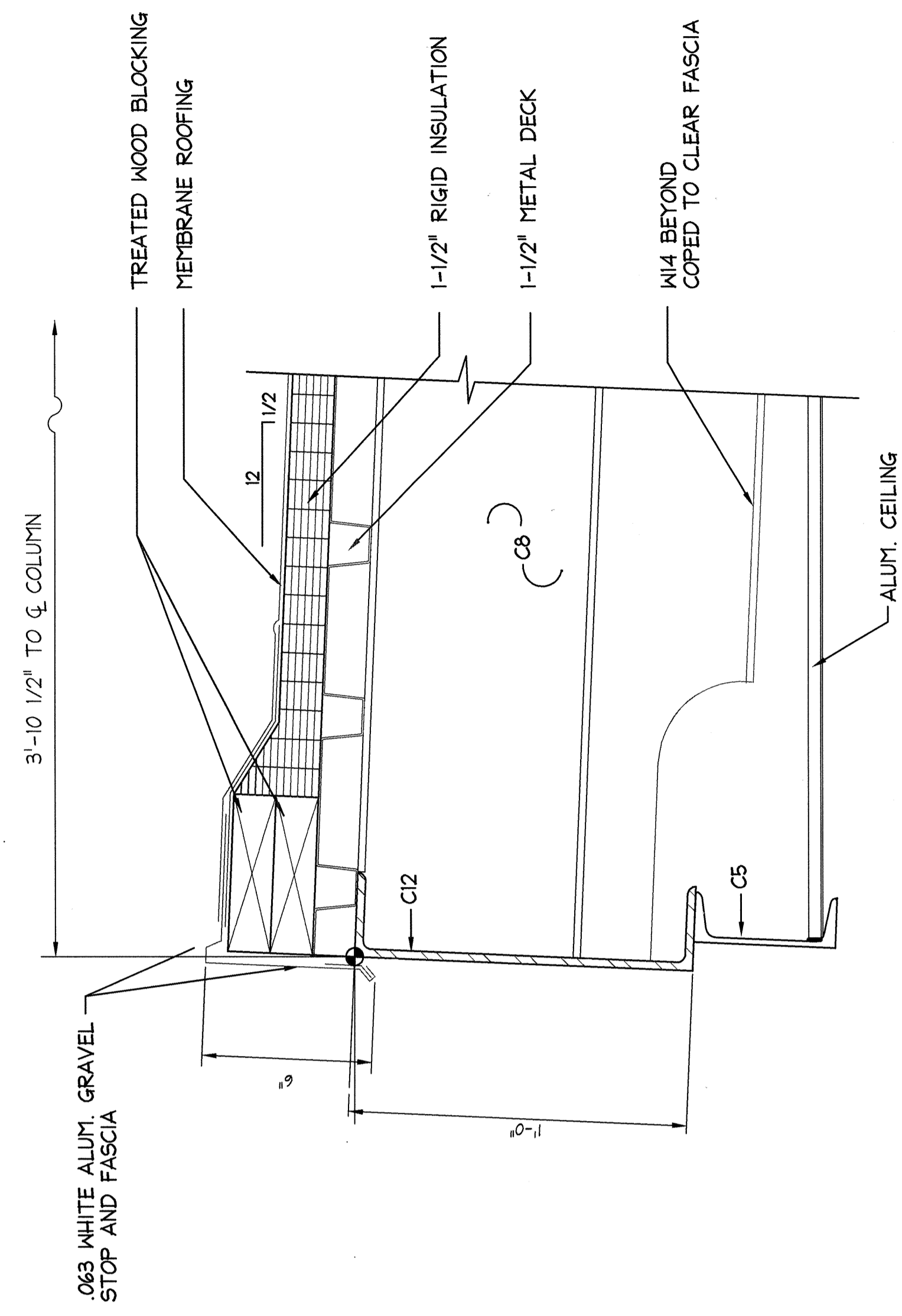


2 EDGE DETAIL @ UPPER CANOPY  
 SCALE: 3" = 1'-0"

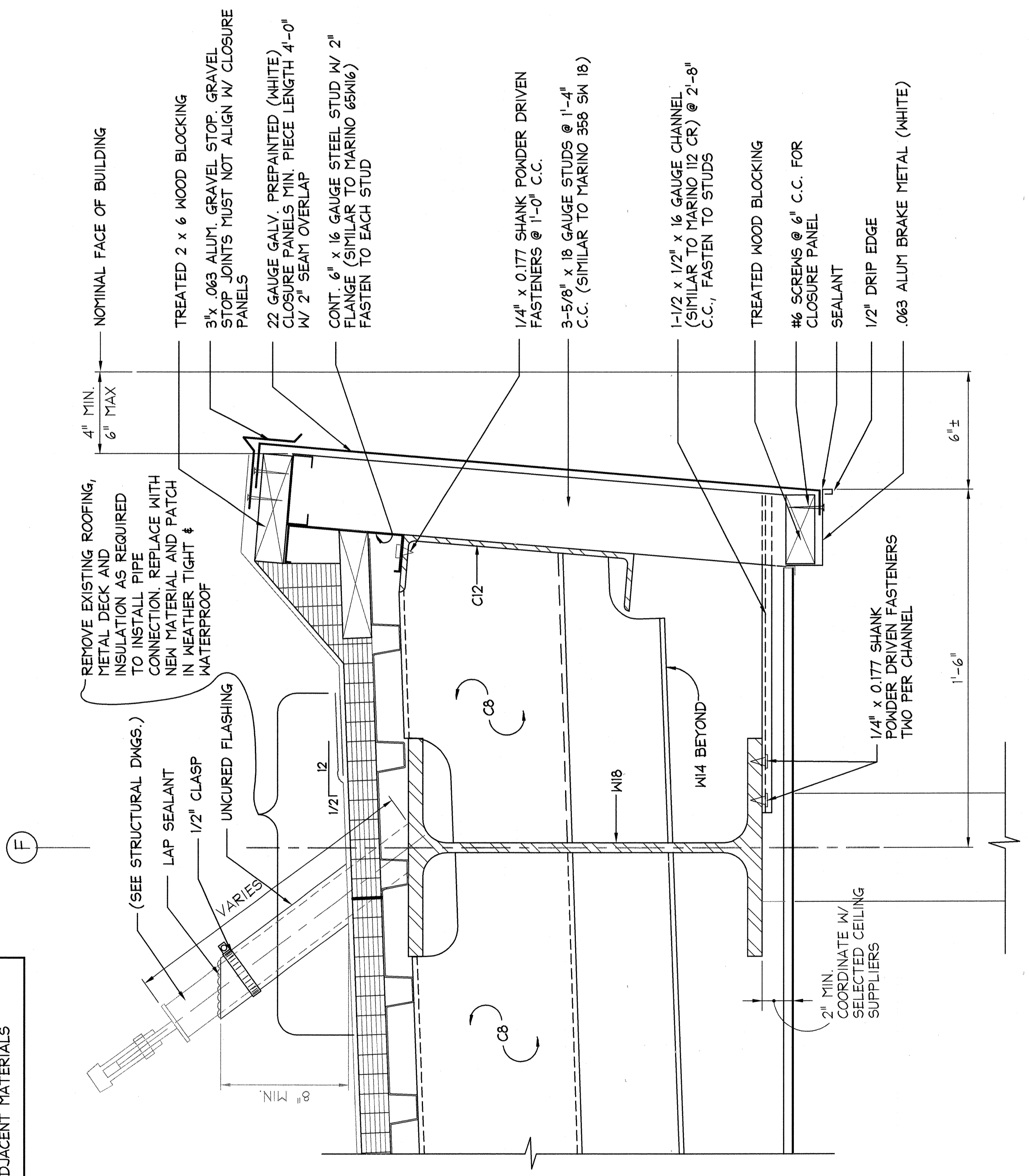
NOTE:  
 PAINT ALL NEW EXPOSED  
 STRUCTURAL STEEL WITH SPECIFIED  
 HIGH PERFORMANCE COATING TO  
 MATCH ADJACENT MATERIALS



3 EDGE DETAIL @ UPPER CANOPY  
 SCALE: 3" = 1'-0"



4 EDGE DETAIL @ LOWER CANOPY  
 SCALE: 3" = 1'-0"



5 EDGE DETAIL @ LOWER CANOPY  
 SCALE: 3" = 1'-0"

THESE DRAWINGS ARE AN INSTRUMENT OF SERVICE AND SHALL BE REMAINDER PROPERTY OF PHILLIP J. DOUGHTY ASSOCIATES, ARCHITECTS. ANY REPRODUCTION OR TRANSMISSION OF THESE DRAWINGS WITHOUT THE WRITTEN PERMISSION OF PHILLIP J. DOUGHTY ASSOCIATES, ARCHITECTS IS PROHIBITED AND WILL BE RETAINED TO PHILLIP J. DOUGHTY ASSOCIATES, ARCHITECTS UPON COMPLETION OF WORK. IF REQUESTED.