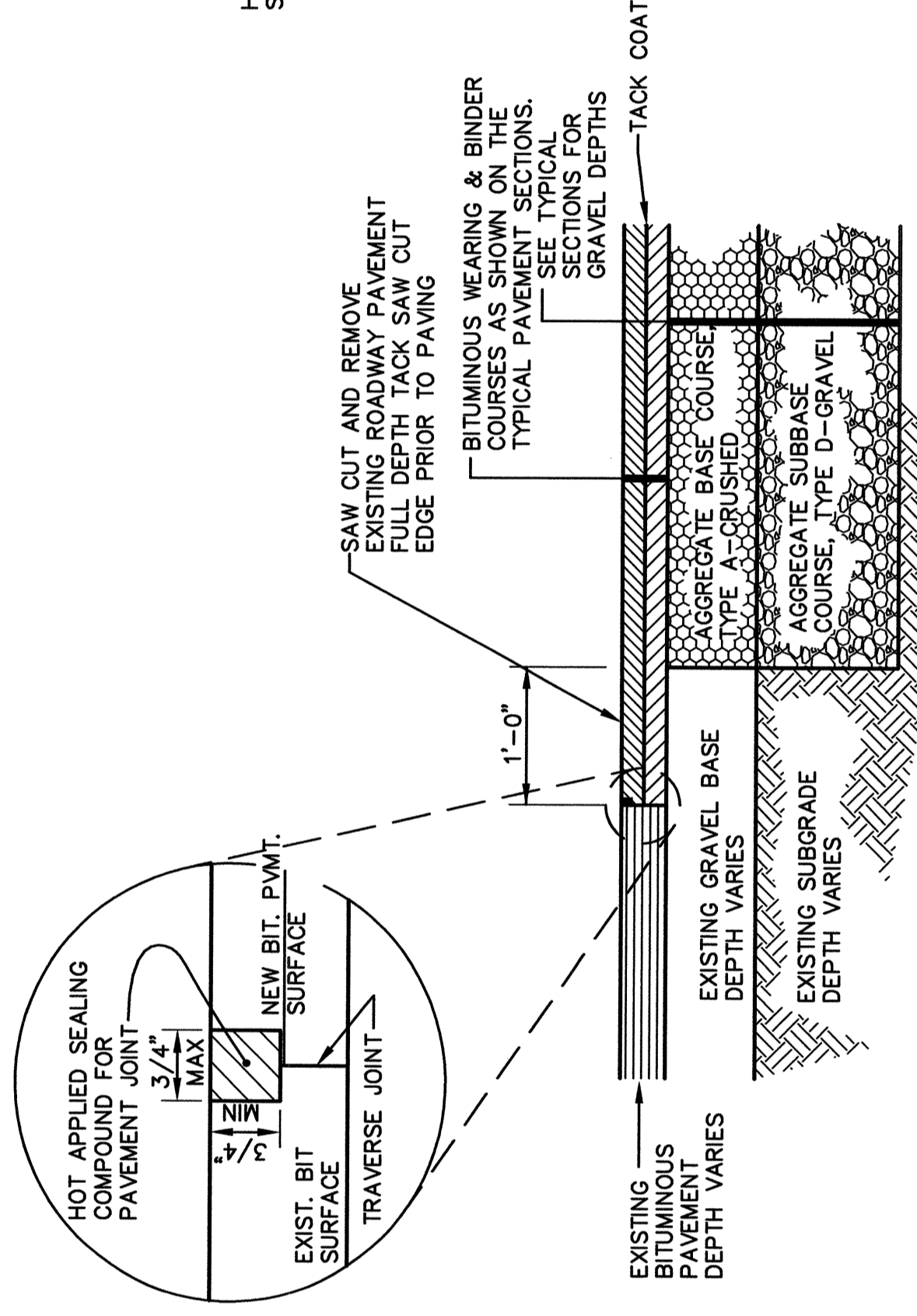
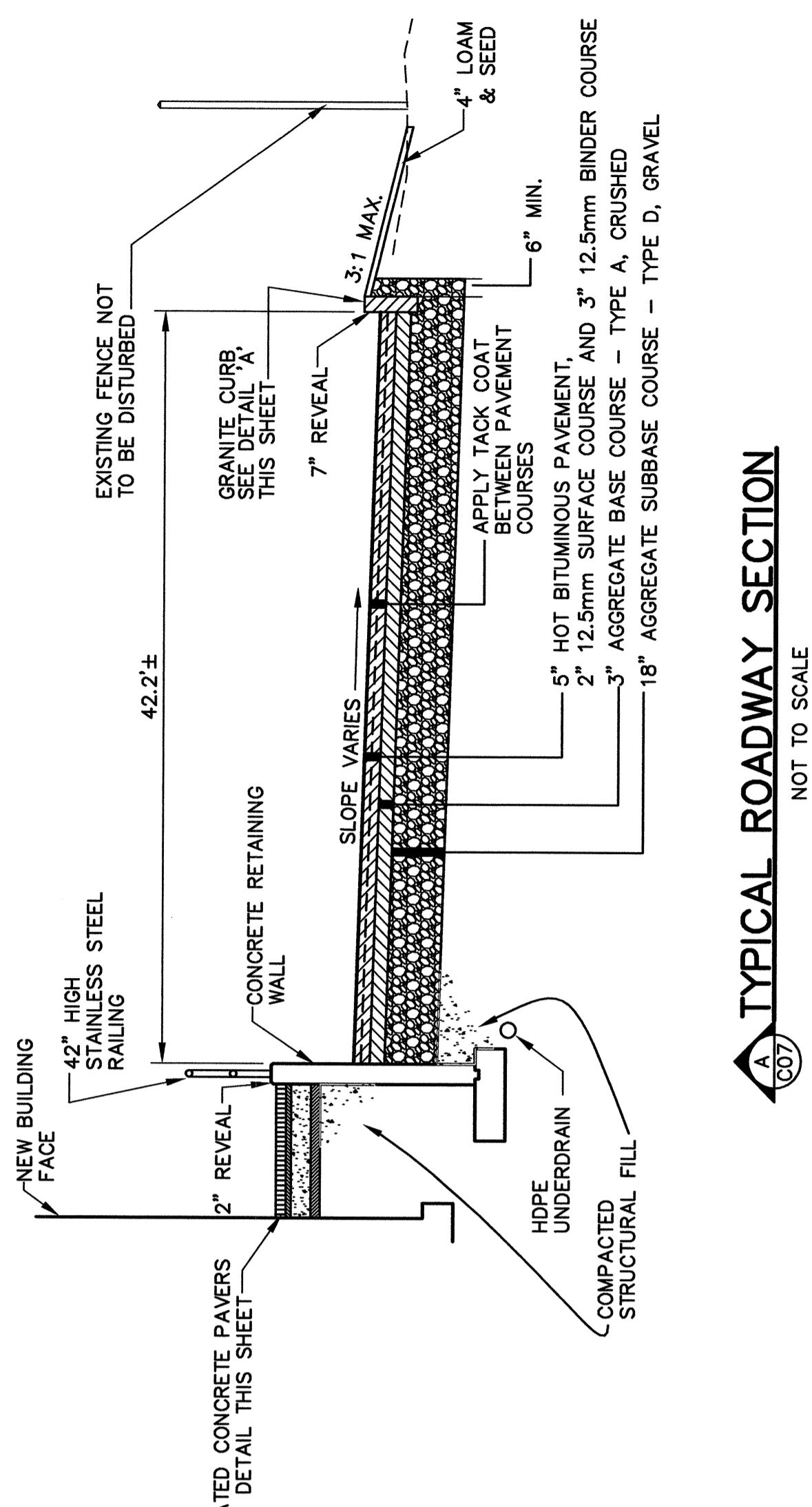


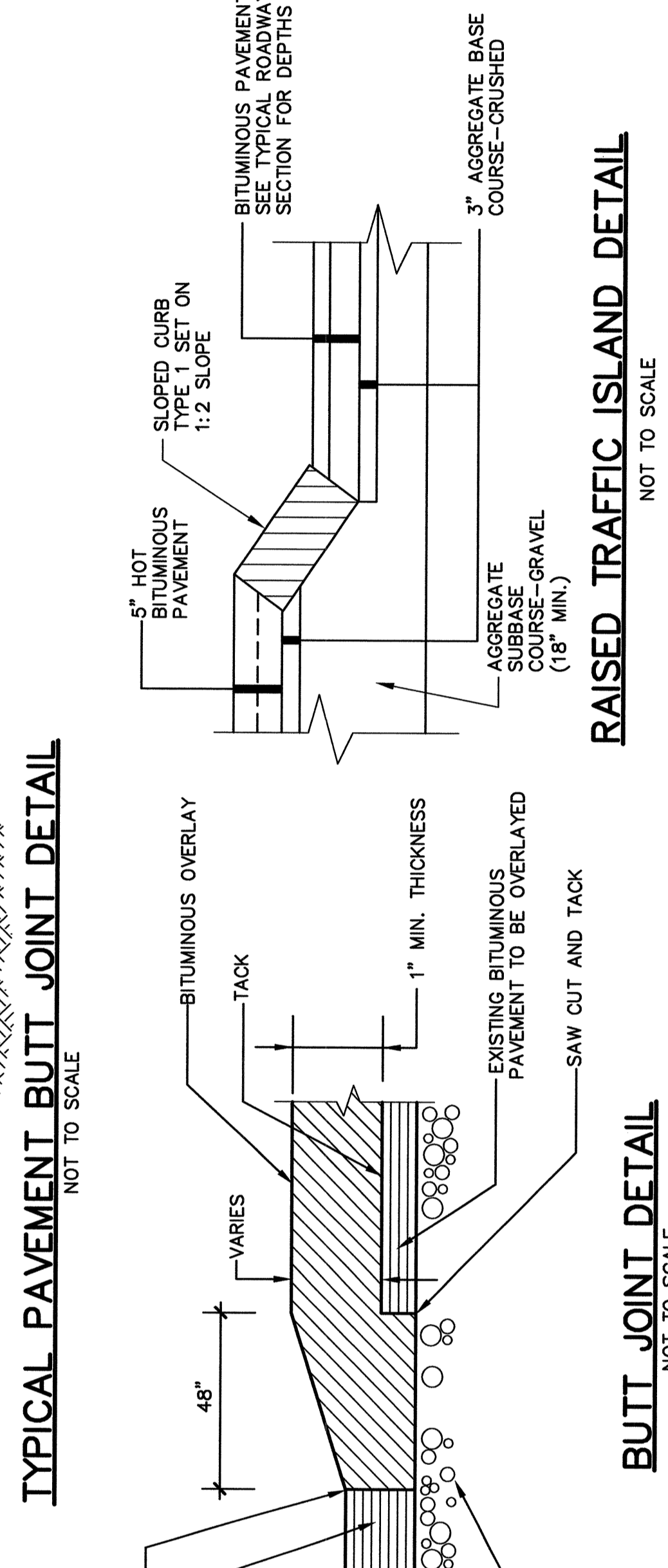
- GENERAL NOTES:**
- PAVED ENTRANCES AND EXITS SHALL BE CONSTRUCTED WITH THE SAME COMPONENTS AND THE SAME THICKNESS AS THE TYPICAL ROADWAY.
 - THE LOCATION OF THE EXISTING UNDERGROUND UTILITIES AND DRAINAGE SHOWN ON THE PLANS IS APPROXIMATE AND SHALL BE CONFIRMED BY THE CONTRACTOR.
 - NO EXISTING DRAINAGE SHALL BE ABANDONED, REMOVED OR PLUGGED WITHOUT PRIOR APPROVAL OF JEI-PORT PERSONNEL.
 - ANY NECESSARY CUTTING OF EXISTING PIPES TO FIT IN AREAS OF PROPOSED CATCH BASINS AND MODIFYING EXISTING CATCH BASINS TO FIT NEW PIPES, WILL NOT BE PAID FOR SEPARATELY AND WILL BE CONSIDERED INCIDENTAL TO CATCH BASIN INSTALLATION.
 - MULCH SHALL BE APPLIED IN ALL SEEDED AREAS.
 - LOAM SHALL BE PLACED TO A NOMINAL DEPTH OF 4" UNLESS OTHERWISE NOTED, OR DIRECTED BY JEI-PORT PERSONNEL.
 - SEE SITE GRADING AND UTILITY SHEETS FOR ROADWAY STORM DRAIN AND UNDERDRAIN LOCATIONS.



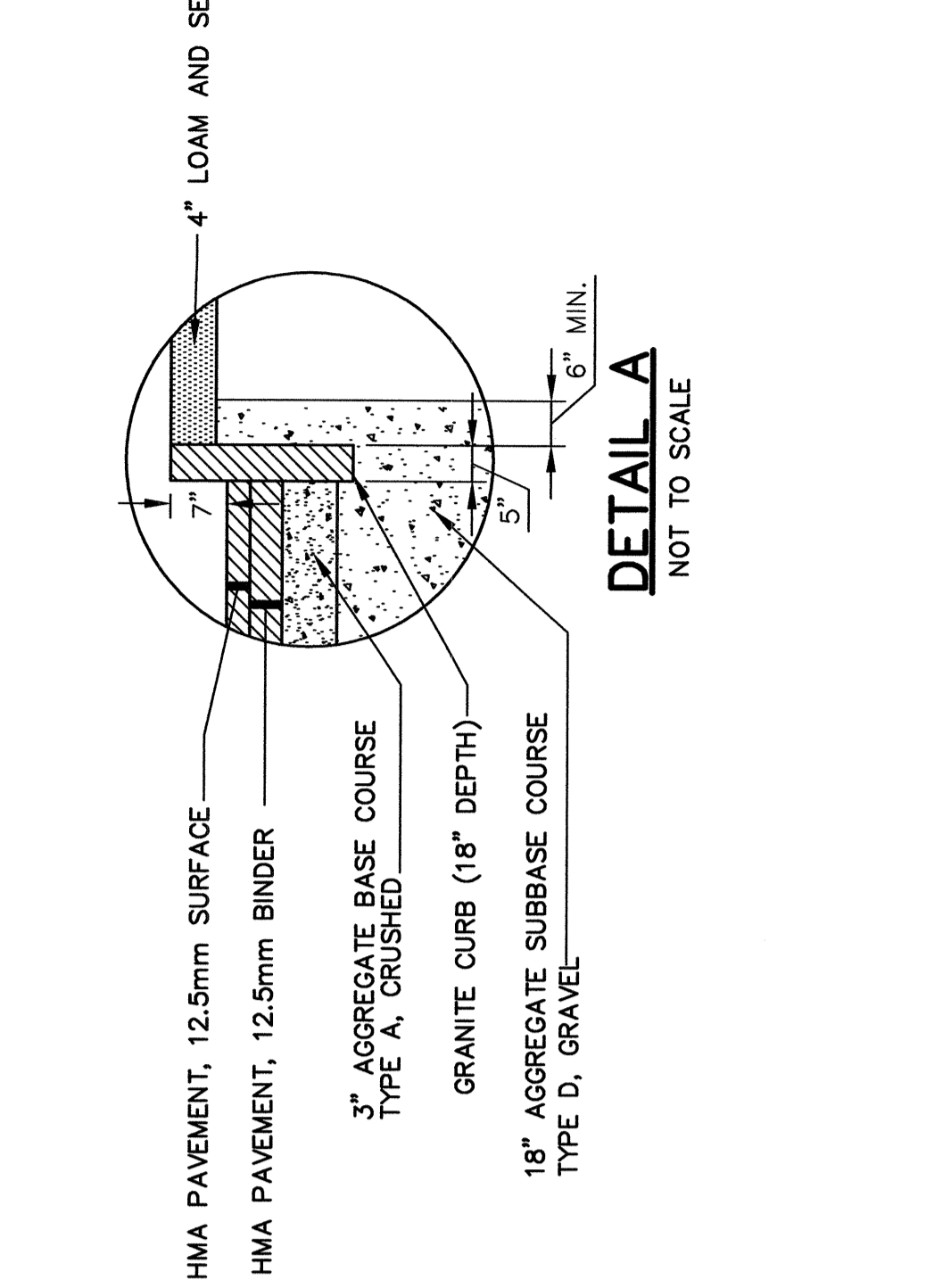
TYPICAL PAVEMENT BUTT JOINT DETAIL
NOT TO SCALE



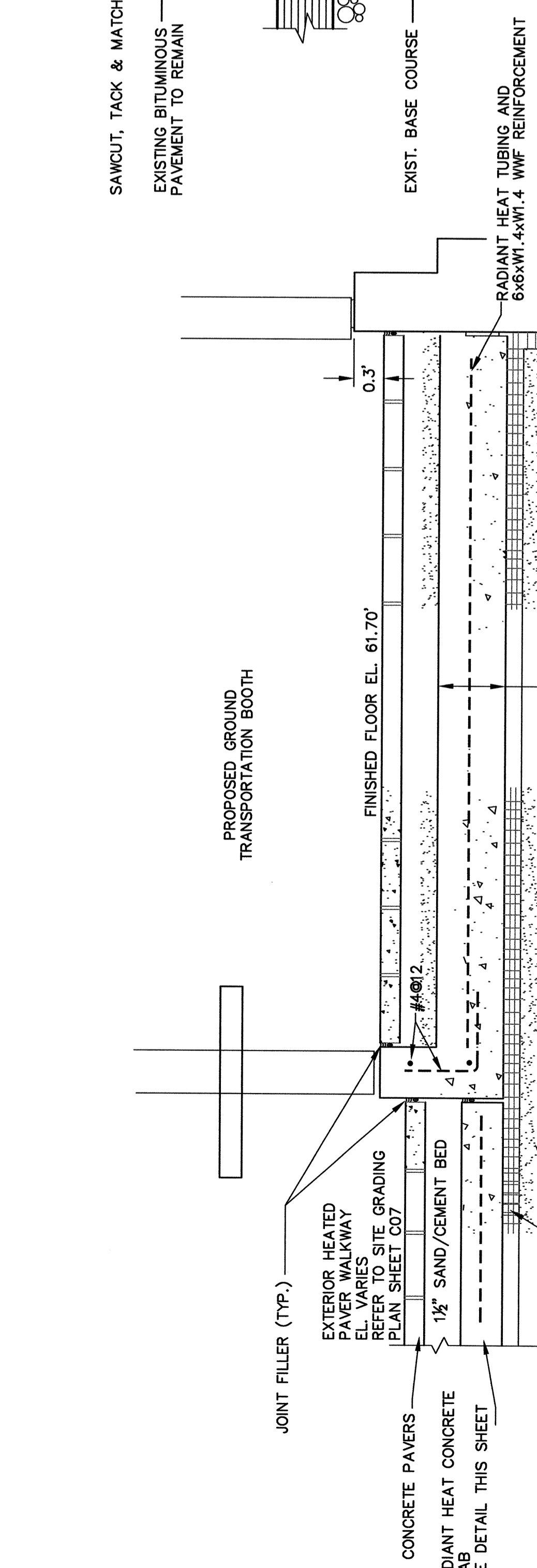
TYPICAL ROADWAY SECTION
NOT TO SCALE



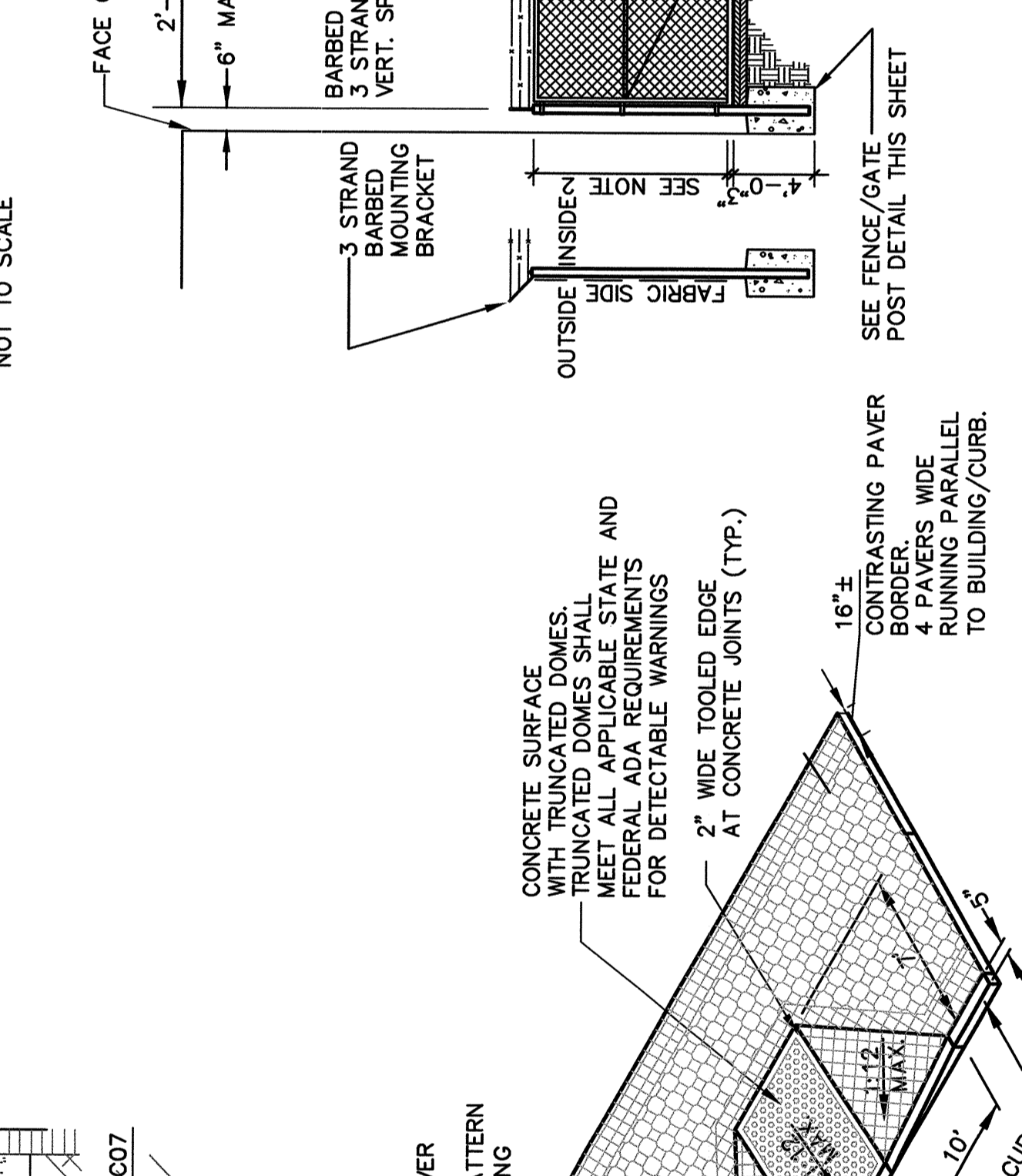
RAISED TRAFFIC ISLAND DETAIL
NOT TO SCALE



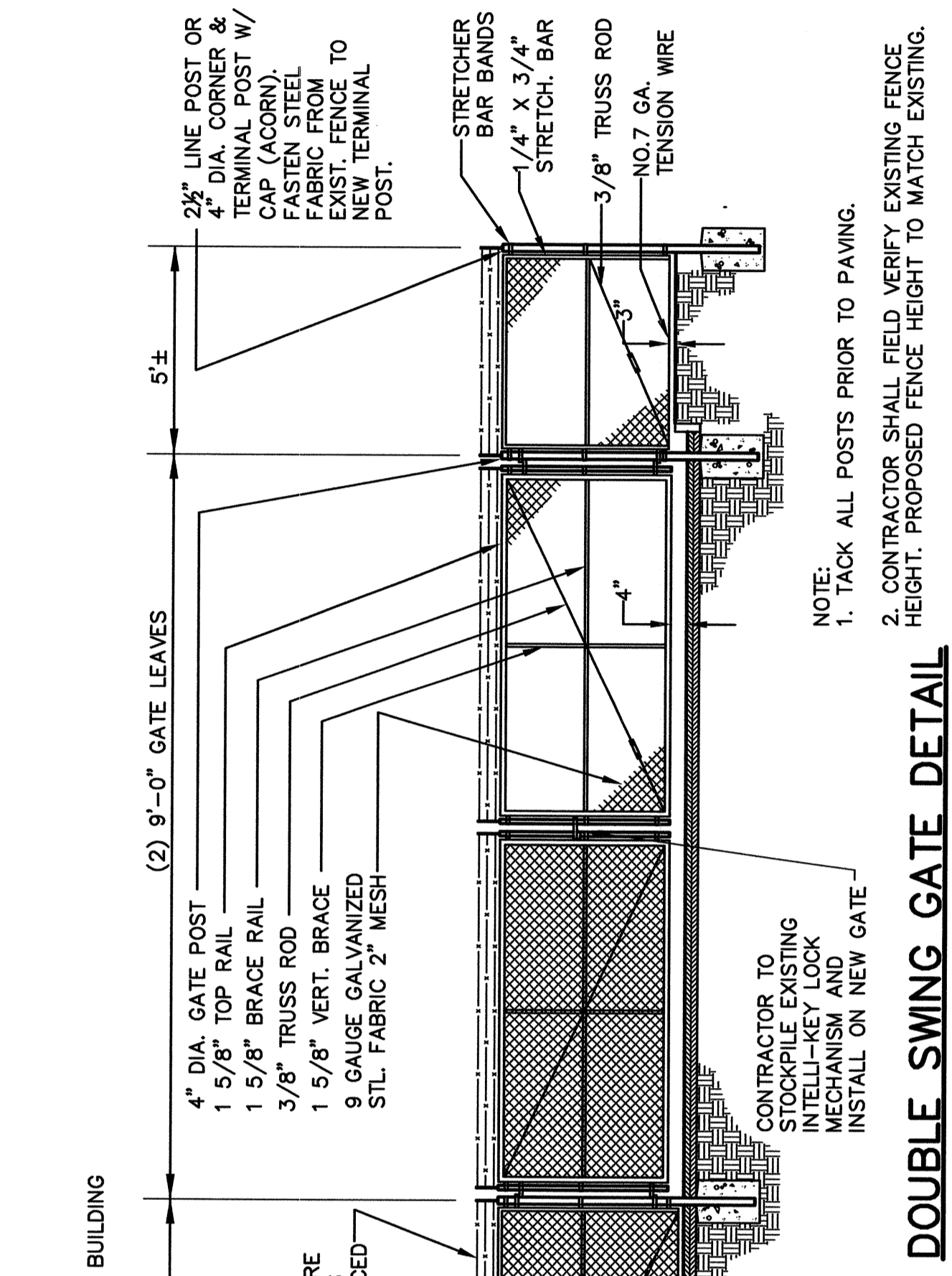
DETAIL A
NOT TO SCALE



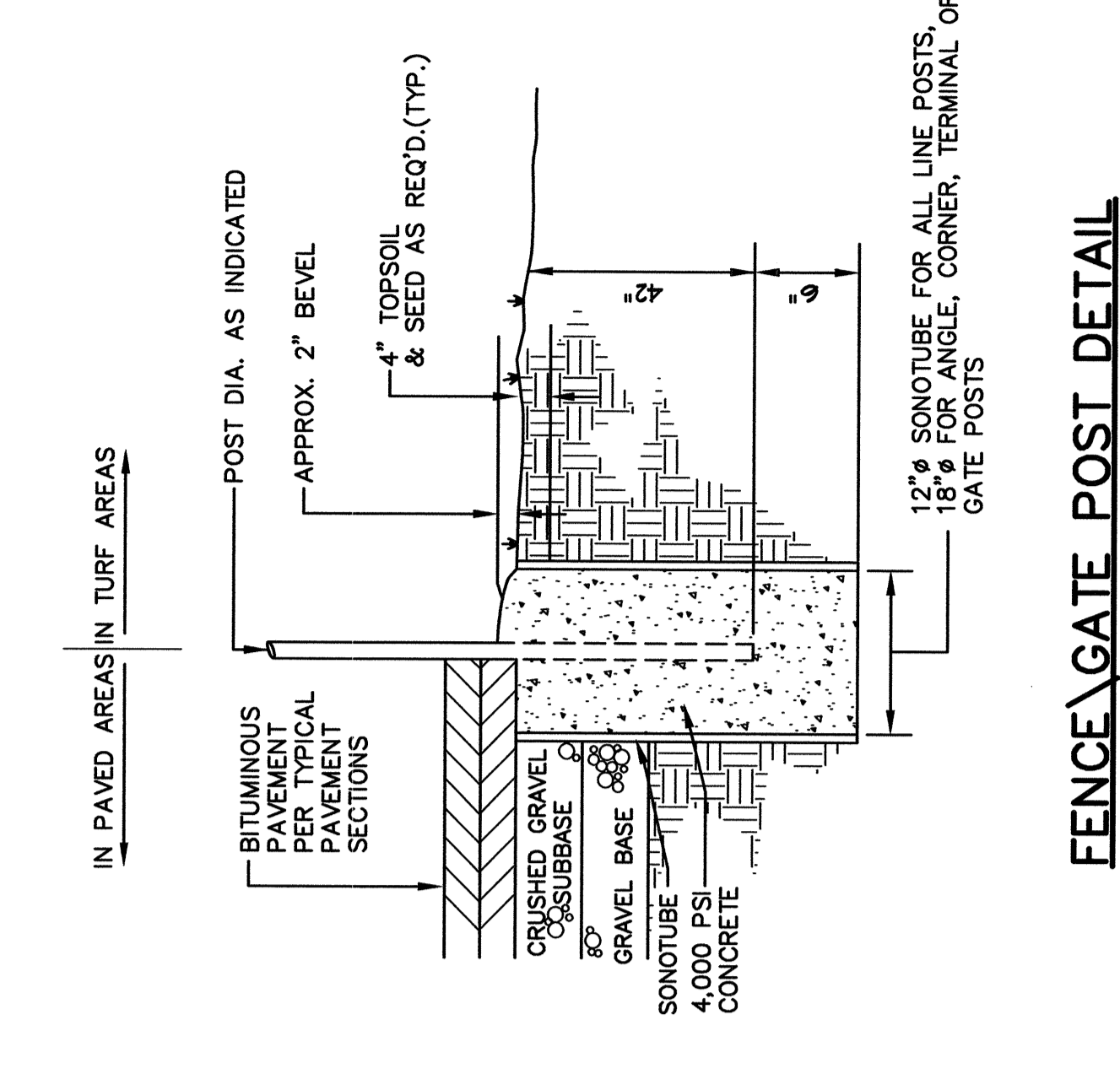
TYPICAL TRANSPORTATION BOOTH SLAB SECTION
NOT TO SCALE



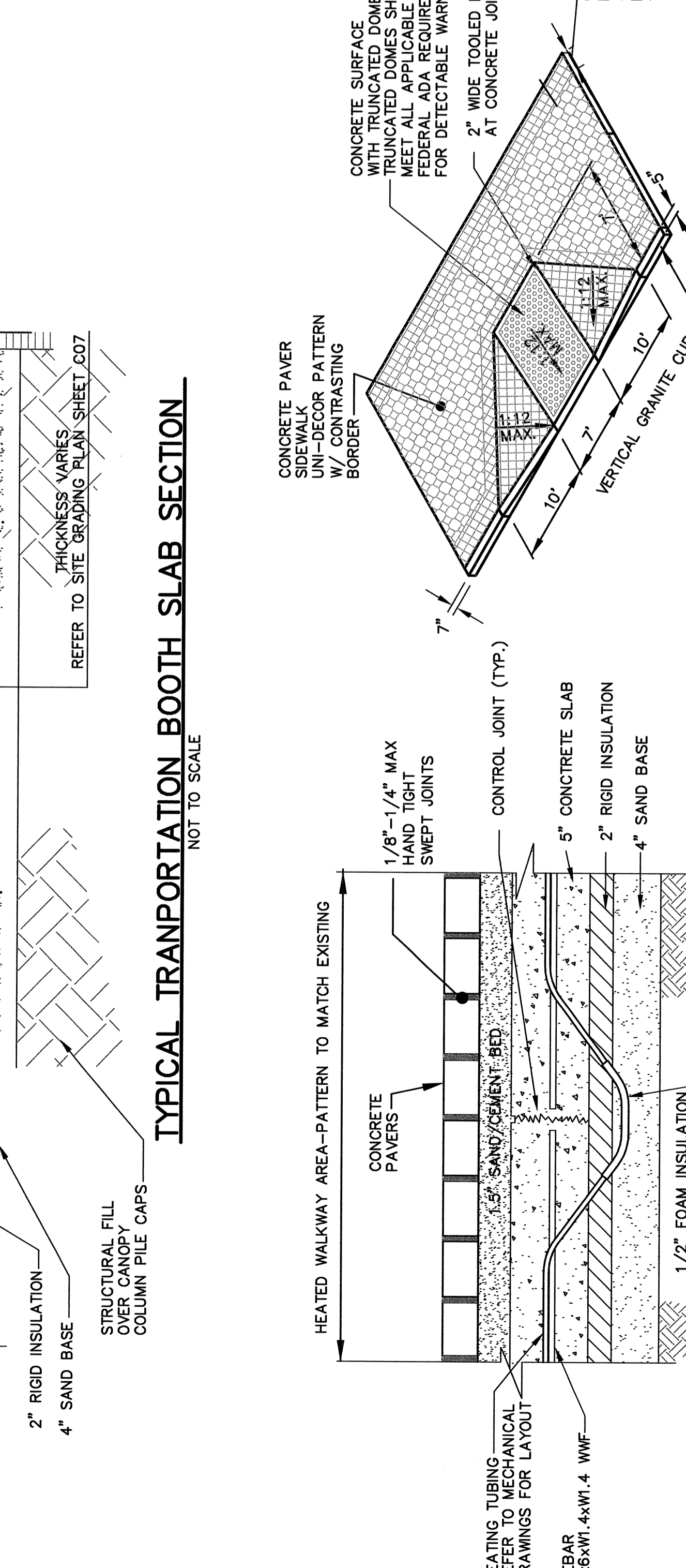
BUTT JOINT DETAIL
NOT TO SCALE



DOUBLE SWING GATE DETAIL
NOT TO SCALE



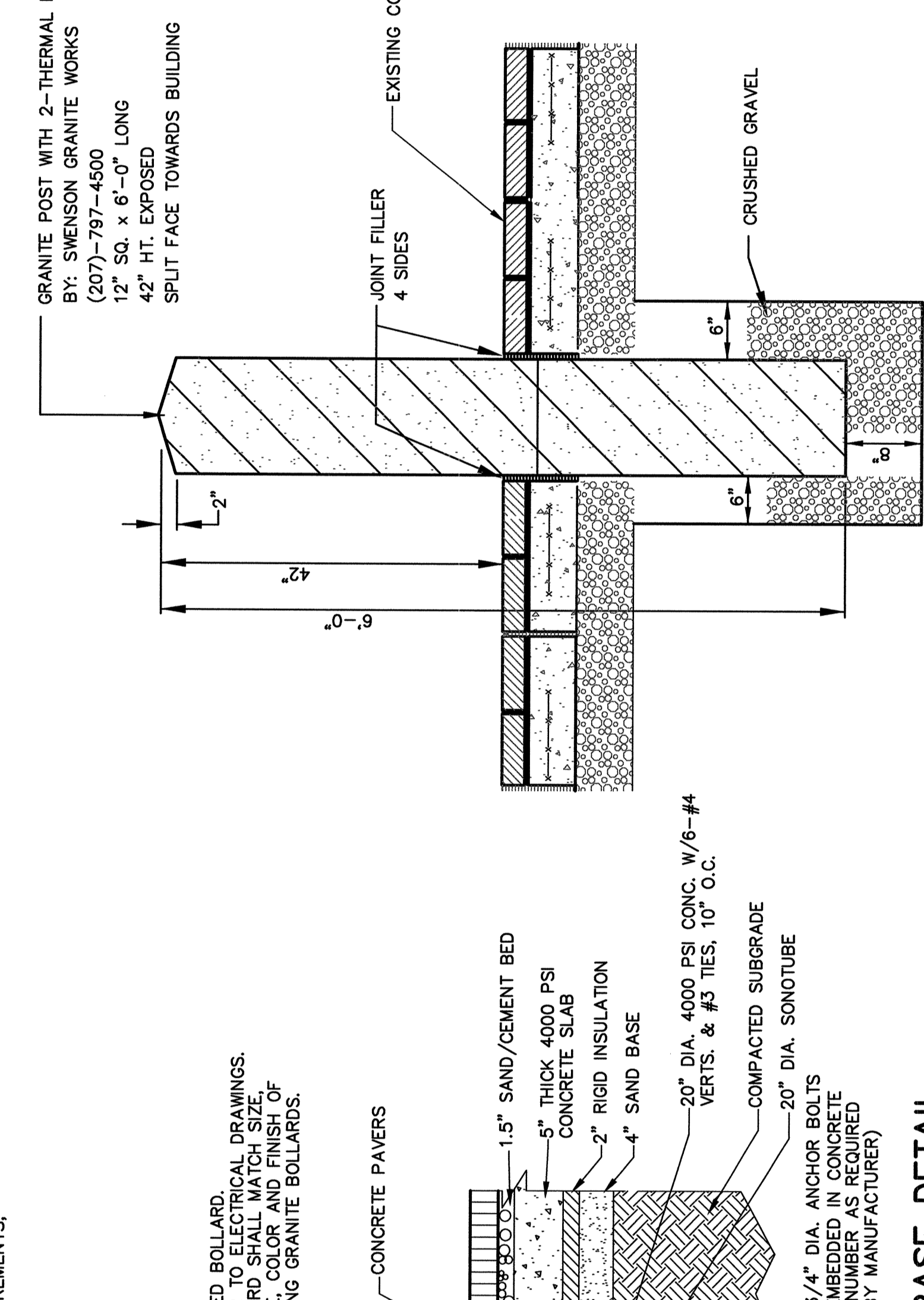
FENCE GATE POST DETAIL
NOT TO SCALE



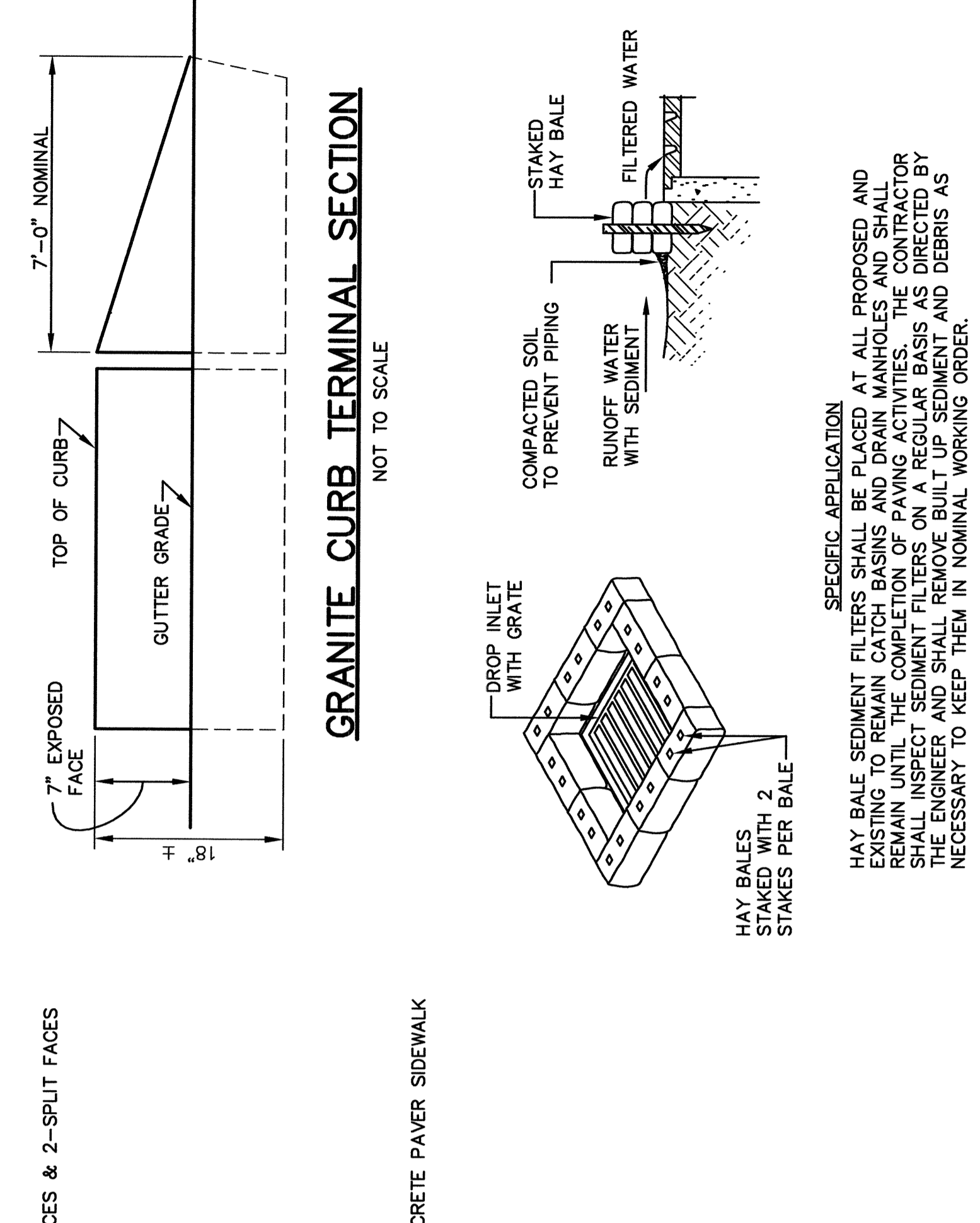
TYPICAL HEATED CONCRETE PAVER DETAIL
NOT TO SCALE

GENERAL HANDICAP RAMP NOTE:
HANDICAP RAMPS SHALL MEET ALL APPLICABLE ADA REQUIREMENTS, INCLUDING WARNING STRIP AND LIGHT REFLECTIVITY.

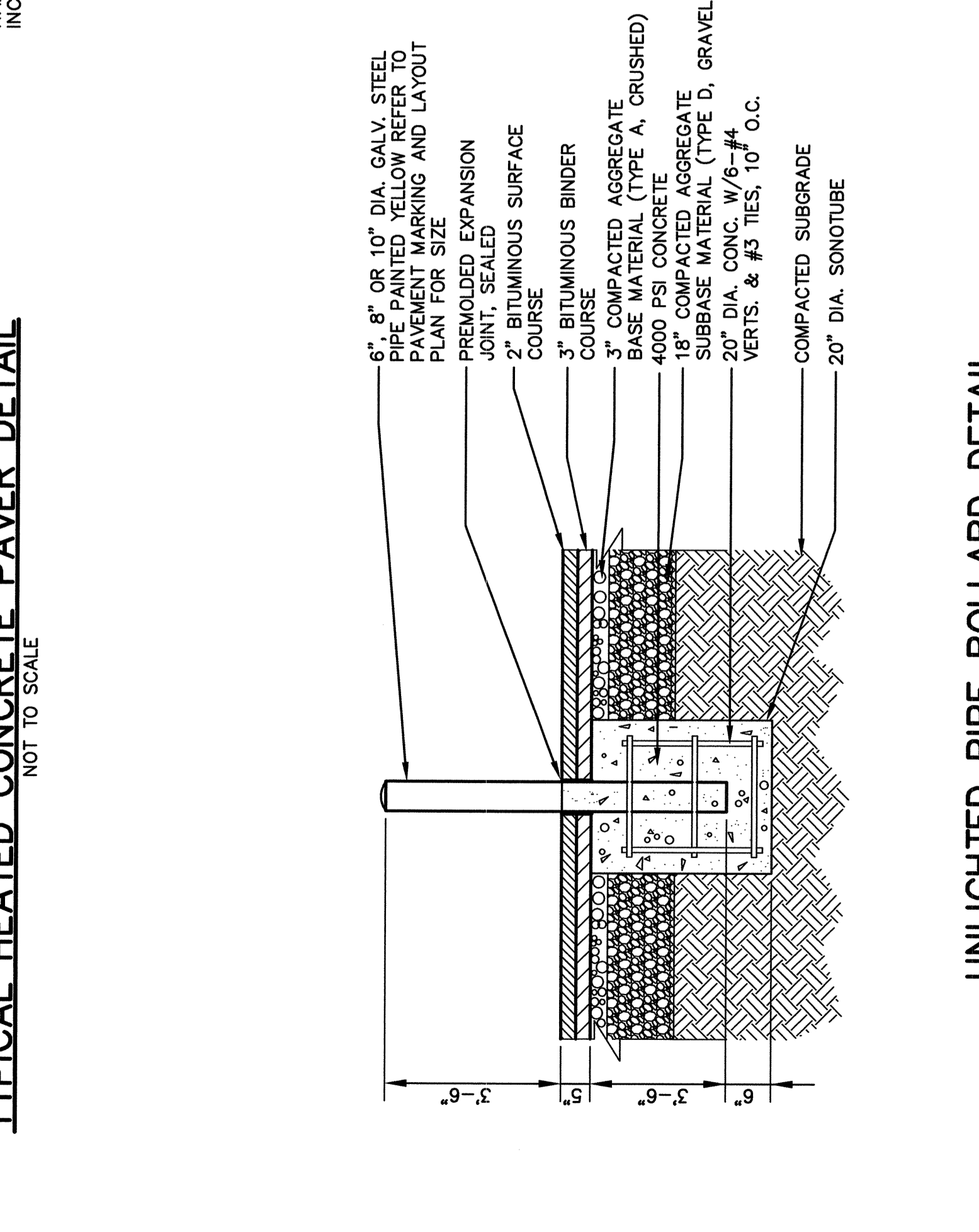
HANDICAP RAMP DETAIL
NOT TO SCALE



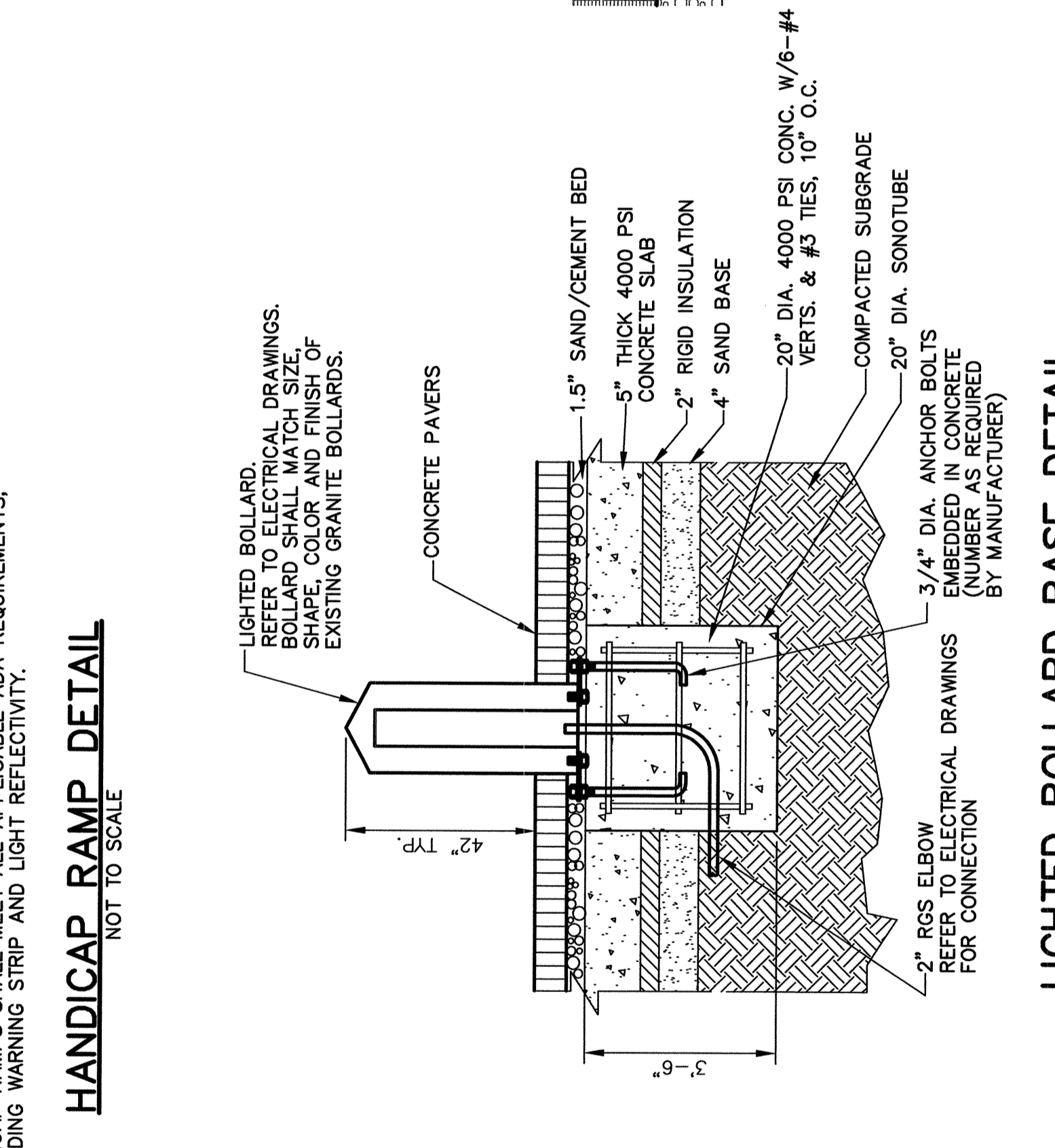
GRANITE BOLLARD DETAIL
NOT TO SCALE



GRANITE CURB TERMINAL SECTION
NOT TO SCALE



UNLIGHTED PIPE BOLLARD DETAIL
NOT TO SCALE



LIGHTED BOLLARD BASE DETAIL
NOT TO SCALE

GRANITE BOLLARD DETAIL
NOT TO SCALE

HAY BALE DROP INLET SEDIMENT FILTER
NOT TO SCALE

Dufresne-Henry
Portland, Maine
147 (207) 753-2111 • FAX (207) 775-8434
www.dufresne-henry.com

REVISION	DATE	DESCRIPTION	BY	CHECKED	APPROVED
1	4/22/04	CONFORED DRAWINGS ISSUED FOR CONSTRUCTION	DPN	DPN	DPN
	FEB. 23, 2004				

PHILLIP J. DOUGHTY ASSOCIATES, ARCHITECTS
302 U.S. ROUTE ONE, FALMOUTH, MAINE 04103 • 207.751.5346

ADDITIONS AND ALTERATIONS
EASTERTY EXPANSION OF BAGGAGE CLAIM FACILITY
PORTLAND INTERNATIONAL AIRPORT, PORTLAND, MAINE

ROADWAY NOTES AND DETAILS

APPROVED: _____
CHECKED: _____
DRAWN: _____
DESIGNED: _____
DATE: _____
SCALE: _____

C10
8
9-SHEET NO.

THIS DRAWING IS AN INSTRUMENT OF SERVICE AND SHALL REMAIN THE PROPERTY OF PHILLIP J. DOUGHTY ASSOCIATES, ARCHITECTS. NO PART OF THIS DRAWING OR ANY INFORMATION CONTAINED HEREIN IS TO BE REPRODUCED, COPIED, OR TRANSMITTED IN ANY FORM OR BY ANY MEANS, WITHOUT THE WRITTEN PERMISSION OF PHILLIP J. DOUGHTY ASSOCIATES, ARCHITECTS. ARCHITECTS OR CONTRACTORS SHALL BE RESPONSIBLE FOR VERIFYING ALL INFORMATION AND CONDITIONS PRIOR TO CONSTRUCTION.