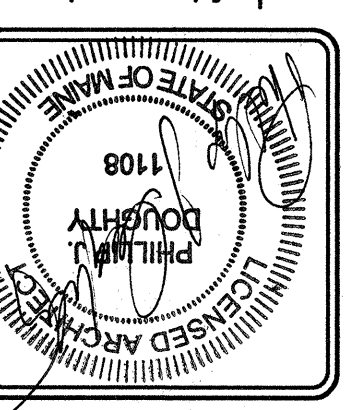


REV	DATE	DESCRIPTION	BY	CHKD	APPV
1	4/22/14	CONFORMED DRAWING ISSUED FOR CONSTRUCTION	JF	JF	JF
2	FEB 28, 2014		JF	JF	JF



ARCHITECTS
PDPA
 PHILIP J. DOUGHTY ASSOC. • ARCHITECTS
 302 U.S. ROUTE ONE, FALMOUTH, MAINE 04103 • 207.781.5346

NEW WALL SECTIONS

EXPANSION OF BAGGAGE CLAIM FACILITY
 PORTLAND INTERNATIONAL AIRPORT, PORTLAND, MAINE

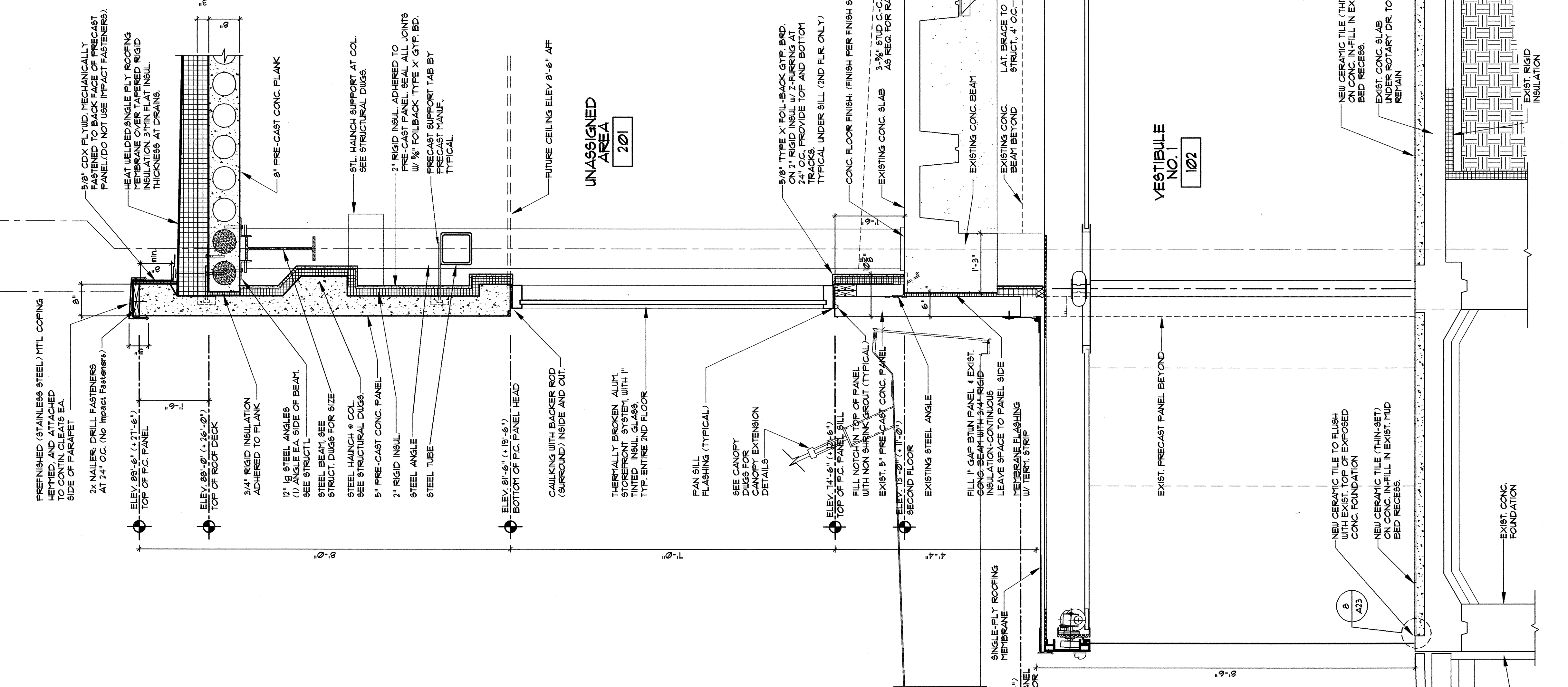
DATE: FEB 2014
 DESIGNED: JF
 CHECKED: JF
 APPROVED: JF

SHEET NO. 8
 000-000
 1108

A9

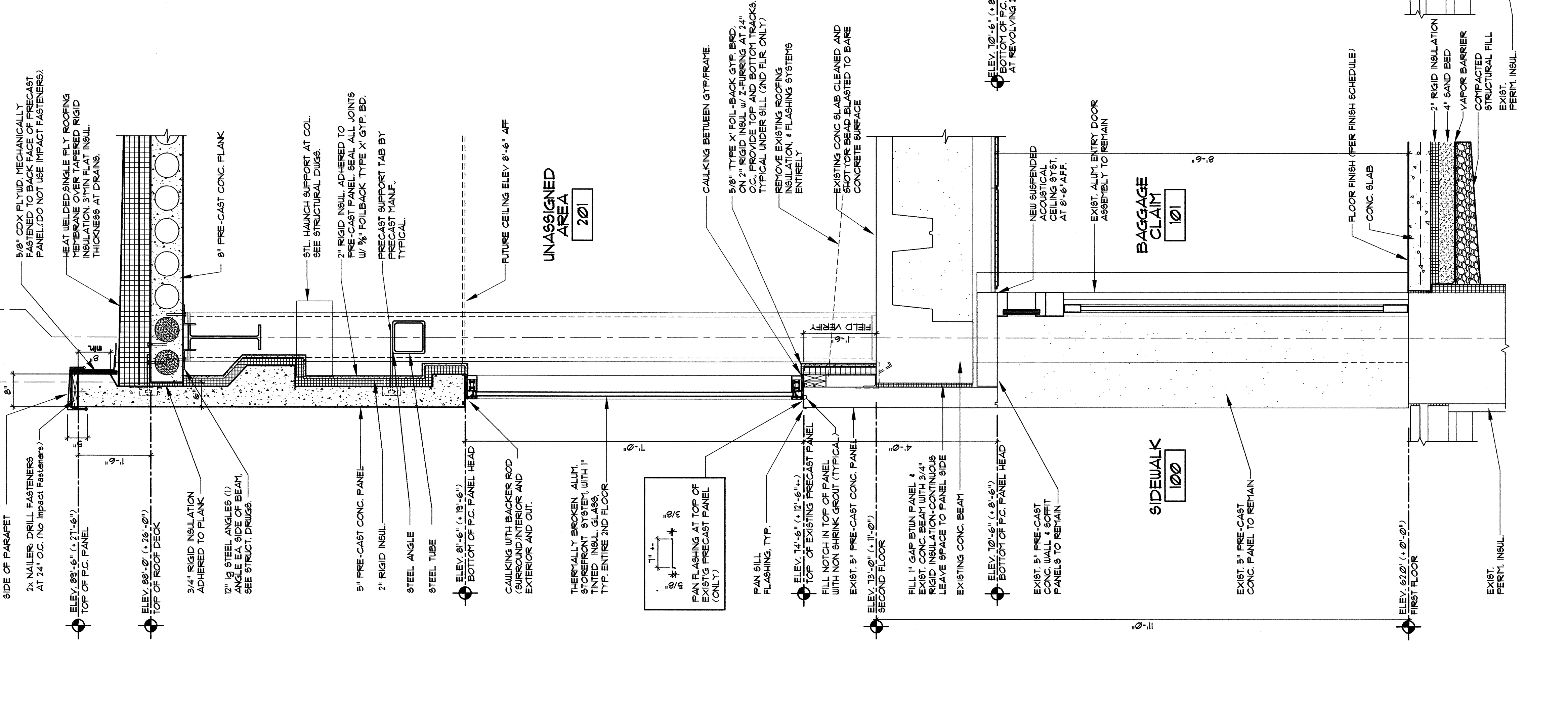
Y,1

Z



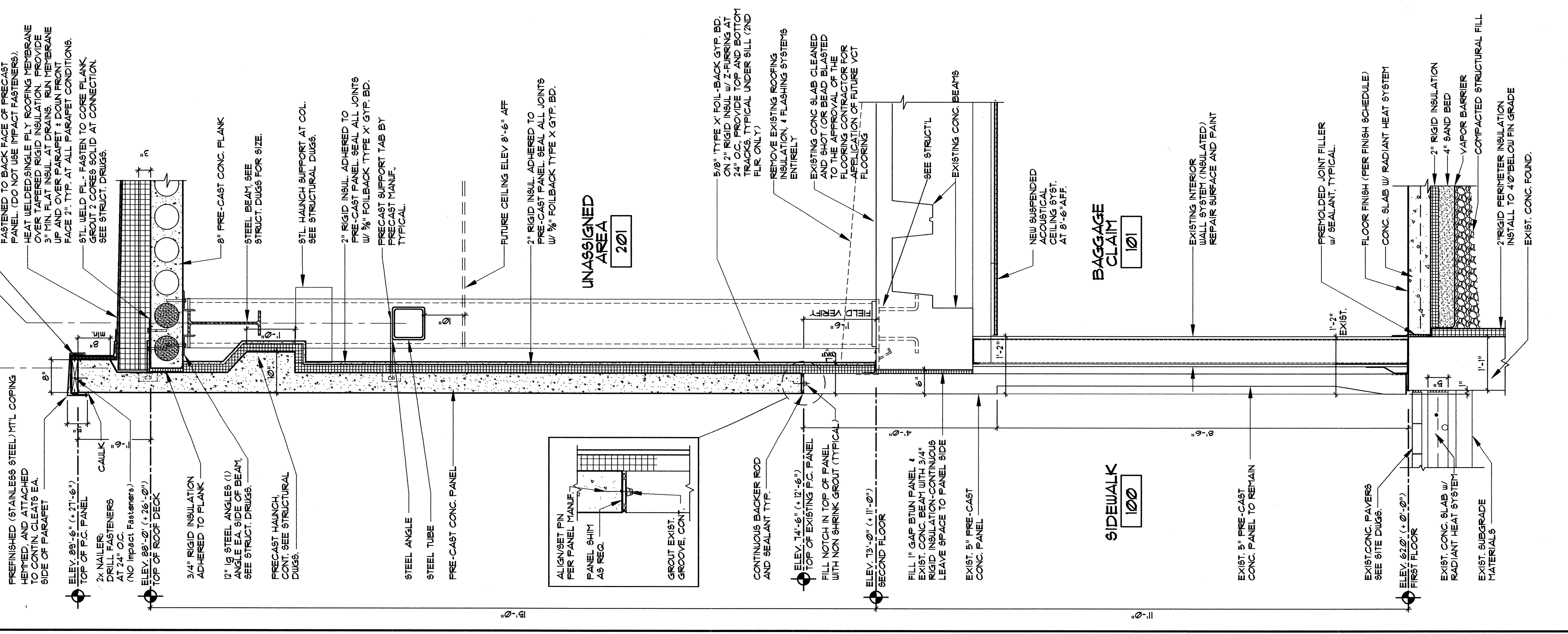
Y,1

Z



Y,1

Z



THIS DRAWING IS AN INSTRUMENT OF SERVICE AND SHALL REMAIN THE PROPERTY OF PHILIP J. DOUGHTY ASSOCIATES, INC. NO REUSE OR REPRODUCTION OF THIS DRAWING OR ANY PART THEREOF WITHOUT THE WRITTEN PERMISSION OF PHILIP J. DOUGHTY ASSOCIATES, INC. IS PROHIBITED.

SEE STRUCTURAL DWGS FOR FOUNDATION DETAILS