

REV#	DATE	BY	CHKD	APPV	DESCRIPTION
1	4/22/84	JF	JF		CONFORMED DRAWING ISSUED FOR CONSTRUCTION
2	FEB 29, 2004	JF	JF		REVISED DRAWING

PHILIP J. DOUGHTY ARCHITECTS
 302 U.S. ROUTE ONE, FALMOUTH, MAINE 04105 • 207.781.5346

PHILIP J. DOUGHTY
 ARCHITECTS

APPROVED: [Signature]

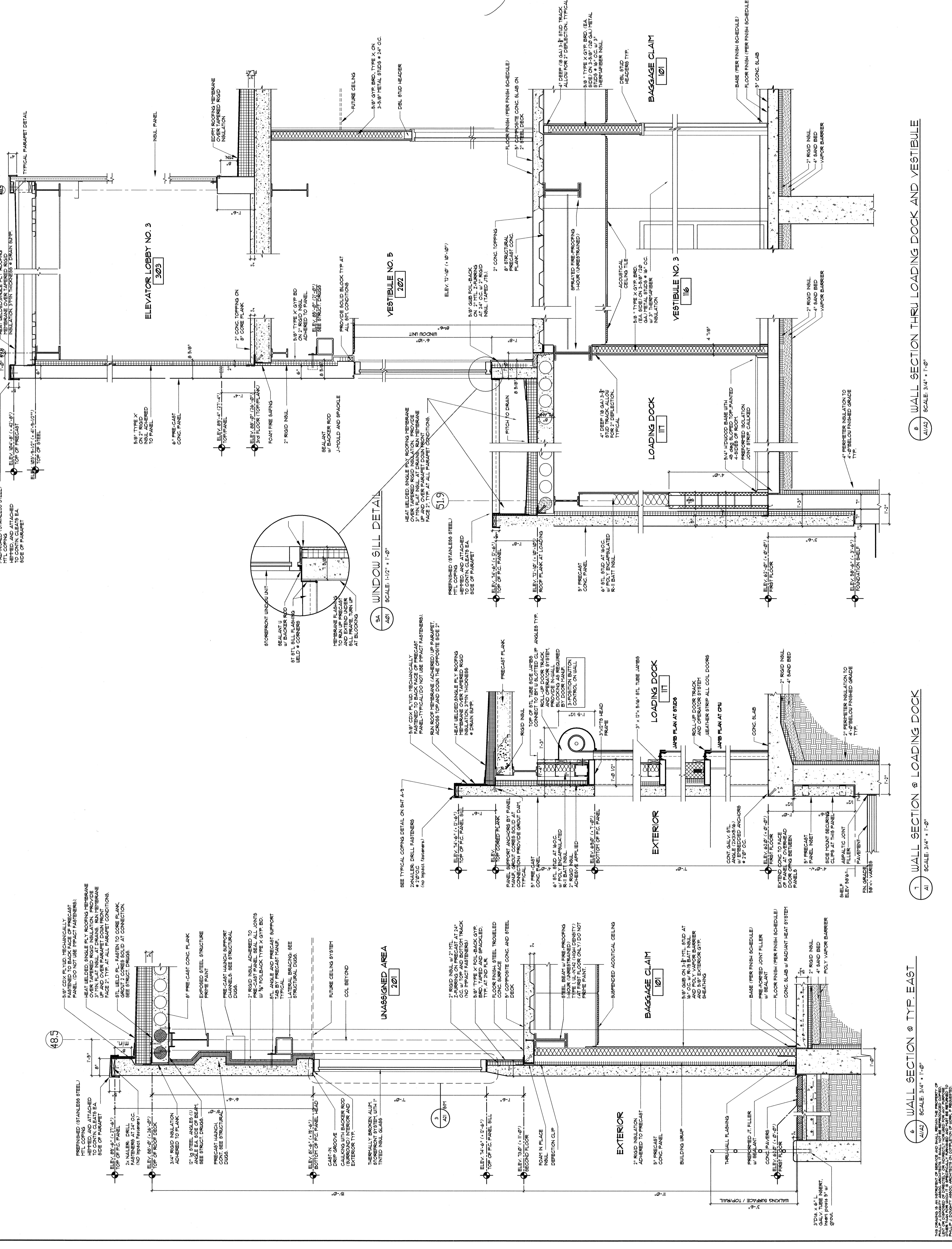
EXPANSION OF BAGGAGE CLAIM FACILITY
 PORTLAND INTERNATIONAL AIRPORT, PORTLAND, MAINE

NEW WALL SECTIONS

SCALE: 3/4" = 1'-0"

SHEET NO. 116

A11



THIS DRAWING IS AN INSTRUMENT OF SERVICE AND SHALL REMAIN THE PROPERTY OF PHILIP J. DOUGHTY ARCHITECTS. IT IS TO BE USED ONLY FOR THE PROJECT AND SITE SPECIFICALLY IDENTIFIED HEREON. NO PART OF THIS DRAWING IS TO BE REPRODUCED OR TRANSMITTED IN ANY FORM OR BY ANY MEANS, ELECTRONIC OR MECHANICAL, WITHOUT THE WRITTEN PERMISSION OF PHILIP J. DOUGHTY ARCHITECTS. ARCHITECTS ON BEHALF OF WORKER'S COMPENSATION BOARD.