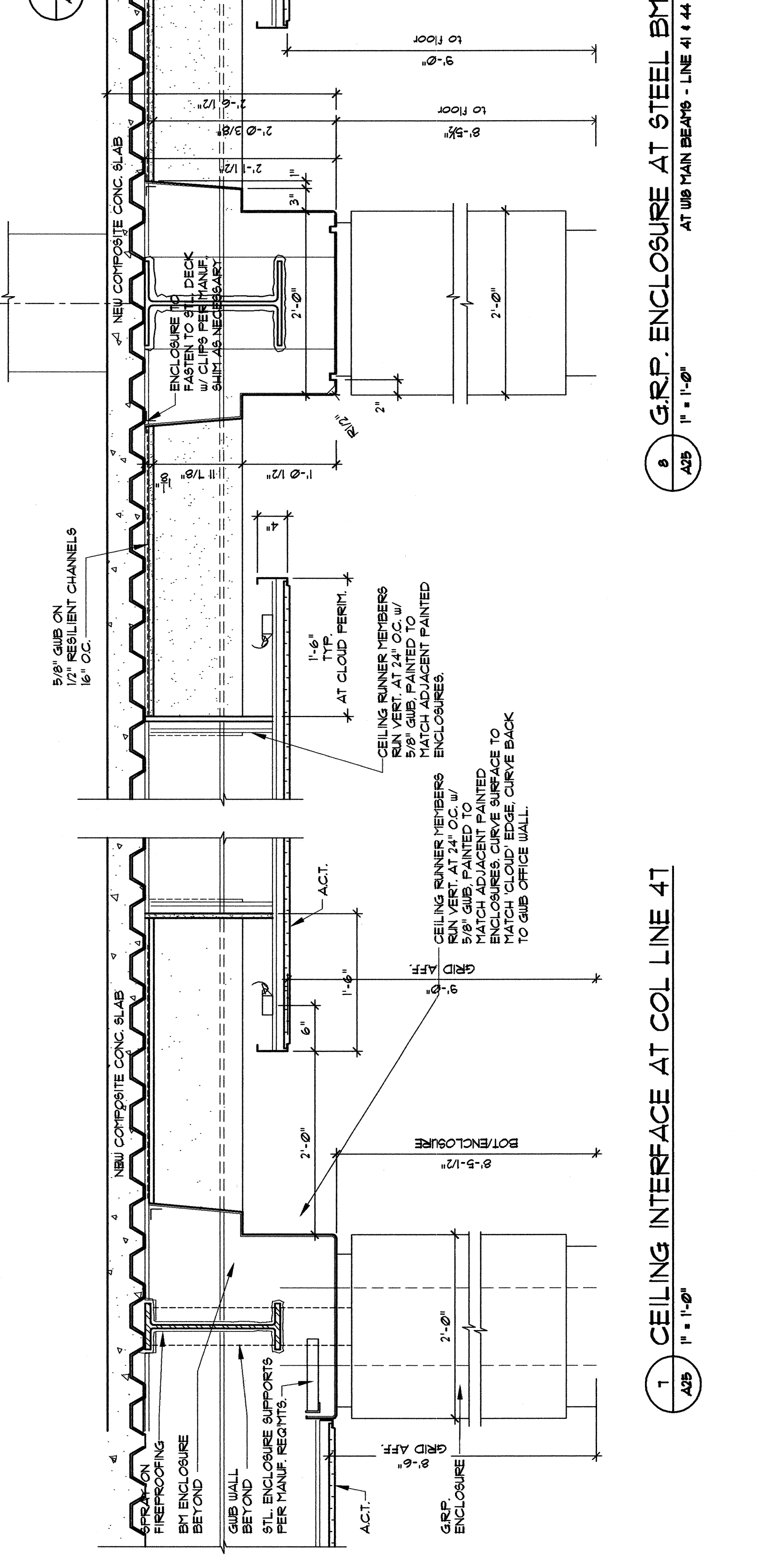
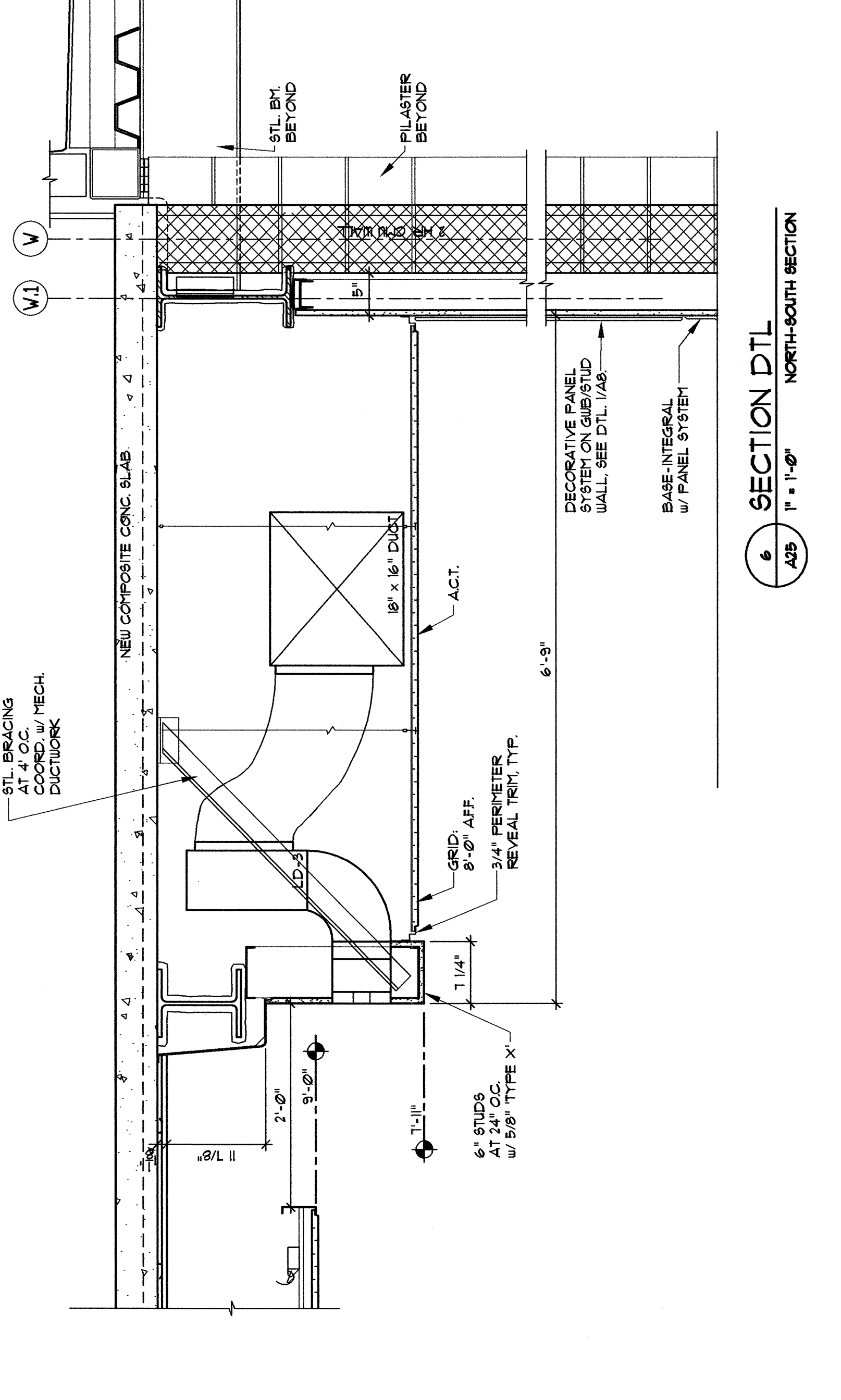
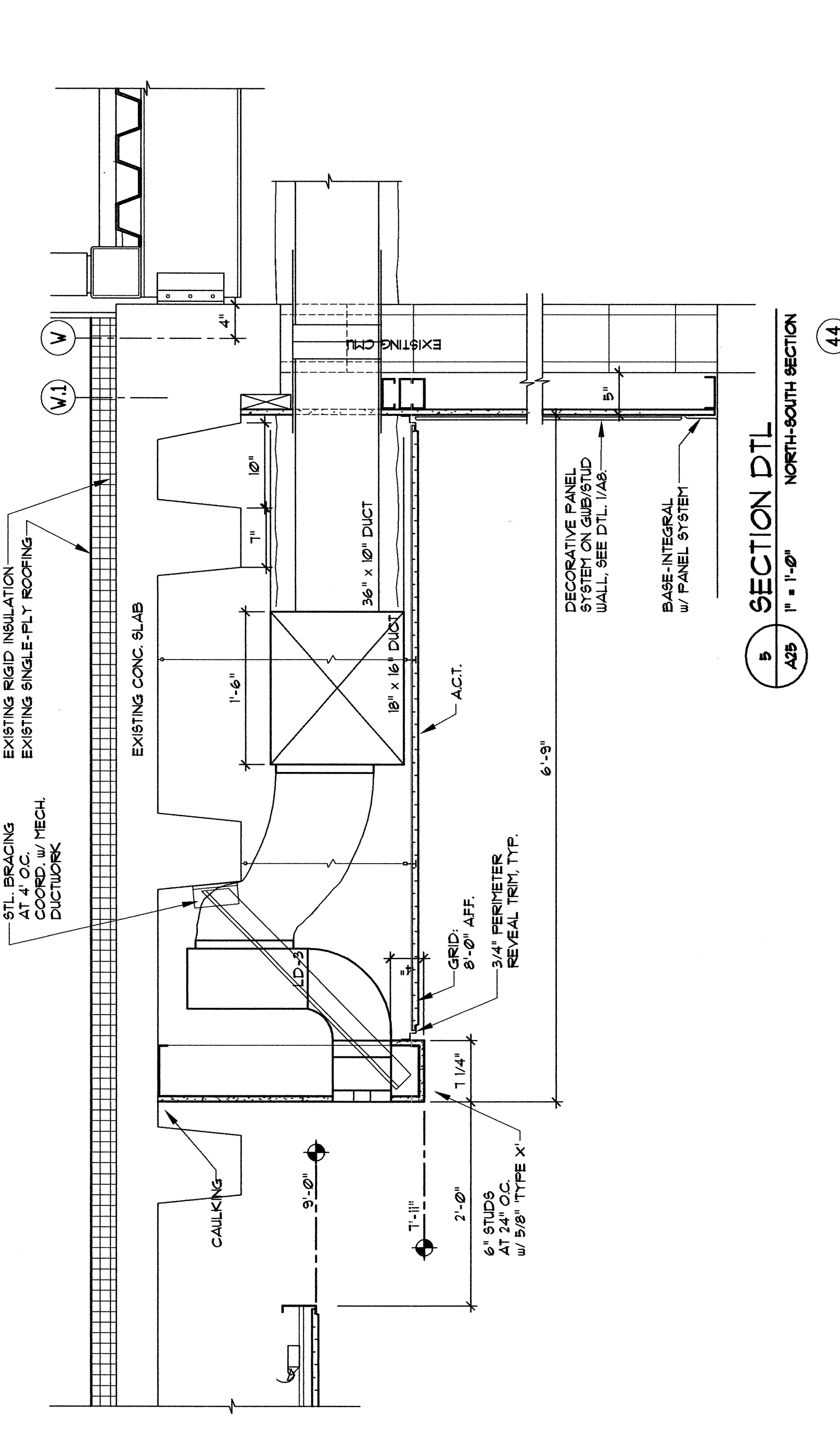
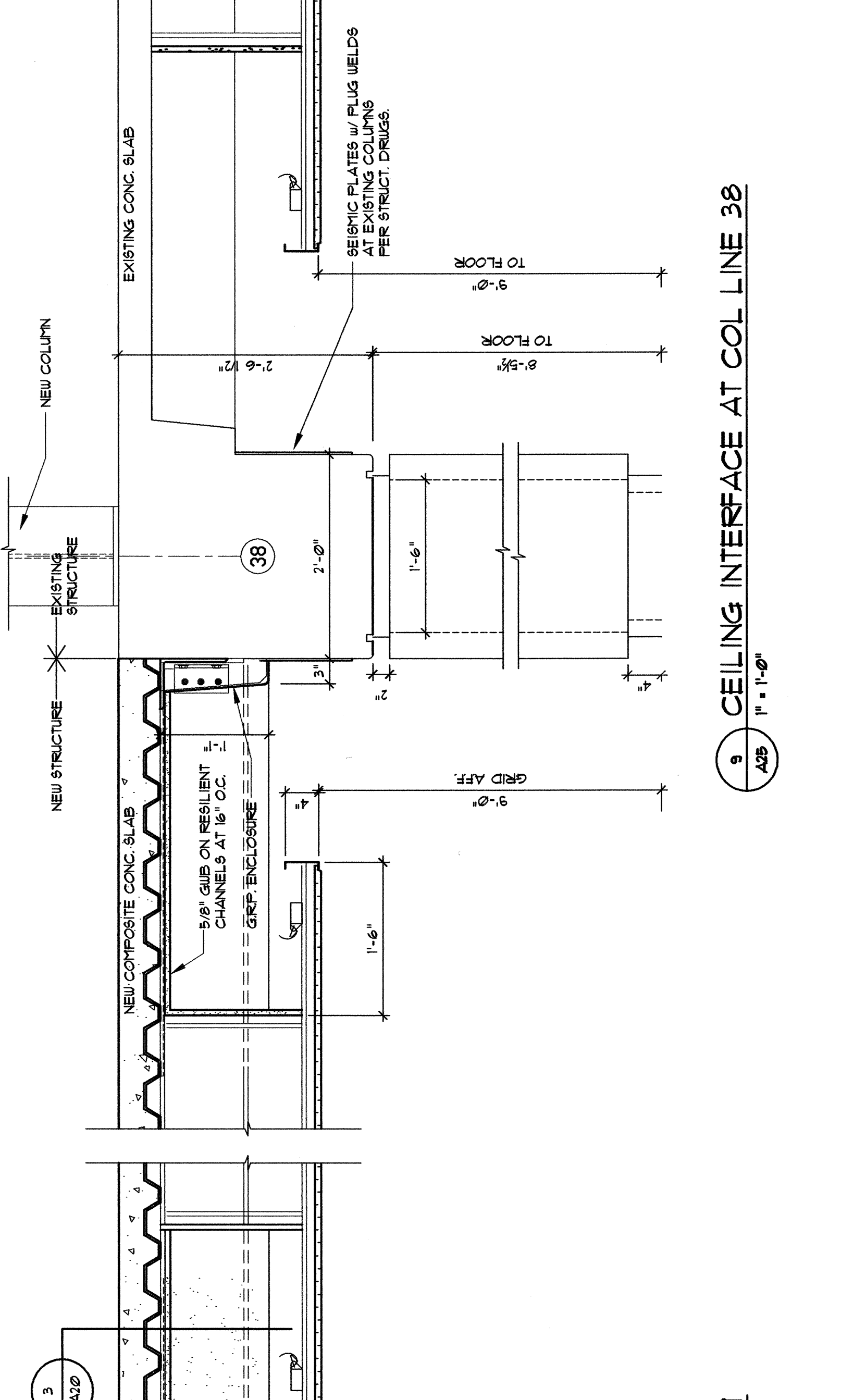


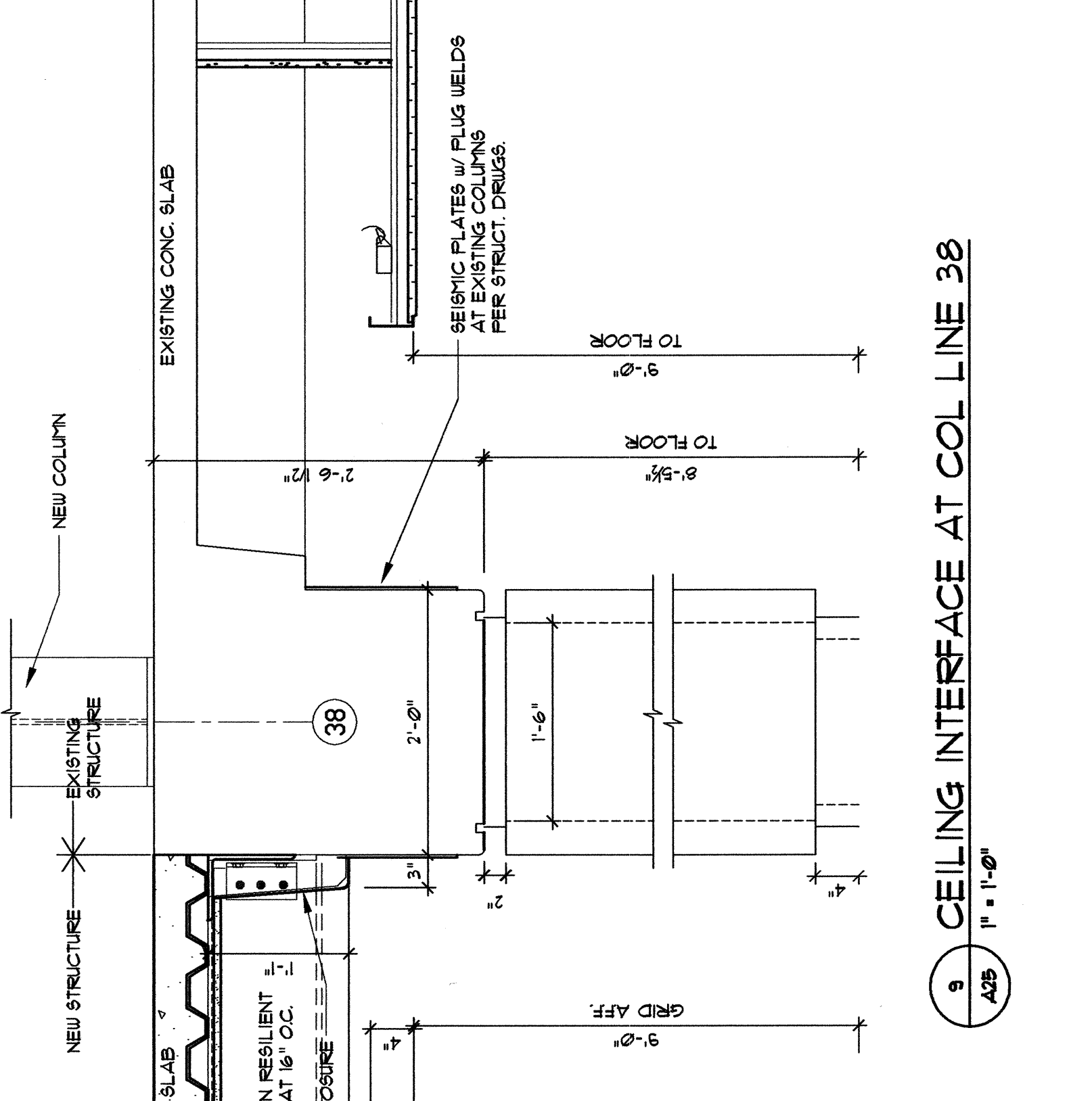
3 GRP. ENCLOSURE AT STEEL BM
AT INTERMEDIATE WUB BEAMS
1/4" = 1'-0"



7 CEILING INTERFACE AT COL LINE 41
1/4" = 1'-0"



8 GRP. ENCLOSURE AT STEEL BM
AT WUB MAIN BEAMS - LINE 41 & 44
1/4" = 1'-0"



9 CEILING INTERFACE AT COL LINE 38
1/4" = 1'-0"

REVISION	DESCRIPTION	DATE
1	COVERED DRAWINGS ISSUED FOR CONSTRUCTION	1/22/04
2	REVISED	FEB 23 2004

PHILIP J. DOUGHTY ARCHITECTS
Architects 362 U.S. Route One, Falmouth, Maine 04105 • 207.781.8348

APPROVED: _____
CHECKED: _____
DESIGNED BY: _____
DATE: _____
SCALE: _____

SECTION DETAILS

EXPANSION OF BAGGAGE CLAIM FACILITY
PORTLAND INTERNATIONAL AIRPORT, PORTLAND, MAINE

PHILIP J. DOUGHTY ARCHITECTS
LICENSED ARCHITECT
STATE OF MAINE
1008

PHD
000-000
9 1/4
SHEET NO.
A20

PHILIP J. DOUGHTY ARCHITECTS AND ASSOCIATES, INC. IS AN EQUAL OPPORTUNITY EMPLOYER. THE FIRM DOES NOT discriminate on the basis of race, sex, religion, national origin, or age. All work is subject to the terms and conditions of the contract documents. © 2004 PHILIP J. DOUGHTY ARCHITECTS AND ASSOCIATES, INC. ALL RIGHTS RESERVED.