

REV	DATE	BY	CHKD	APP'D	DESCRIPTION
1	4/22/14	JTF	JTF		CORRECTED DRAWING ISSUED FOR CONSTRUCTION
2	FEB 28, 2014	JTF	JTF		

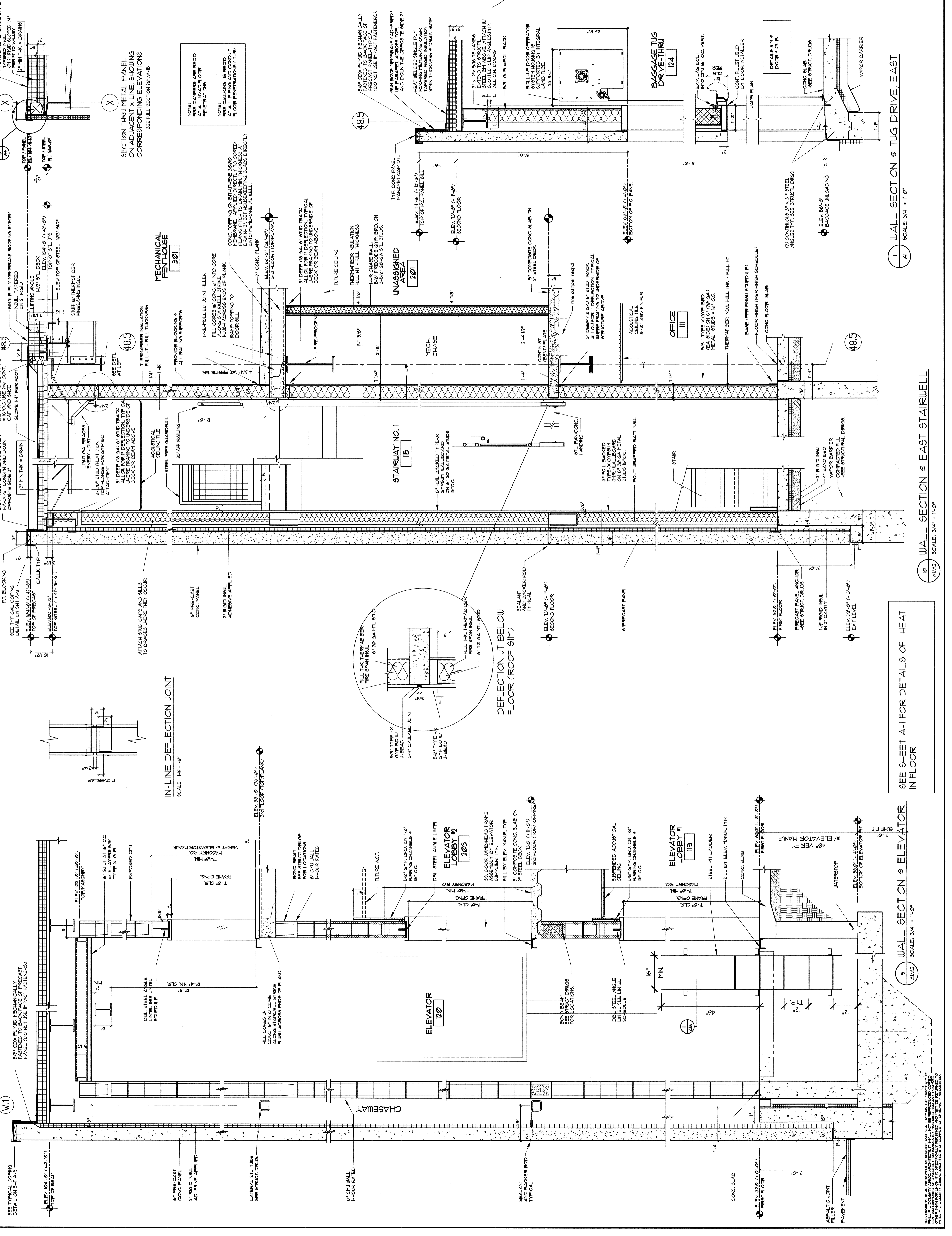
PHILIP J. DOUGHTY ARCHITECTS  
 302 U.S. ROUTE ONE, FALMOUTH, MAINE 04105 • 207.781.5346



EXPANSION OF BAGGAGE CLAIM FACILITY  
 PORTLAND INTERNATIONAL AIRPORT, PORTLAND, MAINE  
 ADDITIONS AND ALTERATIONS  
 NEW WALL SECTIONS

SCALE: 3/4" = 1'-0"  
 DATE: FEB 2014  
 DESIGNED: JTF  
 DRAWN: JTF  
 CHECKED: JTF  
 APPROVED: JTF

SHEET NO. 8  
 PROJECT NO. 000-000  
 A12



SECTION THRU METAL PANEL ON ADJACENT X LINE SHOWING CORRESPONDING ELEVATIONS SEE FULL SECTION 20-A-15

MECHANICAL PENTHOUSE 301

UNASSIGNED AREA 201

STAIRWAY NO. 1 115

OFFICE 111

BAGGAGE TUG DRIVE-THRU 124

IN-LINE DEFLECTION JOINT SCALE: 1/8" = 1'-0"

DEFLECTION JT BELOW FLOOR (ROOF SIM)

SEE SHEET A-1 FOR DETAILS OF HEAT IN FLOOR

WALL SECTION @ ELEVATOR SCALE: 3/4" = 1'-0"

WALL SECTION @ TUG DRIVE, EAST SCALE: 3/4" = 1'-0"

THIS DRAWING IS AN INSTRUMENT OF SERVICE AND SHALL REMAIN THE PROPERTY OF PHILIP J. DOUGHTY ARCHITECTS. NO PART OF THIS DRAWING IS TO BE REPRODUCED OR TRANSMITTED IN ANY FORM OR BY ANY MEANS, ELECTRONIC OR MECHANICAL, WITHOUT THE WRITTEN PERMISSION OF PHILIP J. DOUGHTY ARCHITECTS. A PROFESSIONAL ARCHITECT IN THE STATE OF MAINE.