

REVISION	DESCRIPTION	DATE
0		

DRAWN	CHECKED	APPROVED	DATE
JF			FEB 23 2004

PHILIP J. DOUGHTY ASSOCIATES ARCHITECTS
 362 US. ROUTE ONE, FALMOUTH, MAINE 04105 • 207.781.5346

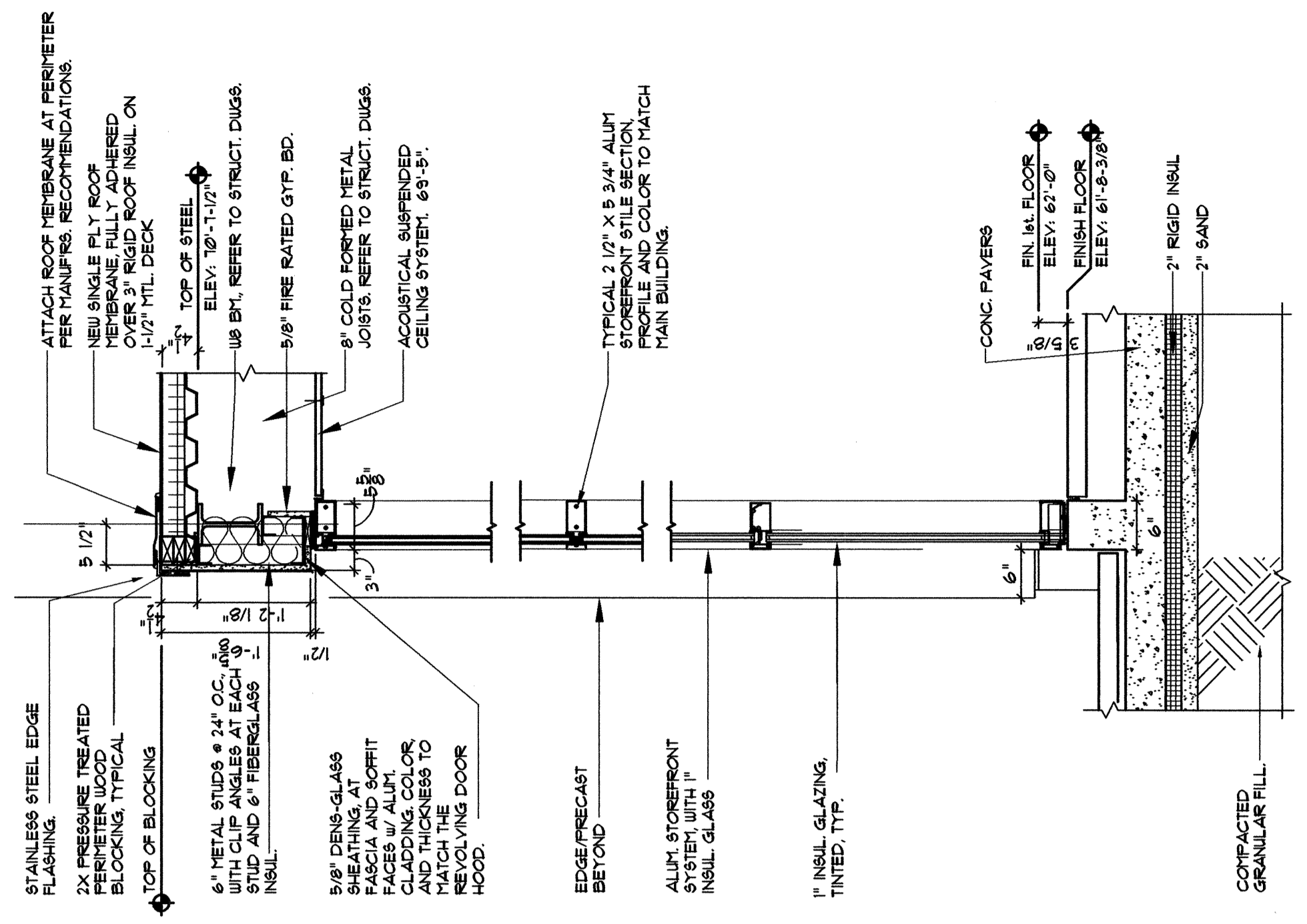
PHILIP J. DOUGHTY ASSOCIATES ARCHITECTS
 PORTLAND INTERNATIONAL JEFFRY PORTLAND, MAINE

EXPANSION OF BAGGAGE CLAIM FACILITY
 ADDITIONS AND ALTERATIONS

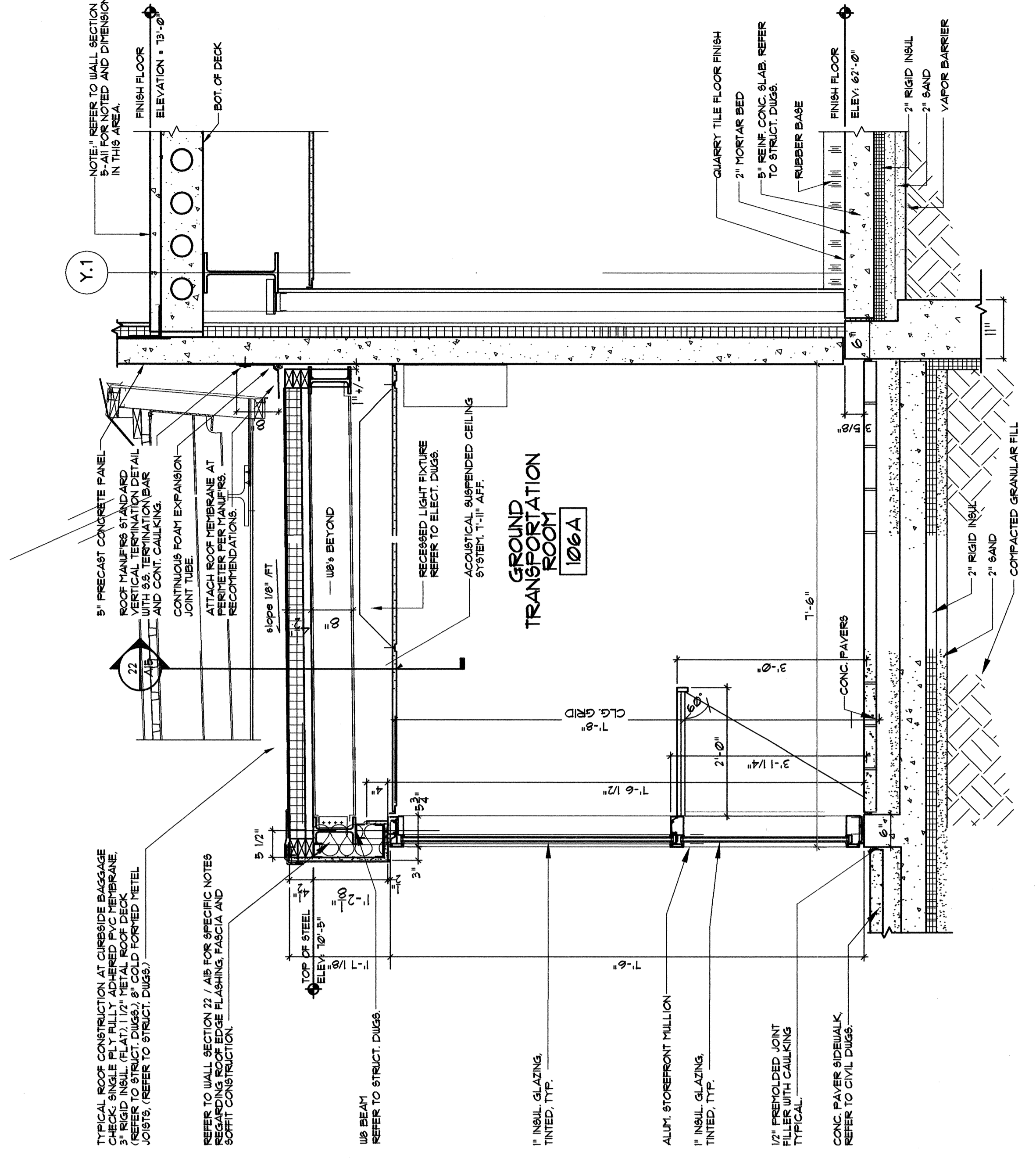
NEW WALL SECTIONS

DATE: FEB 2004
 SCALE: 3/4" = 1'-0"

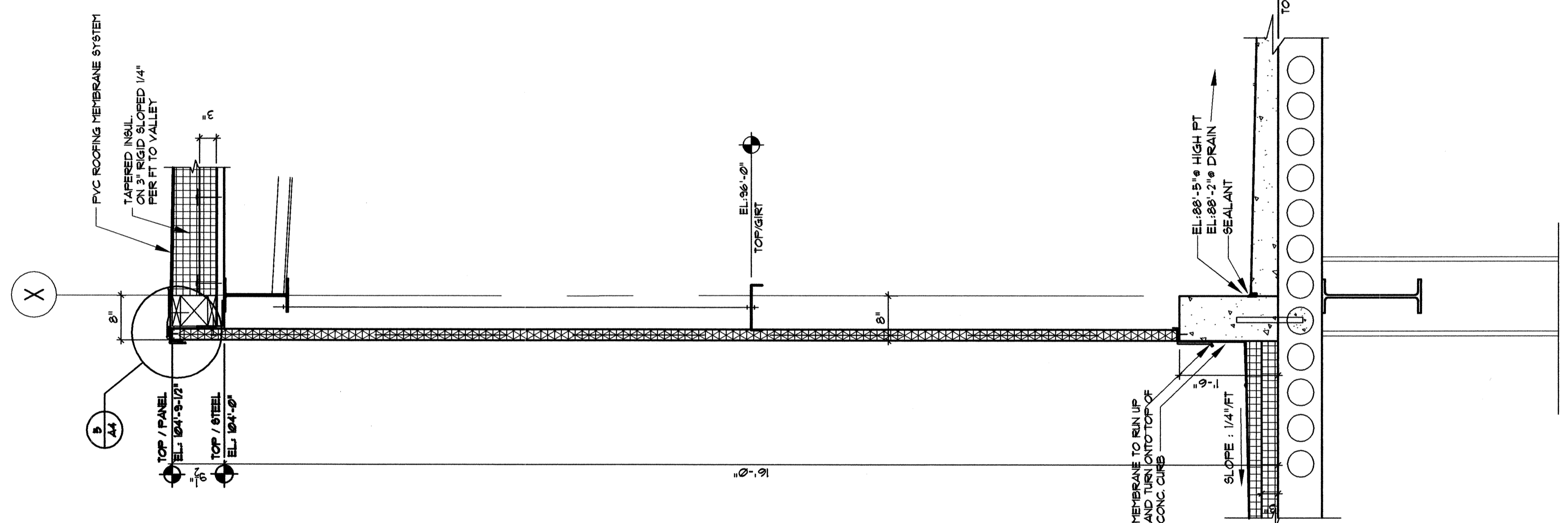
SHEET NO. A15
 000-009 94 8
 8



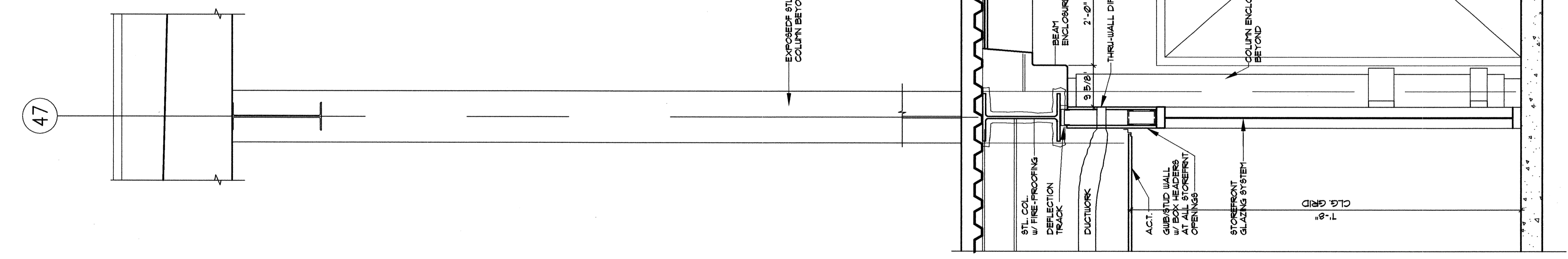
22 WALL SECTION @ GROUND TRANS. RM.
 SCALE: 3/4" = 1'-0"



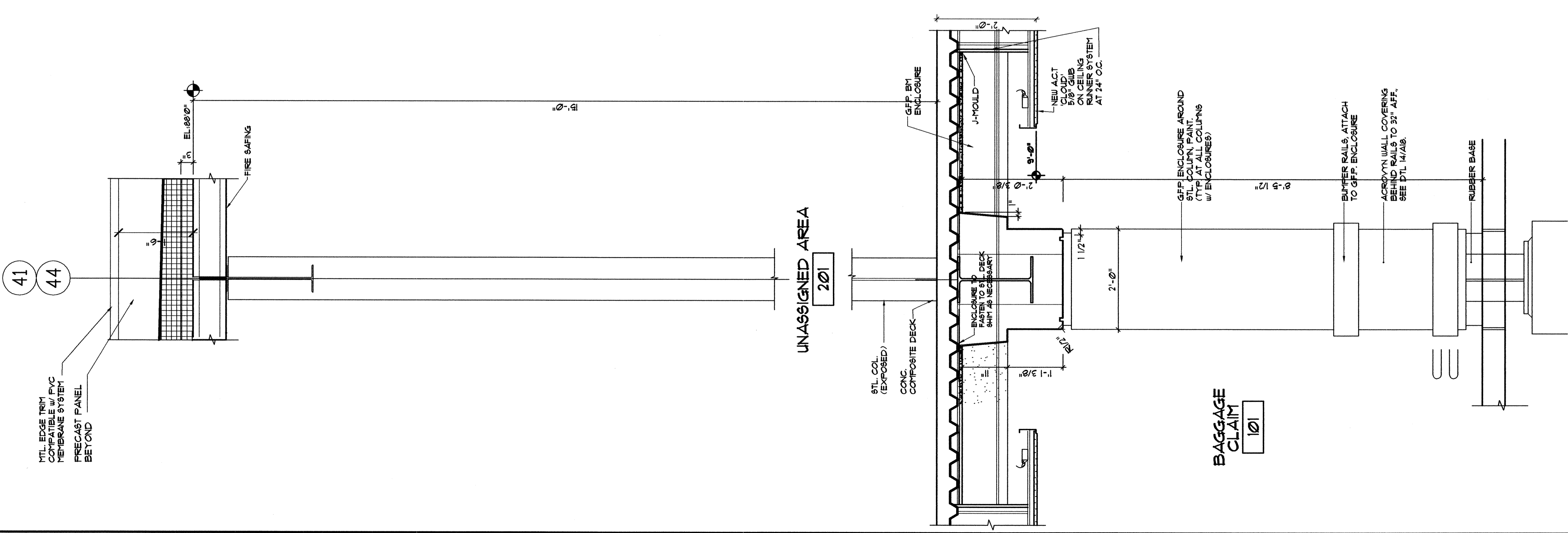
21 WALL SECTION @ GROUND TRANS. RM.
 SCALE: 3/4" = 1'-0"



20 WALL SECTION @ Penthouse X Line
 SCALE: 3/4" = 1'-0"



19 WALL SECTION @ Col. Line 41/44
 SCALE: 3/4" = 1'-0"



18 WALL SECTION @ Col. Line 41/44
 SCALE: 3/4" = 1'-0"

THIS DRAWING IS THE PROPERTY OF PHILIP J. DOUGHTY ASSOCIATES ARCHITECTS. IT IS TO BE USED ONLY FOR THE PROJECT AND SITE SPECIFICALLY IDENTIFIED AND MAY BE RETURNED TO PHILIP J. DOUGHTY ASSOCIATES ARCHITECTS UPON COMPLETION OF WORK. IT IS NOT TO BE REPRODUCED OR COPIED IN ANY MANNER WITHOUT THE WRITTEN PERMISSION OF PHILIP J. DOUGHTY ASSOCIATES ARCHITECTS.