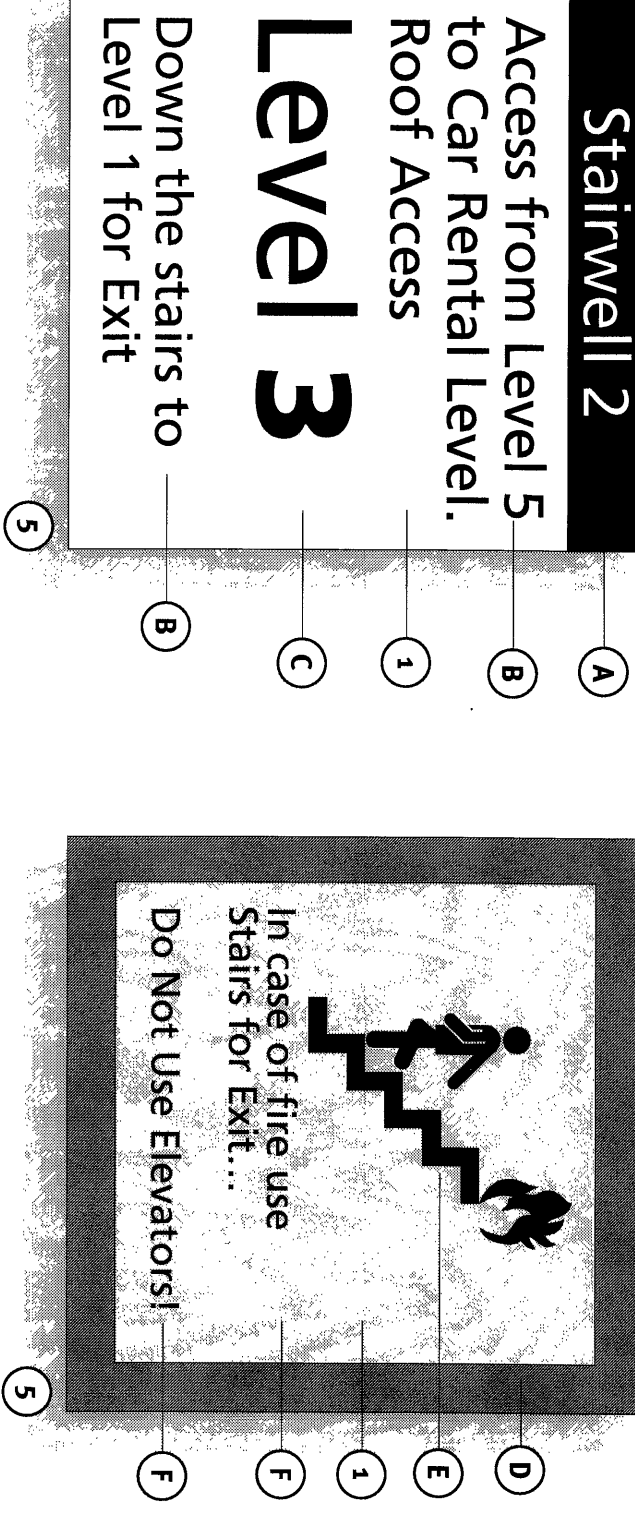


Stairwell 2

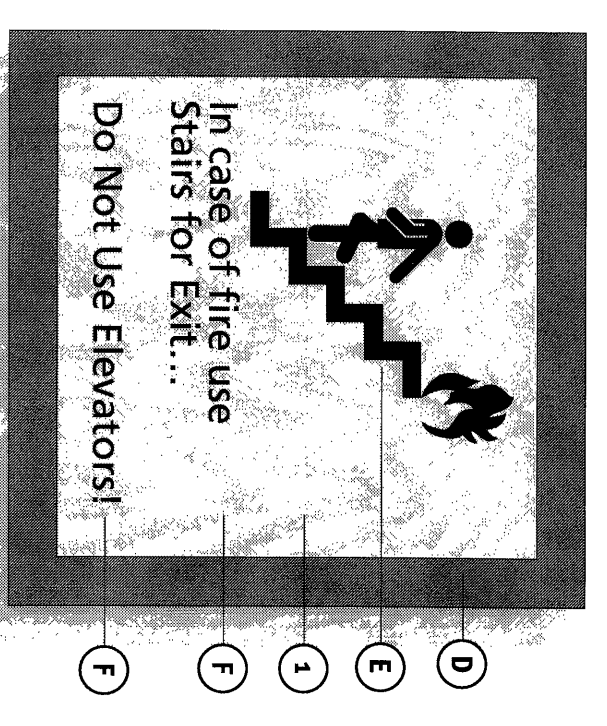
Access from Level 5 to Car Rental Level. Roof Access

Level 3

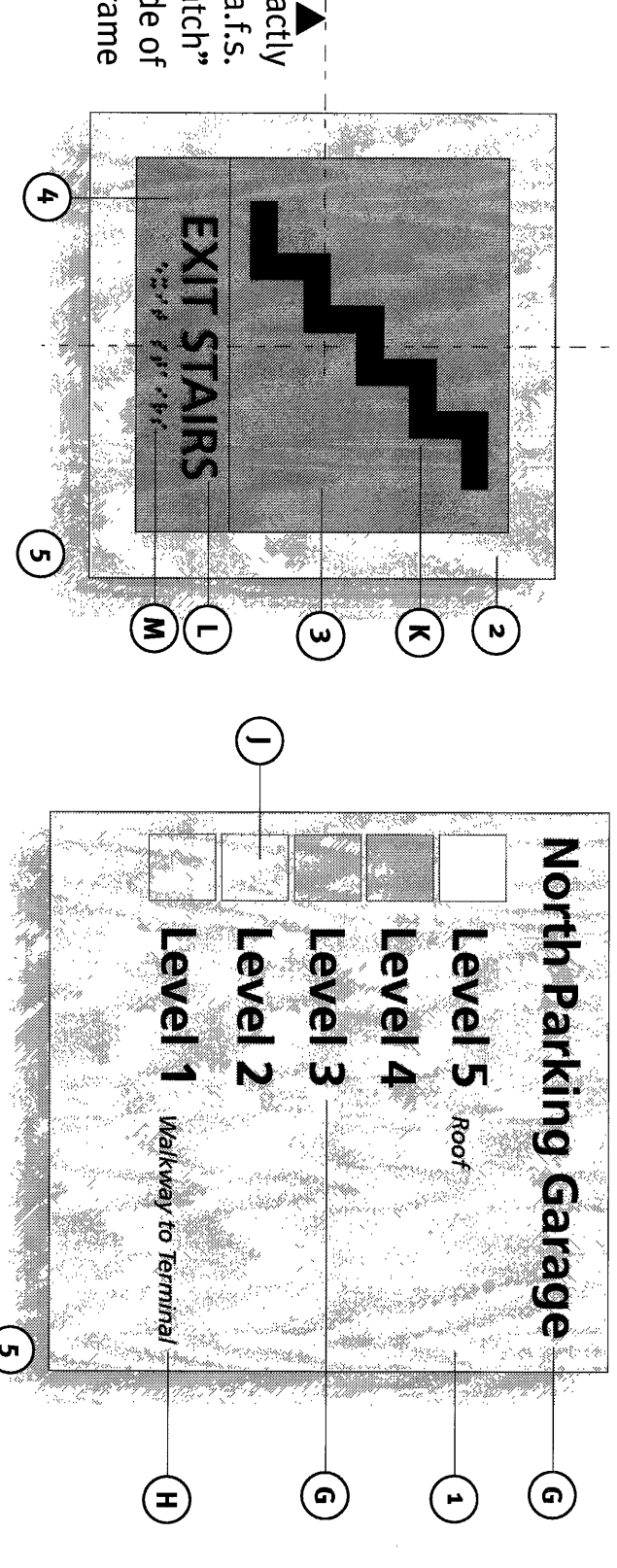
Down the stairs to Level 1 for Exit



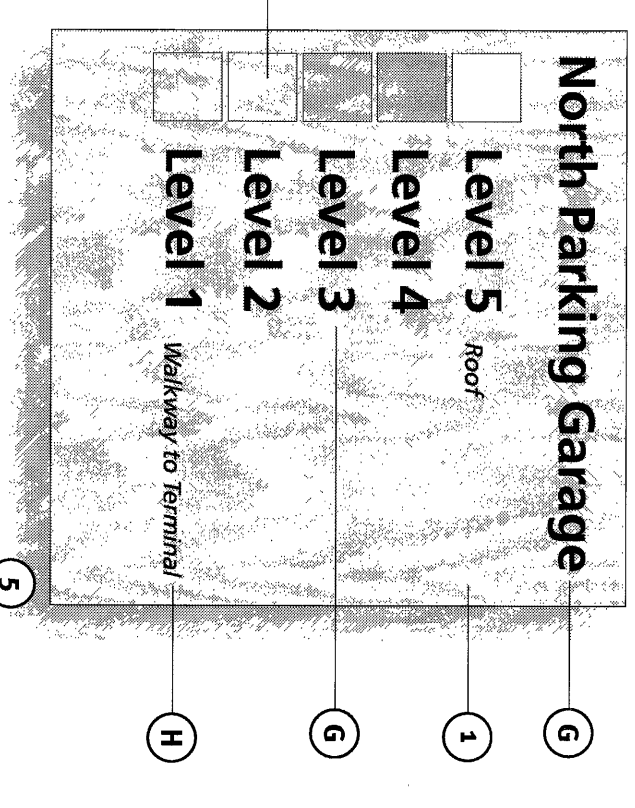
Sign Type F1



Sign Type F2



Sign Type F3



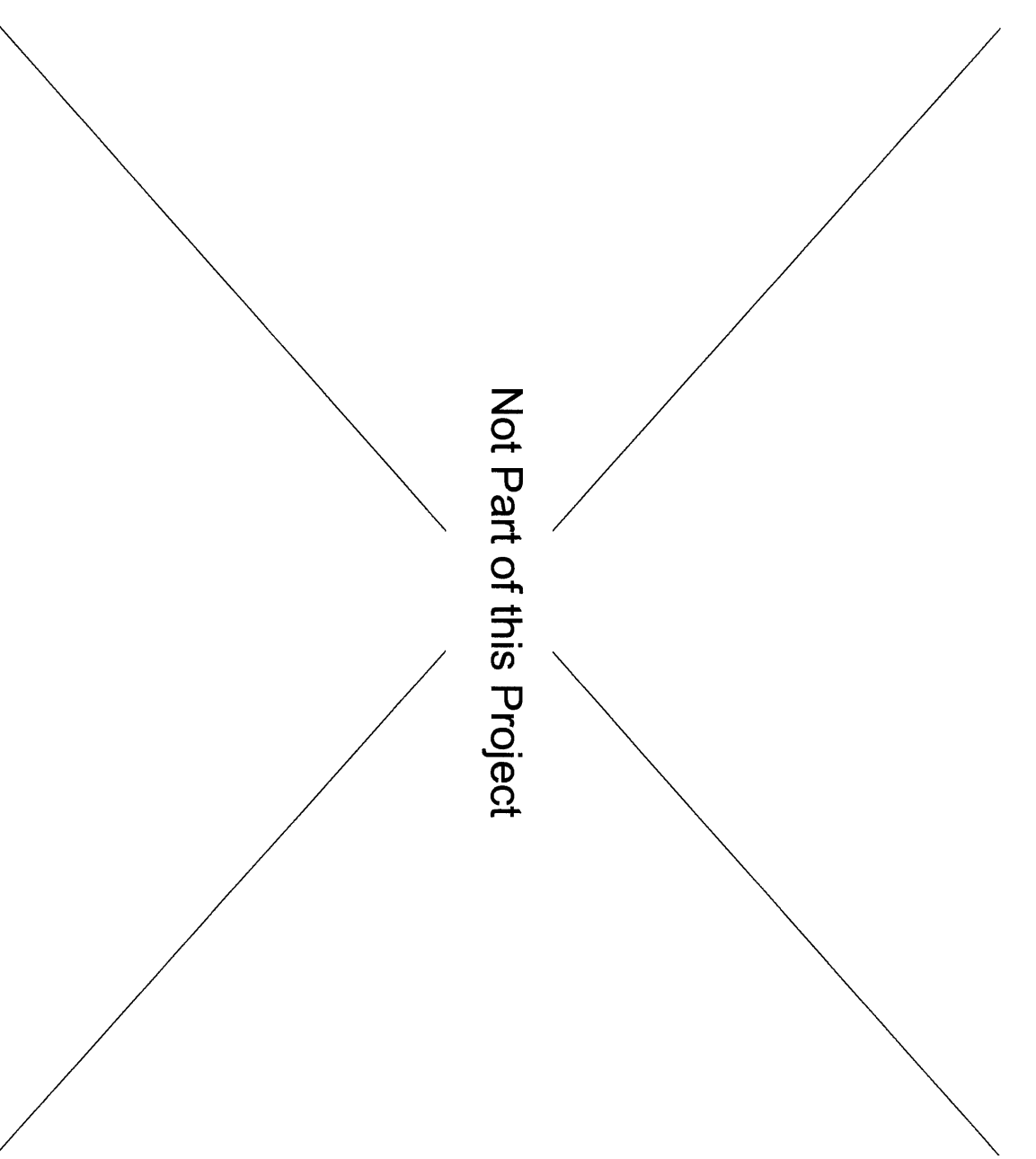
Sign Type F4

Graphic Notes

- A. 1 1/2" graphic bar (see Color Schedule) w/ 1" Frutiger 55 legend centered as shown.
- B. 3/4" on 1/2" Frutiger 55 legends, left justified as shown.
- C. 2" Frutiger 55 and 75 assembled legend, left justified as shown.
- D. 1" wide graphic border; see Color Schedule.
- E. 5" two-color pictogram, centered as shown; see Color Schedule.
- F. 1/2" on 1/4" Frutiger 55 legends, left justified as shown.
- G. 3/4" Frutiger 65 legends, layout as shown.
- H. 1/4" Frutiger 56 legends, layout as shown.
- I. 1 1/2" x 1 1/2" color square; see Color Schedule.
- J. 5" pictogram, centered as shown; see Message Schedule and Color Schedule.
- K. 3/4" Frutiger 55 legend, centered as shown.
- L. 1/4" Grade 2 braille, centered as shown.
- M. 1/4" Grade 2 braille, centered as shown.

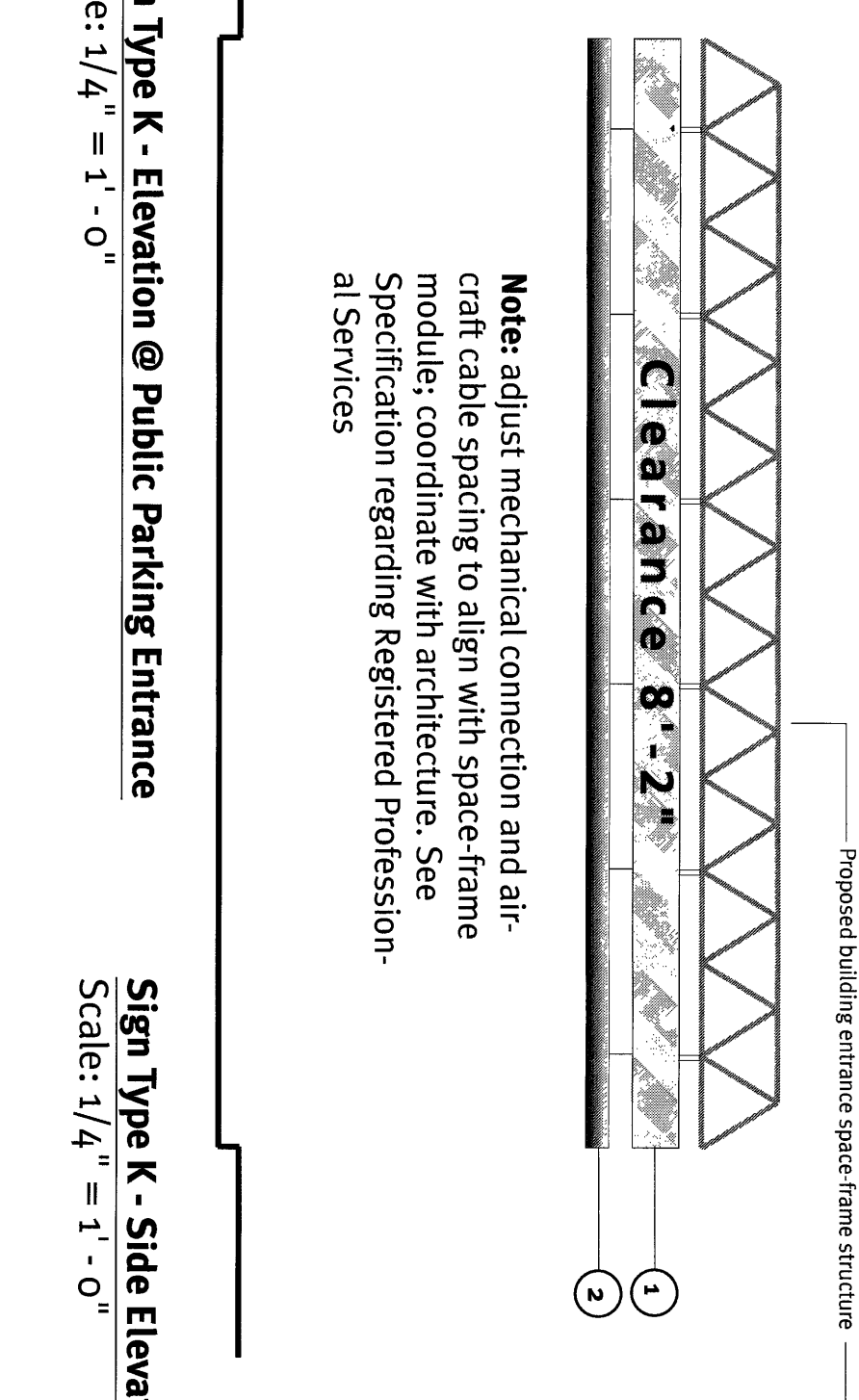
1 Type(s) F - Wall Mounted Identification Plaques

Scale: 3" = 1'-0"

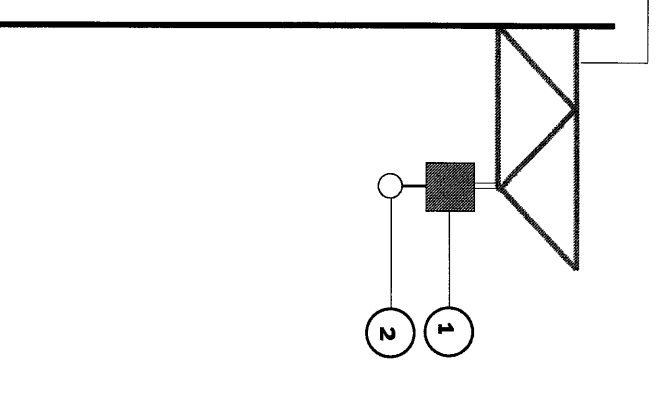


Sign Type G - Pay on Foot Graphic

Scale: noted



Sign Type K - Elevation @ Public Parking Entrance
Scale: 1/4" = 1'-0"

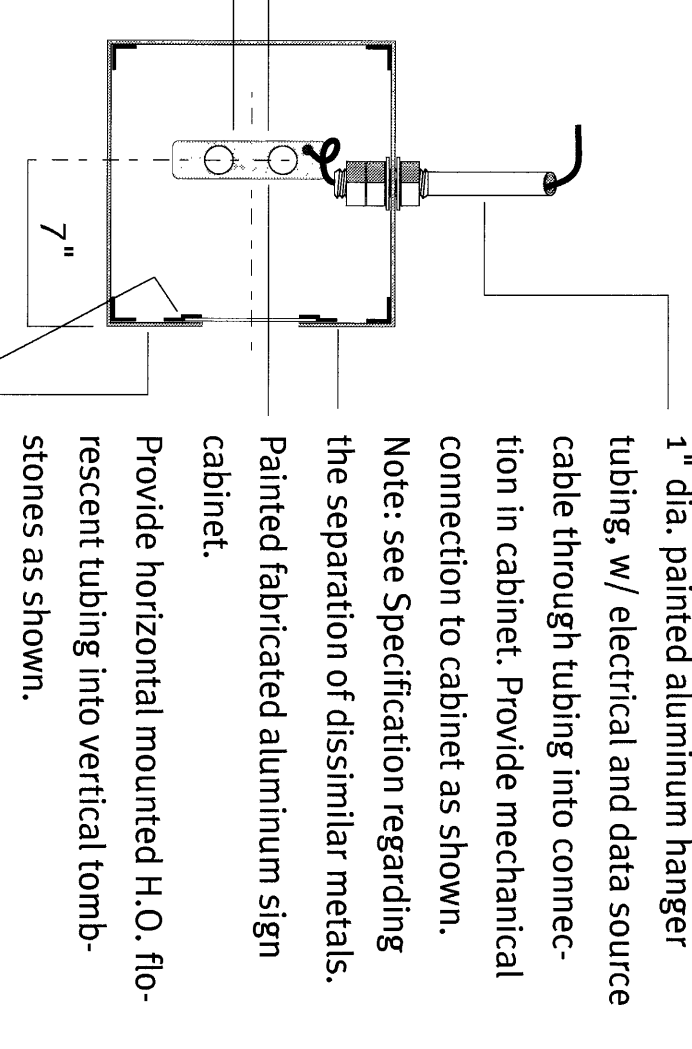


Sign Type K - Slide Elevation @ Public Parking Entrance
Scale: 1/4" = 1'-0"

General Notes

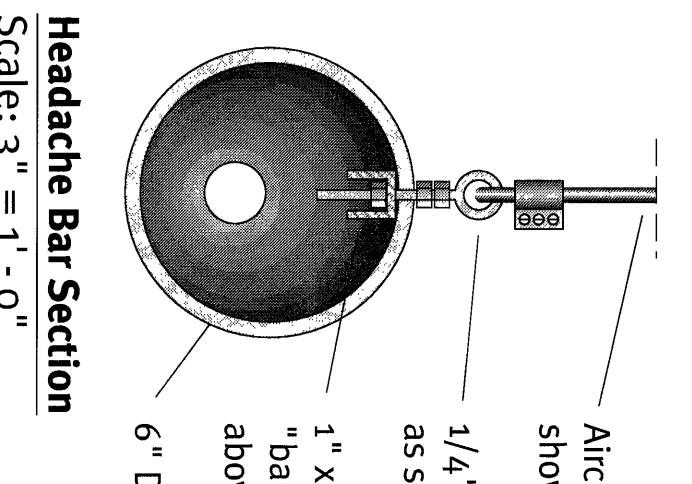
1. 12" x 12" x 24" - 0" Painted fabricated internally illuminated aluminum cabinet, with 8" Frutiger 65 waterjet cut legend as shown, with acrylic-plastic back-up. Provide reflective PSY "stripes" as shown; see Graphic Layout and Color Schedule. Mechanically attach (see Detail) to proposed building entrance space frame structure.
- Note: see Specification regarding the separation of dissimilar metals. Provide power source through adjacent to mechanical connection.
2. 6" dia x 24" - 0" assembled (joined with "male" sleeves) painted PVC "headache bar" provide 1" x 1" x .375" channel stiffener within tubing, eye connections through tubing and "aircraft cable" swag connection to illuminated cabinet. See Color Schedule.

Sign Type K Note: Modify Phase-1 sign located along the west facade and under the existing space frame so that the legend "Entrance" is on a new back-tilt white translucent panel, same size as original panel, with surface installed blue translucent PSY sheet and legend - correct typography and letter size to match existing. "Knocked out" to show the white legend. Assembled graphic panel to be "slid into" the existing sign cabinet and secured as originally specified.



- 1" dia. painted aluminum hanger tubing, w/ electrical and data source cable through tubing into connection in cabinet. Provide mechanical connection to cabinet as shown.
- Note: see Specification regarding the separation of dissimilar metals.
- Painted fabricated aluminum sign cabinet.
- Provide horizontal mounted H.O. fluorescent tubing into vertical tombstones as shown.
- Sign face...
- Waterjet cut legends and/or graphics; see elevation. Provide "Z-clip" continuously along top and bottom of 1/8" acrylic-plastic letter/graphic back-up.

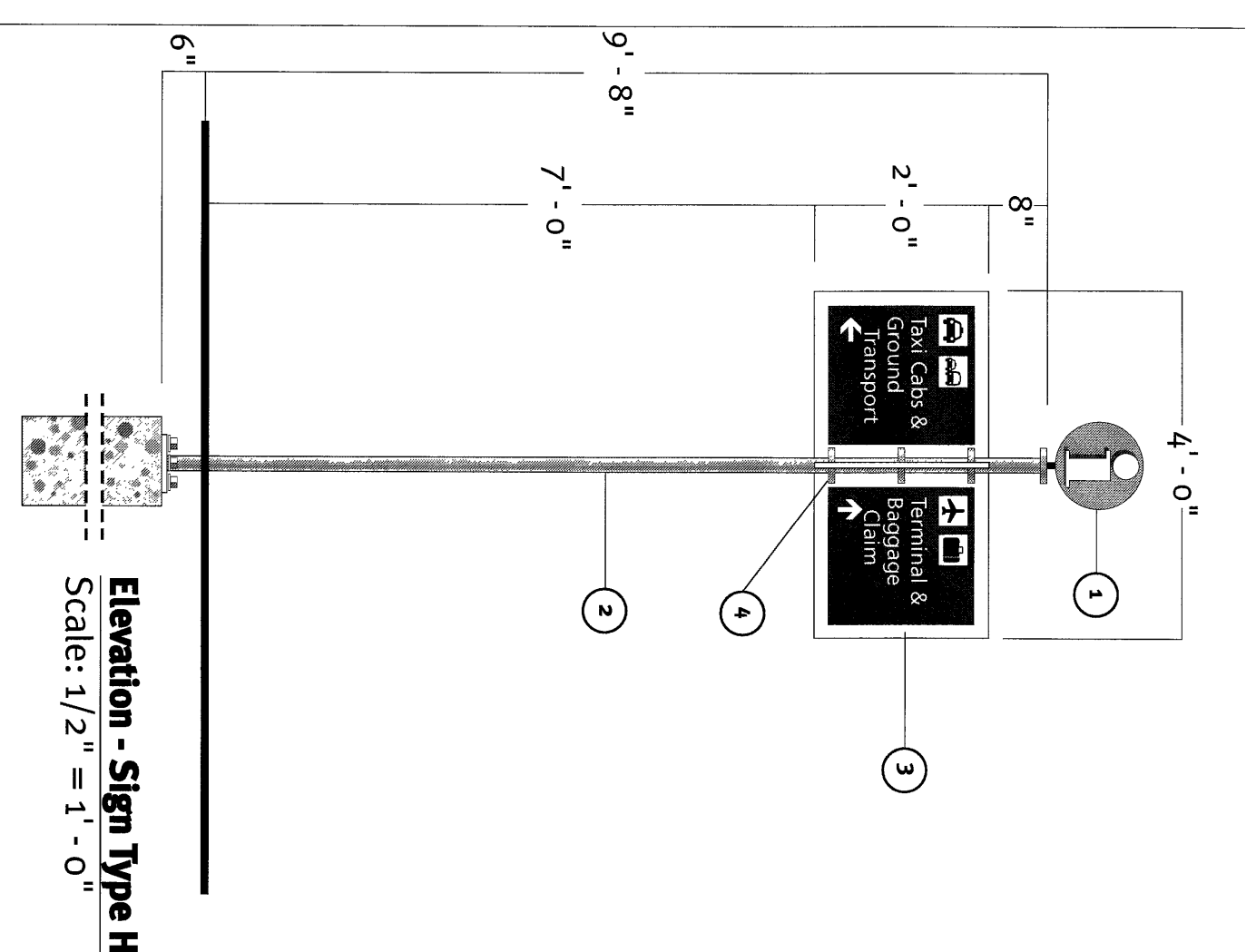
Section - Sign Type K
Scale: 1 1/2" = 1'-0"



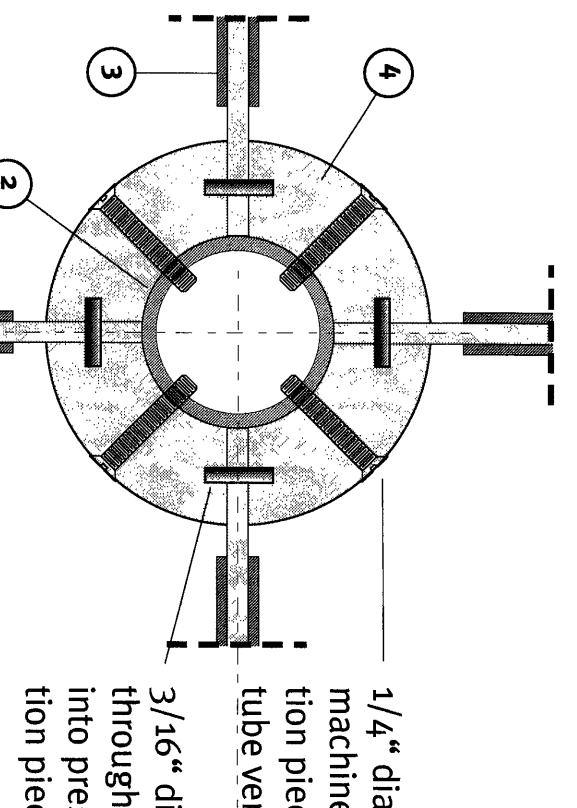
Headache Bar Section
Scale: 3" = 1'-0"

Sign Type K - Clearance / Headache Bar Sign at Short Term Entrance

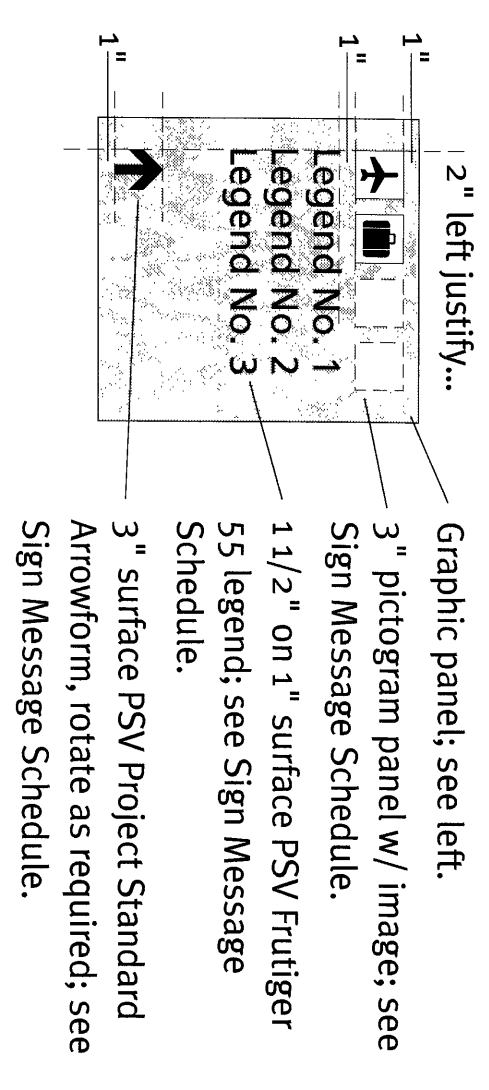
Scale: noted



Elevation - Sign Type H
Scale: 1/2" = 1'-0"



Sign Type H - Site Pedestrian Directional Sign
Scale: noted



Graphic Layout - Sign Type H
Scale: 1" = 1'-0"

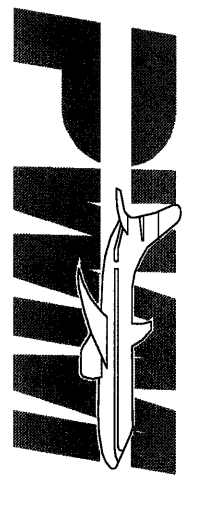
General Notes

1. 12" dia. x 2" painted fabricated aluminum "disk" cabinet, w/ 10" (vert dim) x 1/2" painted laser-cut aluminum sheet information pictogram. Lord's adhesive to face of cabinet (Typical both faces). Attach to vertical column w/ 1" x 1" x .125" painted square section aluminum tube, welded to disk cabinet interior and to internal column connection.
2. 2" dia. x 10" - 2" x .375" painted aluminum tube vertical, left into and welded to 8" dia. x .50" thick aluminum base-plate. Provide four (4) 5/8" dia. holes for four (4) 1/2" dia. "I-bolt" connection to concrete footing. Provide 4" dia. x 1" painted fabricated aluminum capitol, welded to tube top, w/ hole provided for connection tube.
3. 1" - 10" x 2" - 0" x .375" painted aluminum sign base-plate, w/ 1" - 7" x 1" - 8" x .125" painted aluminum sign face. Attach to sign base-plate w/ same-size VHB sheeting and Lord's Adhesive (Typical both faces, all panels indicated).
4. 90 degree x 2" radius x 2" thick aluminum connection piece (Typical 4 x 3 locations); see Section below for connection to sign and column.
5. Concrete footing; see Specifications regarding Registered Professional Services.

ISSUED FOR CONSTRUCTION

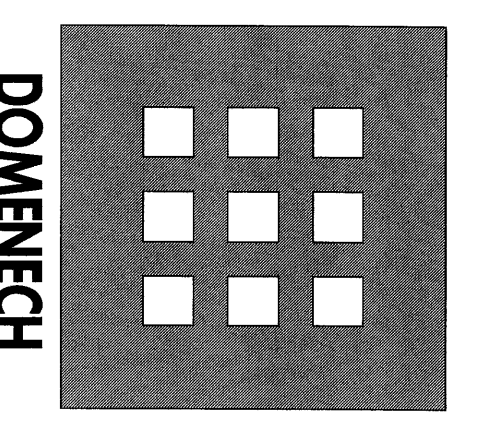
CITY OF PORTLAND PORTLAND, MAINE

DEPARTMENT OF WATERFRONT AND TRANSPORTATION



PORTLAND INTERNATIONAL JETPORT

PHASE II PARKING GARAGE 1001 WESTBROOK ST., PORTLAND, MAINE



HICKS & KROCKMALLIN ARCHITECTS

155 Massachusetts Ave. Boston, MA 02115
617-267-6408
Fax: 617-267-1990

Sign Architecture Details & Graphic Layouts

No.	Date	Revisions

Scale: 1" = 1'-0"

Drawn By: JAC
Checked By: JAC
Date: 08/26/08
Title: SG-1-2