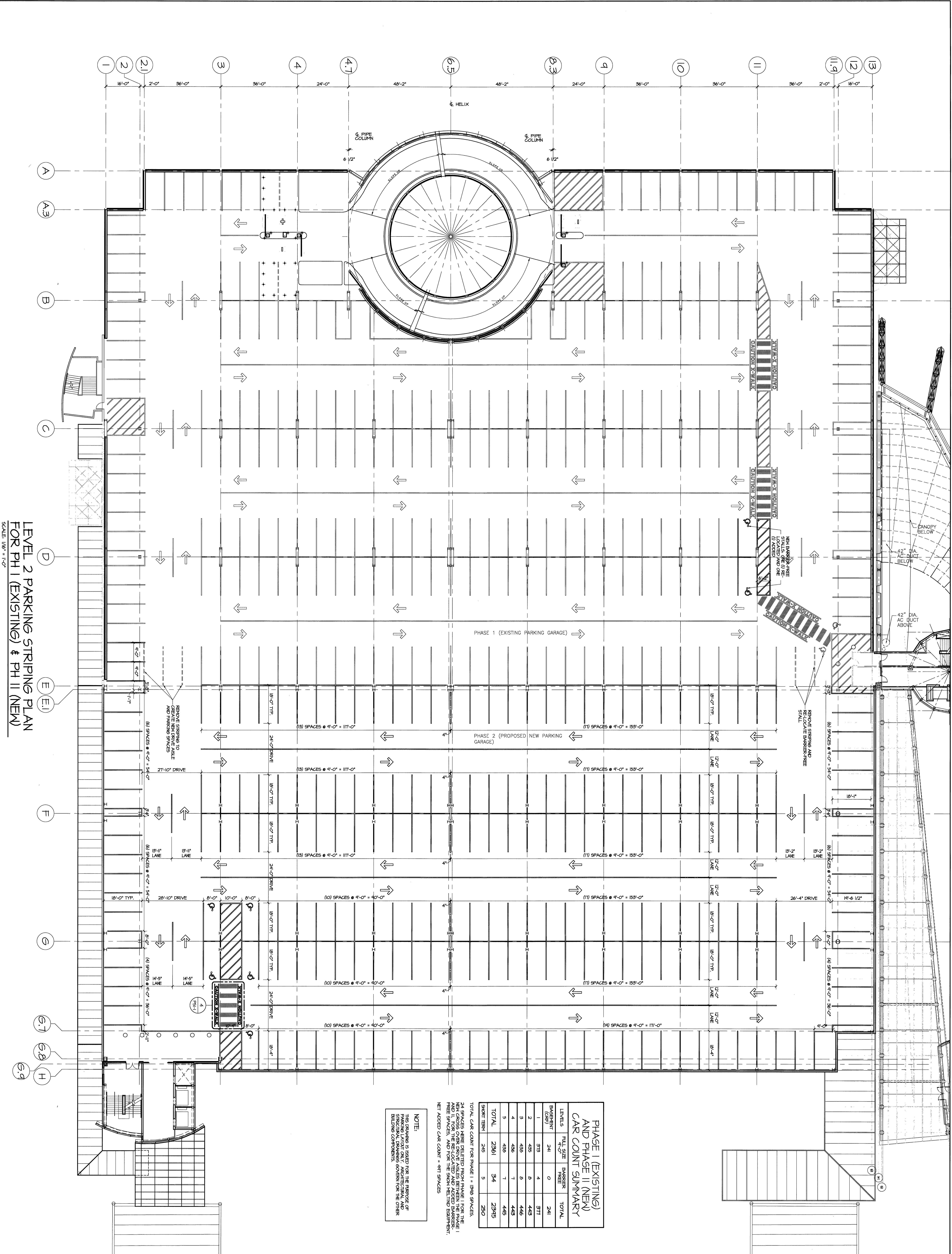


1/16"=1' 0 10 20 30 40ft 1/8"=1' 0 5 10 15 20ft 1/4"=1' 0 2 4 6 8 10ft 1/2"=1' 0 1 2 3 4 5ft 3/4"=1' 0 1 2 3ft 1"=1' 0 1 2 3ft 1 1/2"=1' 0 1 2ft 3"=1' 0 1ft



PHASE I (EXISTING) AND PHASE II (NEW) CAR COUNT SUMMARY

FULL SIZE PARKING SPACES	BASIS	TOTAL
LEVELS		
BASINENT (G/P)	241	241
1	313	317
2	435	443
3	436	446
4	436	445
5	439	445
TOTAL	2361	2345
SHORT TERM	245	250
TOTAL CAR COUNT FOR PHASE I = 1898 SPACES.		

24 SPACES VEHICLE SERVICE BAY SPACES IN THE NEAR CROSS OVER DRIVEWAY ARE BETWEEN PHASE I AND II. FOR THE RELOCATED AND ADDED BARRIER AND SPACES, AND FOR THE SIGN TYPING EXPENSE, NET ADDED CAR COUNT = 897 SPACES

NOTE:
THIS DRAWING IS ISSUED FOR THE PURPOSE OF PROVIDING INFORMATION TO THE ARCHITECT AND ENGINEER FOR THE STRUCTURAL DRAWINGS GOVERN FOR THE OTHER BUILDING COMPONENTS.

LEVEL 2 PARKING STRIPING PLAN FOR PH I (EXISTING) & PH II (NEW)
SCALE: 1/16" = 1'-0"

If this sheet is less than 30"x42" in size, it has been reduced. In size, it also must be adjusted accordingly.

DOMENECH HICKS & KROCKMALLIN ARCHITECTS
155 Massachusetts Ave.
Boston, MA 02115
617-267-6408
Fax 617-267-1990

Parking Consultants RICH Planners & Associates
21800 West 10th Mile, Suite 200
Westminster, Colorado 80031
Tel: 303.426.5330
Fax: 303.426.5350
Tel: 617.559.9800
www.RichAssociates.com

ISSUED FOR CONSTRUCTION
CITY OF PORTLAND
PORTLAND, MAINE
DEPARTMENT OF WATERFRONT AND TRANSPORTATION
PORTLAND INTERNATIONAL JETPORT
PHASE II
PARKING GARAGE
1001 WESTBROOK ST.,
PORTLAND, MAINE

PS-2-2
11/16/07
Checked by: WMS/WMS
Date: 11/16/07
Drawing No.: 111807
Scale: 1/16" = 1'-0"
111807