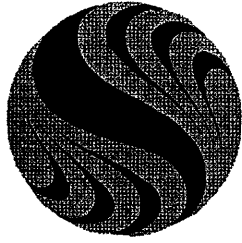


**DOMENECH
HICKS &
KROCKMALNIC
ARCHITECTS**
155 Massachusetts Ave.
Boston, MA 02115
617-467-6408
Fax 617-267-1880



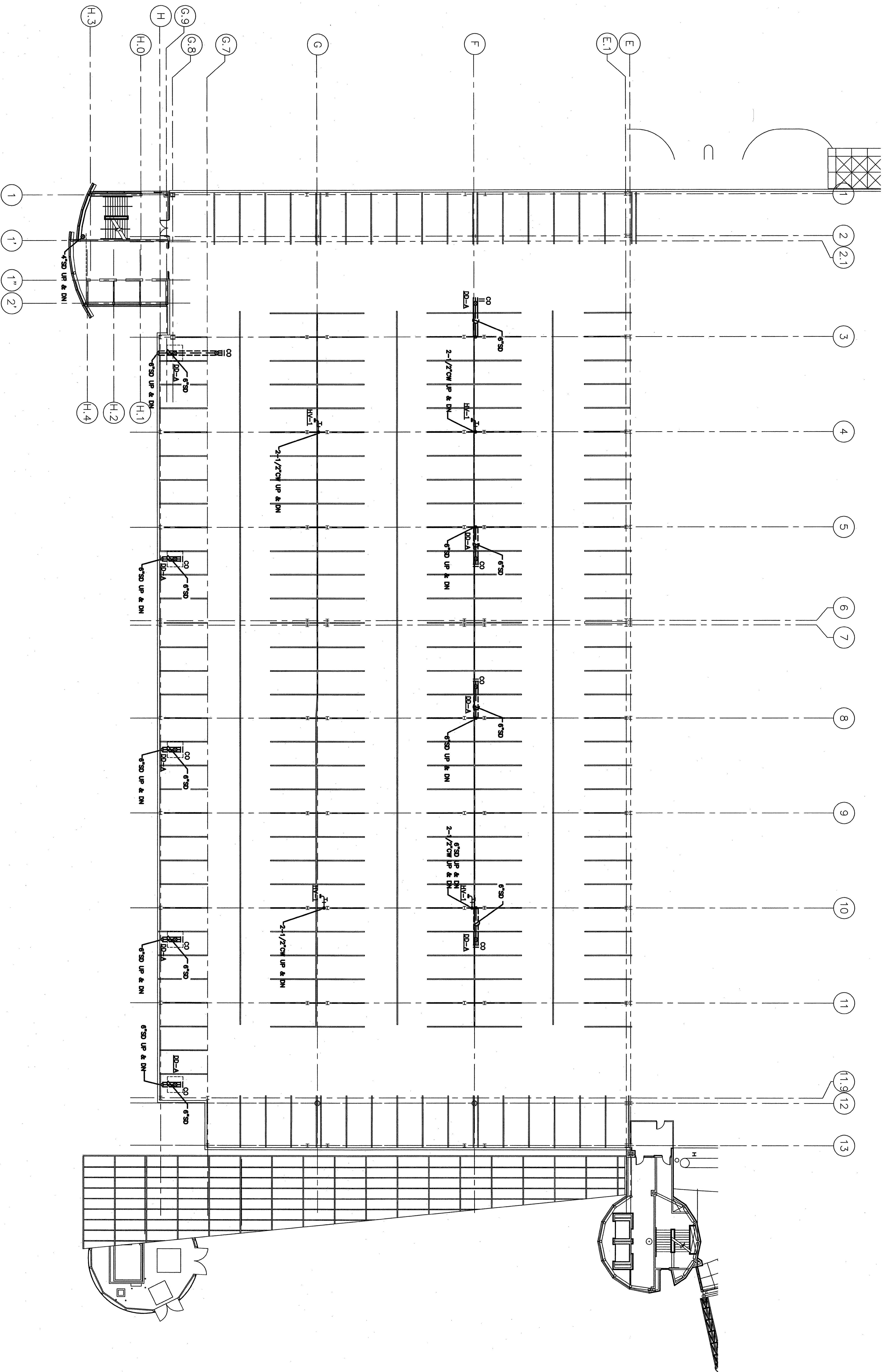
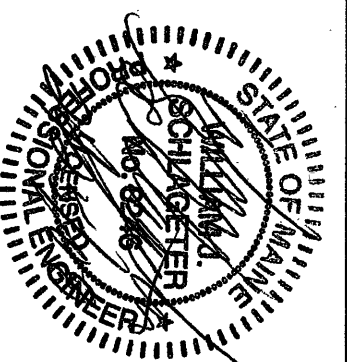
Stantec
Stantec Consulting Services Inc.
22 Pine Street, Suite 205
Portland, ME U.S.A.
04101-3900
Tel. 207/775-3211
Fax. 207/775-6434
www.stantec.com

CONFORMED SET
FOR FIELD USE



CITY OF PORTLAND
PORTLAND, MAINE
DEPARTMENT OF
WATERFRONT AND
TRANSPORTATION
PORTLAND INTERNATIONAL
JETPORT
PHASE II
PARKING GARAGE
1001 WESTBROOK ST.,
PORTLAND, MAINE

LEVEL - 2, 3 & 4
PLUMBING PLAN



PLUMBING PLAN - LEVEL 2
(TYPICAL FOR SECOND, THIRD AND FOURTH LEVELS)
SCALE: 1/16"=1'-0"

NOTES:
1. PROVIDE PIPE SLEEVES FOR DOMESTIC WATER PIPING AND STORM DRAINAGE PIPING IN GARAGE PENETRATING PRECAST CONCRETE DECK. SEAL SPACE BETWEEN PIPE AND DECK WITH THE RATED SOLVENT. WATER SOLVENT UP PIPE ABOVE GARAGE DECK TO SHED WATER.
2. RUN HORIZONTAL PIPING AS HIGH AS POSSIBLE BETWEEN STRUCTURAL TEES AND AS CLOSE TO OUTSIDE WALL ON COLUMN LINE H AS POSSIBLE. RUN VERTICAL STORM LEADERS AS CLOSE TO COLUMNS AS POSSIBLE.