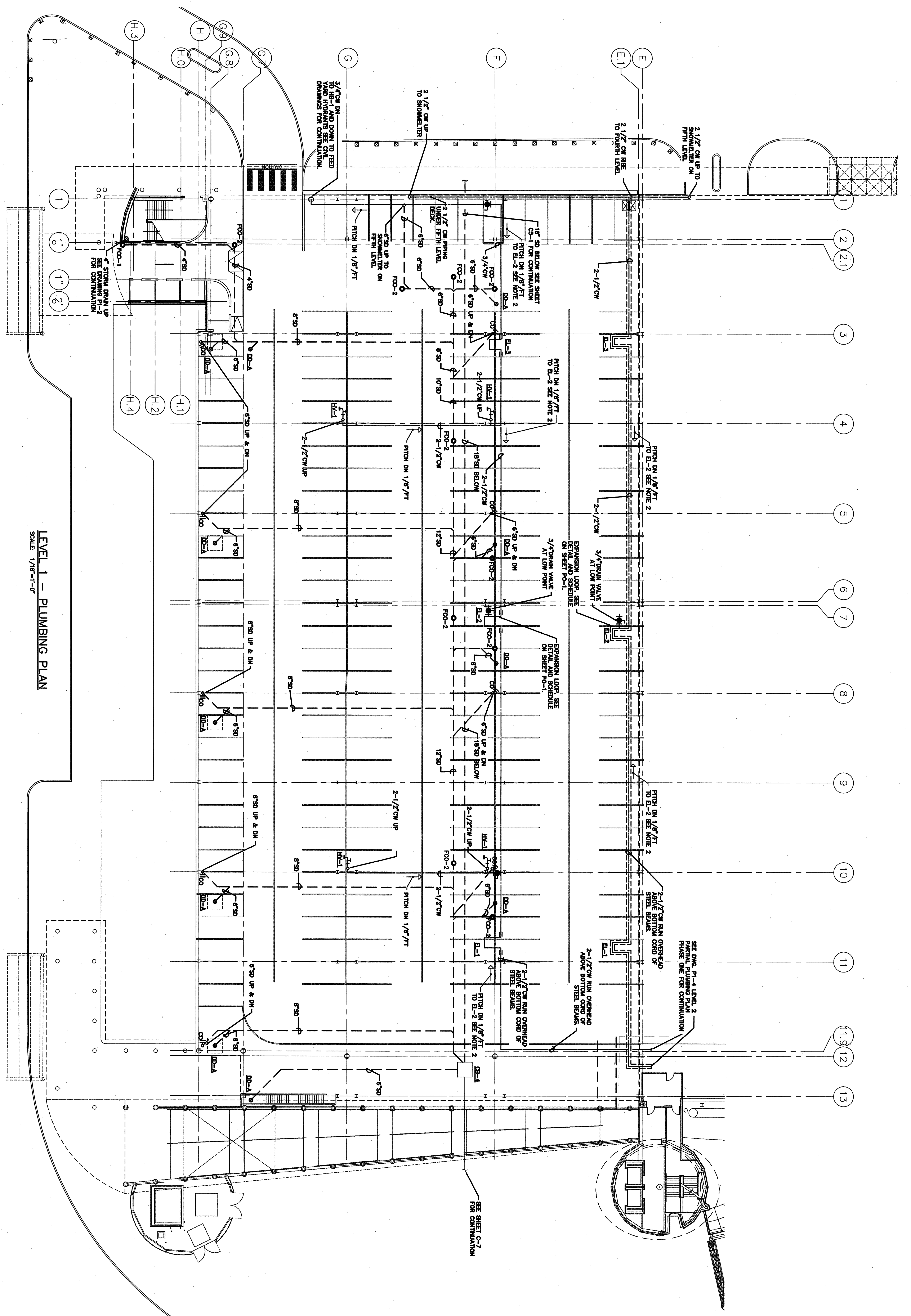


1/16"=1' 5 0 10 20 30 40ft 1/8"=1' 5 0 5 10 15 20ft 1/4"=1' 2 0 2 4 6 8 10ft 1/2"=1' 0 1 2 3 4 5ft 3/4"=1' 0 1 2 3ft 1"=1' 0 1 2 3ft 1 1/2"=1' 0 1 2ft 2ft 3"=1' 0 1ft



LEVEL 1 - PLUMBING PLAN  
SCALE: 1/16"=1'-0"

- NOTES:**
1. PROVIDE PIPE SLEEVES FOR DOMESTIC WATER PIPING AND STORM DRAINAGE PIPING IN GRADE PENETRATING PRECAST CONCRETE DECK. SEAL SPACE BETWEEN PIPE AND SPOD WATER.
  2. INSTALL 2 1/2" CW MAIN AND EXPANSION LOOPS EL-2 OVERHEAD ABOVE BOTTOM CHORD OF STEEL BEAMS. PITCH DN AT 1/8" PER FOOT TO LOW POINT AT EXPANSION LOOP EL-2.
  3. ONLY WATER LINE FOR SNOWMELTER IS INSULATED & HEAT TRACED IN EXPOSED AREAS.
  4. RAIN HORIZONTAL PIPING AS HIGH AS POSSIBLE BETWEEN STRUCTURAL TEES AND AS CLOSE TO OUTSIDE WALL ON COLUMN LINE H AS POSSIBLE. RAIN VERTICAL STORM LEADERS AS CLOSE TO COLUMNS AS POSSIBLE.

If this sheet is less than 30"x42" in size, it must be enlarged according to the scale shown.

**DOMENECH HICKS & KROCKMALNIC ARCHITECTS**  
155 Massachusetts Ave.  
Boston, MA 02115  
617-267-4408  
Fax 617-267-1990

**Stantec**  
Stantec Consulting Services Inc.  
200 Water Street  
Portland, ME USA  
04101-3900  
Tel. 207.775.3211  
Fax. 207.775.6434  
www.stantec.com

CONFORMED SET  
FOR FIELD USE

CITY OF PORTLAND  
PORTLAND, MAINE  
DEPARTMENT OF  
WATERFRONT AND  
TRANSPORTATION



PORTLAND  
INTERNATIONAL  
JETPORT

PHASE II  
PARKING GARAGE  
1001 WESTBROOK ST.,  
PORTLAND, MAINE

LEVEL 1  
PLUMBING PLAN

AS SHOWN

No.	Date	Revision

Checked by: JES  
Date: 10/27/2010  
Drawing No.: 021508

**P1-1**