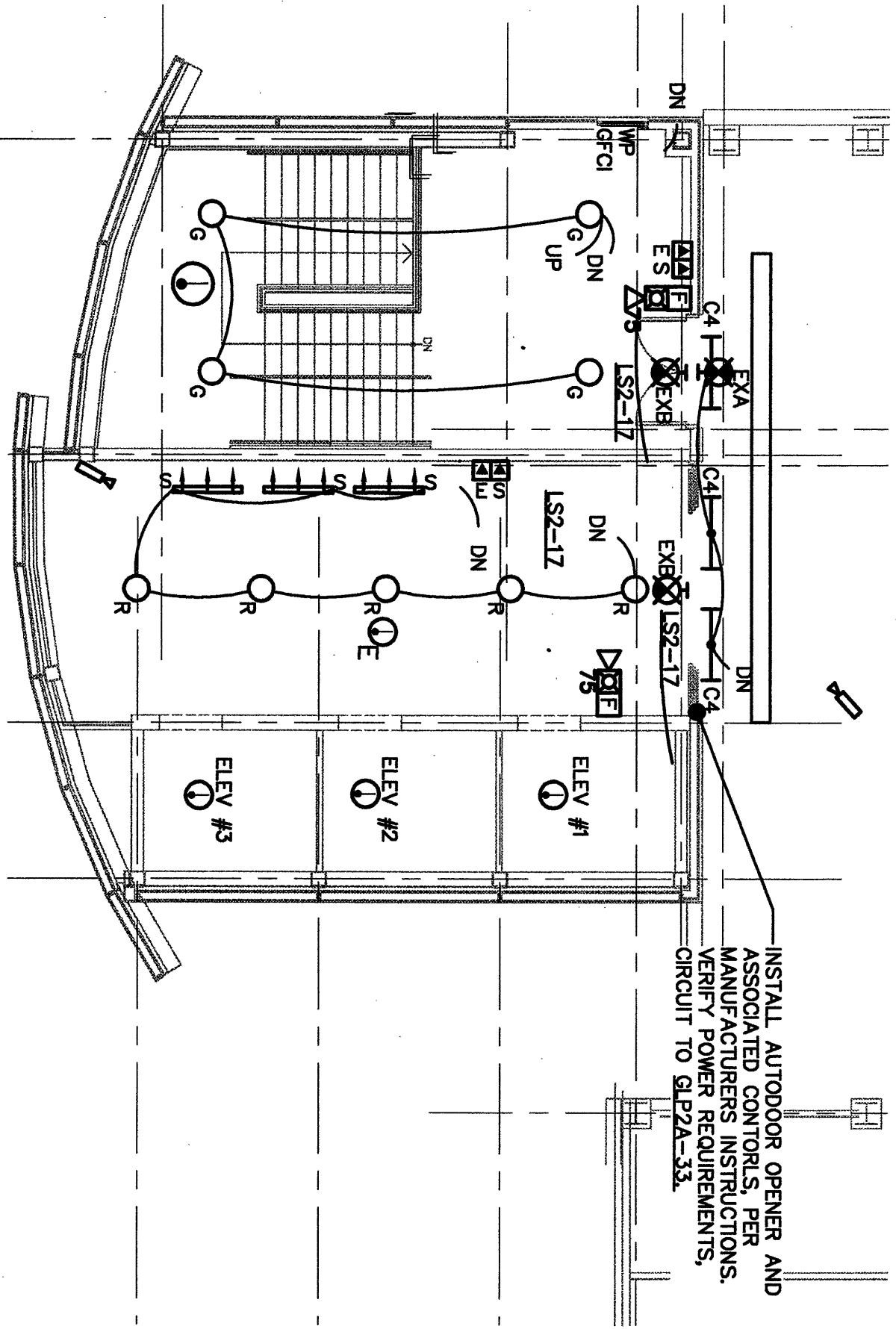


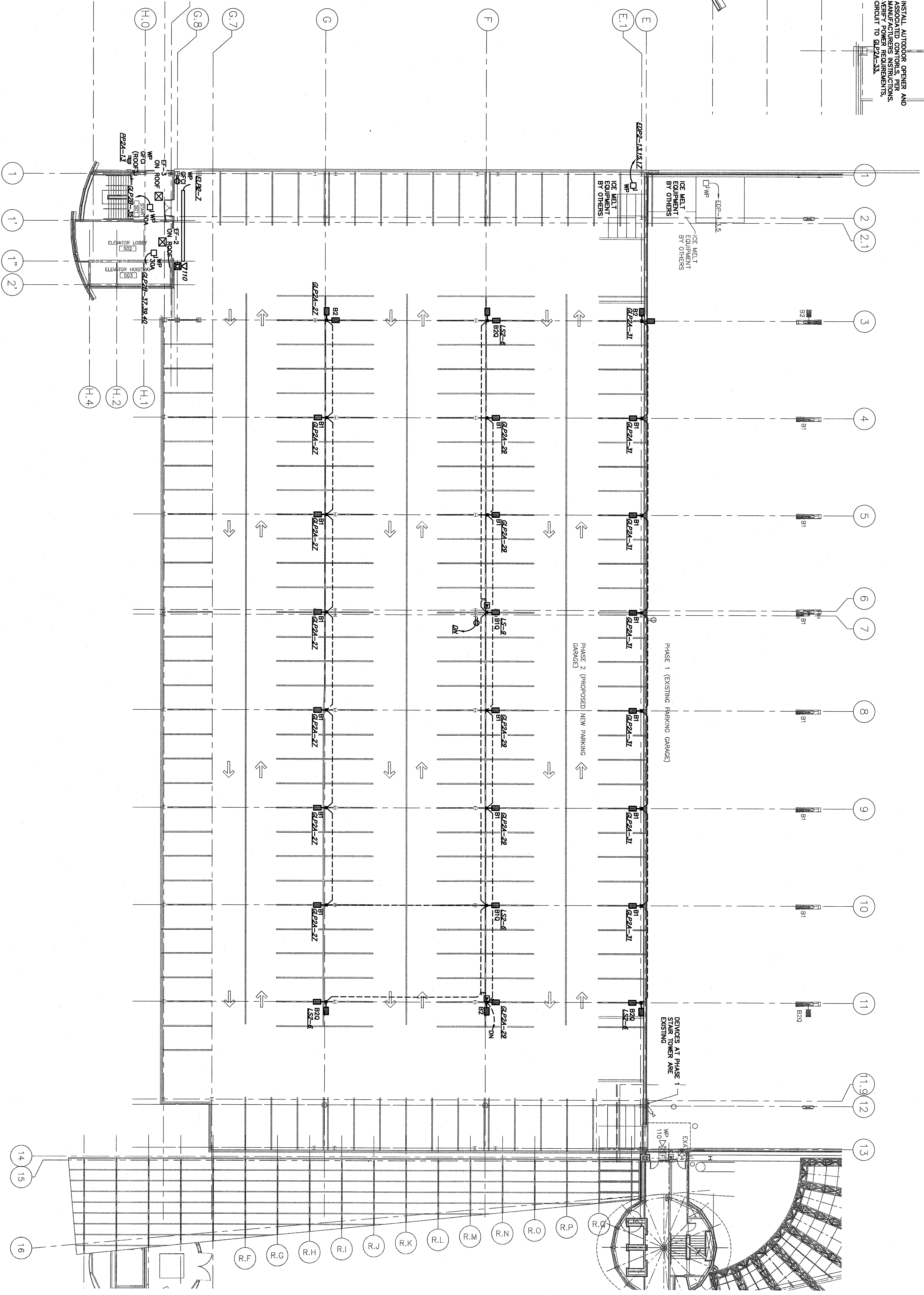
1/16"=1' 5 0 10 20 30 40ft 1/8"=1' 5 0 5 10 15 20ft 1/4"=1' 2 0 2 4 6 8 10ft 1/2"=1' 0 1 2 3 4 5ft 3/4"=1' 0 1 2 3ft 1"=1' 0 1 2 3ft 1 1/2"=1' 0 1 2ft 3"=1' 0 1ft



ENLARGED ELEVATOR - LEVEL 5 LIGHTING, POWER AND SPECIAL SYSTEMS PLAN
SCALE: 1/8"=1'-0"

SNOW/ICE MELTING EQUIPMENT

1. THE 40 & 60-SE SNOWMELTERS) WITH STEEL MELTING TANK SHALL BE INSTALLED BY OTHERS, COORDINATE WITH GC FOR THE ELECTRICAL HEATER, CO MONITORING EQUIPMENT, AND ELECTRIC HOST.
2. INSTALLATION SHALL BE PER MANUFACTURER'S INSTRUCTIONS.
3. THE MANUFACTURER SHALL PROVIDE, PER ESTIMATED LENGTHS OF LIQUID TIGHT CONDUIT AND WIRES THAT ARE INCLUDED. CABLES ARE SHIPPED IN COILS, LABELED AND ONE END IS QUANTITIES WITH MANUFACTURER, ELECTRICAL CONTRACTOR SHALL ROUTE CABLES, CUT TO FINAL LENGTH AND TERMINATE RIGID CONDUIT THIS TO BE PROVIDED BY THE ELECTRICAL SUBCONTRACTOR.
4. PROVIDE A WEATHER-PROOF 100A FUSED DISCONNECT WIRE TO THE CONTROL PANEL.
5. PROVIDE FIELD WIRING AND CONDUIT FOR AN ELECTRIC HEATER THAT IS MOUNTED IN THE SIDE OF THE TANK. MANUFACTURER IS TO PROVIDE MOUNTING BRACKETS FOR CONDUIT/TRAY ON THE TANK.
6. PROVIDE FIELD WIRING AND CONDUIT FOR THE CO MONITORING EQUIPMENT.
7. THE TANK COVER COMES WITH AN ELECTRIC CHAIN HOIST WHICH IS MOUNTED TO THE HOIST. THE CONDUIT WIRING SHALL BE COORDINATED TO THE HOIST. PROVIDE RIGID (RGS) CONDUIT AND WIRING BETWEEN THE MAIN AND AUXILIARY PANEL AND COMPRESSOR. THE ELECTRICAL CONTRACTOR SHALL VERIFY THE ELECTRICAL HOIST WILL BE SUPPORTED FROM THE HOIST CARRIER.

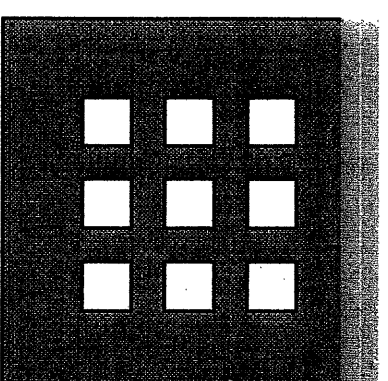


LEVEL 5 LIGHTING, POWER AND SPECIAL SYSTEMS PLAN
SCALE: 1/16"=1'-0"

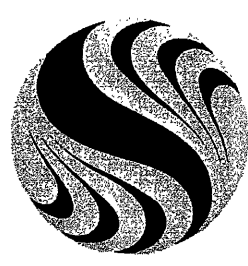
NOTES:

1. ALL EXPOSED CONDUIT IN GARAGE SHALL BE TYPE RGS (3/4" MINIMUM SIZE FOR POWER CIRCUITS) CONDUIT STRAPS SHALL BE CAST TYPE. ALL OUTLET BOXES SHALL BE HEAVY DUTY WEATHER PROOF CAST TYPE.
2. CONDUIT ROUTES ARE SHOWN FOR COORDINATION PURPOSES NOT ALL CONDUITS TO SERVE ALL SYSTEMS ARE SHOWN. ALTERNATE CONDUIT ROUTES MAY BE REQUIRED.
3. STRUCTURAL TEES HAVE 3"x6" PRECAST SLOTS. SEE STRUCTURAL DRAWINGS.
4. IT IS THE INTENT THAT CONDUIT SHALL BE RUN ON OR CLOSE TO CONCRETE OR BEAM SURFACES.
5. HEAT TRAP FEEDS SHALL BE LOCATED AT CEILING OF LATER SNOW. POWER FEEDS TO HEAT TRACE CABLE (FURNISHED BY DW. 19) SHALL BE INSTALLED BY SW. 19. SW. 19 SHALL VERIFY AND INSTALL HEAT TRACE SLEAVE.

If the sheet is less than 30"x42" in size, it has been reduced. Graphic accordingly.



**DOMENECH
HICKS &
KROCKMANN
ARCHITECTS**
155 Massachusetts Ave.
Boston, MA 02115
617-267-6408
Fax 617-267-1990



Stantec
Stantec Consulting Services Inc.
22 Free Street, Suite 205
Portland, ME U.S.A.
04101-3900
Tel. 207-775-3211
Fax 207-775-3434
www.stantec.com

CONFORMED SET
FOR FIELD USE

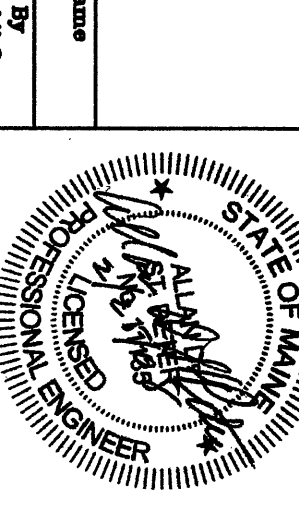


**PORTLAND
INTERNATIONAL
JETPORT**

PHASE II
PARKING GARAGE
1001 WESTBROOK ST.,
PORTLAND, MAINE

LEVEL 5
ELECTRICAL PLAN

DATE: 02/25/08



E1-5