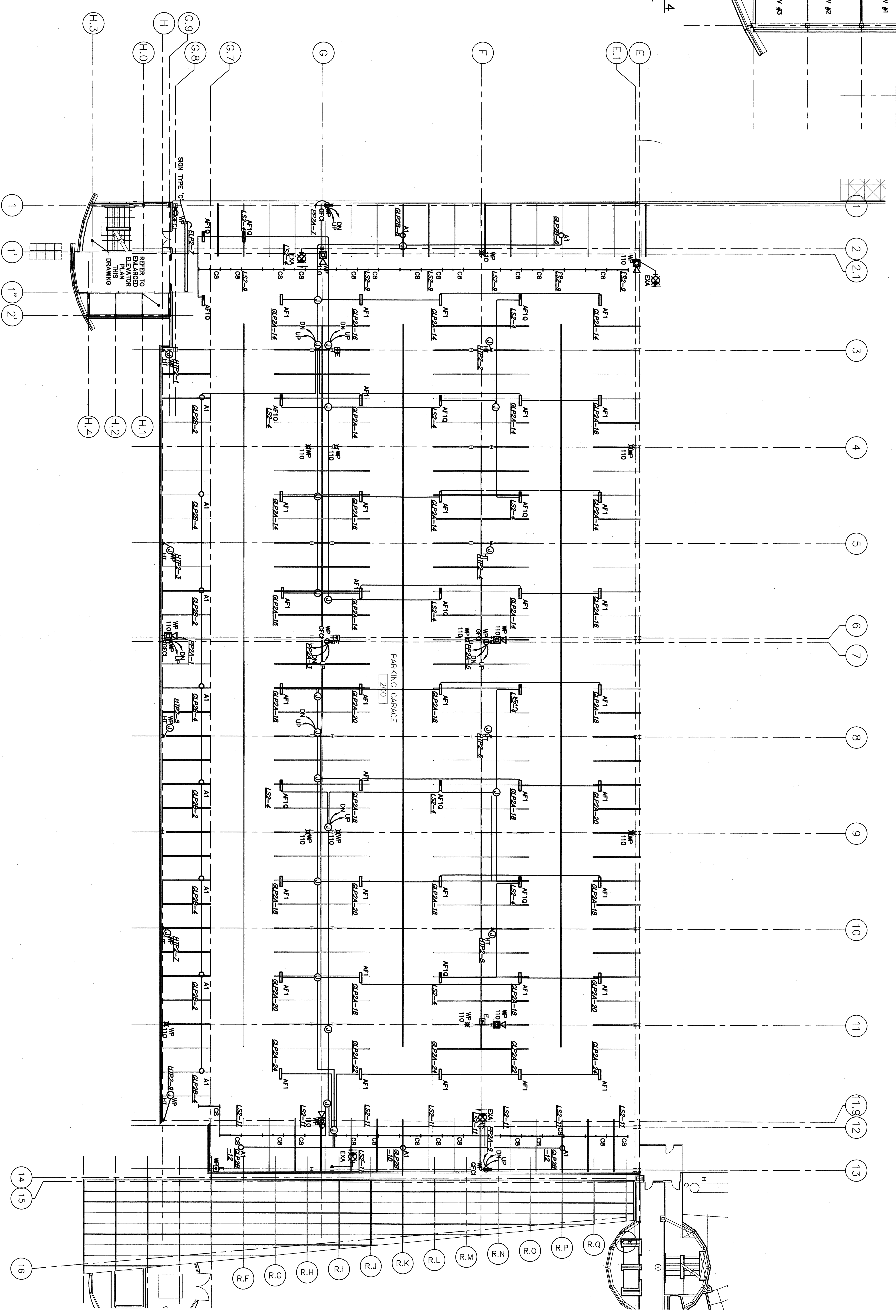


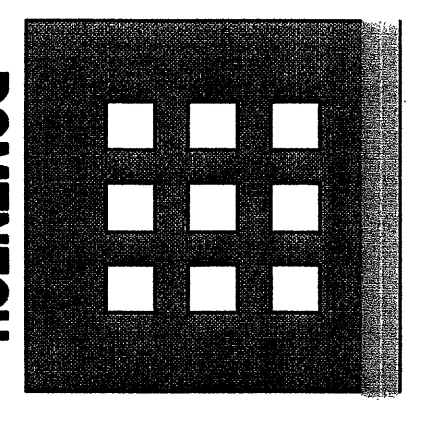
ENLARGED ELEVATOR - LEVEL 4  
LIGHTING, POWER AND SPECIAL  
SYSTEMS PLAN  
SCALE: 1/8"=1'-0"



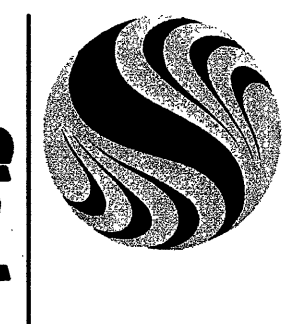
TYPICAL LEVEL 4 LIGHTING, POWER AND SPECIAL SYSTEMS PLAN  
SCALE: 1/8"=1'-0"

- NOTES:
1. ALL POWER CONDUIT IN GARAGE SHALL BE TYPE RGS (S/LT) UNLESS SEE FOR POWER CIRCUITS) CONDUIT STRAPS SHALL BE CAST TYPE. ALL OUTLET BOXES SHALL BE HEAVY DUTY WEATHER-PROOF CAST TYPE.
  2. CONDUIT ROUTES ARE SHOWN FOR COORDINATION PURPOSES NOT ALL CONDUITS TO SERVE ALL SYSTEMS ARE SHOWN. ALTERNATE CONDUIT ROUTES MAY BE PROPOSED.
  3. STRUCTURAL TEES HAVE 3"x6" PRECAST SLOTS. SEE STRUCTURAL DRAWINGS.
  4. IT IS THE INTENT THAT CONDUIT SHALL BE RUN ON OR CLOSE TO CONCRETE OR BEAM SURFACES.
  5. HEAT TREAT FEES SHALL BE LOCATED AT CEILING OF L&B ROOM. POWER FEES TO HEAT TRACE CABLE (FURNISHED BY DIV. 15) SHALL BE INSTALLED BY DIV. 16. DIV. 16 SHALL FURNISH AND INSTALL HEAT TRACE CABLE.
  6. CONDUIT AND JUNCTION BOXES WITH VERTICAL RISERS SHALL BE SEALED TO PREVENT WATER ENTRY.
  7. JUNCTION BOXES WITH VERTICAL RISER SHALL HAVE A COMBINATION BREAKER-DRAIN LOCATED IN BOTTOM OF JUNCTION BOX.

If this sheet is less than 30"x42" in size, it must be adjusted. Graphic scales must be adjusted accordingly.



**DOMENECH  
HICKS &  
KROCKMANN  
ARCHITECTS**  
155 Massachusetts Ave.  
Boston, MA 02115  
617-267-6408  
Fax 617-267-1990



**Stantec**  
Stantec Consulting Services Inc.  
22 Free Street, Suite 205  
Portland, ME USA  
04101-3900 3211  
Tel: 207/775-2311  
Fax: 207/775-2314  
www.stantec.com

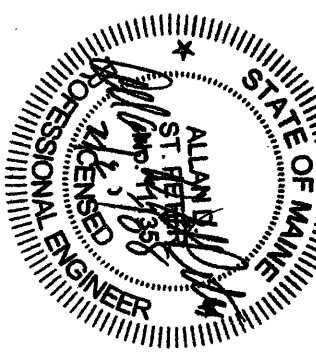
CONFORMED SET  
FOR FIELD USE

CITY OF PORTLAND  
PORTLAND, MAINE  
DEPARTMENT OF  
WATERFRONT AND  
TRANSPORTATION



PORTLAND  
INTERNATIONAL  
JETPORT  
PHASE II  
PARKING GARAGE  
1001 WESTBROOK ST.,  
PORTLAND, MAINE

LEVEL 4  
ELECTRICAL PLAN



E1-4