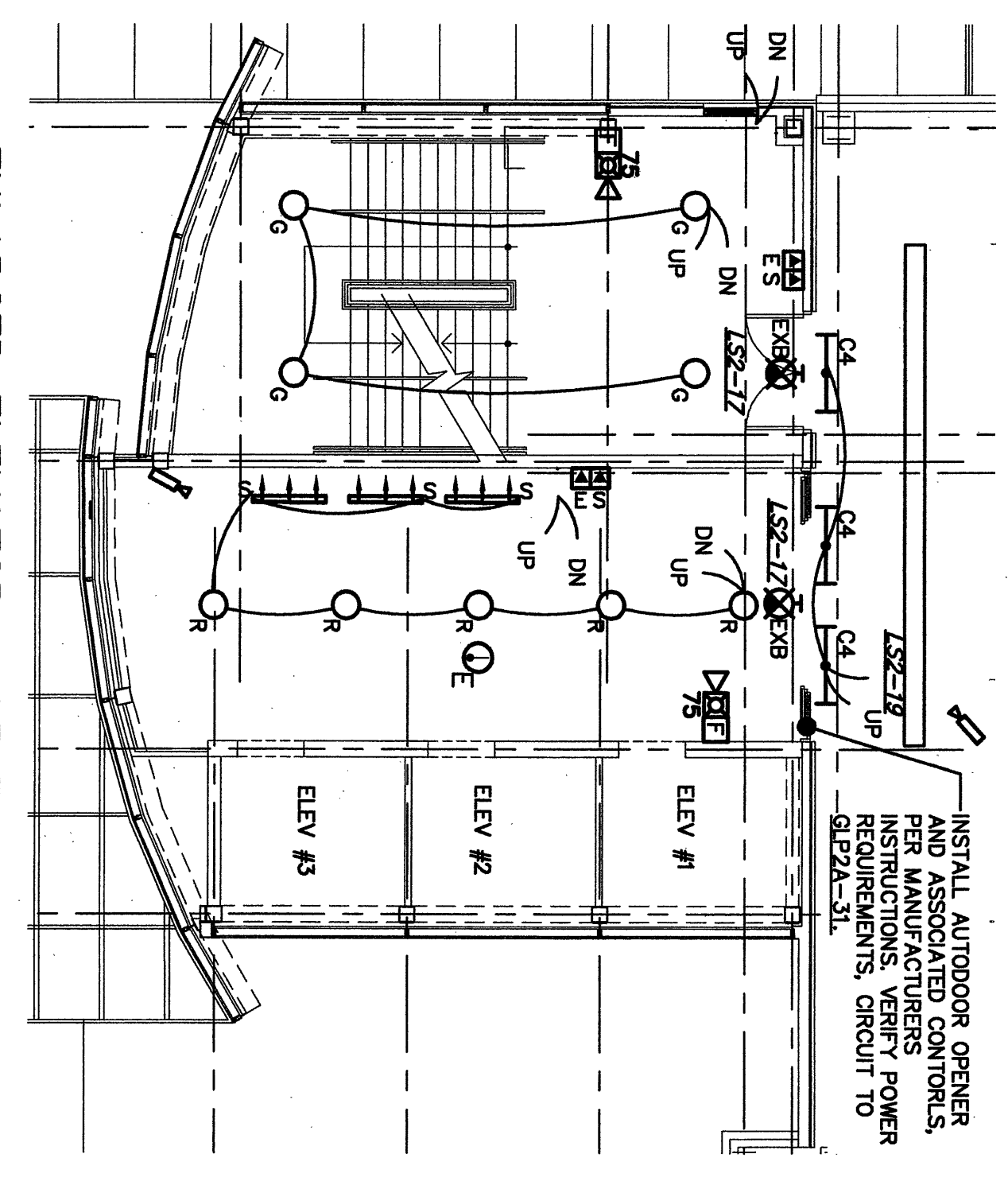
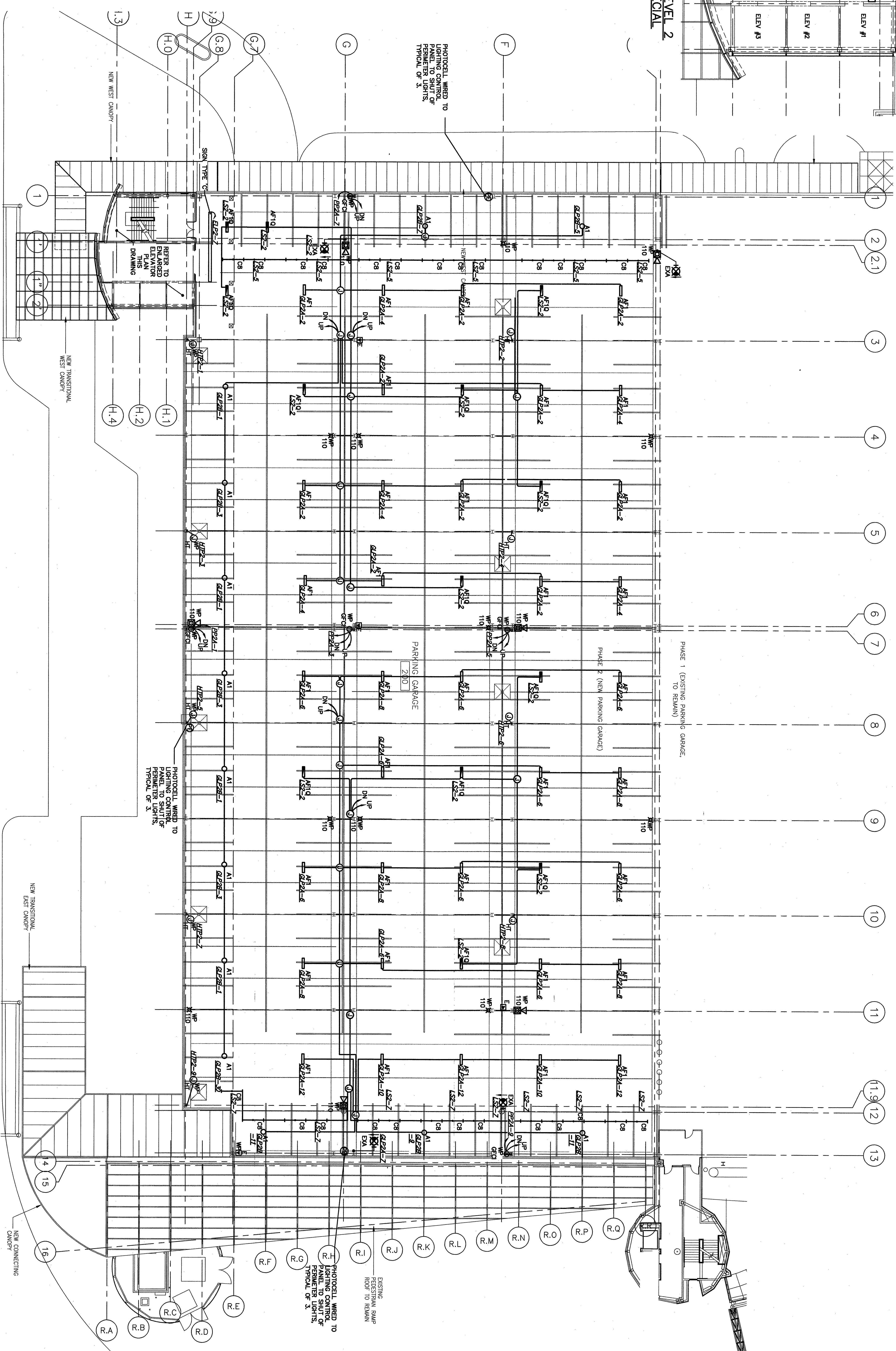


1/8"=1'-0" 5 0 10 20 30 40ft 1/8"=1'-0" 5 0 5 10 15 20ft 1/4"=1'-0" 2 0 2 4 6 8 10ft 1/2"=1'-0" 0 1 2 3 4 5ft 3/4"=1'-0" 0 1 2 3ft 1"=1'-0" 0 1 2ft 1 1/2"=1'-0" 0 1 2ft 3"=1'-0" 0 1ft



ENLARGED ELEVATOR - LEVEL 2  
LIGHTING, POWER AND SPECIAL  
SYSTEMS PLAN  
SCALE: 1/8"=1'-0"



LEVEL 2 LIGHTING, POWER AND SPECIAL SYSTEMS PLAN  
SCALE: 1/8"=1'-0"

NOTES:  
1. ALL EXPOSED CONDUIT IN GARAGE SHALL BE TYPE RGS (1/4" MINIMUM SIZE FOR POWER CIRCUITS) CONDUIT STRAPS SHALL BE CAST TYPE. ALL OUTLET BOXES SHALL BE HEAVY DUTY WEATHER-PROOF CAST TYPE.  
2. CONDUIT ROUTES ARE SHOWN FOR COORDINATION PURPOSES NOT ALL CONDUITS TO SERVE ALL SYSTEMS ARE SHOWN. ALTERNATE CONDUIT ROUTES MAY BE PROPOSED.  
3. STRUCTURAL TEES HAVE 3"x8" PRECAST SLOTS. SEE STRUCTURAL DRAWINGS.  
4. IT IS THE INTENT THAT CONDUIT SHALL BE RUN ON OR CLOSE TO CONCRETE OR BEAM SURFACES.  
5. HEAT TAPES FEEDS SHALL BE LOCATED AT CEILING OF LEVEL SHOW. POWER FEEDS TO HEAT TRACE CABLE (FURNISHED BY DIV. 19) SHALL BE INSTALLED BY DIV. 16. DIV. 15 SHALL FINISH AND INSTALL HEAT TRACE CABLE.  
6. CONDUIT AND JUNCTION BOXES WITH VERTICAL RISERS SHALL BE SEALED TO PREVENT WATER ENTRY.  
7. JUNCTION BOXES WITH VERTICAL RISER SHALL HAVE A COMBINATION BREATHER-DRAIN LOCATED IN BOTTOM OF JUNCTION BOX.

1001 WESTBROOK ST.,  
PORTLAND, MAINE

PHASE II  
PARKING GARAGE

PORTLAND  
INTERNATIONAL  
JETPORT

DEPARTMENT OF  
WATERFRONT AND  
TRANSPORTATION

CITY OF PORTLAND  
PORTLAND, MAINE

CONFORMED SET  
FOR FIELD USE

Stantec Consulting Services Inc.  
22 Free Street, Suite 205  
Portland, ME USA  
04101-3900-3211  
Tel. 207.775.3211  
Fax. 207.775.8154  
www.stantec.com

155 Massachusetts Ave.  
Boston, MA 02115  
617-267-6408  
Fax 617-267-1990

**DOMENECH  
HICKS &  
KROCKMANN  
ARCHITECTS**

DATE: 02/25/08

SCALE: AS SHOWN

DESIGNED BY: M.C.

CHECKED BY: M.C.

DATE: 02/25/08

PROJECT NO.: 022508

LEVEL 2  
ELECTRICAL PLAN

E1-2

If this sheet is less than 30"x42" in size, it has been reduced. Graphic reproduction must be advised according to AIA.