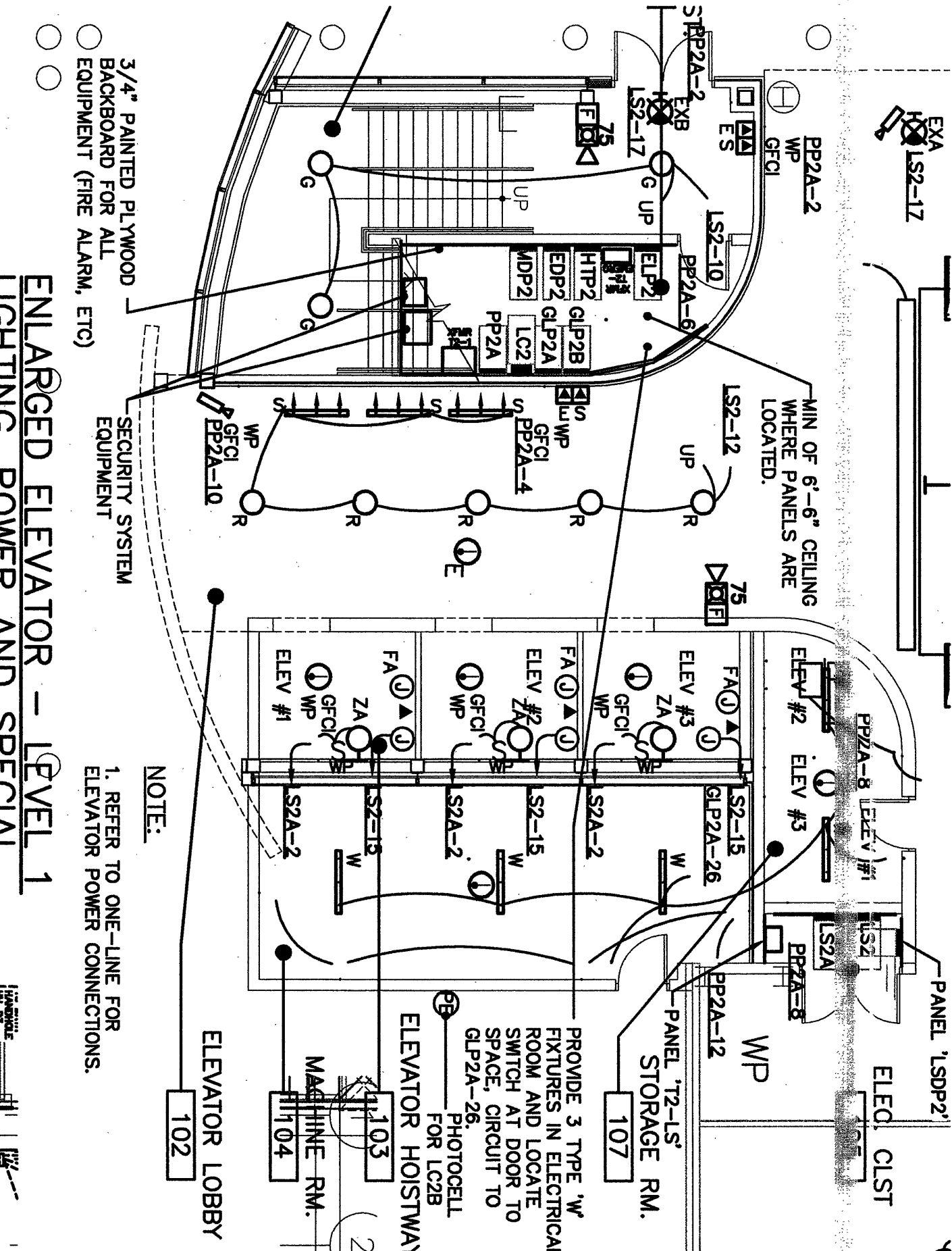
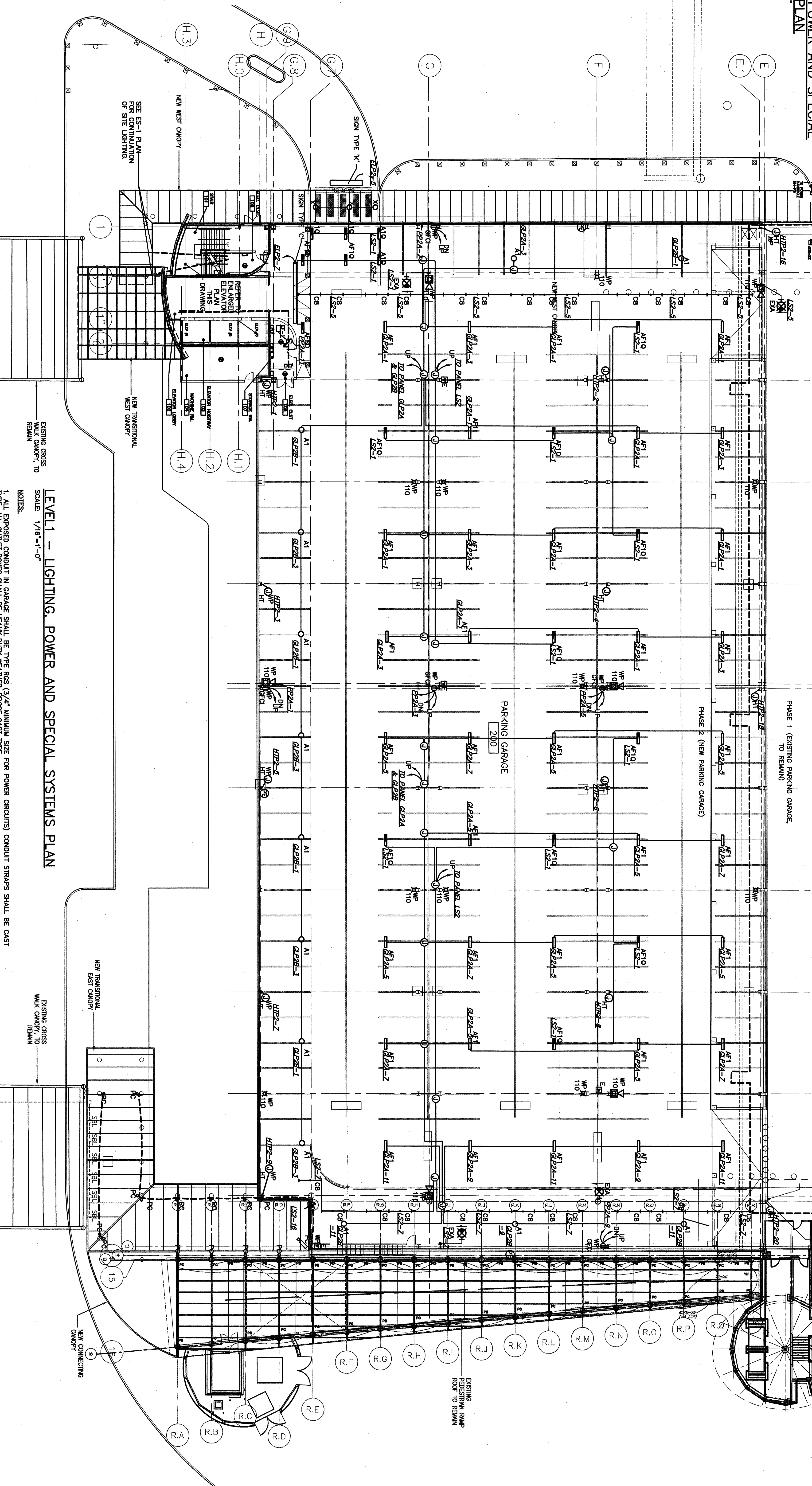


1/16"=1' 5 0 10 20 30 40ft 1/8"=1' 5 0 5 10 15 20ft 1/4"=1' 2 0 2 4 6 8 10ft 1/2"=1' 0 1 2 3 4 5ft 3/4"=1' 0 1 2 3ft 1"=1' 0 1 2ft 1 1/2"=1' 0 1 2ft 3"=1' 0 1ft



- ELEVATOR TOWER NOTES:**
1. PROVIDE JUNCTION BOX WITH LIFE SAFETY POWER, TELEPHONE OUTLET, AND FIRE ALARM SYSTEM OUTLET AT THE POINT OF EACH ELEVATOR SHAFT. ALL WIRING IN THE ELEVATOR SHAFT SHALL BE WATERPROOF.
 2. PROVIDE GFCI RECEPTACLE, WEATHERPROOF LIGHT, AND SWITCH, AT 18" ABOVE FLOOR OR ELEVATOR PIT. LOCATE NEAR PIT LADDER 48" AFF. ALL WIRING SHALL BE WATERPROOF.
 3. PROVIDE LIGHTING IN TOP OF HOISTWAY WITH SWITCH AND CONDUIT OUTLET LOCATED JUST INSIDE GROUNDWATER ACCESS DOOR.
 4. PROVIDE TELEPHONE OUTLET FOR ALL ELEVATORS. WIRING SHALL BE CONNECTED TO TELEPHONE ROOM AND LOCATED IN ELECTRICAL ROOM AND LOCATED TO GFCI-28. WIRING SHALL BE WATERPROOF.
 5. PROVIDE FIRE ALARM DEVICES PER CURRENT ELEVATOR CODE AND COORDINATE W/ FIRE PROTECTION SYSTEM EXACT QUANTITIES (3) PER ELEVATOR. (9 TOTAL)
 6. ELECTRICAL CONTRACTOR TO PROVIDE SMOKE DETECTORS IN EACH ELEVATOR LOBBY AND HOISTWAYS WHICH HAVE SPRINKLERS.
 7. ELECTRICAL CONTRACTOR SHALL PROVIDE A PAIR OF SIGNAL FEEDERS FROM THE SMOKE DETECTORS TO TERMINALS IN THE MAIN FLOOR. A SECOND PAIR OF FEEDERS SHALL ALSO BE PROVIDED FROM THE MAIN FLOOR DETECTORS TO TERMINALS IN THE ELEVATOR LOBBY TO SIGNAL ADVISORY OF DETECTORS AT MAIN FLOOR ONLY.
 8. DETECTORS FOR ELEVATORS SHALL BE ZONED SEPARATELY FROM OTHER DETECTORS IN THE ELEVATOR LOBBY.
 9. DETECTORS FOR ELEVATORS SHALL NOT BE SELF-RESETTING.
 10. DETECTORS FOR ELEVATORS SHALL NOT BE SELF-RESETTING.
 11. DETECTORS FOR ELEVATORS SHALL NOT BE SELF-RESETTING.

- ELEVATOR MACHINE ROOM NOTES:**
1. PROVIDE 480 VOLTS, 3 PHASE, 50 AMPERS AC POWER SUPPLY THROUGH RIGID SAFETY SWITCH IN MACHINE ROOM TO THE ELEVATOR CONTROLLER. LOCATE DISCONNECT SWITCH WITHIN 5' OF THE SAFETY SWITCH.
 2. PROVIDE SEPARATE 120 VOLTS, 15 AMP. CIRCUIT FOR THE CAR LIGHT, FAN, AND ALARM BELL, AND RUN TO MACHINE ROOM LOCATE NEAR THAT ELEVATOR'S DISCONNECT SWITCH. (PROVIDE FEEDER TO BOX IN SHAFT) DISCONNECTS SHALL BE MOUNTED ON 3/4" THICK PLYWOOD MOUNTING BACKBOARD PAINTED W/ 2 COATS GREY EMERALD PAINT.
 3. COORDINATE WITH CG AND PROVIDE TEMPORARY POWER IF REQUIRED BY ELEVATOR CONTRACTOR FOR INSTALLATION OF ELEVATOR EQUIPMENT. THIS INCLUDES NECESSARY THREE PHASE POWER FOR INSTALLATION OF ELEVATOR EQUIPMENT OF THE SAME CAPACITANTS FOR THE ELEVATOR. AND OTHER FOR OPERATING WORK SHOP.
 4. FOR ELEVATORS TO OPERATE ON EMERGENCY POWER PROVIDE EMERGENCY GENERATOR SYSTEM COMPLETE WITH TWO PANS OF NO. 7 WIRING FROM ADVISORY TAP CONTACTS ON AUTOMATIC TRANSFER SWITCH TO TWO PANS OF ELEVATOR CONTROLLER THROUGH A RIGID SAFETY SWITCH IN MACHINE ROOM.
 5. FOR BATTERY OPERATED LOWERING UNITS (PROVIDED BY THE ELEVATOR CONTRACTOR), SEE MANUFACTURERS INSTRUCTIONS FOR AUXILIARY CONTACTS AND MECHANICALLY ACTUATED SWITCH REQUIREMENTS. WHEN SPRINKLERS ARE PRESENT IN THE HOISTWAY AND/OR MACHINE ROOM, MEANS SHALL BE PROVIDED TO AUTOMATICALLY DISCONNECT THE MAIN LINE POWER SUPPLY TO THE ELEVATORS PRIOR TO APPLICATION OF WATER.
 6. CG TO COORDINATE WITH THE ELECTRICAL CONTRACTOR FOR PROVIDING THE CONDUIT FROM HOISTWAY TO LOCATION OF OPERATING AND/OR SIGNAL DEVICES. FINAL CONNECTION OF INDICATORS SHALL BE BY ELEVATOR CONTRACTOR.
 7. ELECTRICAL CONTRACTOR TO PROVIDE COMPLETE ALL SPEAKERS, DEVICES AND POWER SOURCE FOR PUBLIC ADDRESS SYSTEM. PROVIDE ALL WIRING AND ELECTRICAL CONNECTIONS IN COORDINATION AND INSTALLATION OF SYSTEM ON ELEVATOR CAR.



LEVEL 1 - LIGHTING, POWER AND SPECIAL SYSTEMS PLAN
SCALE: 1/16"=1'-0"

- NOTES:**
1. ALL DEPOSED CONDUIT IN GARAGE SHALL BE TYPE RGS (3/4" MINIMUM SIZE FOR POWER CIRCUITS) CONDUIT STRAPS SHALL BE CAST IN PLACE. ALL OUTLET BOXES SHALL BE HEAVY DUTY WEATHER-PROOF CAST TYPE.
 2. CONDUIT ROUTES ARE SHOWN FOR COORDINATION PURPOSES NOT ALL CONDUITS TO SERVE ALL SYSTEMS ARE SHOWN, ALTERNATE CONDUIT ROUTES MAY BE PROPOSED.
 3. STRUCTURAL TEES HAVE 3/4" PRECAST SLOTS. SEE STRUCTURAL DRAWINGS.
 4. IT IS THE INTENT THAT CONDUIT SHALL BE RUN ON OR CLOSE TO CONCRETE OR BEAM SURFACES.
 5. HEAT TAP FEEDS SHALL BE LOCATED AT CEILING OF LEGAL SHOW. POWER FEEDS TO HEAT TRACE CABLE (FINISHED BY DIV. 15) SHALL BE INSTALLED BY DIV. 16. DIV. 15 SHALL FINISH AND INSTALL HEAT TRACE CABLE.
 6. CONDUIT AND JUNCTION BOXES WITH VERTICAL RISERS SHALL BE SEALED TO PREVENT WATER ENTRY.
 7. JUNCTION BOXES WITH VERTICAL RISERS SHALL HAVE A COMBINATION BREAKER-DRAIN LOCATED IN BOTTOM OF JUNCTION BOX.

<p>Stattec Stattec Consulting Services Inc. 22 Free Street, Suite 205 Orlando, FL 32801 Tel. 407.775.3311 Fax. 407.775.6434 www.stattec.com</p>	<p>DOMENECH HICKS & KROCKMALNIC ARCHITECTS 155 Massachusetts Ave. Boston, MA 02115 617-267-4400 617-267-1990</p>	<p>CITY OF PORTLAND PORTLAND, MAINE DEPARTMENT OF WATERFRONT AND TRANSPORTATION</p>	<p>CONFORMED SET FOR FIELD USE</p>	<p>PORTLAND INTERNATIONAL JETPORT PHASE II PARKING GARAGE 1001 WESTBROOK ST., PORTLAND, MAINE</p>	<p>DATE: 02/22/08</p>	<p>NO. OF SHEETS: 11</p>	<p>SHEET NO. 11</p>	<p>PROJECT NO. 022208</p>	<p>SCALE: AS SHOWN</p>	<p>LEVEL 1 ELECTRICAL PLAN E-1-1</p>	

If this sheet is less than 30"x42" in size, it has been reduced. Graphic scales must be adjusted accordingly.