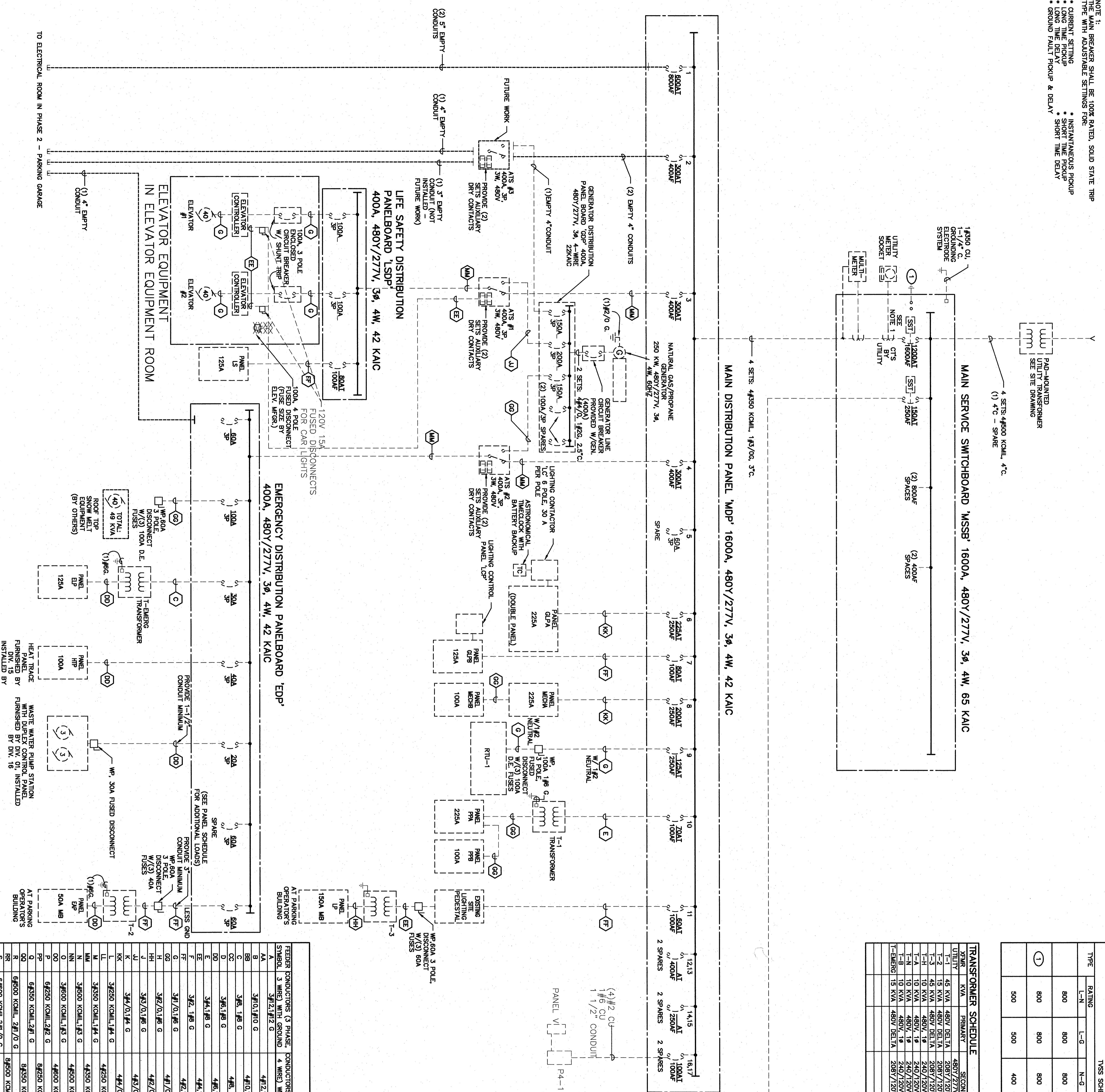


NOTE: THE MAIN BREAKER SHALL BE 100% RATED, SOLID STATE TRIP TYPE WITH ADJUSTABLE SETTINGS FOR:

- CURRENT SETTING
- INSTANTANEOUS PICKUP
- LONG TIME DELAY
- SHORT TIME DELAY
- SHORT TIME PICKUP
- SHORT TIME DELAY
- SHORT TIME PICKUP & DELAY
- SHORT TIME DELAY
- SHORT TIME PICKUP
- SHORT TIME DELAY
- SHORT TIME PICKUP
- SHORT TIME DELAY



TRANSFORMER SCHEDULE

TYPE	RATING	TMS SCHEDULE			MFG.	INSTALLATION
		L-G	N-G	MOOV		
1	800	800	800	320	APT SERIES TE/A0004HP	SUBSTATION SWITCH BOARD MOUNTED
2	800	800	800	320	APT SERIES TE/A0004HP	SWITCH BOARD MOUNTED
3	500	500	400	MOOV 150	APT SERIES SPP/2HP-G	PANEL BOARD MOUNTED

FEEDER SCHEDULE

SYMBOL	3 PHASE	CONDUCTORS	3 PHASE	CONDUIT	FEEDER	CONDUCTORS	3 PHASE	CONDUIT	AMPERE RATING
A	3#12.0	G	4#12.0	3/4"	3#12.0	G	4#12.0	3/4"	20
B	3#10.0	G	4#10.0	3/4"	3#10.0	G	4#10.0	3/4"	30
C	3#8.0	G	4#8.0	3/4"	3#8.0	G	4#8.0	3/4"	50
D	3#6.0	G	4#6.0	3/4"	3#6.0	G	4#6.0	3/4"	80
E	3#4.0	G	4#4.0	3/4"	3#4.0	G	4#4.0	3/4"	100
F	3#2.0	G	4#2.0	3/4"	3#2.0	G	4#2.0	3/4"	150
G	3#1.0	G	4#1.0	3/4"	3#1.0	G	4#1.0	3/4"	200
H	3#0.5	G	4#0.5	3/4"	3#0.5	G	4#0.5	3/4"	225
I	3#0.25	G	4#0.25	3/4"	3#0.25	G	4#0.25	3/4"	250
J	3#0.125	G	4#0.125	3/4"	3#0.125	G	4#0.125	3/4"	275
K	3#0.0625	G	4#0.0625	3/4"	3#0.0625	G	4#0.0625	3/4"	300
L	3#0.03125	G	4#0.03125	3/4"	3#0.03125	G	4#0.03125	3/4"	350
M	3#0.015625	G	4#0.015625	3/4"	3#0.015625	G	4#0.015625	3/4"	400
N	3#0.0078125	G	4#0.0078125	3/4"	3#0.0078125	G	4#0.0078125	3/4"	450
O	3#0.00390625	G	4#0.00390625	3/4"	3#0.00390625	G	4#0.00390625	3/4"	500
P	3#0.001953125	G	4#0.001953125	3/4"	3#0.001953125	G	4#0.001953125	3/4"	600
Q	3#0.0009765625	G	4#0.0009765625	3/4"	3#0.0009765625	G	4#0.0009765625	3/4"	700
R	3#0.00048828125	G	4#0.00048828125	3/4"	3#0.00048828125	G	4#0.00048828125	3/4"	800
S	3#0.000244140625	G	4#0.000244140625	3/4"	3#0.000244140625	G	4#0.000244140625	3/4"	900
SS	3#0.0001220703125	G	4#0.0001220703125	3/4"	3#0.0001220703125	G	4#0.0001220703125	3/4"	1000

NOTES:
 1. CONDUCTOR SIZES FOR ACCEPTABLE CONDUCTOR TYPES
 2. CONDUIT SIZES SHOWN ARE MINIMUM

EXISTING ELECTRICAL ONE-LINE DIAGRAM

PORTLAND INTERNATIONAL JETPORT

PHASE II PARKING GARAGE

1001 WESTBROOK ST., PORTLAND, MAINE

CONFIRMED SET FOR FIELD USE

DEPARTMENT OF WATERFRONT AND TRANSPORTATION

Startec
 Startec Consulting Services Inc.
 22 Free Street, Suite 205
 Portland, ME 04101-5900
 Tel: 207-775-6434
 Fax: 207-775-6434
 www.startec.com

HICKS & KROCKMALLINC ARCHITECTS
 155 Massachusetts Ave., Boston, MA 02115
 Tel: 617-267-6408
 Fax: 617-267-1990

DOMENECH
HICKS & KROCKMALLINC ARCHITECTS

155 Massachusetts Ave., Boston, MA 02115
 Tel: 617-267-6408
 Fax: 617-267-1990

Checked by: MLC
 Date: 02/25/08

Scale: AS SHOWN

E0-1