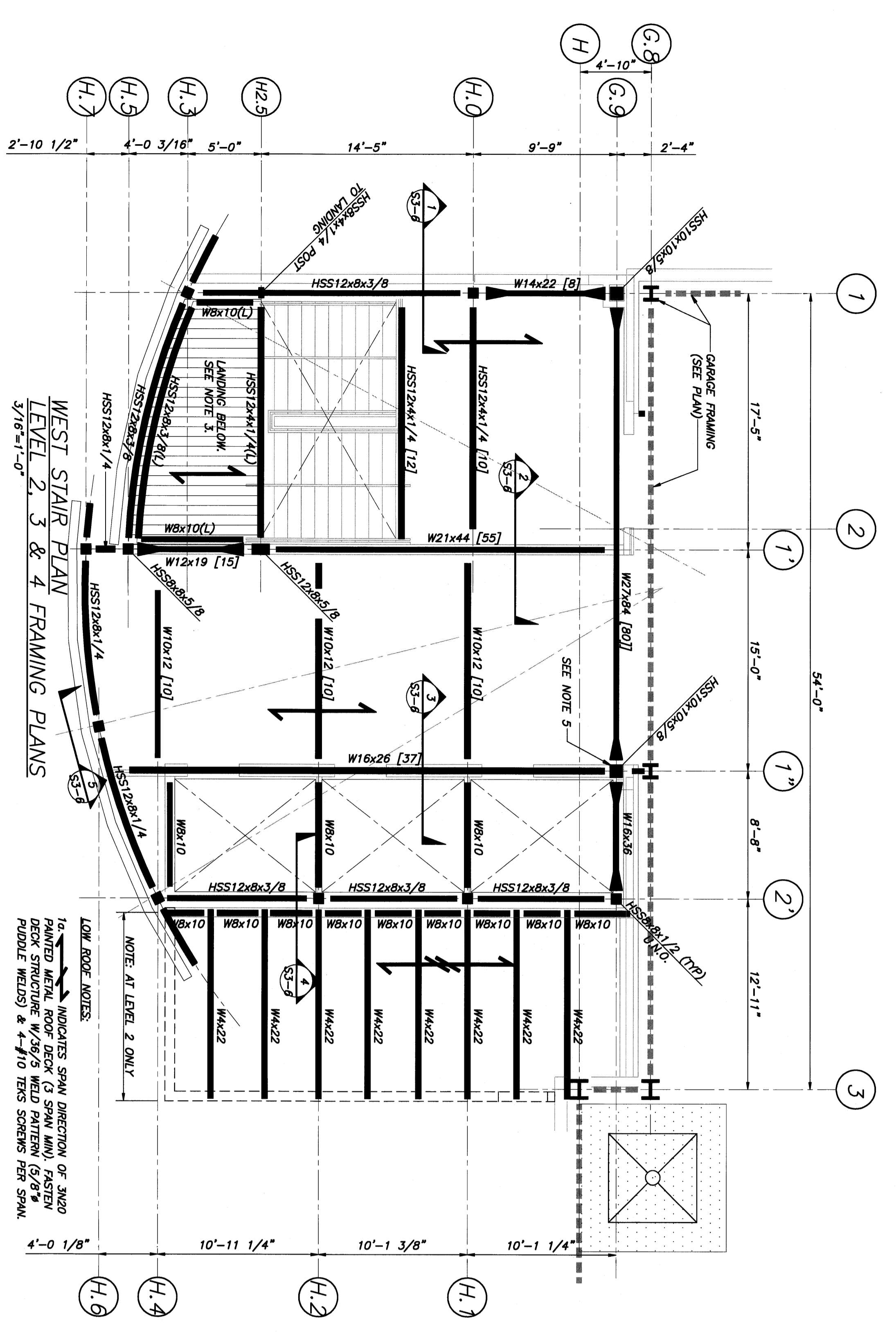


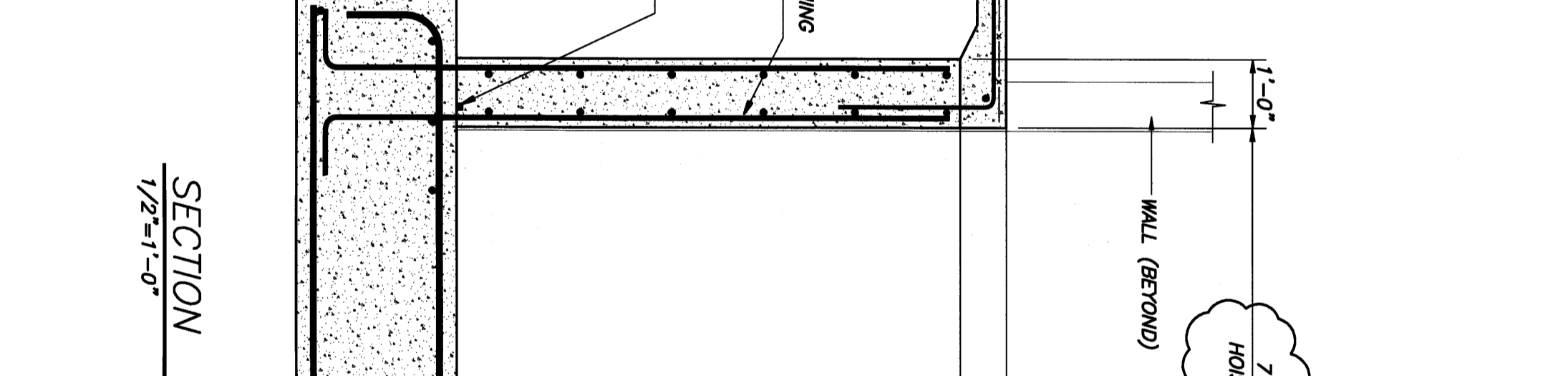
1/16"=1' 5 0 10 20 30 40ft 1/8"=1' 5 0 5 10 15 20ft 1/4"=1' 2 0 2 4 6 8 10ft 1/2"=1' 1 0 1 2 3 4 5ft 3/4"=1' 1 0 1 2 3ft 1"=1' 0 1 2 3ft 1 1/2"=1' 0 1 2ft 2"=1' 0 1 2ft 3"=1' 0 1 2ft



WEST STAIR PLAN
LEVEL 2, 3 & 4 FRAMING PLANS

NOTES:
1. 1/8" DIA CONCRETE SPAN DIRECTION OF 6" 8" CONG SLAB ON 3".
2. 1/8" DIA CONCRETE SPAN DIRECTION OF 6" 8" CONG SLAB ON 3".
3. STAIR LANDING CONSTRUCTION CONSISTS OF A 6" 8" CONG SLAB ON 3".
4. PROVIDE REINFORCING L3X3X1/4 AT (4) CORNERS OF HSS COL FROM OIL BASE TO CLEAR BEAM/COL CONNECTIONS AT LEVEL 2.
5. PROVIDE REINFORCING L3X3X1/4 AT (4) CORNERS OF HSS COL FROM OIL BASE TO CLEAR BEAM/COL CONNECTIONS AT LEVEL 2.

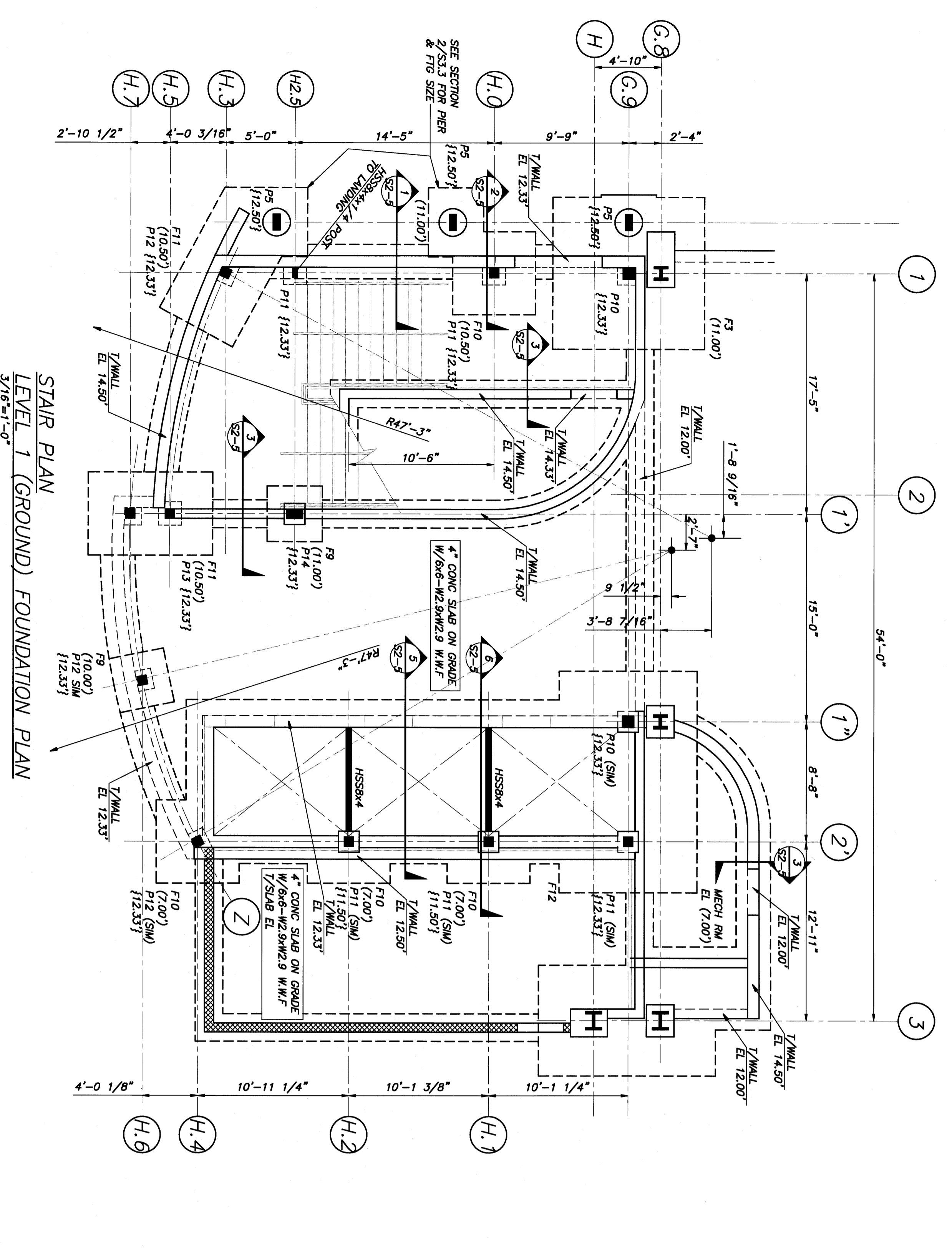
LOW ROOF NOTES:
1. PAINTED METAL ROOF DECK (3 SPAN MIN) FASTEN DECK STRUCTURE W/3/8" WELD PATTERNS (6X9) PER DETAIL W/3/8" WELD PATTERNS PER SHM.
2. PROVIDE REINFORCING L3X3X1/4 AT (4) CORNERS OF HSS COL FROM OIL BASE TO CLEAR BEAM/COL CONNECTIONS AT LEVEL 2.



SECTION 5 ALT S1-7

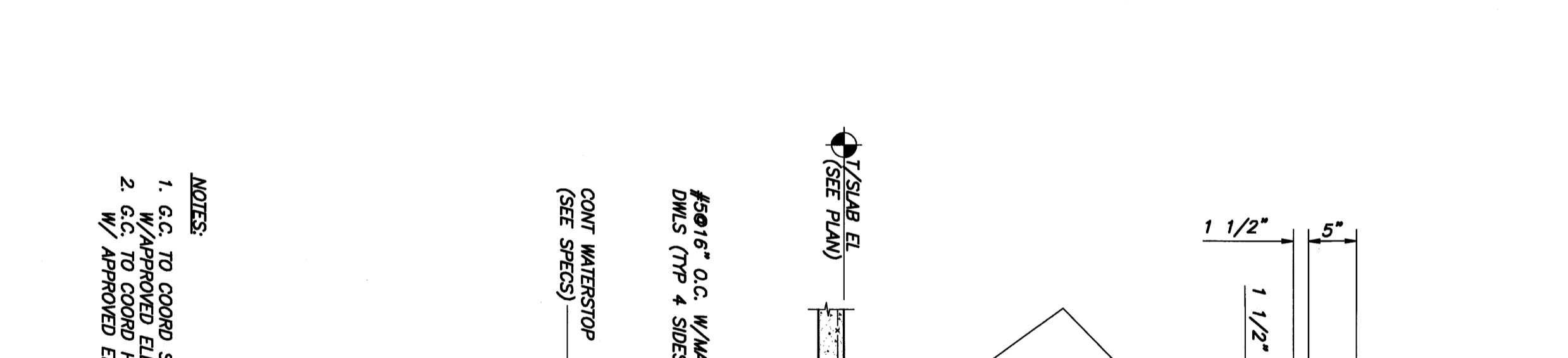
NOTES:
1. G.C. TO COORD SLUMP FT. SIZE & LOCATION.
2. G.C. TO COORD ELEVATOR SHIP DIMS.
3. G.C. TO COORD FIREWORKS BEHIND WALL.
4. APPROVED ELEVATOR SHIP DIMS.

SECTION 1/2"=1'-0"



STAIR PLAN
LEVEL 1 (GROUND) FOUNDATION PLAN

NOTES:
1. 1/8" DIA CONCRETE SPAN DIRECTION OF 6" 8" CONG SLAB ON 3".
2. 1/8" DIA CONCRETE SPAN DIRECTION OF 6" 8" CONG SLAB ON 3".
3. STAIR LANDING CONSTRUCTION CONSISTS OF A 6" 8" CONG SLAB ON 3".
4. PROVIDE REINFORCING L3X3X1/4 AT (4) CORNERS OF HSS COL FROM OIL BASE TO CLEAR BEAM/COL CONNECTIONS AT LEVEL 2.
5. PROVIDE REINFORCING L3X3X1/4 AT (4) CORNERS OF HSS COL FROM OIL BASE TO CLEAR BEAM/COL CONNECTIONS AT LEVEL 2.



SECTION 6 ALT S1-7

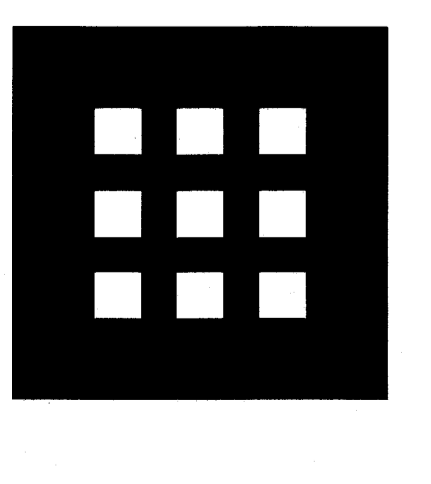
NOTES:
1. G.C. TO COORD SLUMP FT. SIZE & LOCATION.
2. G.C. TO COORD ELEVATOR SHIP DIMS.
3. G.C. TO COORD FIREWORKS BEHIND WALL.
4. APPROVED ELEVATOR SHIP DIMS.

SECTION 1/2"=1'-0"

NOTES:
1. G.C. TO COORD SLUMP FT. SIZE & LOCATION.
2. G.C. TO COORD ELEVATOR SHIP DIMS.
3. G.C. TO COORD FIREWORKS BEHIND WALL.
4. APPROVED ELEVATOR SHIP DIMS.

SECTION 1/2"=1'-0"

If this sheet is less than 30"x42" in size, it has been reduced. In proper scales must be indicated on each sheet.



**DOMENECH
HICKS &
KROCKMALNIC
ARCHITECTS**
155 Massachusetts Ave.
Boston, MA 02115
617-267-6408
Fax 617-267-1990

BECKER
Structural engineers, inc.
77 North Street
Portland, ME 04101
Tel: 207-799-4322
Fax: 207-799-4322
www.becker-engineers.com

Confirmed-Set
for Field Use

CITY OF PORTLAND
PORTLAND, MAINE
DEPARTMENT OF
WATERFRONT AND
TRANSPORTATION



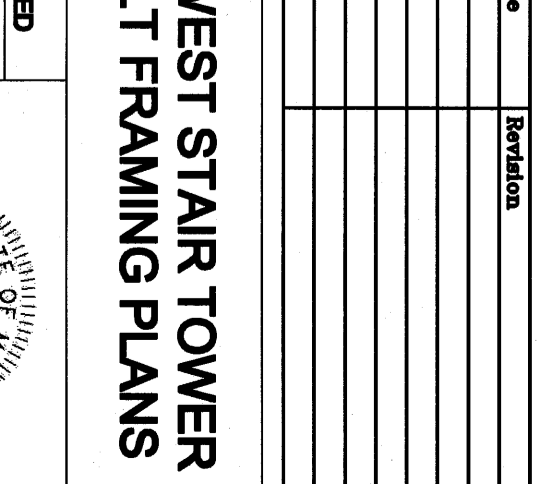
PORTLAND
INTERNATIONAL
JETPORT
PHASE II
PARKING GARAGE
1001 WESTBROOK ST.,
PORTLAND, MAINE

No.	Date	Revision

**WEST STAIR TOWER
ALT FRAMING PLANS**

NOTED

Drawn By: [Signature]
Checked By: [Signature]
Title: [Signature]
Date: 2/26/2009



S1-7