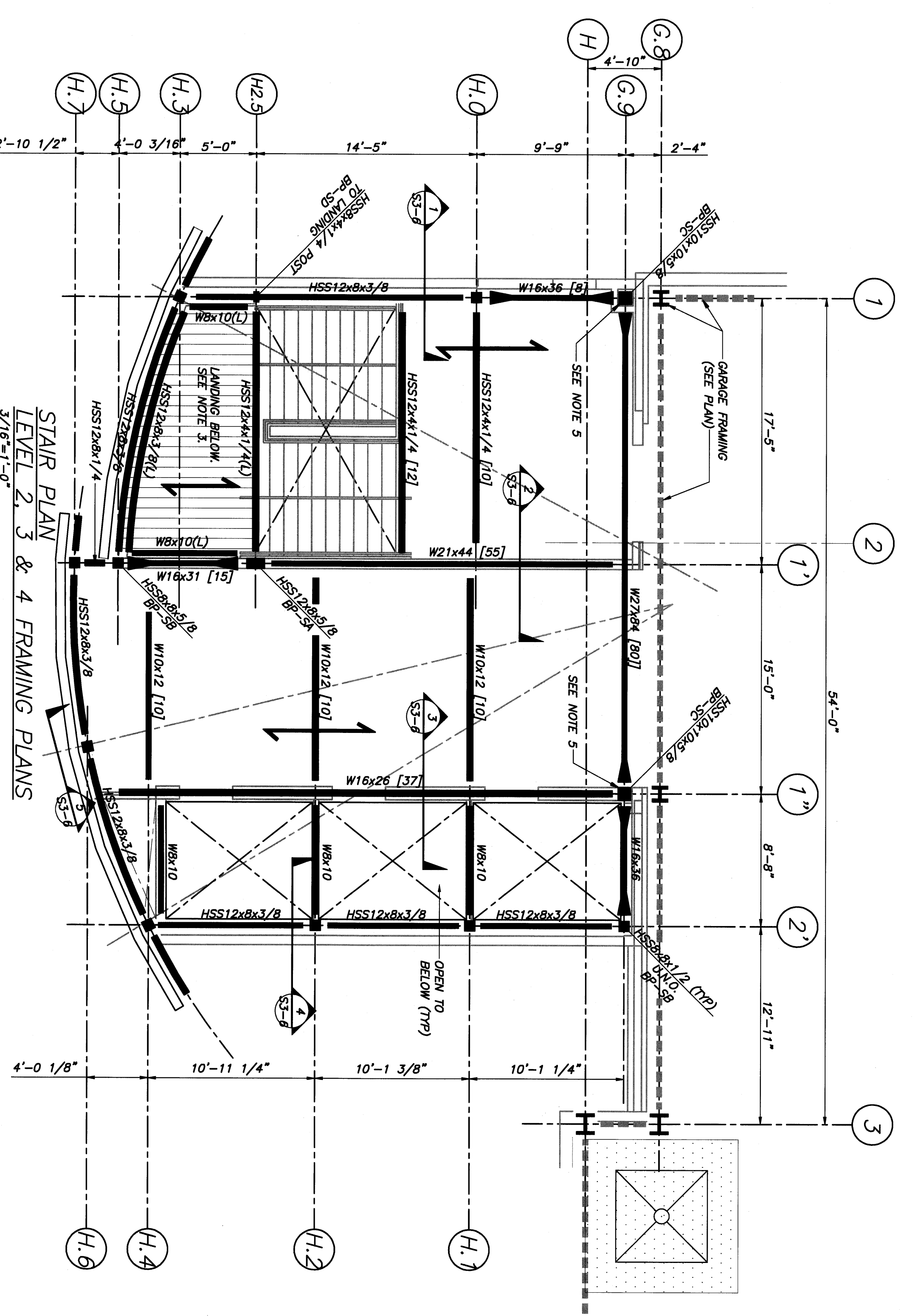
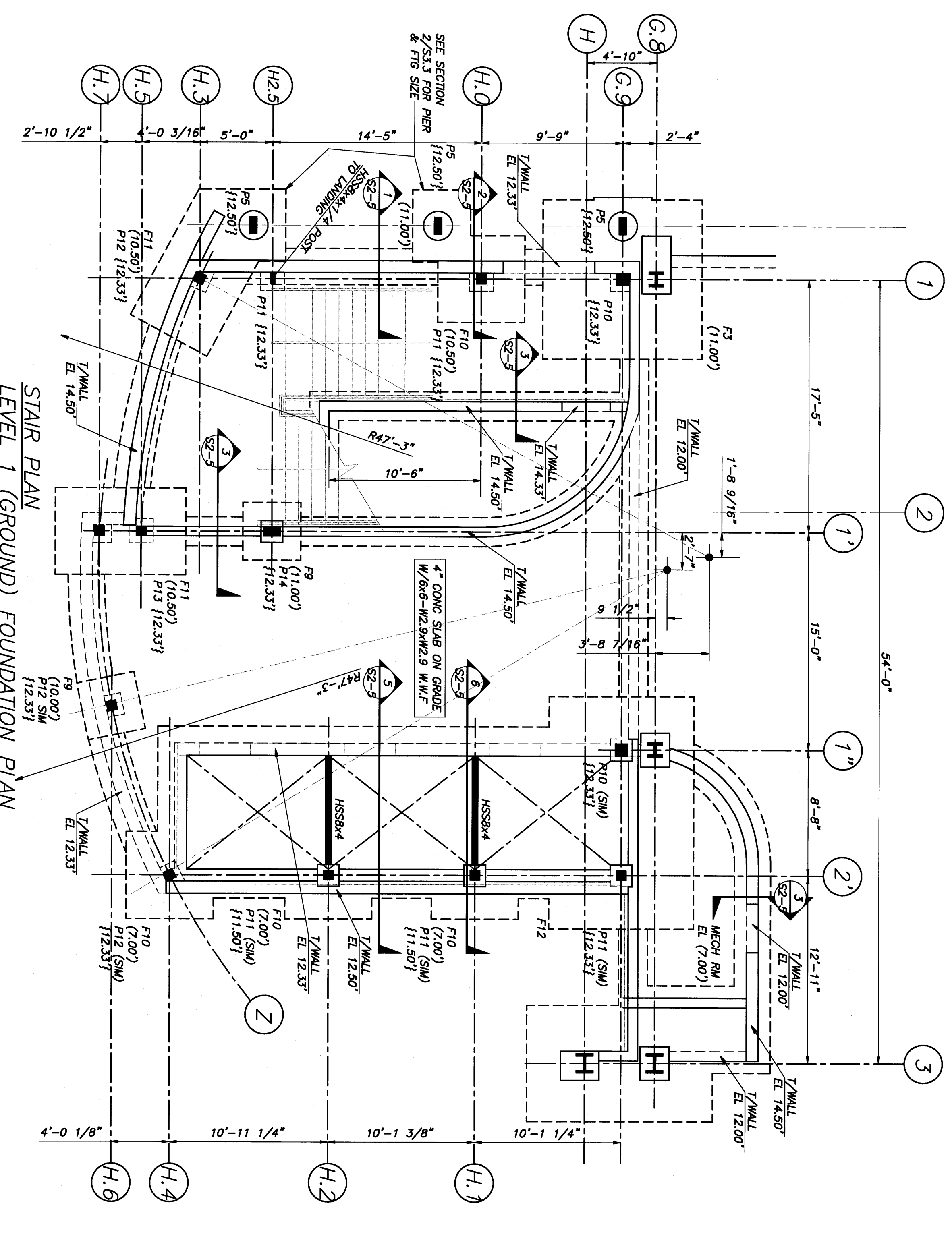


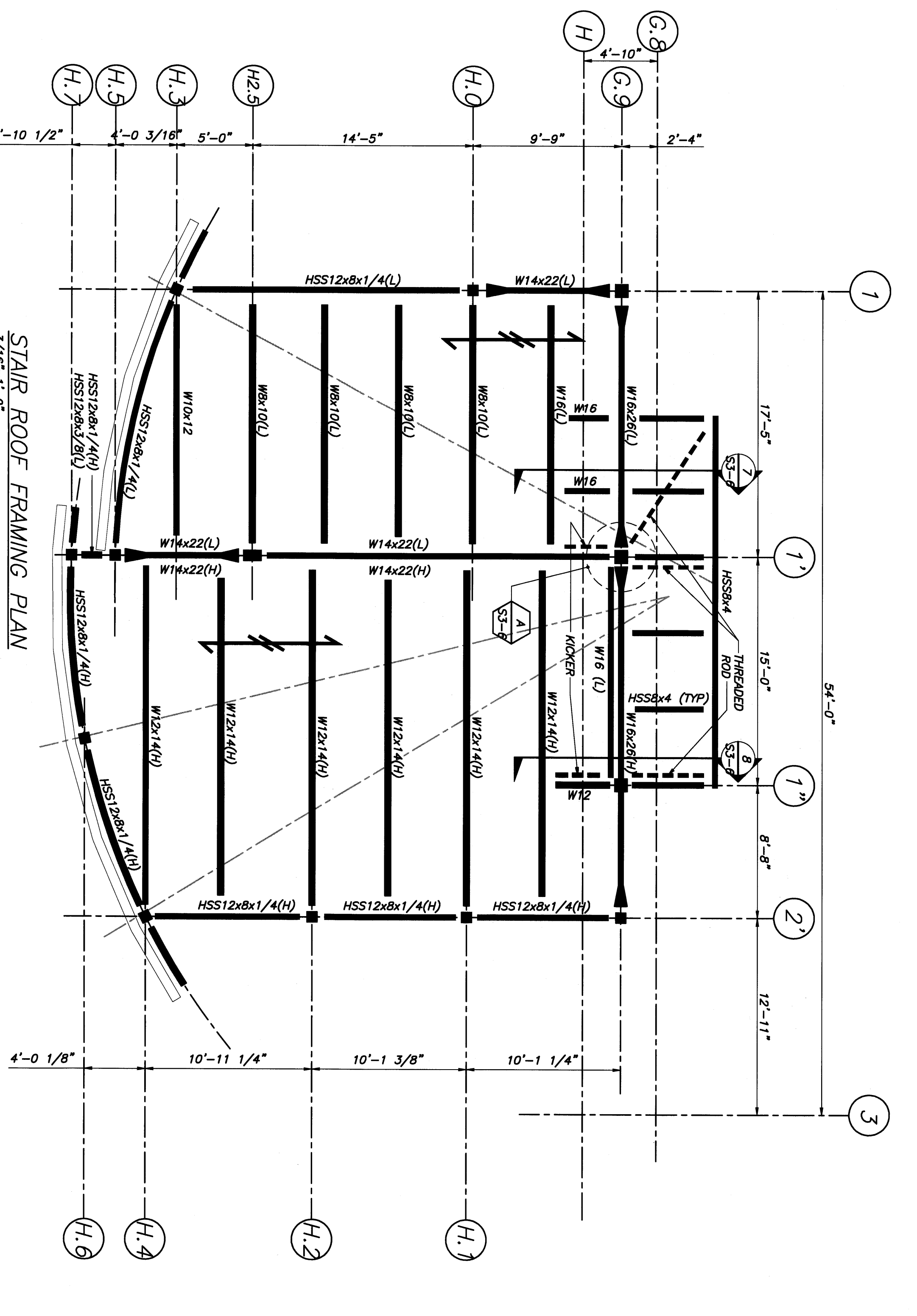
1/16"=1' 0 10 20 30 40ft 1/8"=1' 0 5 10 15 20ft 1/4"=1' 0 2 4 6 8 10ft 1/2"=1' 0 1 2 3 4 5ft 3/4"=1' 0 1 2 3 4 5ft 1"=1' 0 1 2 3 4 5ft 1 1/2"=1' 0 1 2 3 4 5ft 2"=1' 0 1 2 3 4 5ft 3"=1' 0 1 2 3 4 5ft



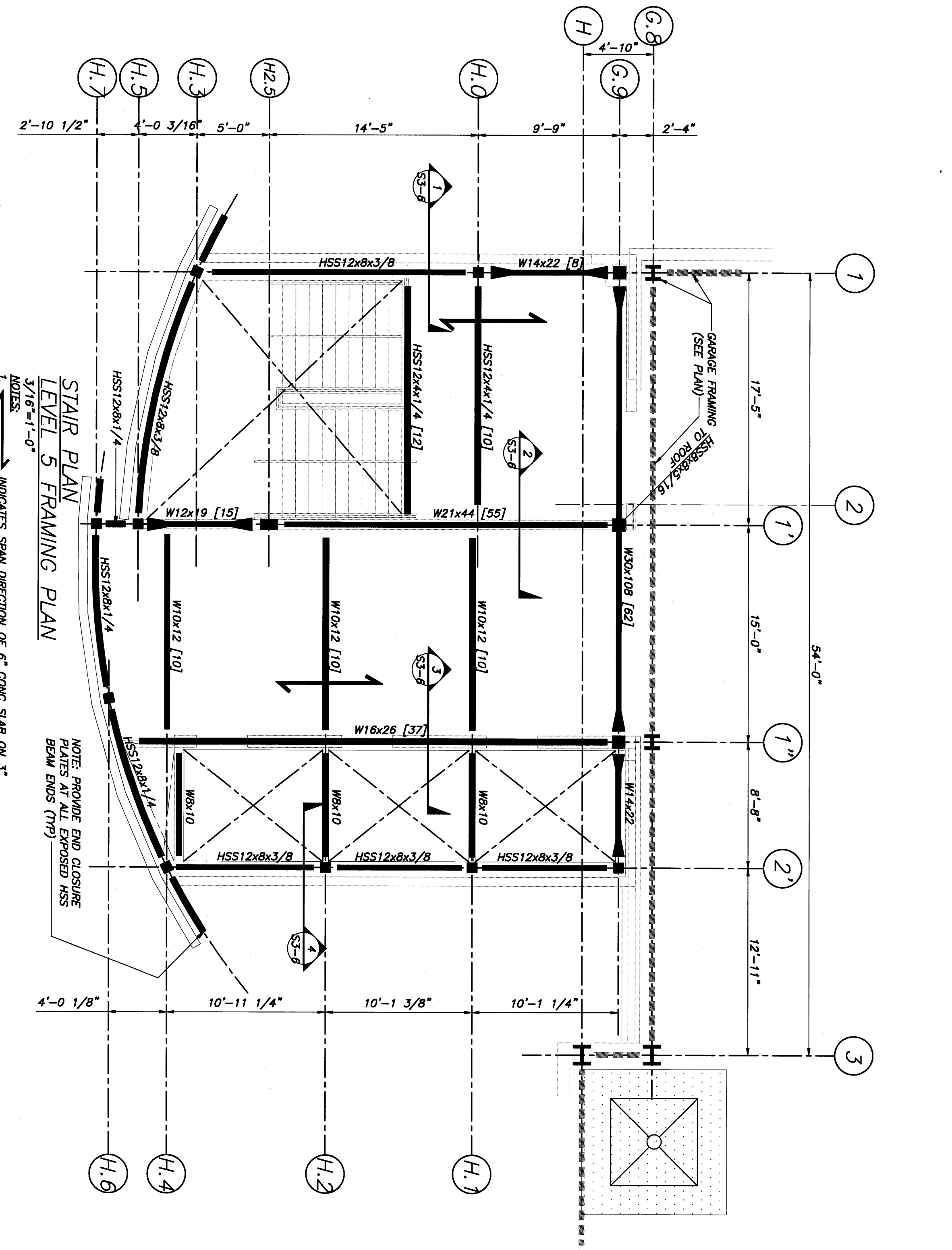
NOTES:  
 1. ROOF FRAME INDICATES SPAN DIRECTION OF 6" CONC SLAB ON 3".  
 2. STAIR LANDING CONSTRUCTION CONSISTS OF A 6" CONC SLAB ON 3".  
 3. STAIR LANDING CONSTRUCTION CONSISTS OF A 6" CONC SLAB ON 3".  
 4. PROVIDE REINFORCING L3x3/4" AT (4) CORNERS OF HSS COL FROM COL BASE TO CLEAR BEAM/COL CONNECTIONS AT LEVEL 2.  
 5. PROVIDE REINFORCING L3x3/4" AT (4) CORNERS OF HSS COL FROM COL BASE TO CLEAR BEAM/COL CONNECTIONS AT LEVEL 2.



NOTES:  
 1. 7/8" DIA ELEV 13.00' GROUND SCHEDULE.  
 2. SEE CIVIL S-4 FOR PILES.  
 3. SEE CIVIL S-4 FOR PILES.



NOTES:  
 1. ROOF FRAME INDICATES SPAN DIRECTION OF 6" CONC SLAB ON 3".  
 2. STAIR LANDING CONSTRUCTION CONSISTS OF A 6" CONC SLAB ON 3".  
 3. STAIR LANDING CONSTRUCTION CONSISTS OF A 6" CONC SLAB ON 3".  
 4. PROVIDE REINFORCING L3x3/4" AT (4) CORNERS OF HSS COL FROM COL BASE TO CLEAR BEAM/COL CONNECTIONS AT LEVEL 2.  
 5. PROVIDE REINFORCING L3x3/4" AT (4) CORNERS OF HSS COL FROM COL BASE TO CLEAR BEAM/COL CONNECTIONS AT LEVEL 2.



NOTES:  
 1. 7/8" DIA ELEV 13.00' GROUND SCHEDULE.  
 2. SEE CIVIL S-4 FOR PILES.  
 3. SEE CIVIL S-4 FOR PILES.

If this sheet is less than 30"x42" in size it has been reduced. Graphic scales must be adjusted accordingly.

**DOMENECH HICKS & KROCKMALNIC ARCHITECTS**  
 155 Massachusetts Ave.  
 Boston, MA 02115  
 617-267-6408  
 Fax 617-267-1990

**BECKER**  
 STRUCTURAL ENGINEERS, LLC  
 200 State Street  
 Boston, MA 02109  
 617-267-1990  
 Fax 617-267-1990

City of Portland  
 Department of Waterfront and Transportation  
 Confirmed-Set for Field Use

**PMMI**  
 PORTLAND INTERNATIONAL JETPORT  
 PHASE II  
 PARKING GARAGE  
 1001 WESTBROOK ST.,  
 PORTLAND, MAINE

Scale: NOTED  
 Title: WEST STAIR TOWER FRAMING PLANS  
 No. Date Revision  
 Date: 2/26/2008

**S1-6**