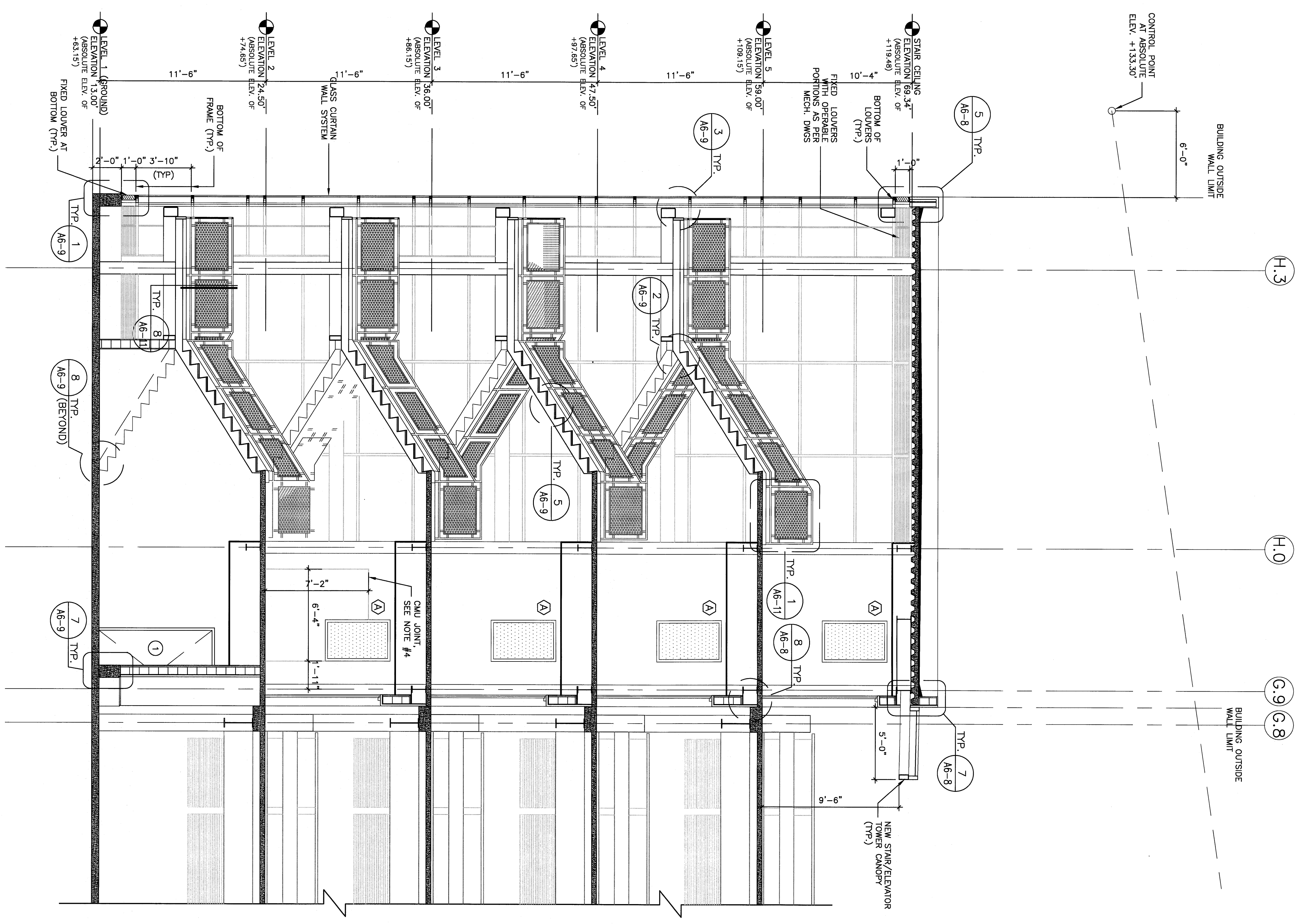
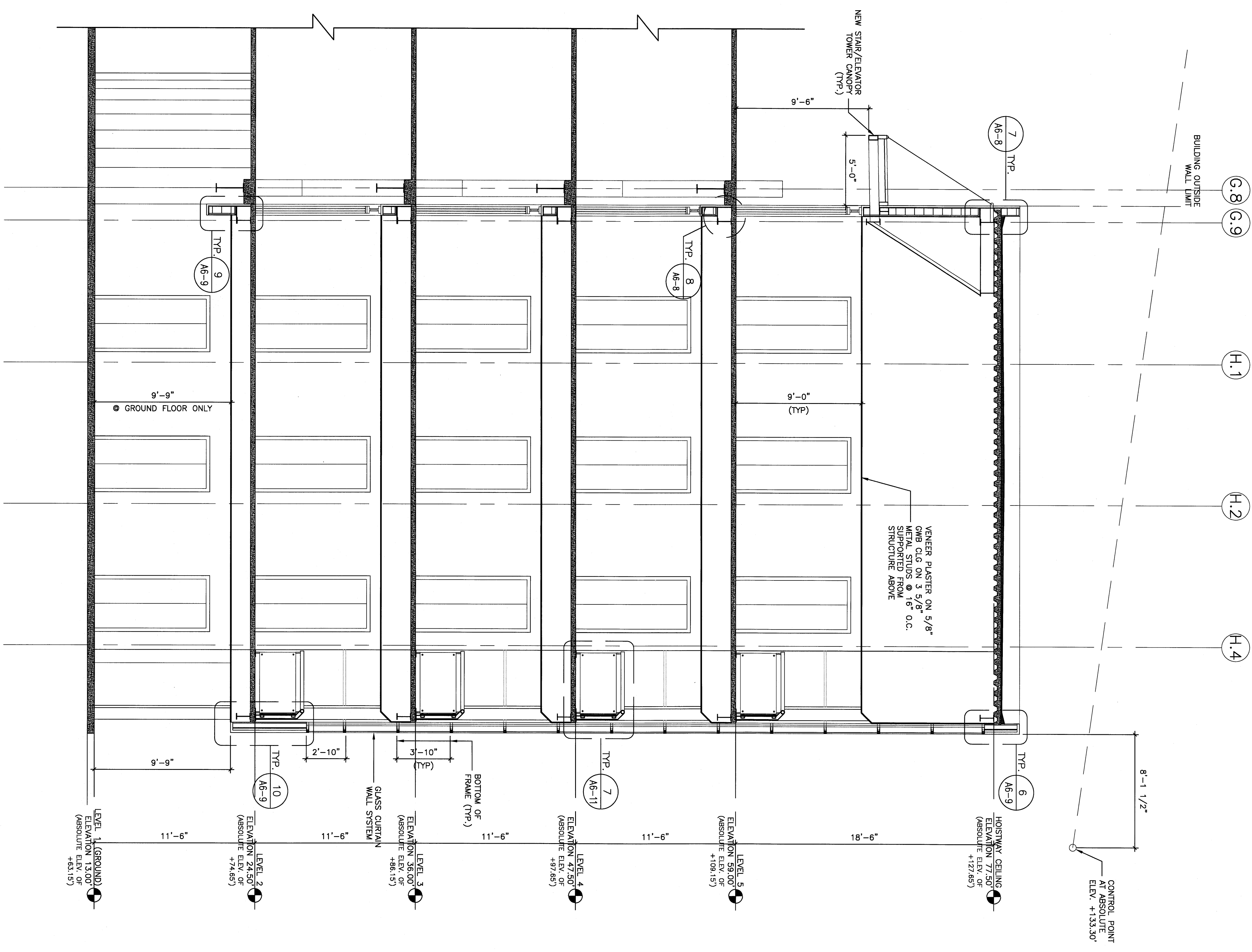


- NOTE:**
1. GRID INTERSECTIONS H.3 & 1 AT WEST SIDE, AND H.4 & 1 AT EAST SIDE SHOULD STAY IN PLACE, IF ANY CHANGES ON DIMENSIONS OCCURS.
 2. ALL CMU WALLS SHALL BE 2 HR FIRE RATED.
 3. FOR RAILING DETAILS, SEE DRAWING A6-11.
 4. CMU JOINT SHALL BE CONSTRUCTED AROUND DOOR ACCESS.



1 SECTION A
SCALE 1/4" = 1'-0"



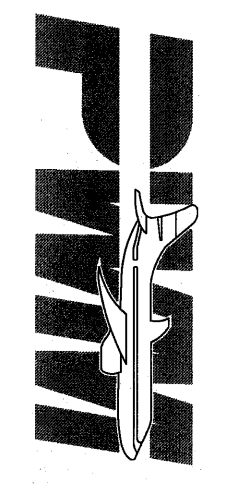
2 SECTION B
SCALE 1/4" = 1'-0"

**DOMENECH
HICKS &
KROCKMALNIC
ARCHITECTS**

155 Massachusetts Ave.
Boston, MA 02115
617-267-6408
Fax 617-267-1990

CONFORMED SET
FOR FIELD USE

CITY OF PORTLAND
PORTLAND, MAINE
DEPARTMENT OF
WATERFRONT AND
TRANSPORTATION



PORTLAND
INTERNATIONAL
JETPORT
PHASE II
PARKING GARAGE
1001 WESTBROOK ST.,
PORTLAND, MAINE

TITLE
STAIR / ELEVATOR TOWER
SECTIONS A-A & B-B

Scale: 1/4" = 1'-0"

NO.	DATE	REVISION
1	07/11/10	ISSUE #1
2	07/13/10	ISSUE #2
3	07/13/10	ISSUE #3
4	07/13/10	ISSUE #4

Drawn by: M. M.
 Checked by: M. M.
 Date: 7/13/10
 Job No.: 2908
 Title: A6-6
 Scale: 1/4" = 1'-0"
 Date: 2/28/08

If this sheet is less than 30"x42" in size, it has been reduced. Graphic scales must be adjusted accordingly.