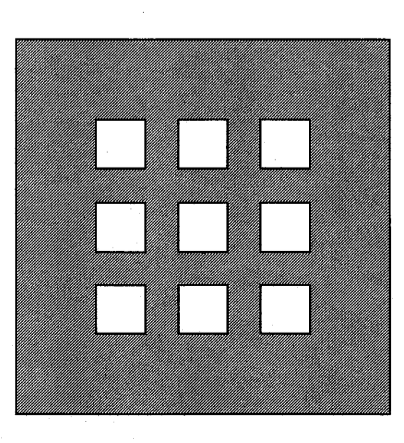


1/16"=1' 0 10 20 30 40ft 1/8"=1' 0 5 10 15 20ft 1/4"=1' 0 2 4 6 8 10ft 1/2"=1' 0 1 2 3 4 5ft 3/4"=1' 0 1 2 3ft 1"=1' 0 1 2ft 1 1/2"=1' 0 2ft 3"=1' 0 1ft

If this sheet is less than 30"x42" in size, it has been reduced. Graphic scales must be adjusted accordingly.



**DOMENECH
HICKS &
KROCKMALNIC**
ARCHITECTS
155 Massachusetts Ave.
Boston, MA 02115
617-267-6400
617-267-1990

CONFORMED SET
FOR FIELD USE

CITY OF PORTLAND
PORTLAND, MAINE
DEPARTMENT OF
WATERFRONT AND
TRANSPORTATION

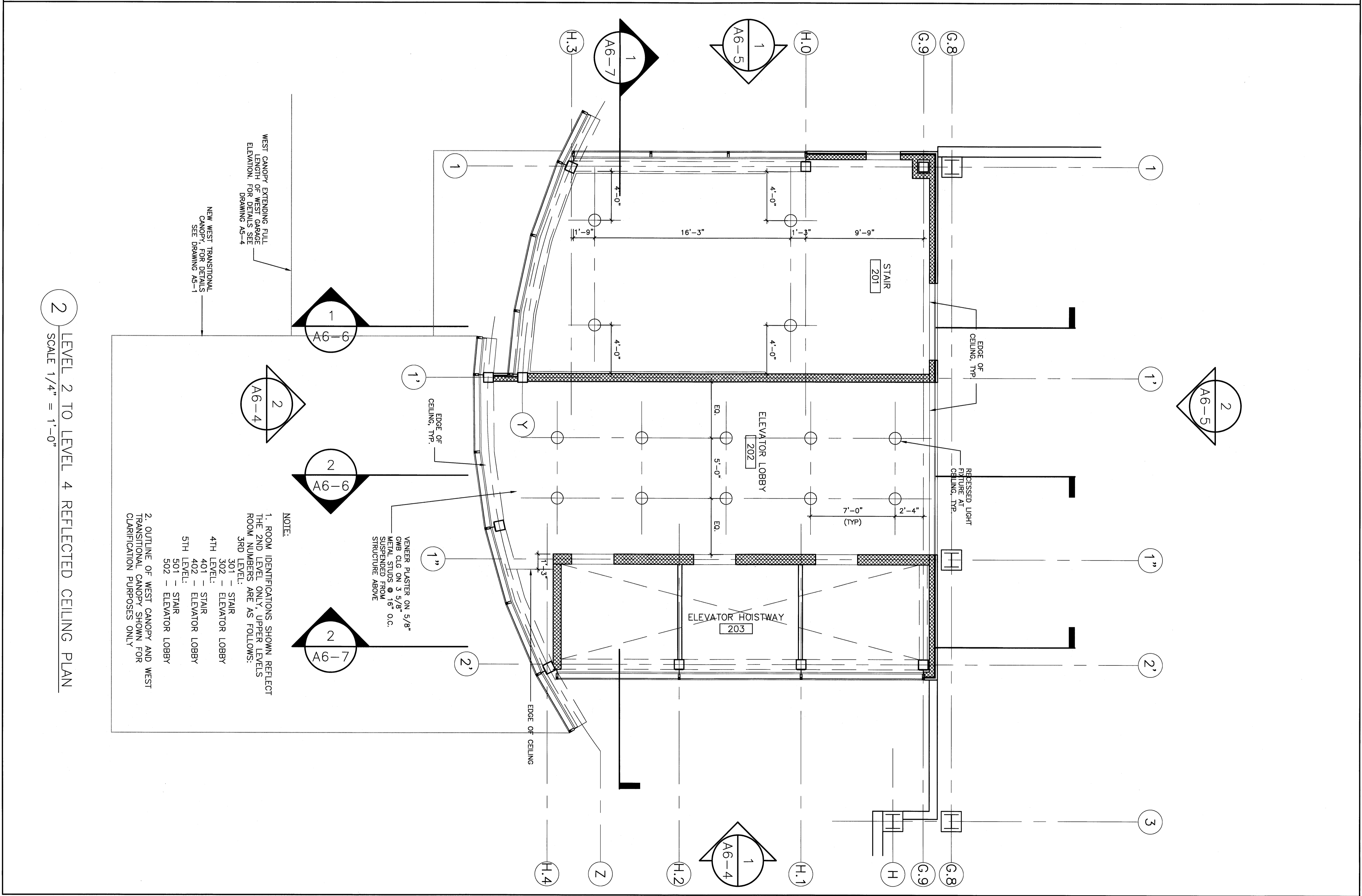
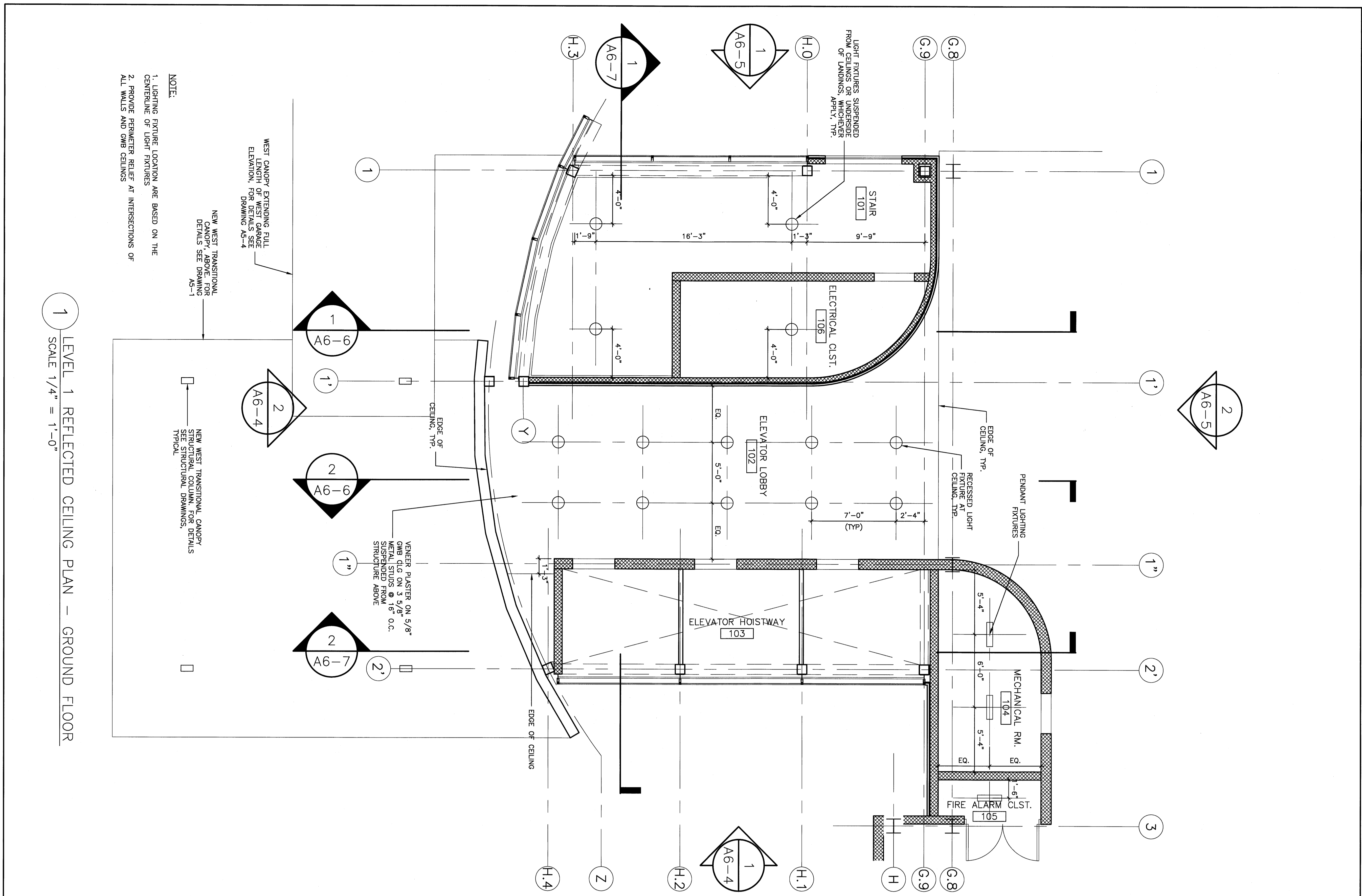
PORTLAND
INTERNATIONAL
JETPORT
PHASE II
PARKING GARAGE
1001 WESTBROOK ST.,
PORTLAND, MAINE

No.	Date	Revision

Scale: 1/4" = 1'-0"

File Name: A6-3.dwg
Drawn By: MK
Checked By: JG
2008 Nov 20 09:08
Date: 2008

STAIR / ELEVATOR TOWER
REFLECTED CEILING PLANS
A6-3



NOTE:
1. LIGHTING FIXTURE LOCATION ARE BASED ON THE CENTERLINE OF LIGHT FIXTURES.
2. PROVIDE PERIMETER RELIEF AT INTERSECTIONS OF ALL WALLS AND GRID CEILINGS.

NOTE:
1. ROOM IDENTIFICATIONS SHOWN REFLECT THE 2ND LEVEL ONLY. UPPER LEVELS ROOM NUMBERS ARE AS FOLLOWS:
3RD LEVEL: STAIR 300 - ELEVATOR LOBBY
4TH LEVEL: STAIR 401 - STAIR
402 - ELEVATOR LOBBY
5TH LEVEL: STAIR 501 - STAIR
502 - ELEVATOR LOBBY

2. OUTLINE OF WEST CANOPY AND WEST TRANSITIONAL CANOPY SHOWN FOR CLARIFICATION PURPOSES ONLY.