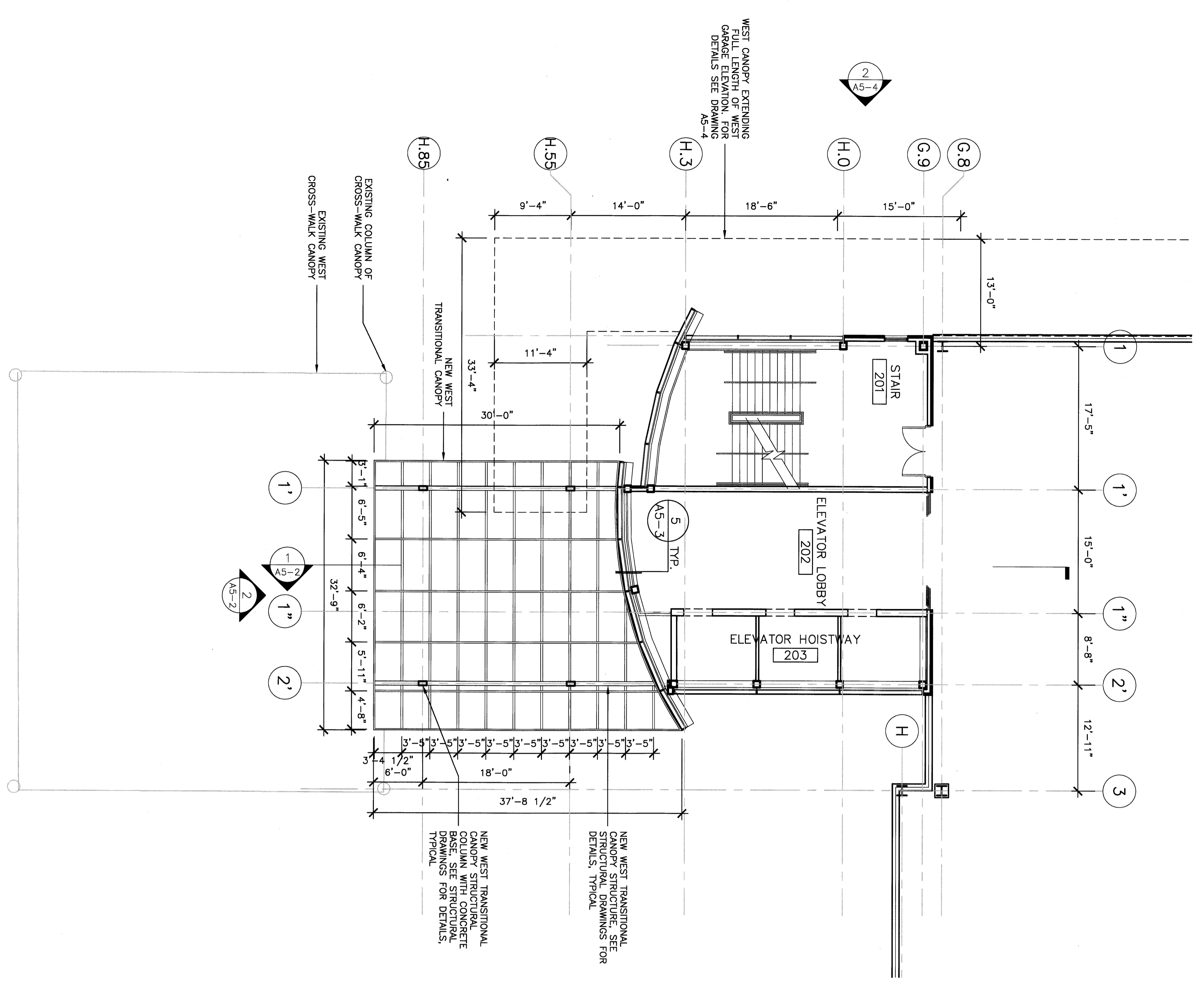
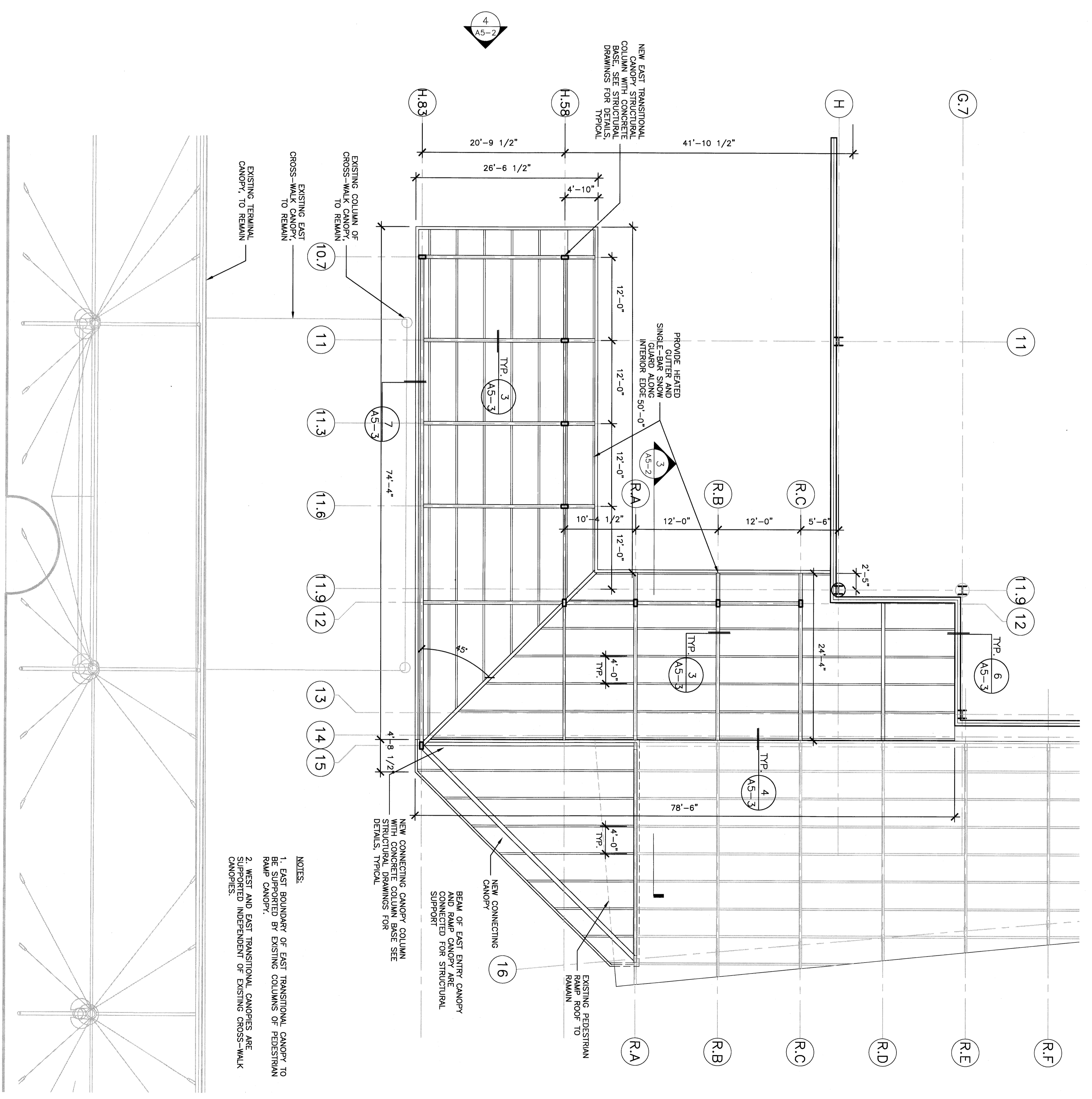


1/16"=1' 5 0 10 20 30 40ft 1/8"=1' 5 0 5 10 15 20ft 1/4"=1' 2 0 2 4 6 8 10ft 1/2"=1' 1 0 1 2 3 4 5ft 3/4"=1' 1 0 1 2 3ft 1"=1' 0 1 1 2ft 1 1/2"=1' 0 2ft 3"=1' 0 2ft 1ft



1 WEST TRANSITIONAL CANOPY REFLECTED CEILING PLAN
1/8"=1'-0"



2 EAST TRANSITIONAL CANOPY REFLECTED CEILING PLAN
1/8"=1'-0"

- NOTES:
1. EAST BOUNDARY OF EAST TRANSITIONAL CANOPY TO BE SUPPORTED BY EXISTING COLUMNS OF RAMP CANOPY.
 2. WEST AND EAST TRANSITIONAL CANOPIES ARE SUPPORTED INDEPENDENT OF EXISTING CROSS-WALK CANOPIES.

CONFIRMED SET FOR FIELD USE

CITY OF PORTLAND
PORTLAND, MAINE

DEPARTMENT OF WATERFRONT AND TRANSPORTATION

PORTLAND INTERNATIONAL JETPORT
PHASE II
PARKING GARAGE
1001 WESTBROOK ST.,
PORTLAND, MAINE

**DOMENECH
HICKS &
KROCKMALNIC
ARCHITECTS**

155 Massachusetts Ave.
Boston, MA 02115
617-267-5400
Fax 617-267-1990

DATE: 2/28/08

SCALE: 1/8"=1'-0"

TITLE: TRANSITIONAL CANOPIES REFLECTED CEILING PLANS

No.	Date	Revision

PREPARED BY: A5-1
 DRAWN BY: A5-1
 CHECKED BY: A5-1
 DATE: 2/28/08

If this sheet is less than 30"x42" in size, it has been reduced. Graphic scales must be adjusted accordingly.