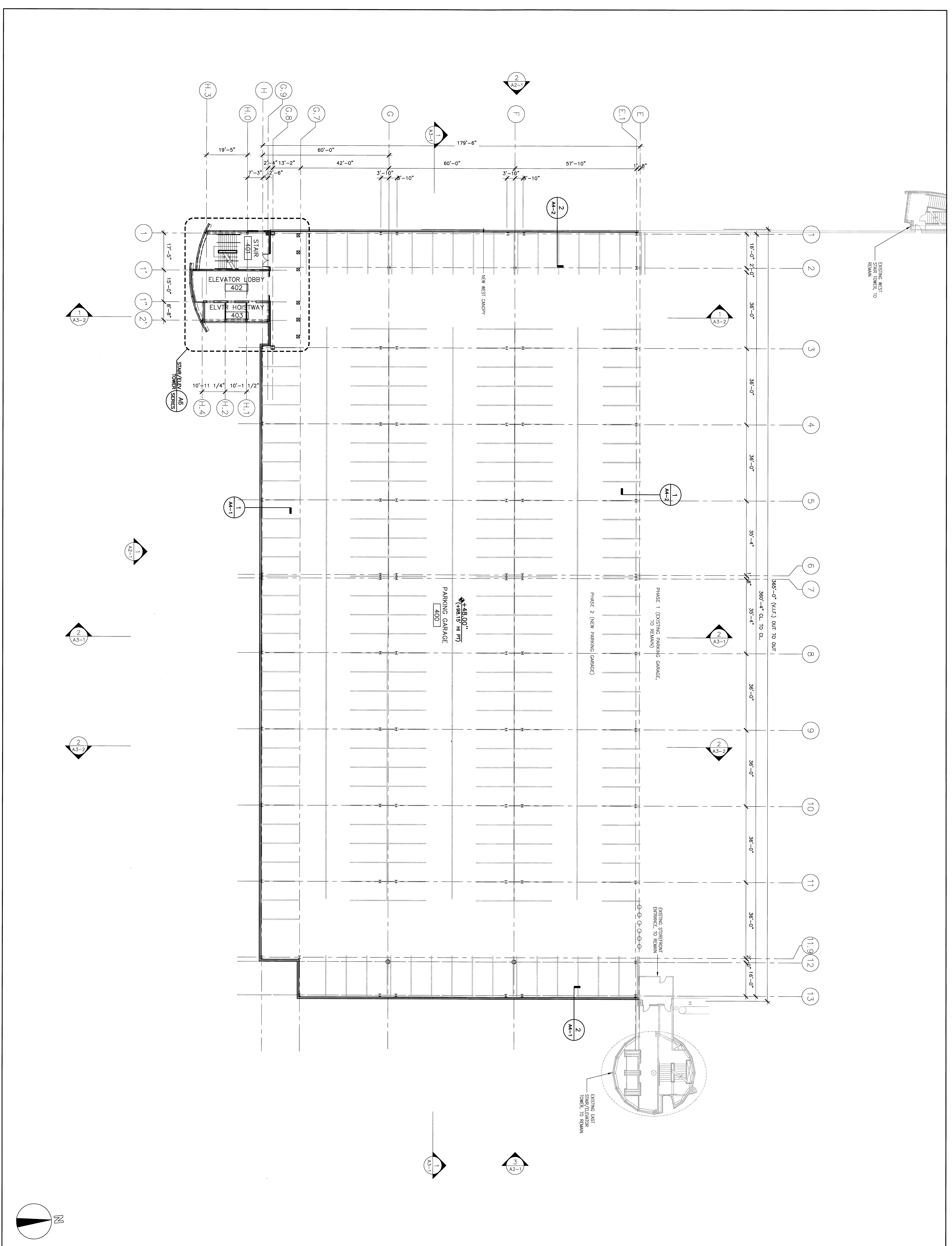


EXISTING WEST STAIR/ELEVATOR TO REMAIN

EXISTING EAST STAIR/ELEVATOR TOWER TO REMAIN



**DOMENECH HICKS & KROCKMALNIC ARCHITECTS**  
 155 Massachusetts Ave.  
 Boston, MA 02115  
 617-267-6408  
 Fax 617-267-1990

**PWT**  
 PORTLAND INTERNATIONAL JETPORT  
 PHASE II  
 PARKING GARAGE  
 1001 WESTBROOK ST.,  
 PORTLAND, MAINE

CONFORMED SET  
 FOR FIELD USE

CITY OF PORTLAND PORTLAND, MAINE DEPARTMENT OF WATERFRONT AND TRANSPORTATION	
No. _____ Date _____ Revision _____	
TITLE <b>LEVEL 4          FLOOR PLAN</b>	
Scale: 1/8"=1'-0" Date: 05/20/08	Job No. 08080 Drawing No. <b>A1-4</b>

If this sheet is less than 30"x42" in size, it has been reduced accordingly. Graphic scales must be adjusted accordingly.