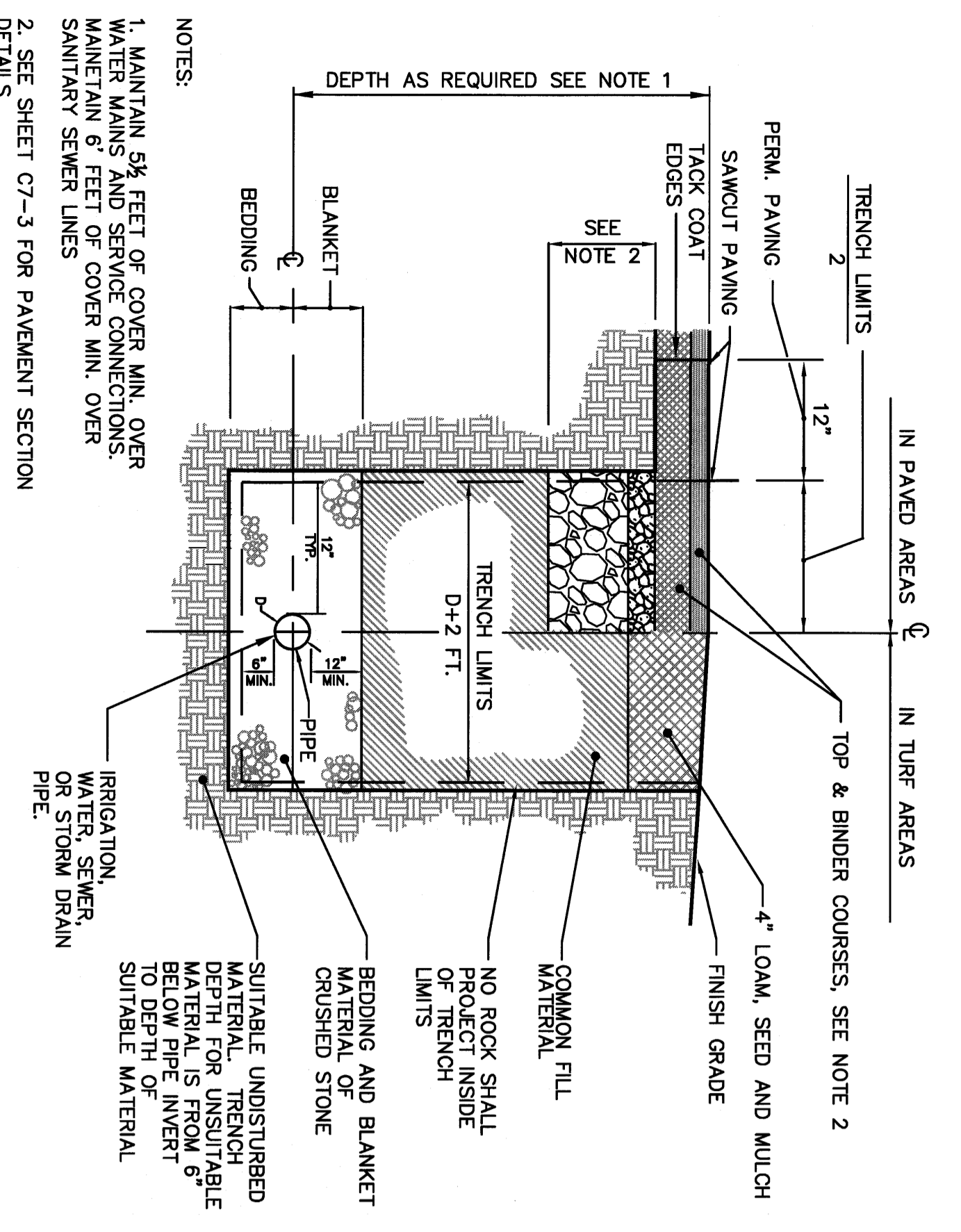
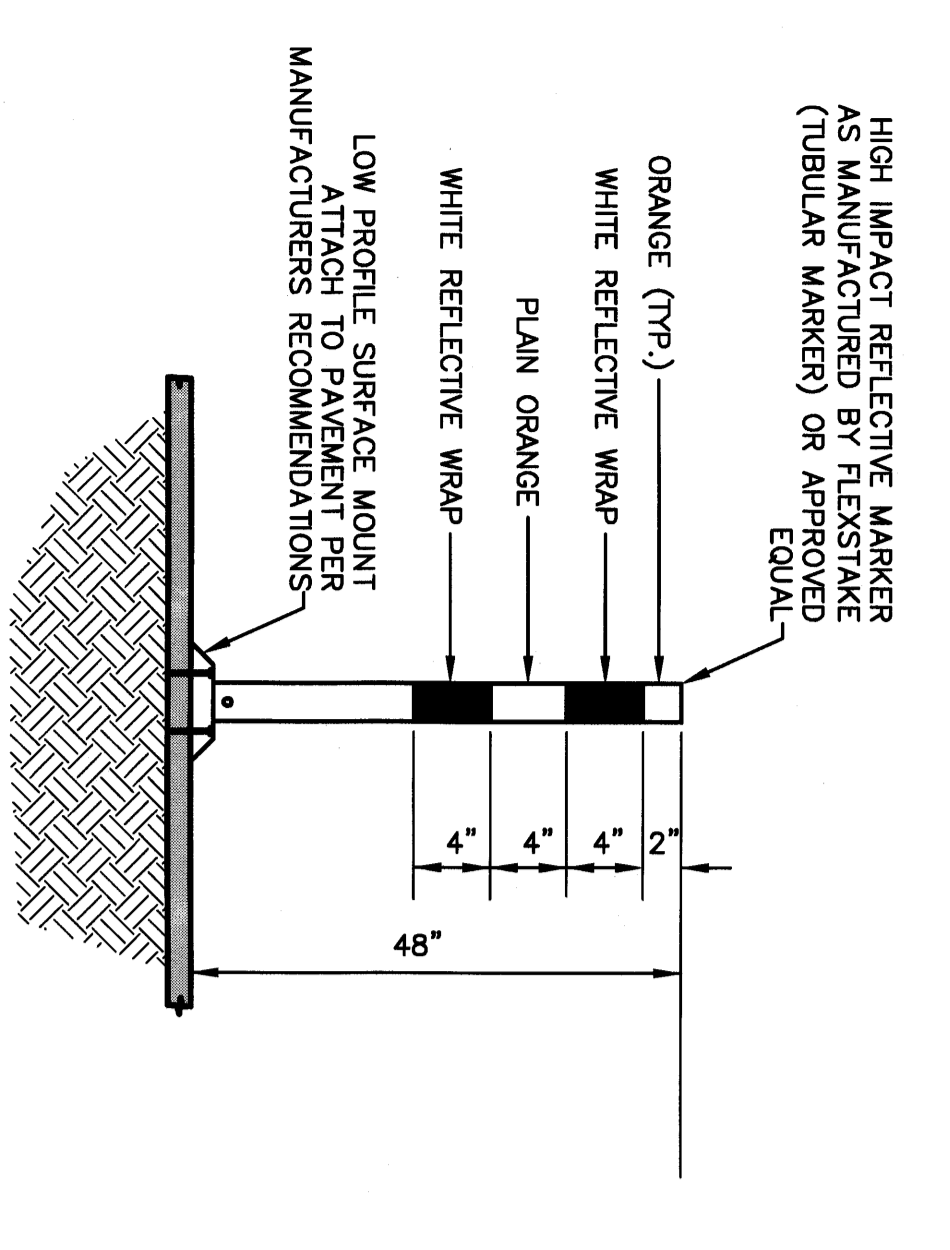


1/8"=1' 0 10 20 30 40ft 1/8"=1' 0 5 10 15 20ft 1/4"=1' 0 2 4 6 8 10ft 1/2"=1' 0 1 2 3 4 5ft 3/4"=1' 0 1 2 3ft 1"=1' 0 1 2 3ft 1 2ft 1 1/2"=1' 0 1 2 3ft 3"=1' 0 1ft

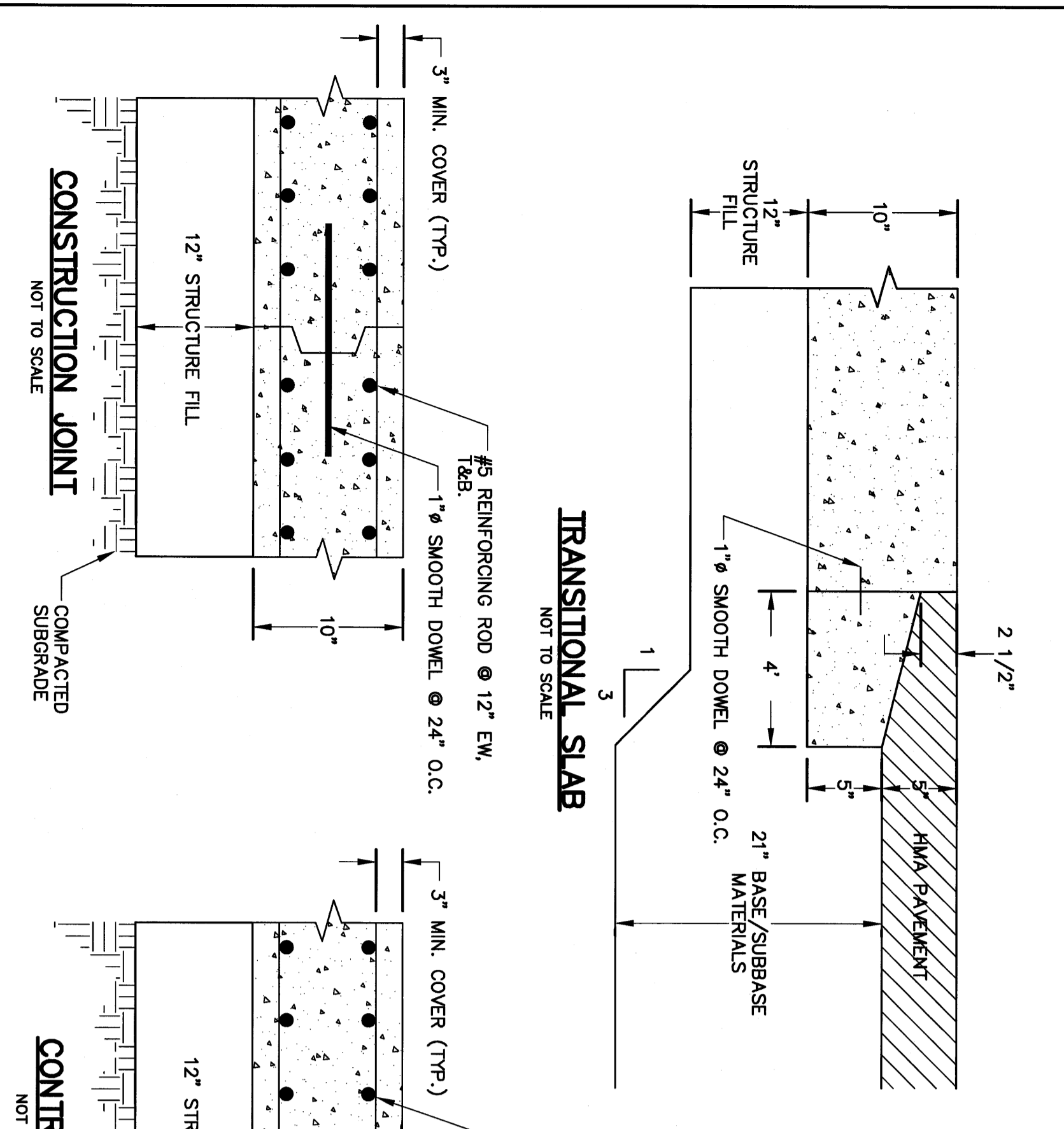


NOTES:  
 1. MAINTAIN 5% FEET OF COVER MIN. OVER WATER MAINS AND SERVICE CONNECTIONS.  
 2. SEE SHEET C7-3 FOR PAVEMENT SECTION DETAILS.

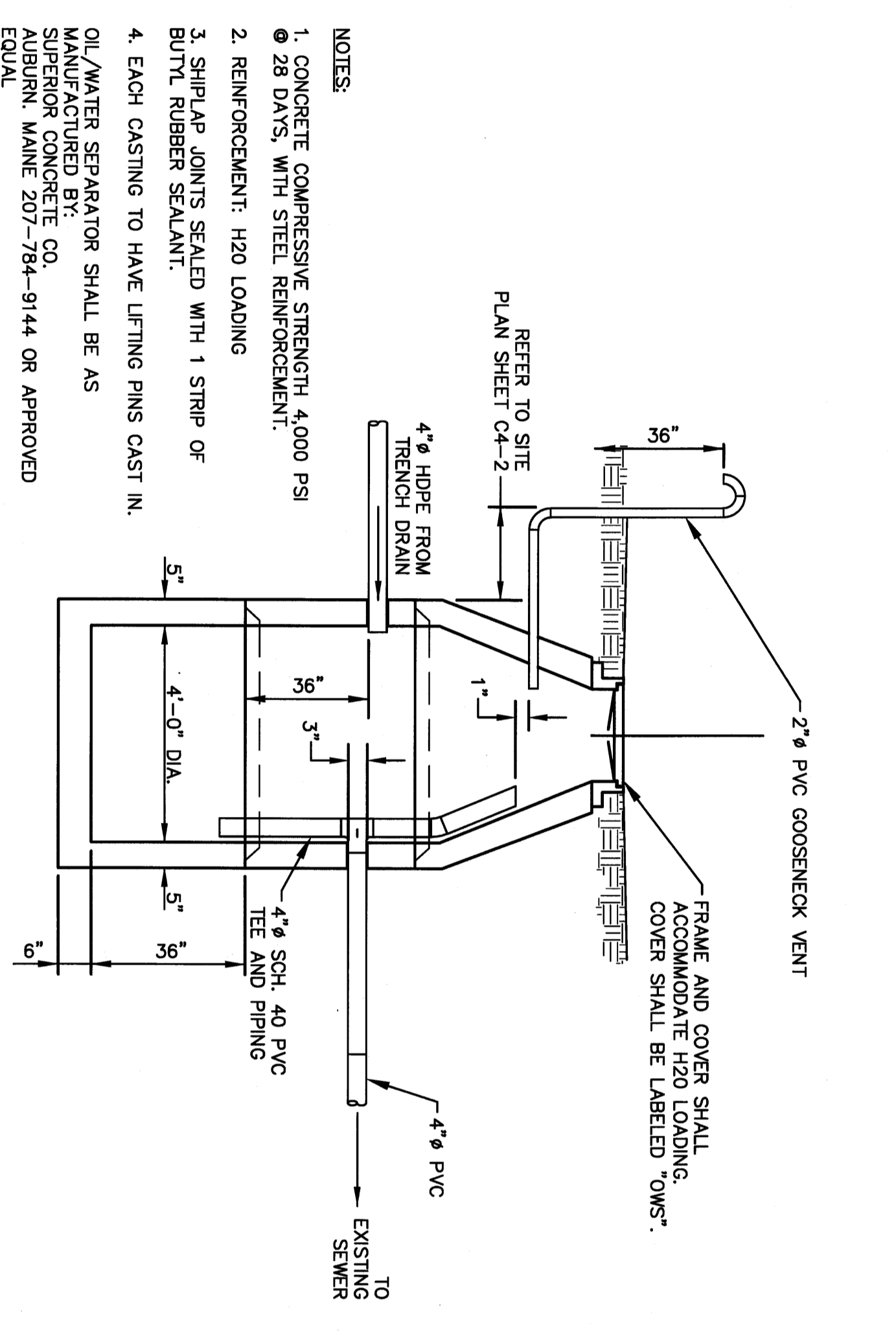
TRENCH SECTION  
NOT TO SCALE  
C7-4 1



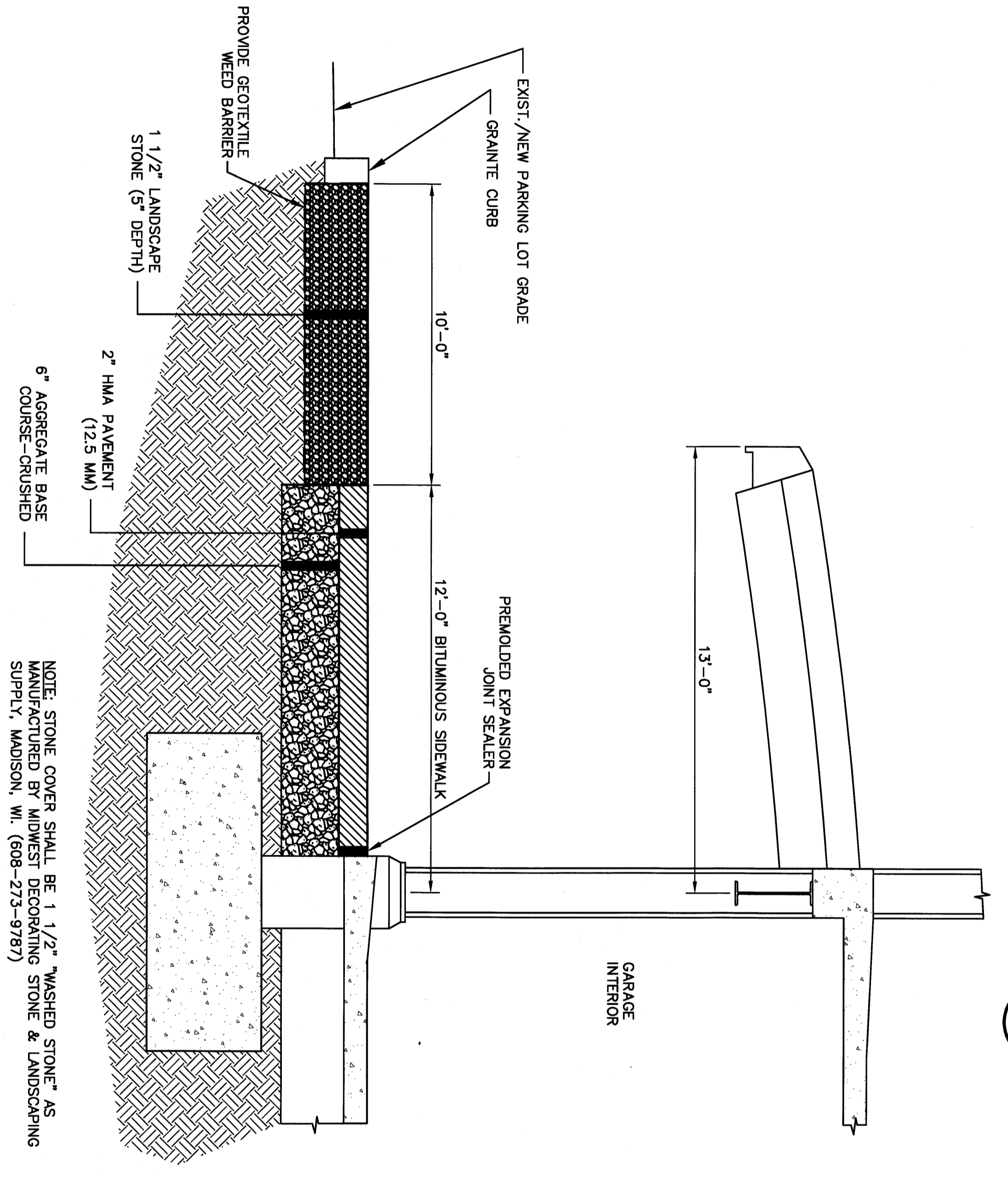
HIGH IMPACT REFLECTIVE MARKER DETAIL  
NOT TO SCALE  
C7-4 2



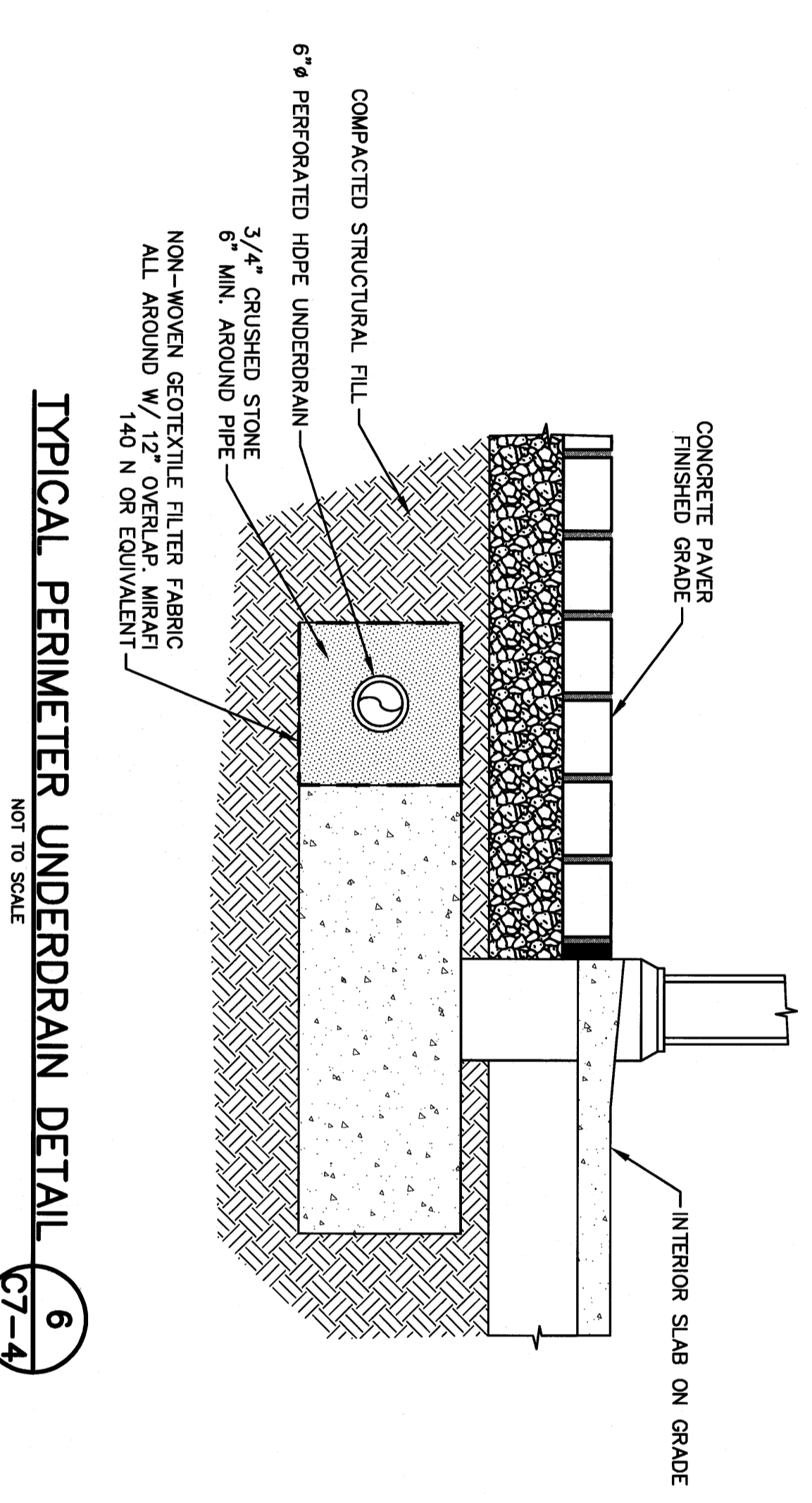
CONCRETE HARD STAND DETAILS  
NOT TO SCALE  
C7-4 3



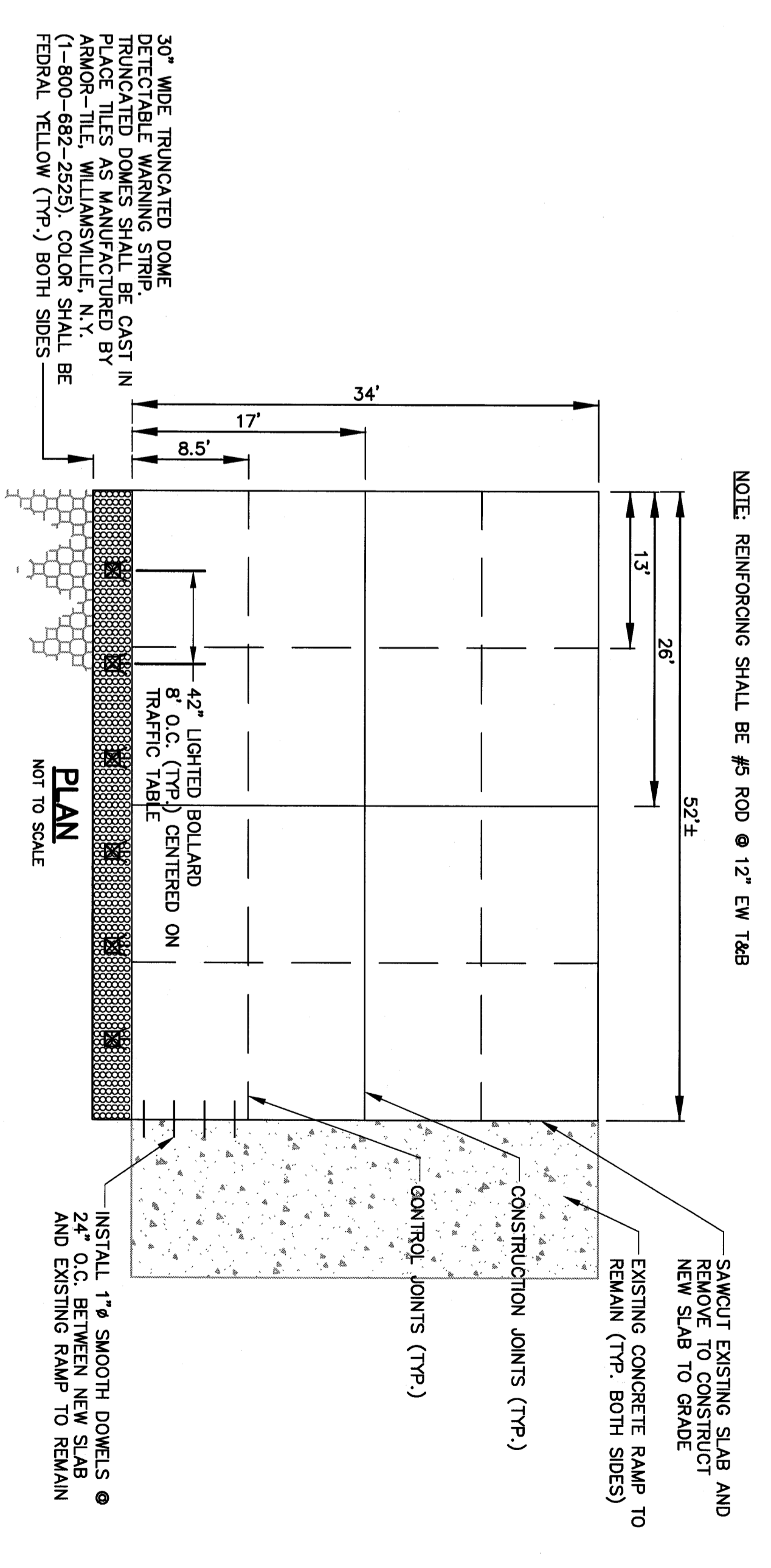
TYP. PRECAST OIL/WATER SEPARATOR DETAIL  
NOT TO SCALE  
C7-4 4



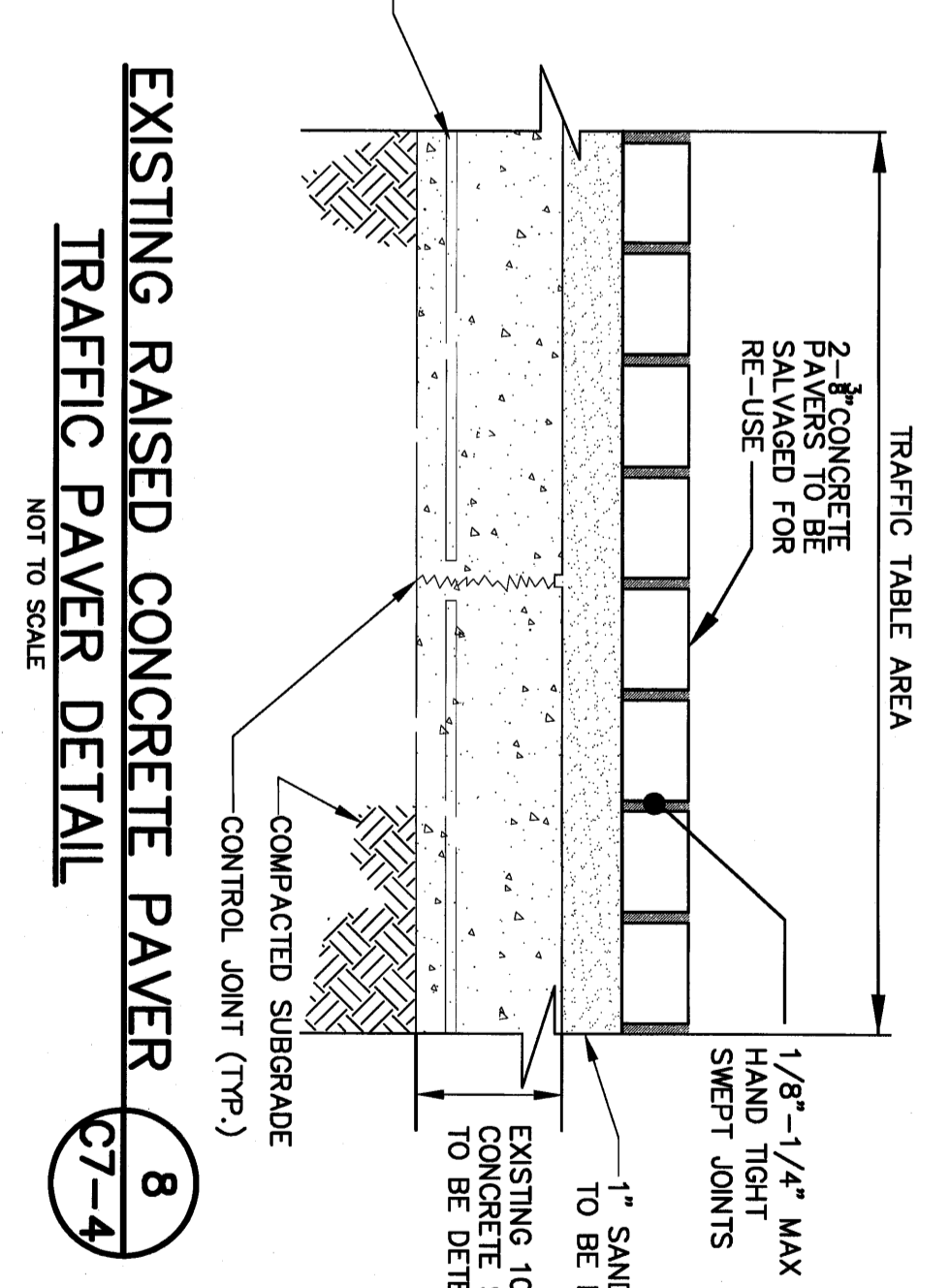
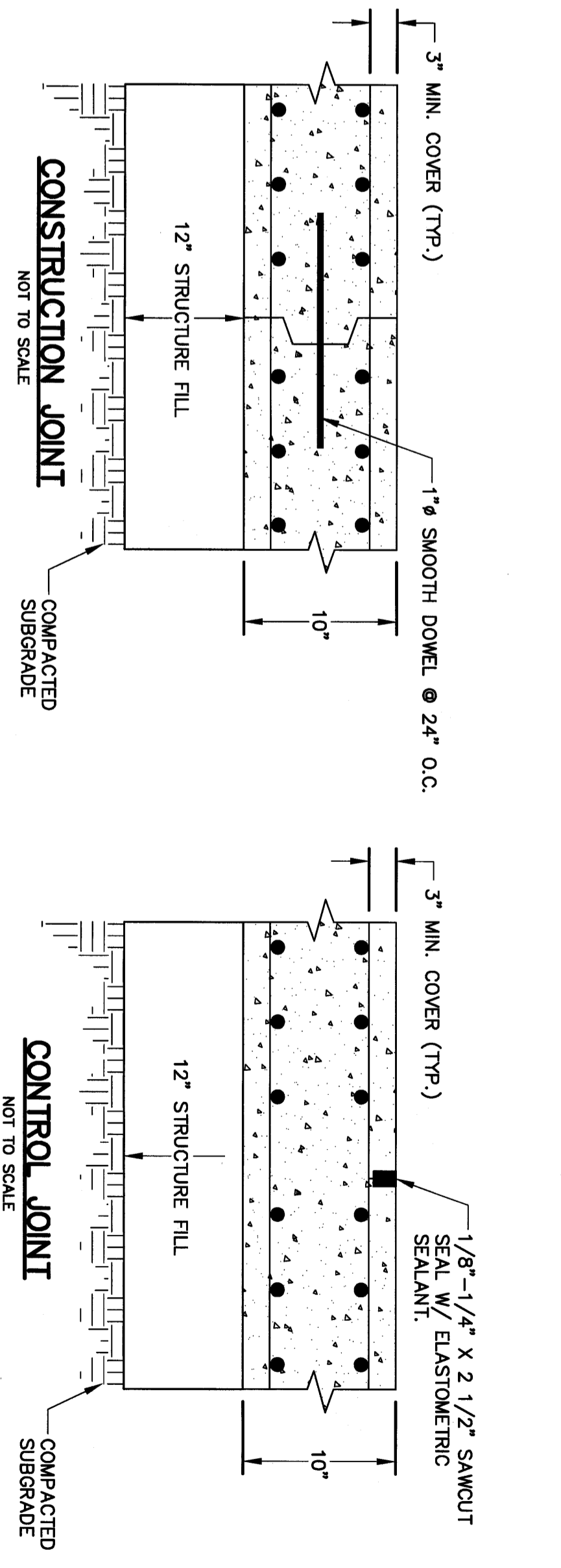
BITUMINOUS SIDEWALK TYPICAL SECTION  
NOT TO SCALE  
C7-4 5



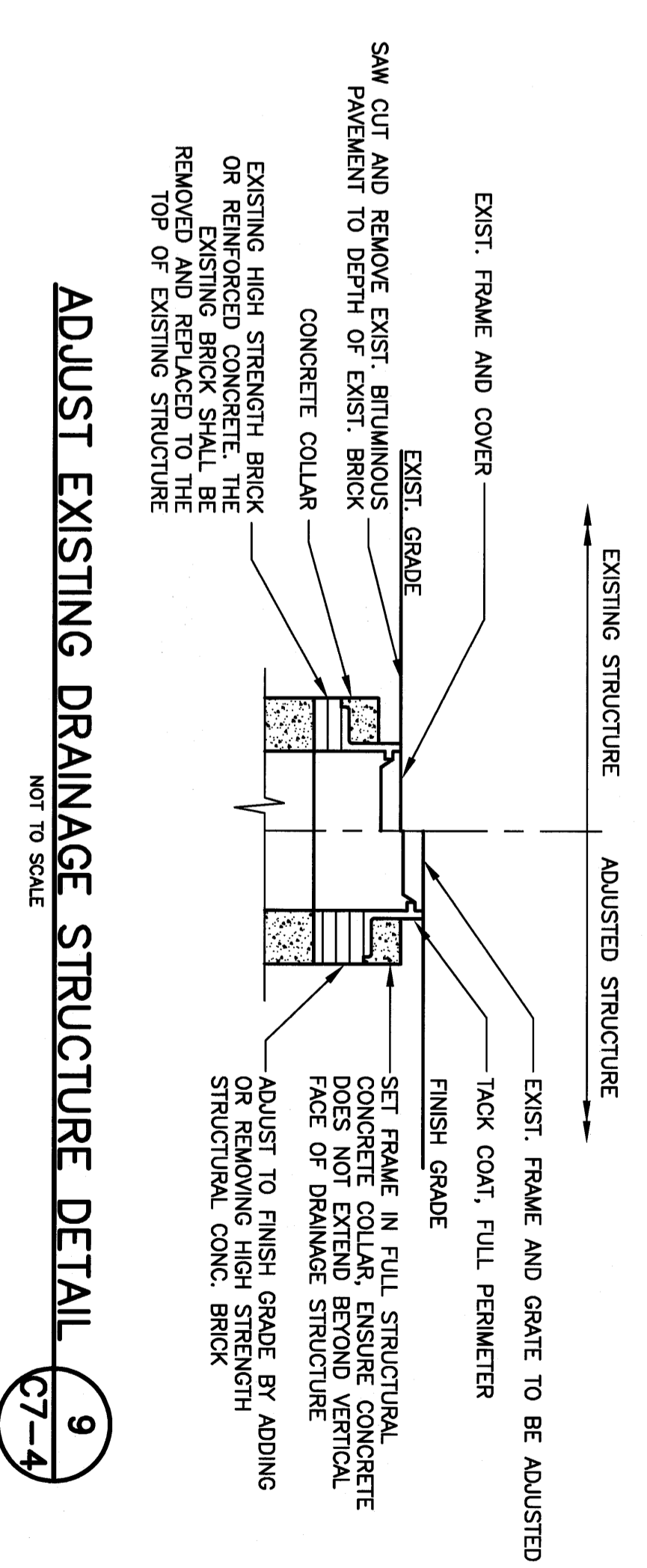
TYPICAL PERIMETER UNDERDRAIN DETAIL  
NOT TO SCALE  
C7-4 6



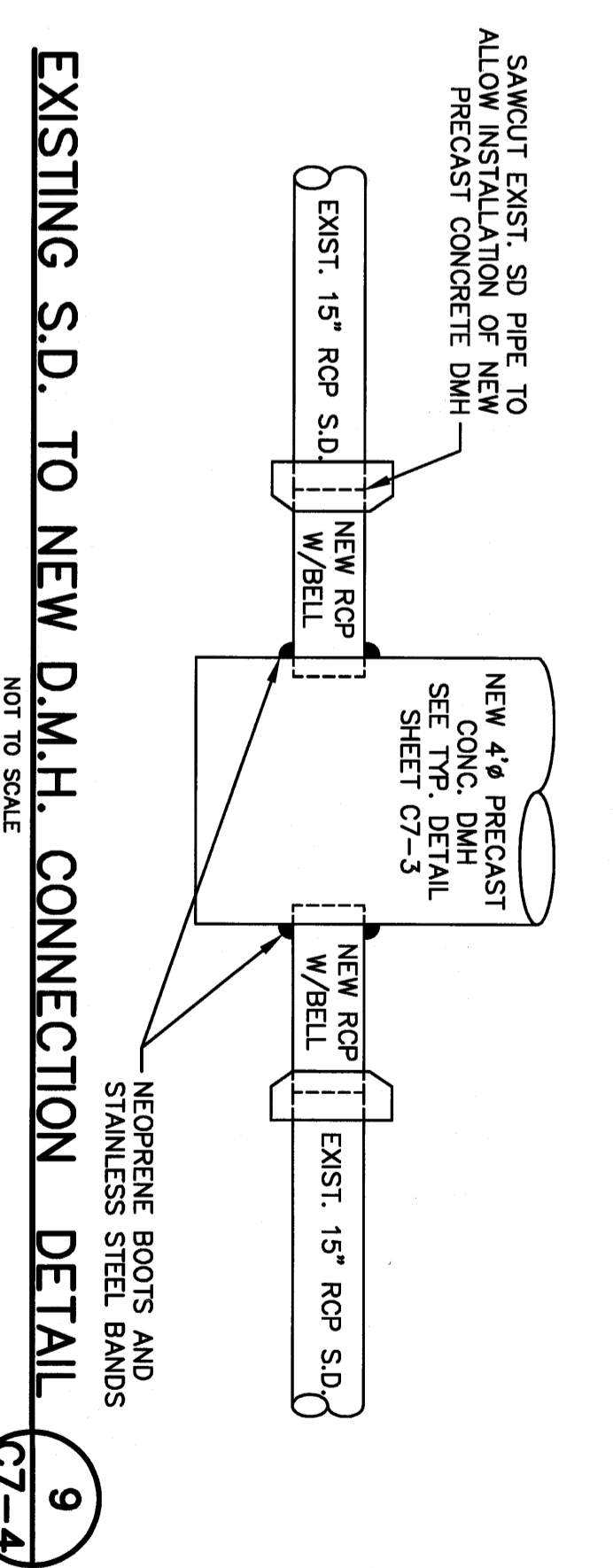
EXISTING RAISED CONCRETE PAVEMENT TRAFFIC TABLE DETAIL  
NOT TO SCALE  
C7-4 7



EXISTING RAISED CONCRETE PAVEMENT TRAFFIC PAYER DETAIL  
NOT TO SCALE  
C7-4 8



ADJUST EXISTING DRAINAGE STRUCTURE DETAIL  
NOT TO SCALE  
C7-4 9



EXISTING S.D. TO NEW D.M.H. CONNECTION DETAIL  
NOT TO SCALE  
C7-4 9

<p style="text-align: right;">155 Massachusetts Ave. Boston, MA 02115 617-267-5400 Fax: 617-267-1990</p> <p style="text-align: center;"><b>DOMEKCH HICKS &amp; KROCKMALNIC ARCHITECTS</b></p>	<p style="text-align: center;"><b>Stantec</b></p> <p style="text-align: center;">Stantec Consulting Services Inc. 22 Free Street, Suite 205 04101-3408 U.S.A. Tel. 207.775.3211 Fax. 207.775.6434 www.stantec.com</p>	<p>CITY OF PORTLAND PORTLAND, MAINE DEPARTMENT OF WATERFRONT AND TRANSPORTATION</p> <p style="text-align: center;"><b>PTMI</b></p> <p>PORTLAND INTERNATIONAL JETPORT PHASE II PARKING GARAGE 1001 WESTBROOK ST., PORTLAND, MAINE</p>	<p>CONFORMED SET FOR FIELD USE</p> <p style="text-align: center;">TYPICAL SECTIONS AND MISC. DETAILS</p> <p style="text-align: center;"><b>C7-4</b></p>
---	---	--	---

If this sheet is less than 30"x42" in size, it has been reduced. Graphic scales must be adjusted accordingly.