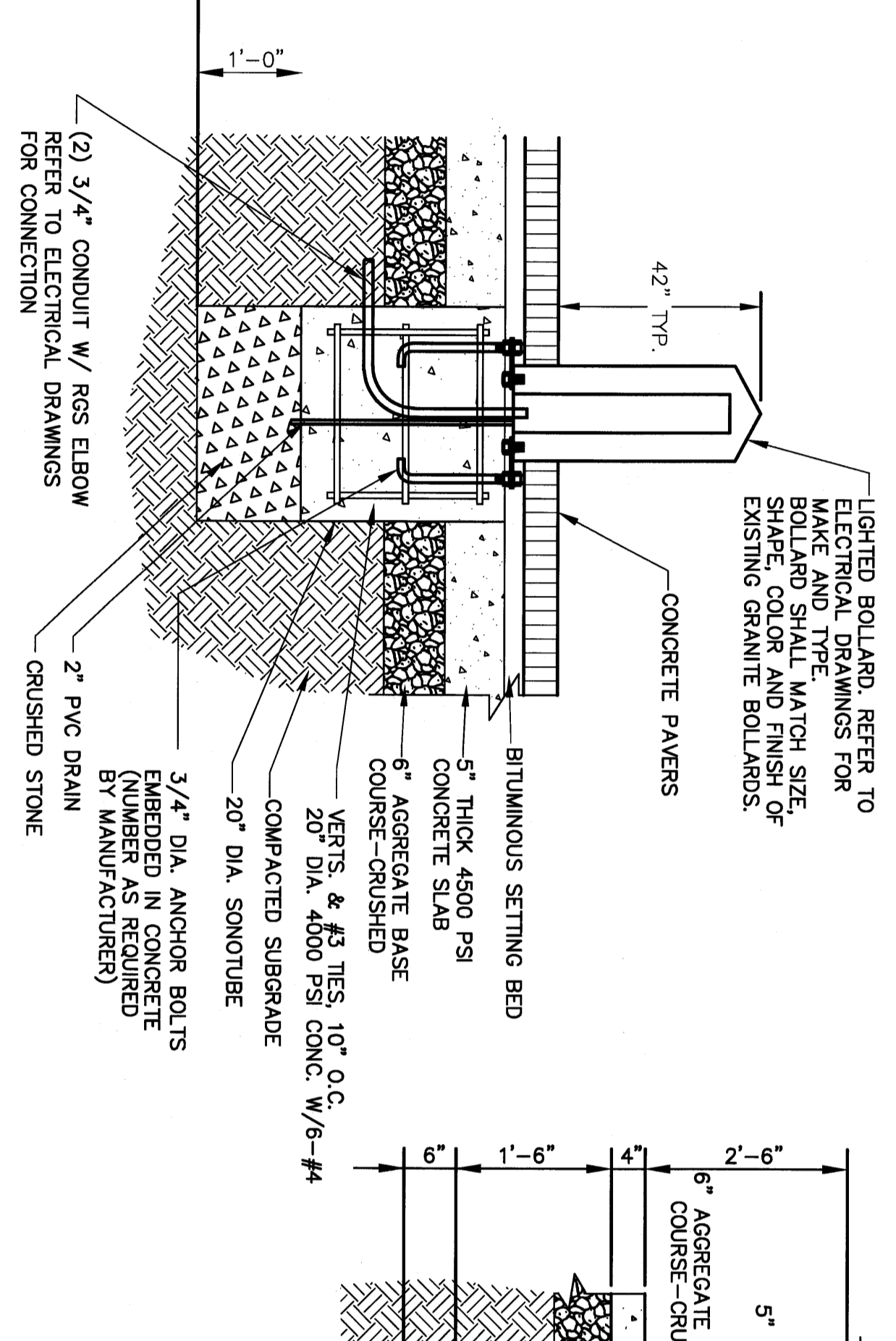


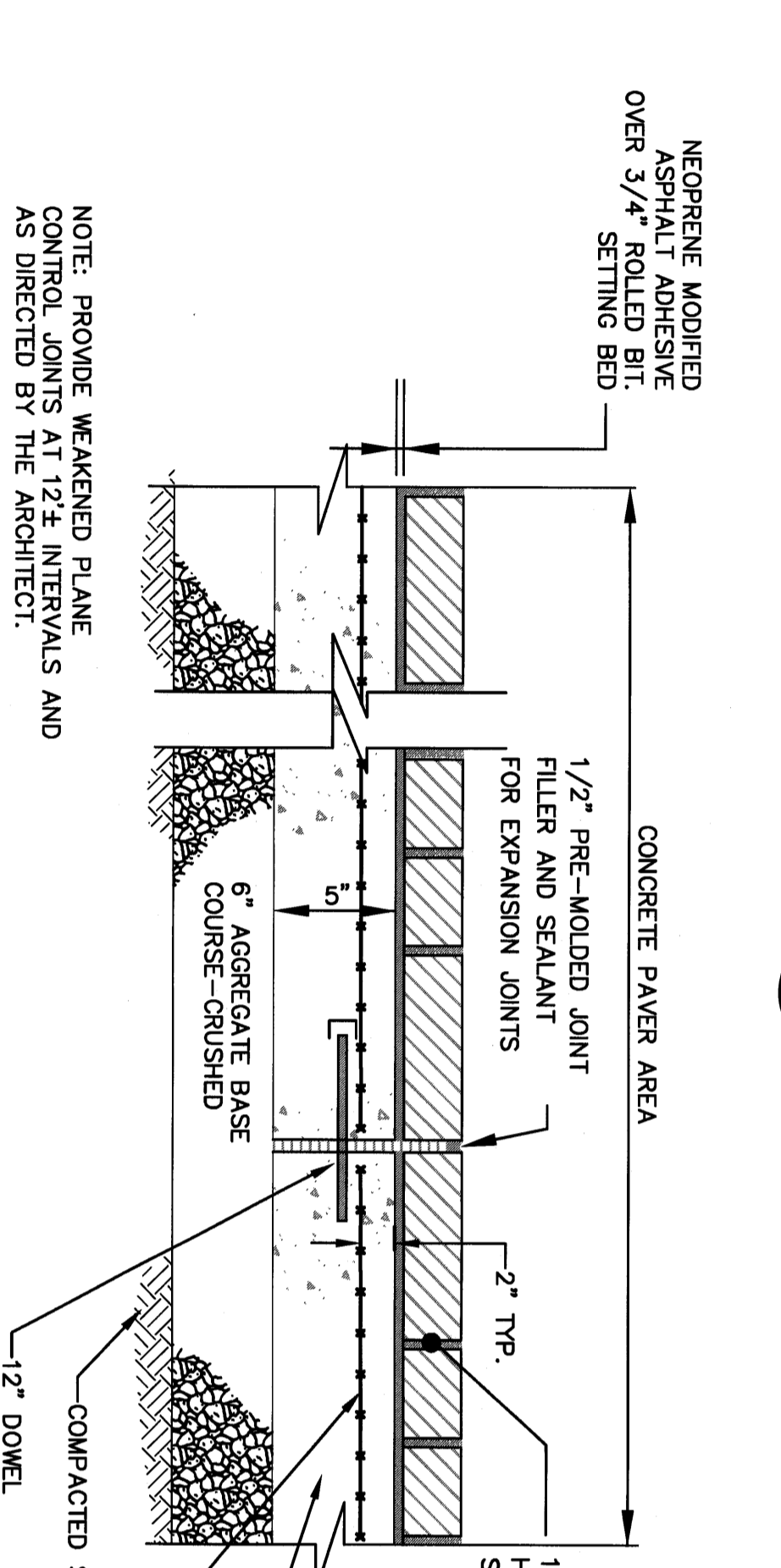
1/8"=1' 5 0 10 20 30 40ft 1/8"=1' 5 0 5 10 15 20ft 1/4"=1' 2 0 2 4 6 8 10ft 1/2"=1' 1 0 1 2 3 4 5ft 3/4"=1' 1 0 1 1 2ft 1"=1' 0 0 1 1 2ft 1 1/2"=1' 0 0 1 1 2ft 3"=1' 0 0 1 1 2ft

If this sheet is less than 30"x42" in size, it has been reduced. Graphic scales must be adjusted accordingly.

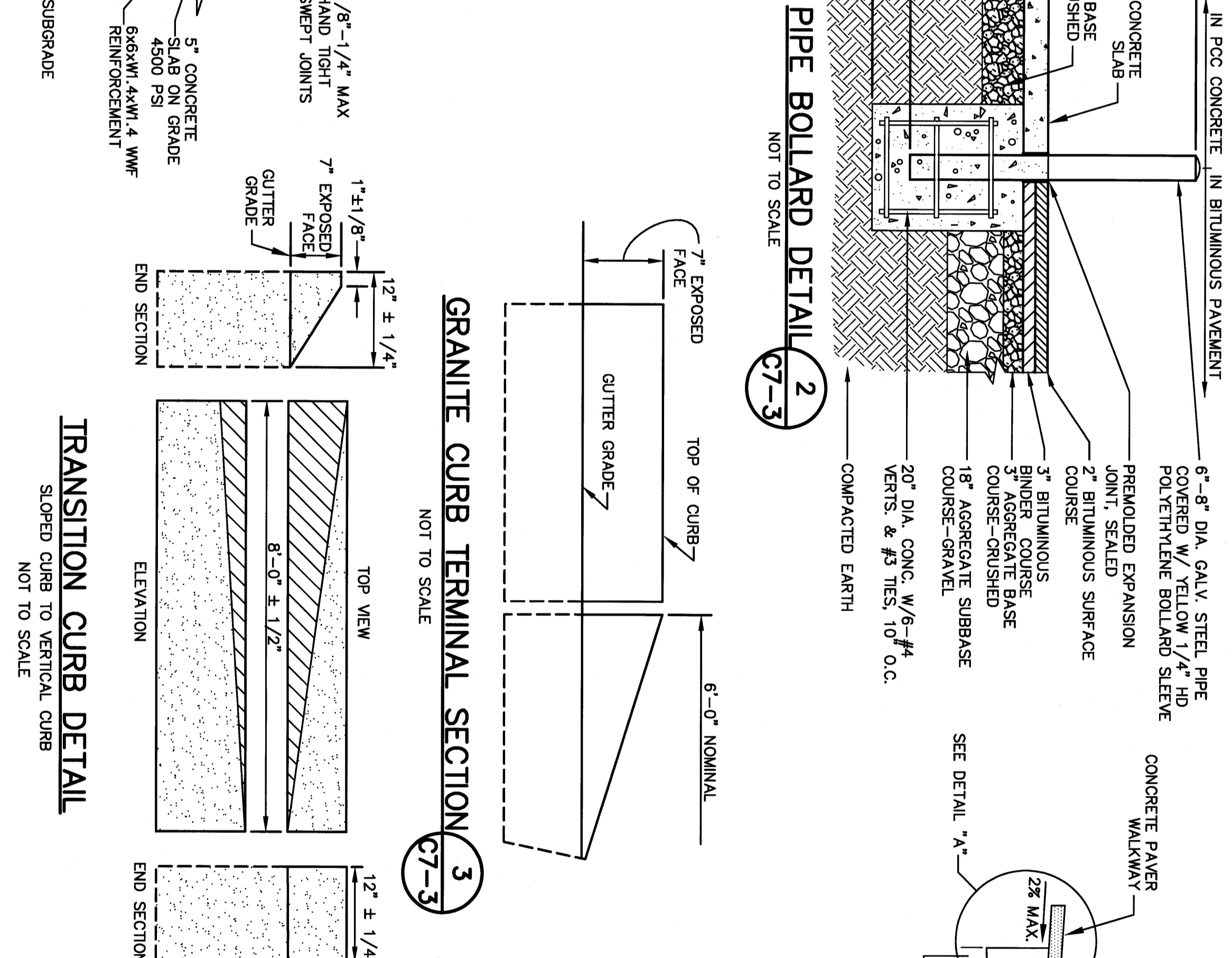
- GENERAL NOTES:**
1. THE PAVEMENT, BASE, AND SUBBASE DEPTHS AS SHOWN ON THE PLANS ARE INTENDED TO BE NOMINAL.
  2. CROWS FOR BOTH NORMAL AND SUPER ELEVATED SECTIONS FOR ALL COURSES OF SUBBASE, BASE AND PAVEMENT SHALL BE STRAIGHT.
  3. PERMANENT PAVED ENTRANCES AND EXITS SHALL BE CONSTRUCTED WITH THE SAME COMPONENTS AND THE SAME THICKNESS AS THE TYPICAL ROADWAY.
  4. THE LOCATION OF THE EXISTING UNDERGROUND UTILITIES AND DRAINAGE SHOWN ON THE PLANS AND CROSS SECTIONS IS APPROXIMATE AND SHALL BE CONFIRMED BY THE CONTRACTOR.
  5. NO EXISTING DRAINAGE SHALL BE ABANDONED, REMOVED OR PLUGGED WITHOUT PRIOR APPROVAL OF THE ARCHITECT.
  6. INLETS AND OUTLETS OF ALL TEMPORARY AND PROPOSED CURBETS SHALL BE REPAIRED UNLESS OTHERWISE NOTED ON THE PLANS OR DIRECTED BY THE ARCHITECT.
  7. ANY NECESSARY CUTTING OF EXISTING PIPES TO FIT IN AREAS OF PROPOSED CATCH BASINS AND MODIFYING EXISTING UNDERGROUND UTILITIES SHALL BE THE RESPONSIBILITY OF THE CONTRACTOR AND WILL BE CONSIDERED INCIDENTAL TO CATCH BASIN INSTALLATION.
  8. ALL PIPES FOR EXISTING PIPES SHALL BE CONSTRUCTED OF MORTAR AND ALLOWED TO SET A MIN. OF 24 HOURS PRIOR TO BACKFILL.
  9. MOST SEEING METHOD NO. 1 SHALL BE UTILIZED ON ALL DISTURBED AREAS EXCEPT AS NOTED ON THE PLANS.
  10. MULCH SHALL BE APPLIED IN ALL SEEDED AREAS.
  11. LOCAL SHALL BE PLACED TO A NOMINAL DEPTH OF 4" UNLESS OTHERWISE NOTED OR DIRECTED BY THE ARCHITECT.
  12. REQUIRED DITCH PROTECTION AND LOCATION FOR EROSION CONTROL MESH AND BRRAP SHALL BE DETERMINED IN THE FIELD BY THE ARCHITECT.
  13. SEE SITE GRADING AND DRAINAGE SHEETS FOR ROADWAY STORM DRAIN AND UNDERDRAIN LOCATIONS.
  14. TACK COAT IS REQUIRED BETWEEN ALL PAVEMENT LIFTS PLACED.



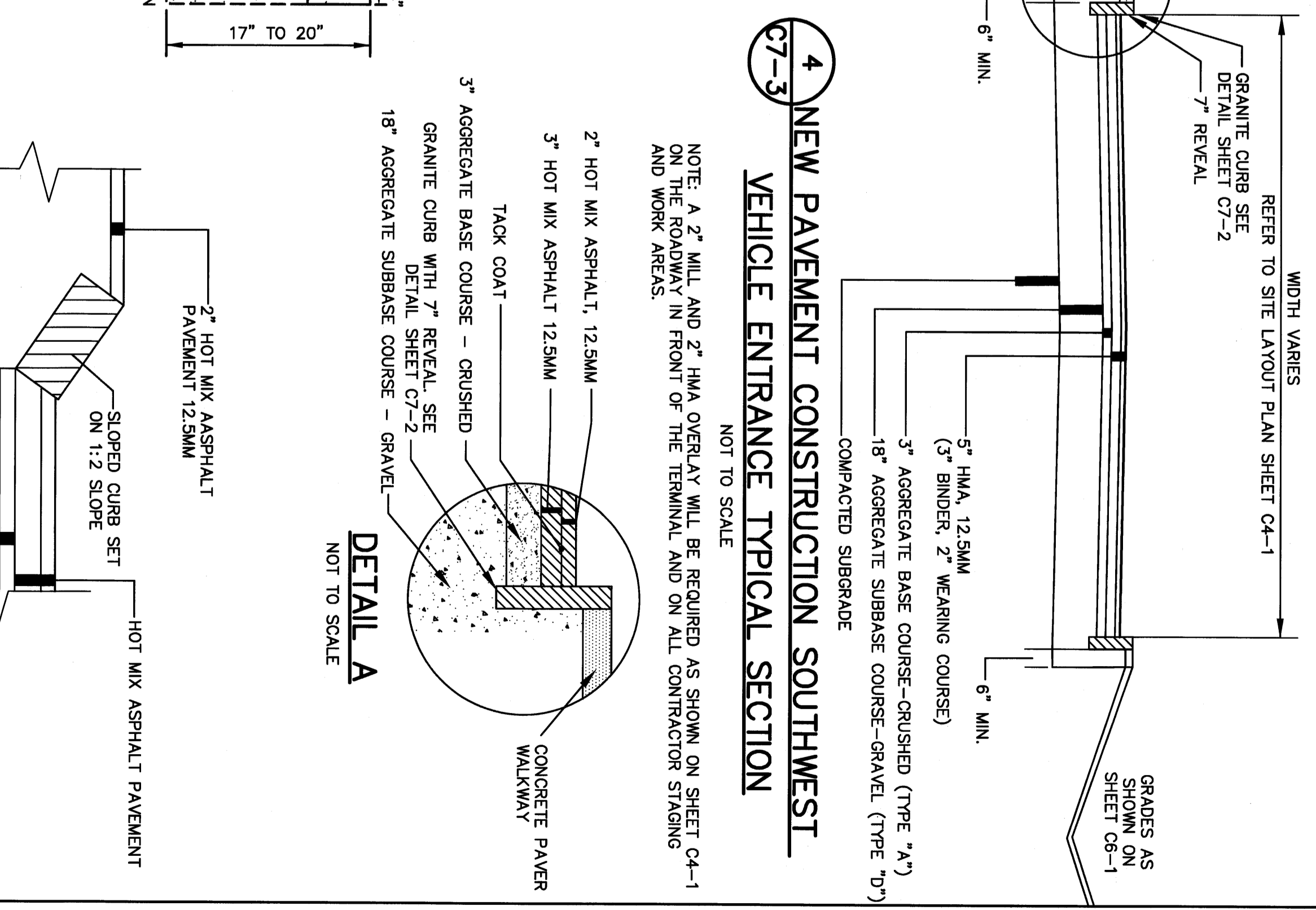
**1 LIGHTED BOLLARD BASE DETAIL**  
NOT TO SCALE



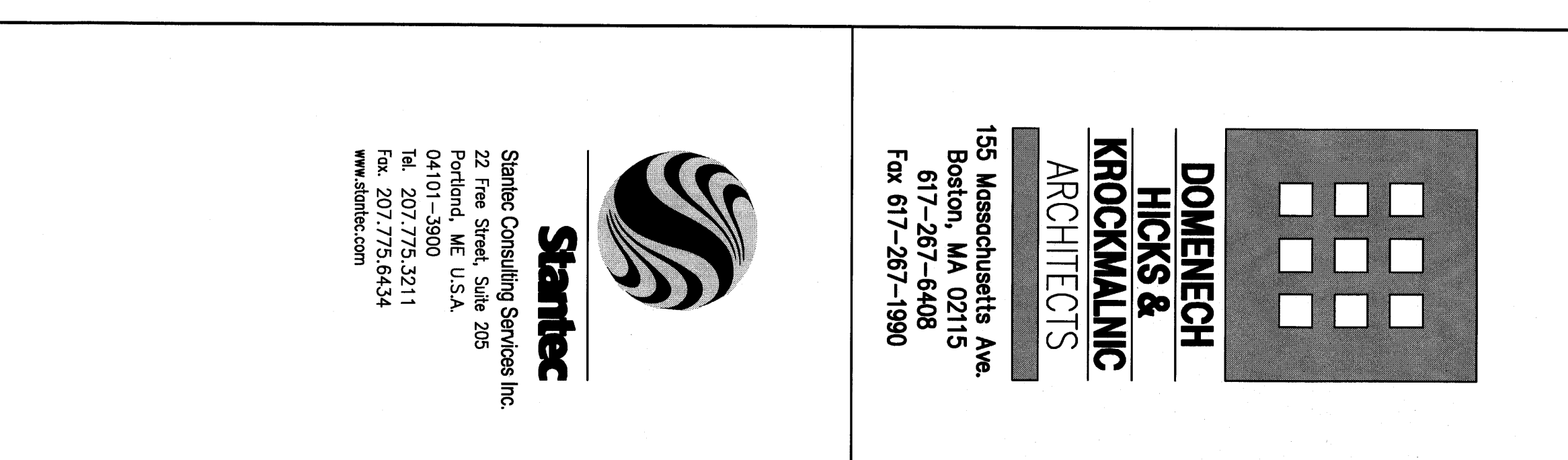
**2 GRANITE CURB TERMINAL SECTION**  
NOT TO SCALE



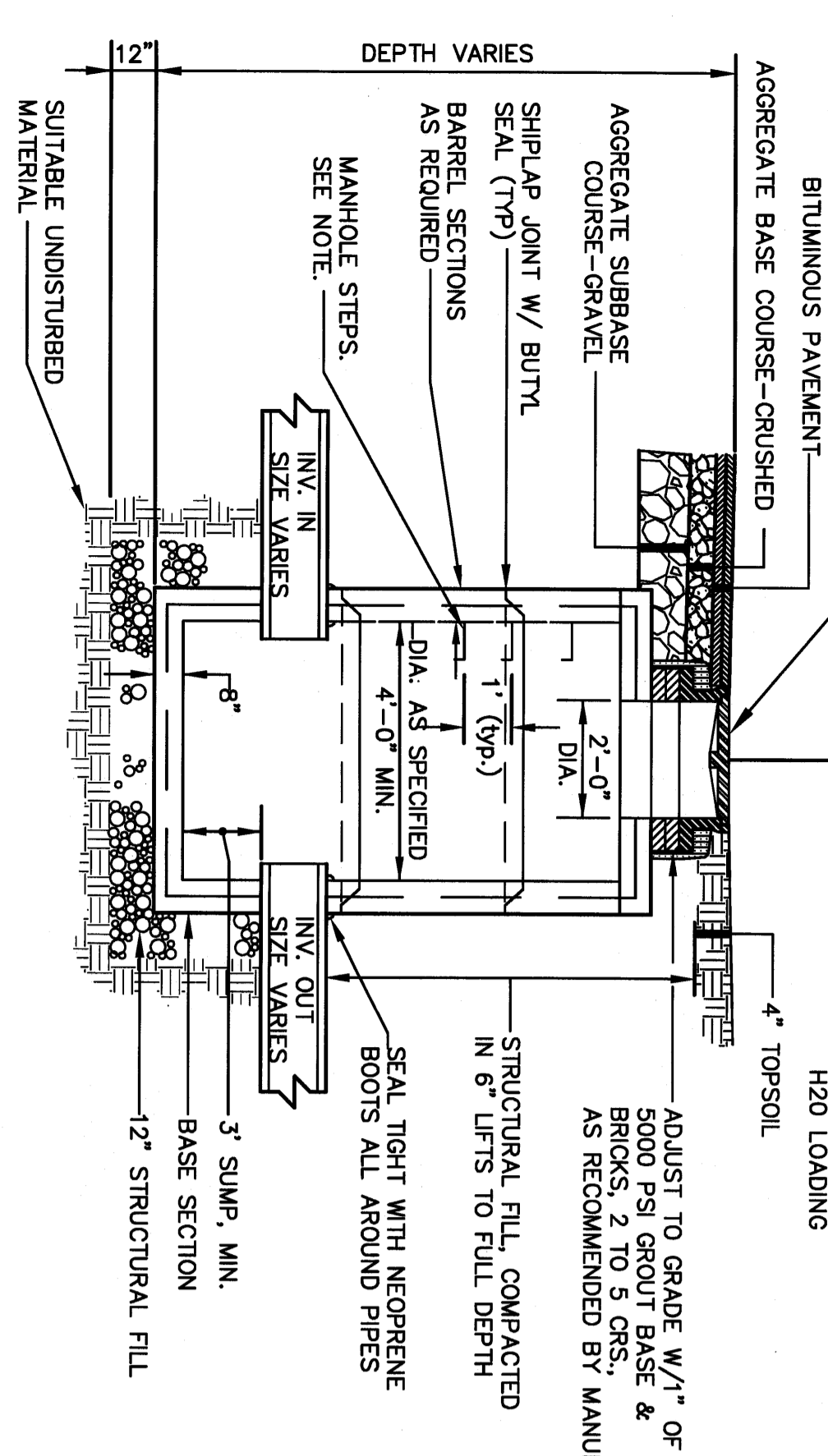
**3 PIPE BOLLARD DETAIL**  
NOT TO SCALE



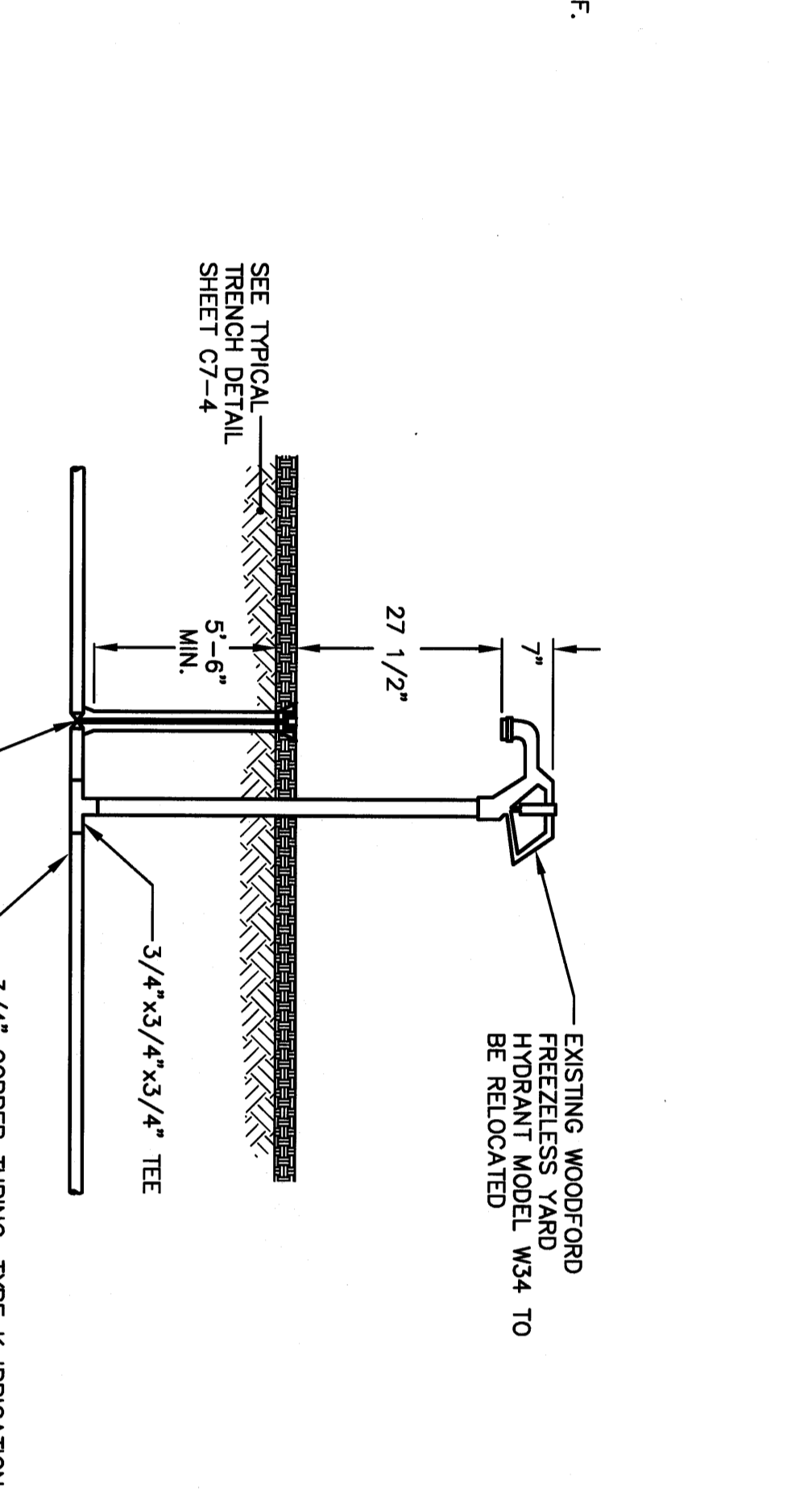
**4 NEW PAVEMENT CONSTRUCTION TYPICAL SECTION**  
NOT TO SCALE



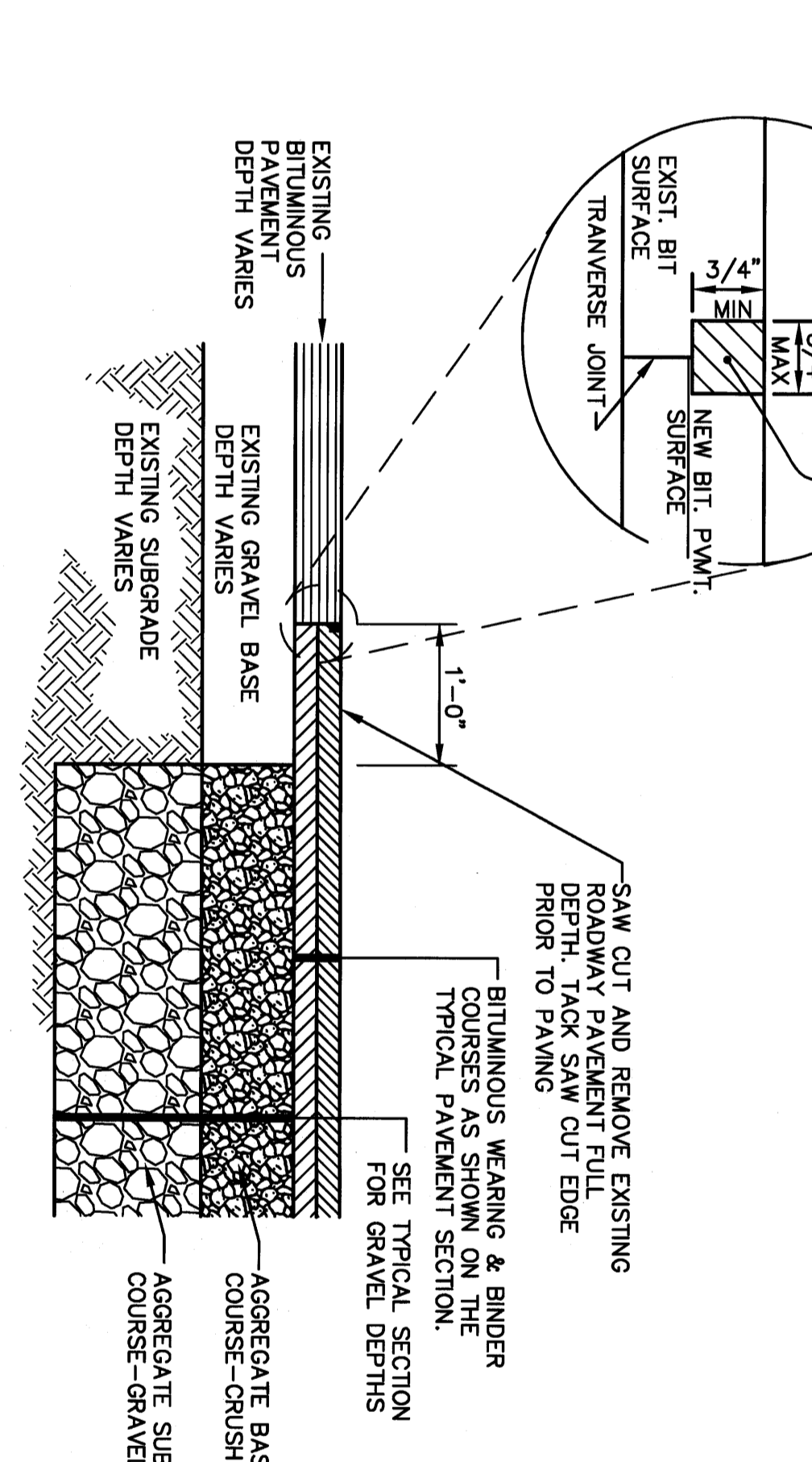
**5 RAISED TRAFFIC ISLAND DETAIL**  
NOT TO SCALE



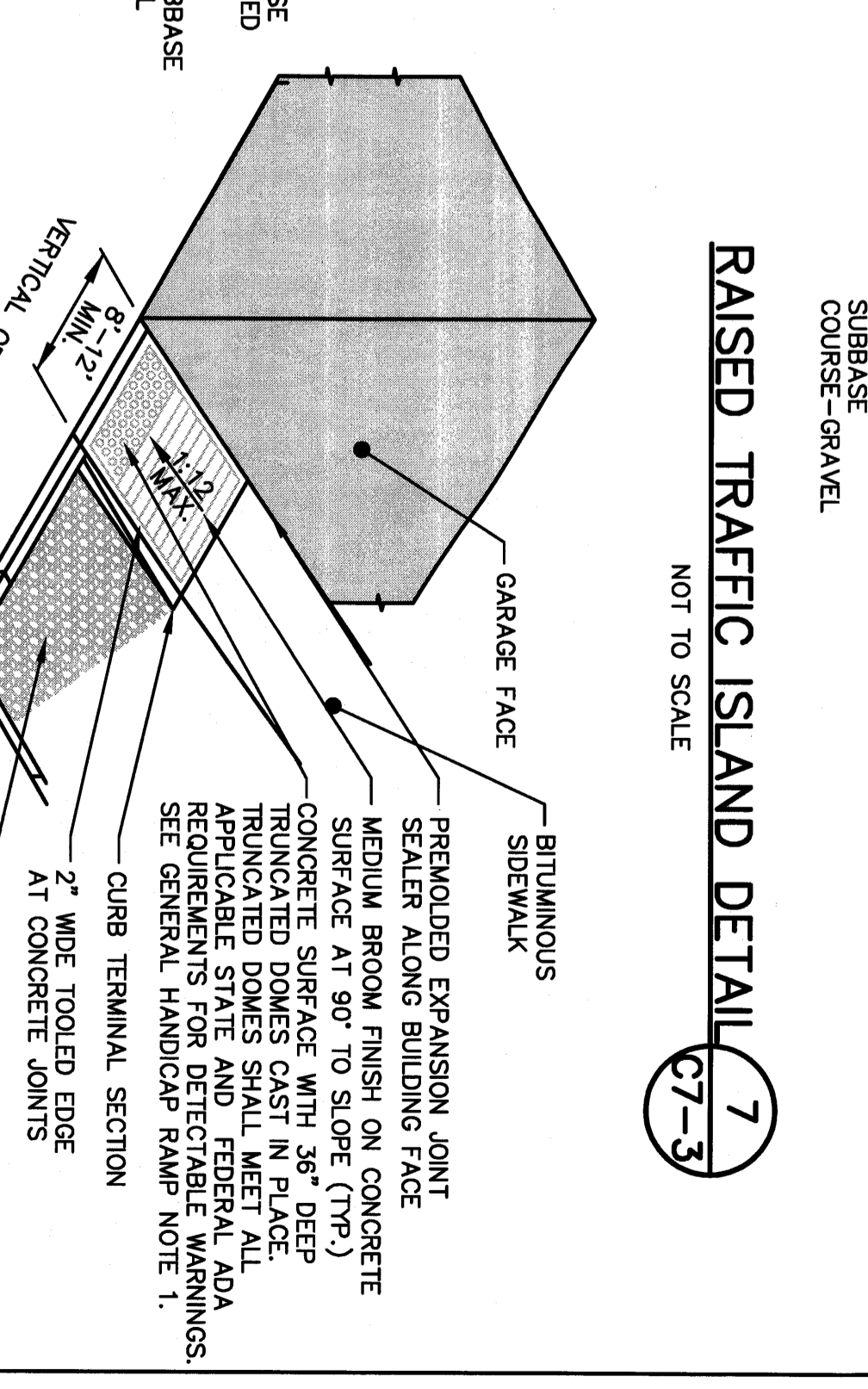
**6 TYPICAL SOLID STORMDRAIN TRENCH DETAIL**  
NOT TO SCALE



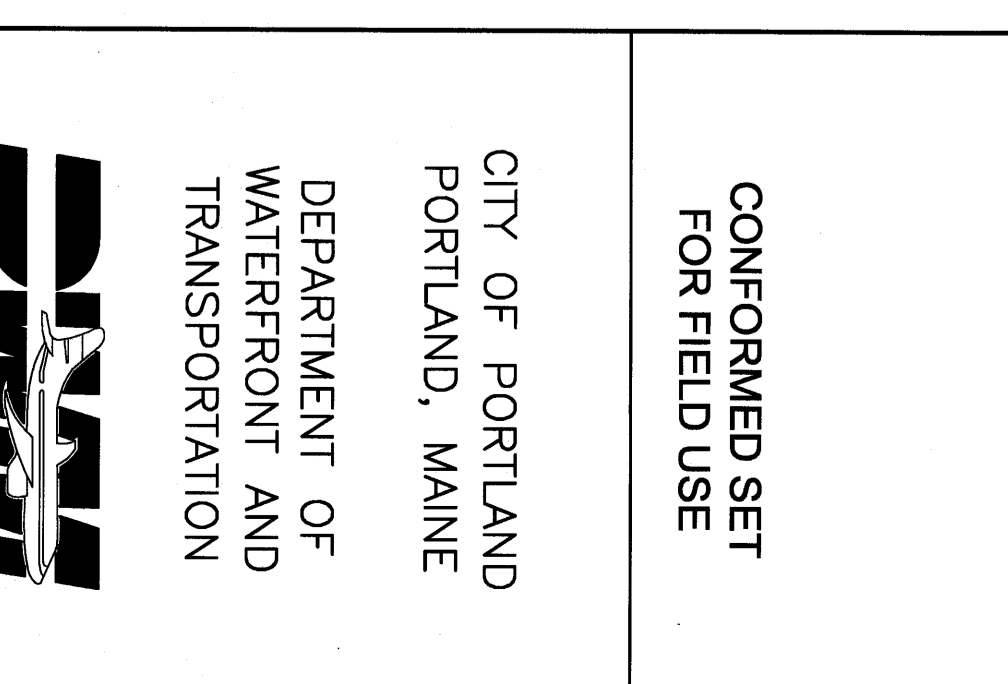
**7 SIDEWALK CONCRETE PAVEMENT DETAIL**  
NOT TO SCALE



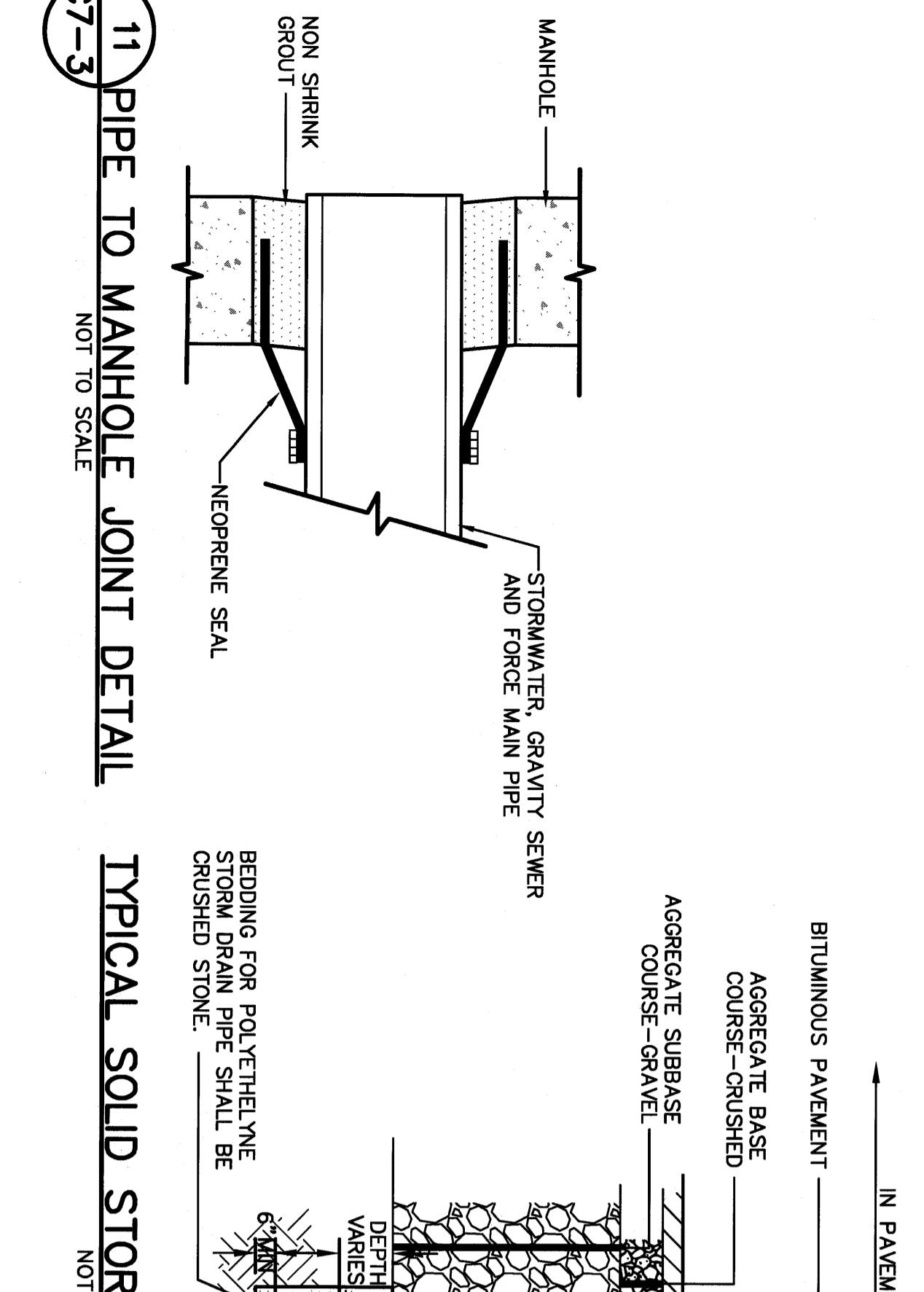
**8 PRECAST FLATTOP CATCH BASIN/DRAINAGE MANHOLE DETAIL**  
NOT TO SCALE



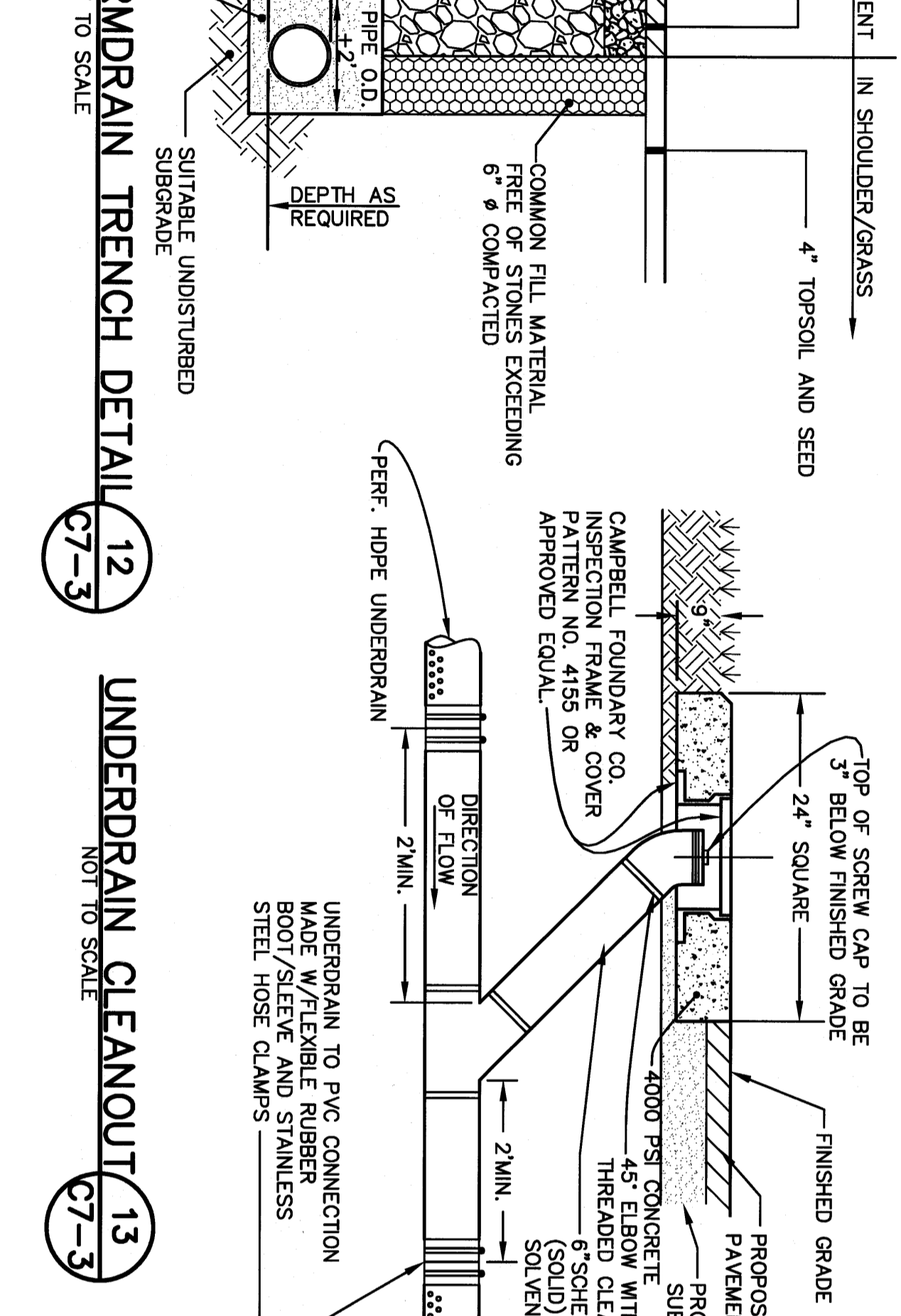
**9 FREEZELESS YARD HYDRANT DETAIL**  
NOT TO SCALE



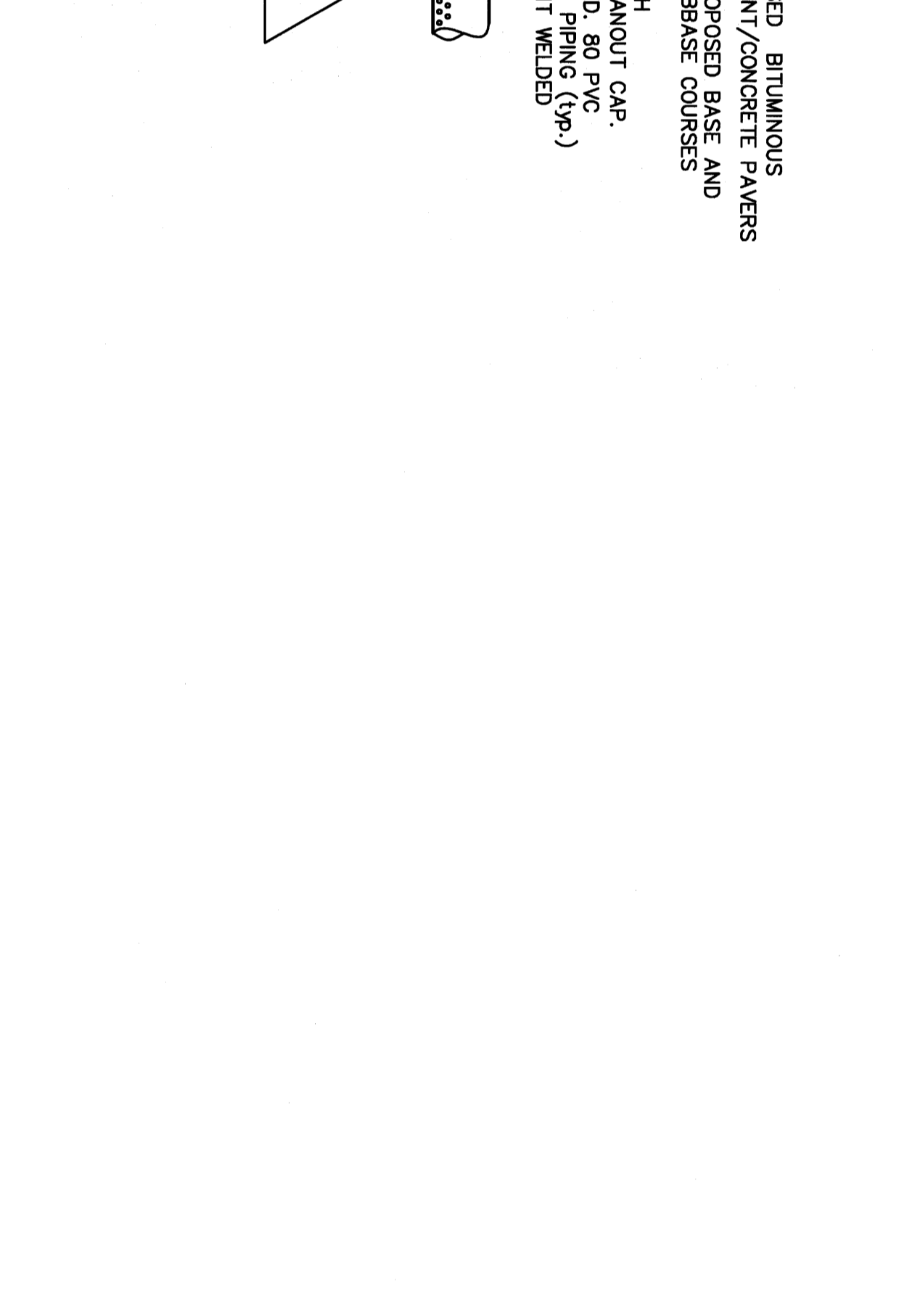
**10 TYPICAL PAVEMENT BUTT JOINT DETAIL**  
NOT TO SCALE



**11 PIPE TO MANHOLE JOINT DETAIL**  
NOT TO SCALE



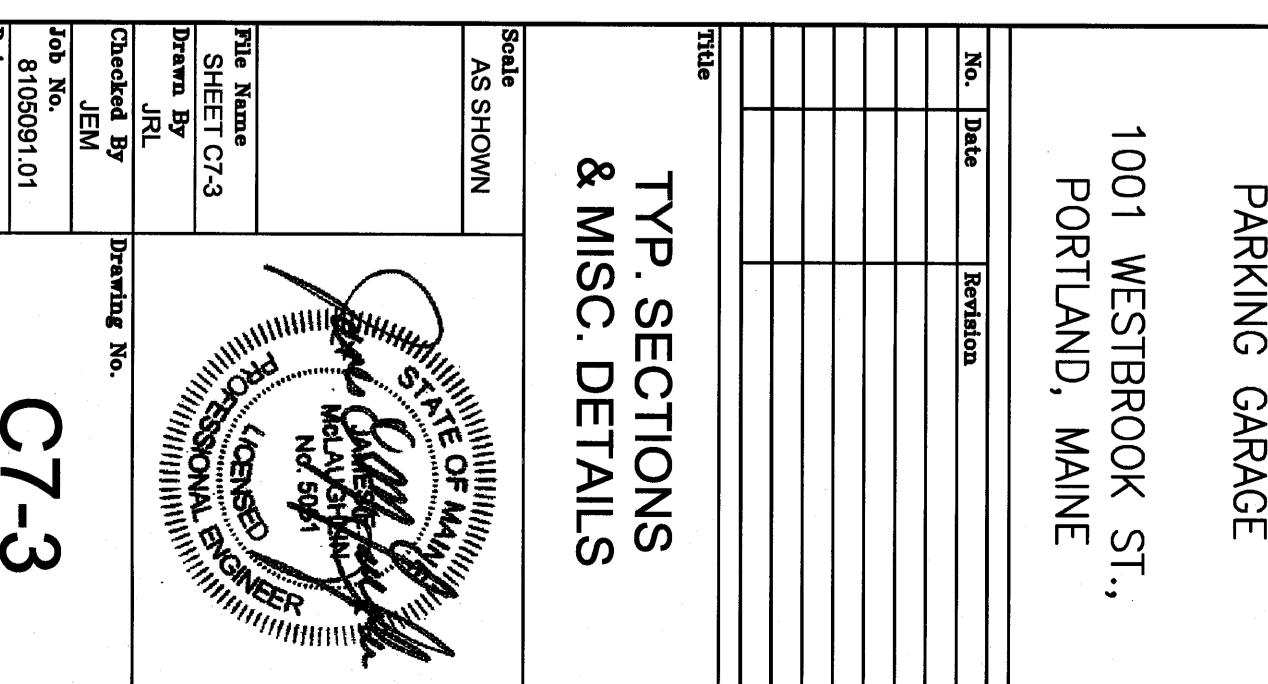
**12 TYPICAL UNDERDRAIN CLEANOUT DETAIL**  
NOT TO SCALE



**13 UNDERDRAIN CLEANOUT DETAIL**  
NOT TO SCALE



**14 RETURNED CURB HANDICAP RAMP DETAIL**  
NOT TO SCALE



**15 TYPICAL PAVEMENT BUTT JOINT DETAIL**  
NOT TO SCALE

**GENERAL HANDICAP RAMP NOTES:**

1. TRUNCATED DOME DETECTABLE WARNING SYSTEM SHALL BE CAST IN PLACE TILES AS MANUFACTURED BY ARMOR-TILE, WILLIAMSVILLE, N.Y. (1-800-882-2525). COLOR SHALL BE FEDERAL YELLOW.

**CONFORMED SET FOR FIELD USE**

CITY OF PORTLAND  
PORTLAND, MAINE

DEPARTMENT OF WATERFRONT AND TRANSPORTATION

**PHASE II**  
PARKING GARAGE

1001 WESTBROOK ST.,  
PORTLAND, MAINE

**STATTEC**  
Stattec Consulting Services Inc.  
22 Free Street, Suite 205  
Portland, ME 04103  
Tel. 207.775.3211  
Fax. 207.775.6434  
www.stattec.com

**DOMENECH HICKS & KROCKMALNIC ARCHITECTS**  
155 Massachusetts Ave.  
Boston, MA 02115  
617-267-6408  
Fax 617-267-1990

**TYP. SECTIONS & MISC. DETAILS**

NO. DATE REVISION

DATE: AS SHOWN

DESIGNED BY: [Signature]

CHECKED BY: [Signature]

DATE: 01/08/01

PROJECT NO. 22508

**C7-3**