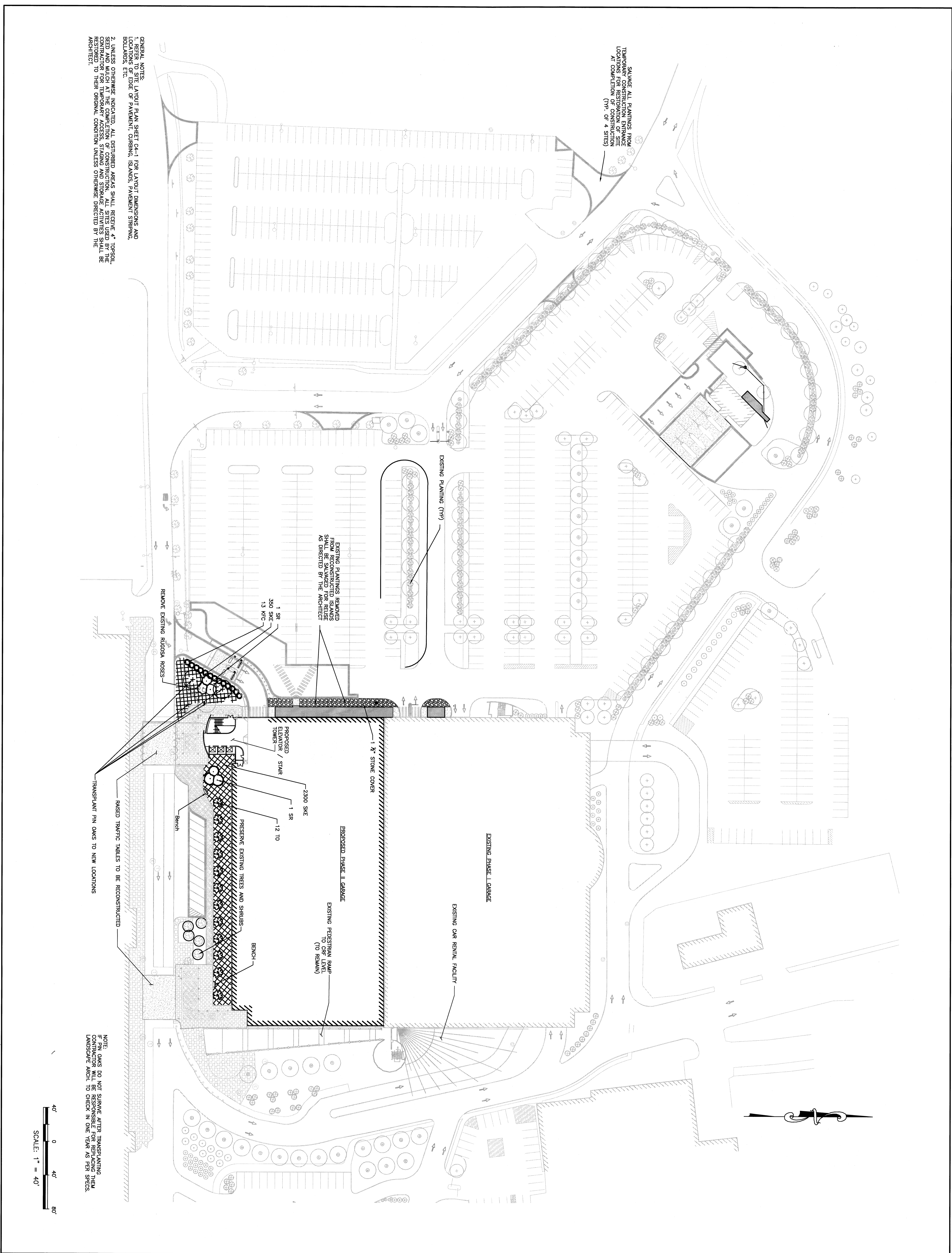
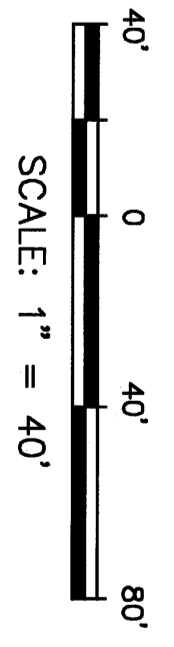


If this sheet is less than 30"x42" in size, it has been reduced. Graphic scales must be adjusted accordingly.



GENERAL NOTES:
 1. REFER TO SITE LAYOUT PLAN SHEET C4-1 FOR LAYOUT DIMENSIONS AND BOUNDARIES ETC.
 2. UNLESS OTHERWISE INDICATED, ALL DISTURBED AREAS SHALL RECEIVE 4" TOP-SOIL, SEEDING AND MULCH AT COMPLETION OF CONSTRUCTION. ALL STIES USED BY THE CONTRACTOR FOR LANDSCAPE FUNCTIONS SHALL BE RESTORED TO THEIR ORIGINAL CONDITION UNLESS OTHERWISE DIRECTED BY THE ARCHITECT.

NOTE: PIN OAKS DO NOT SURVIVE AFTER TRANSPARENT CONSTRUCTION AND LANDSCAPE ARCH. TO CHECK IN ONE YEAR AS PER SPECS.



<p>Stantec Stantec Consulting Services Inc. 22 Free Street, Suite 209 Portland, ME 04106 Tel. 207.775.3211 Fax. 207.775.6434 www.stantec.com</p>	<p>155 Massachusetts Ave. Boston, MA 02115 617-267-6408 Fax 617-267-1990</p>	<p>DOMENECH HICKS & KROCKMALLINC ARCHITECTS</p>	<p>CITY OF PORTLAND PORTLAND, MAINE DEPARTMENT OF WATERFRONT AND TRANSPORTATION</p>	<p>PWTI PORTLAND INTERNATIONAL JETPORT PHASE II PARKING GARAGE 1001 WESTBROOK ST., PORTLAND, MAINE</p>	<p>CONFORMED SET FOR FIELD USE</p>
					<p>NO. DATE REVISION</p>
<p>TITLE: LANDSCAPE PLAN</p>					
<p>SCALE: 1" = 40'</p>					
<p>C7-1</p>					