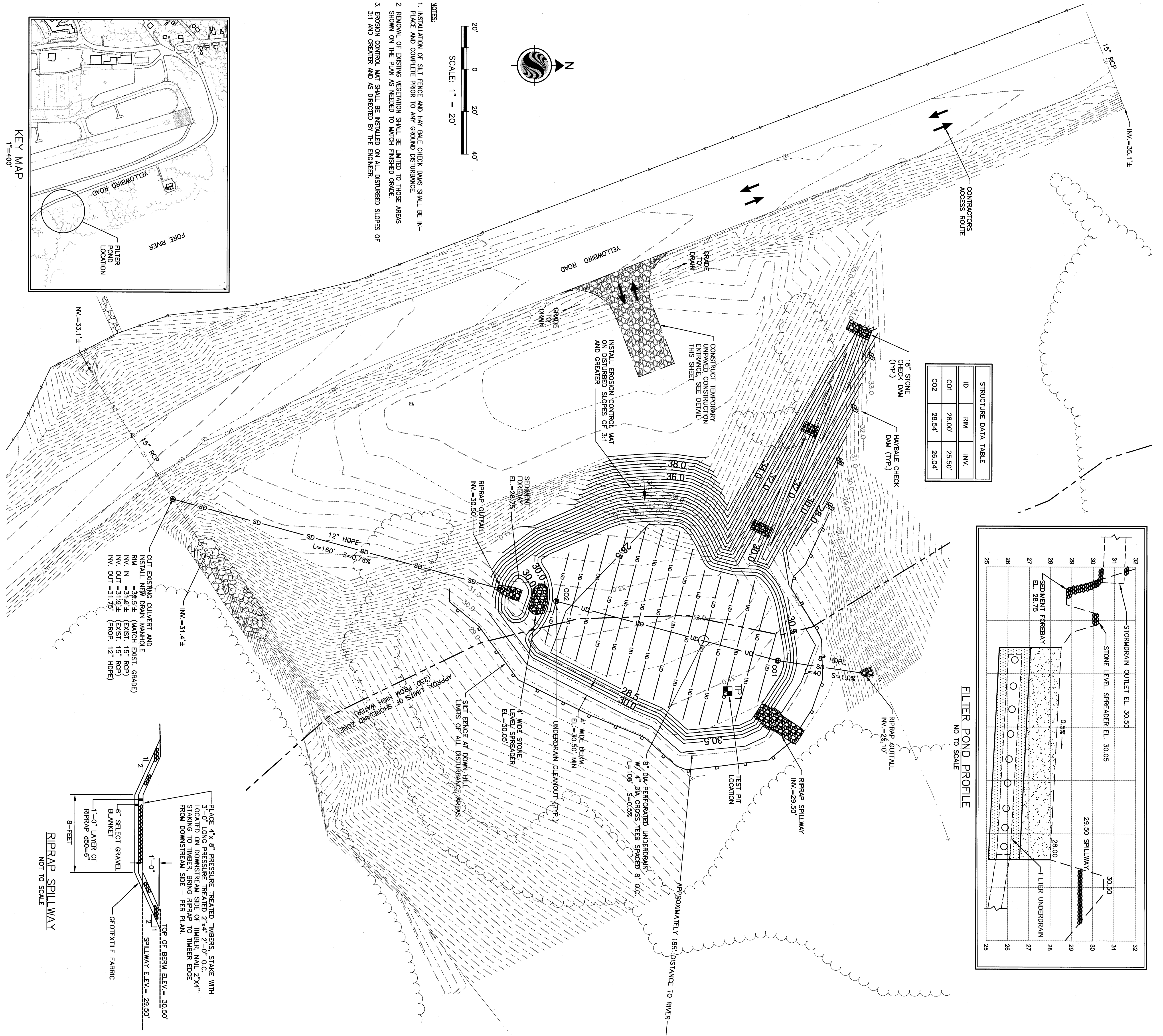
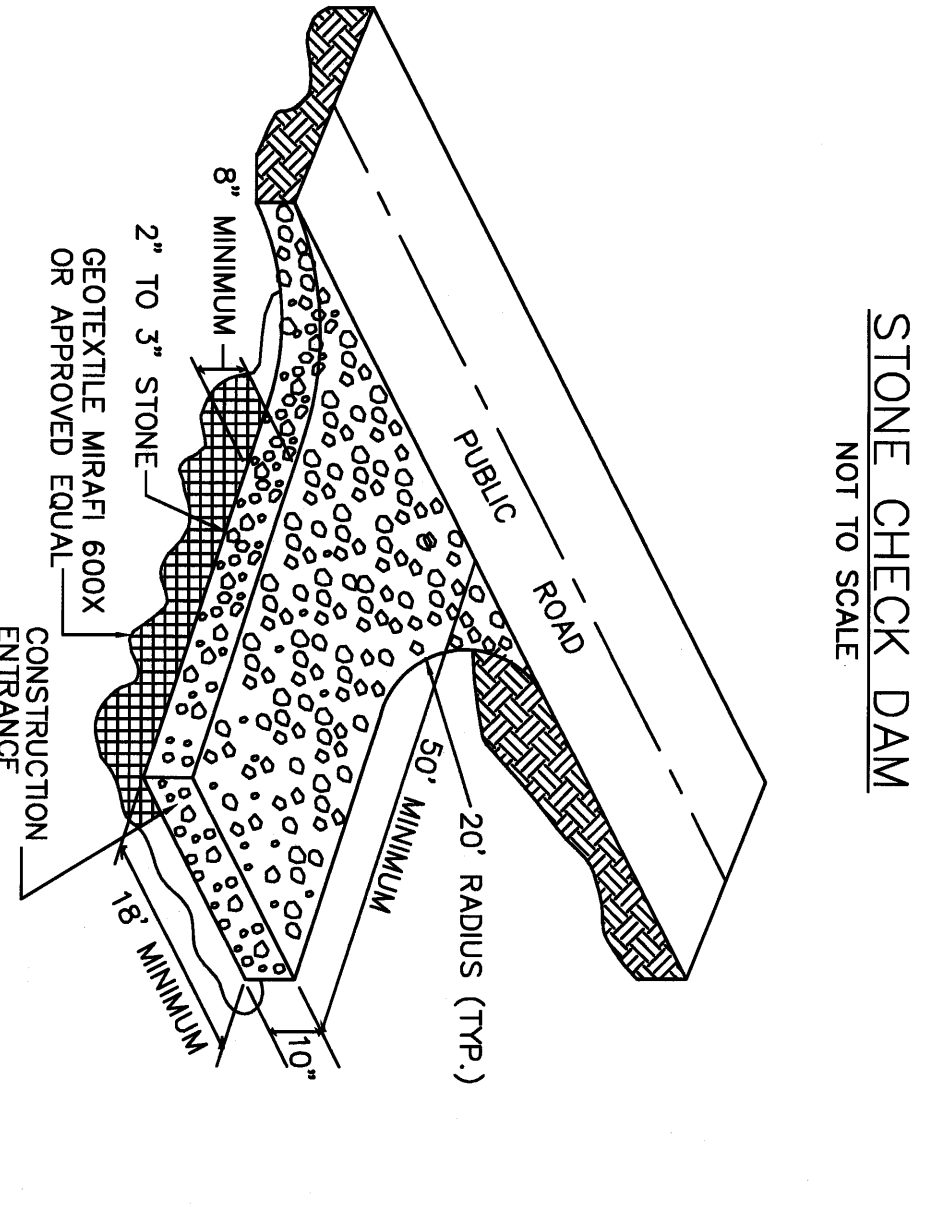
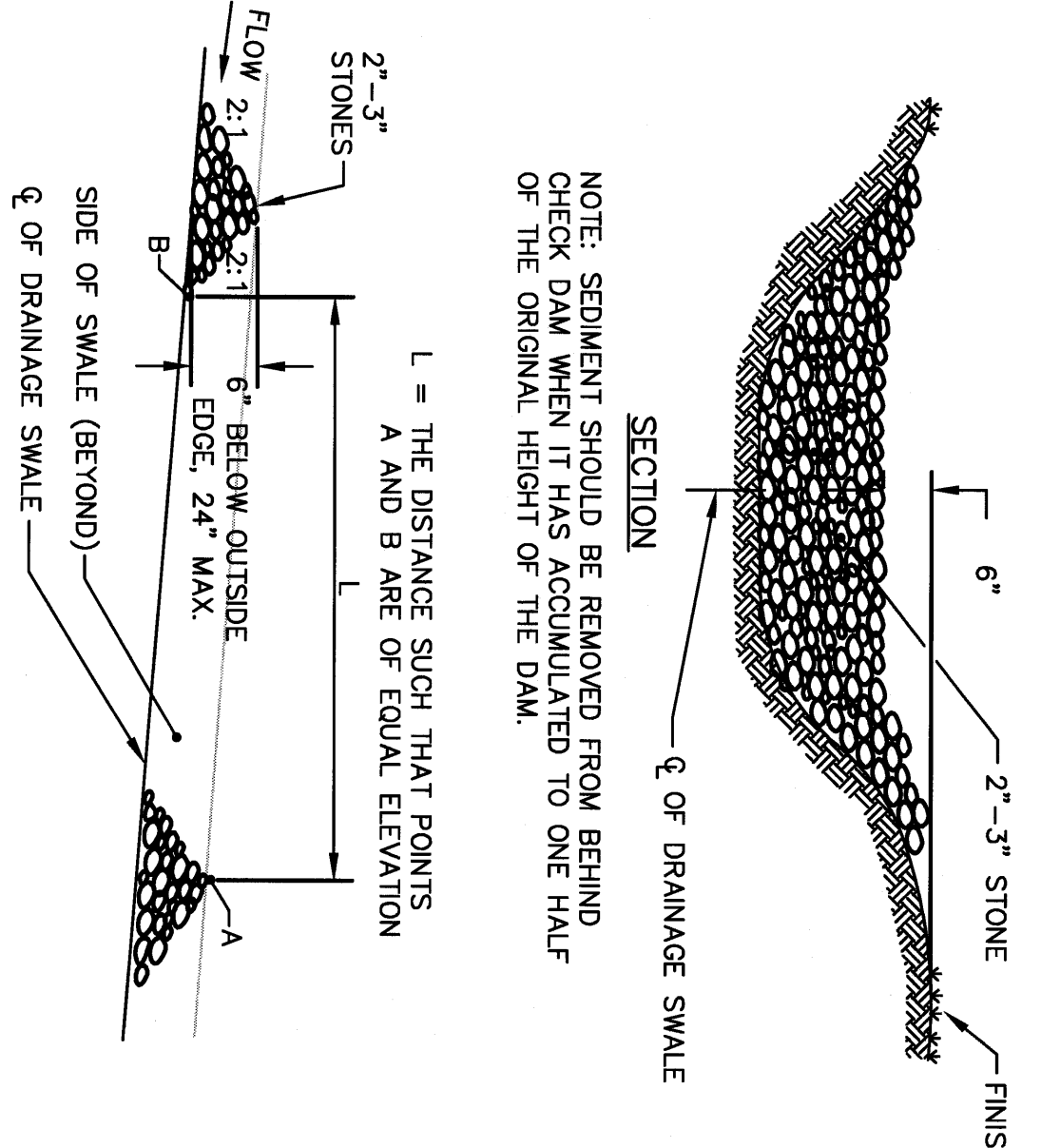
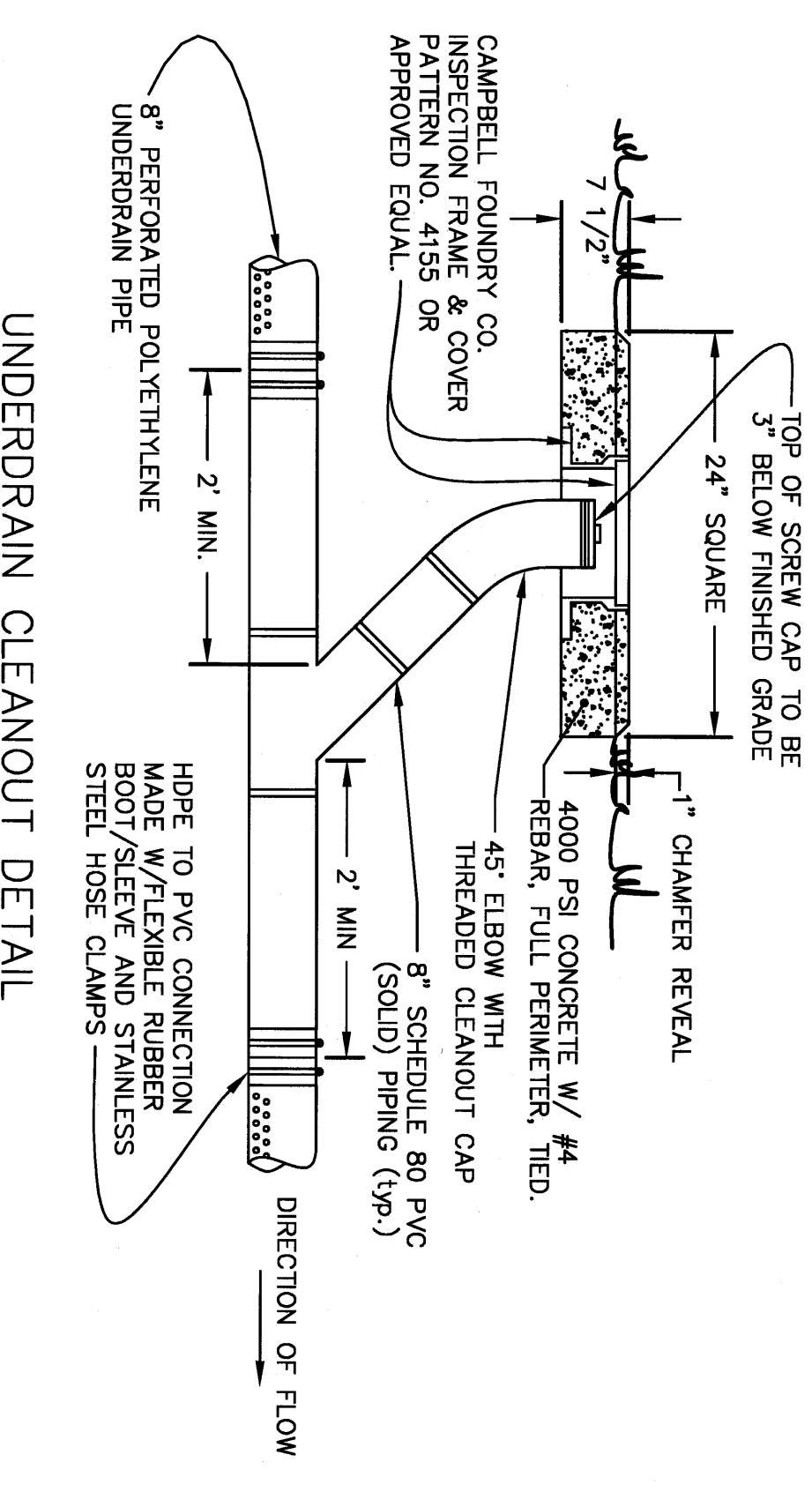
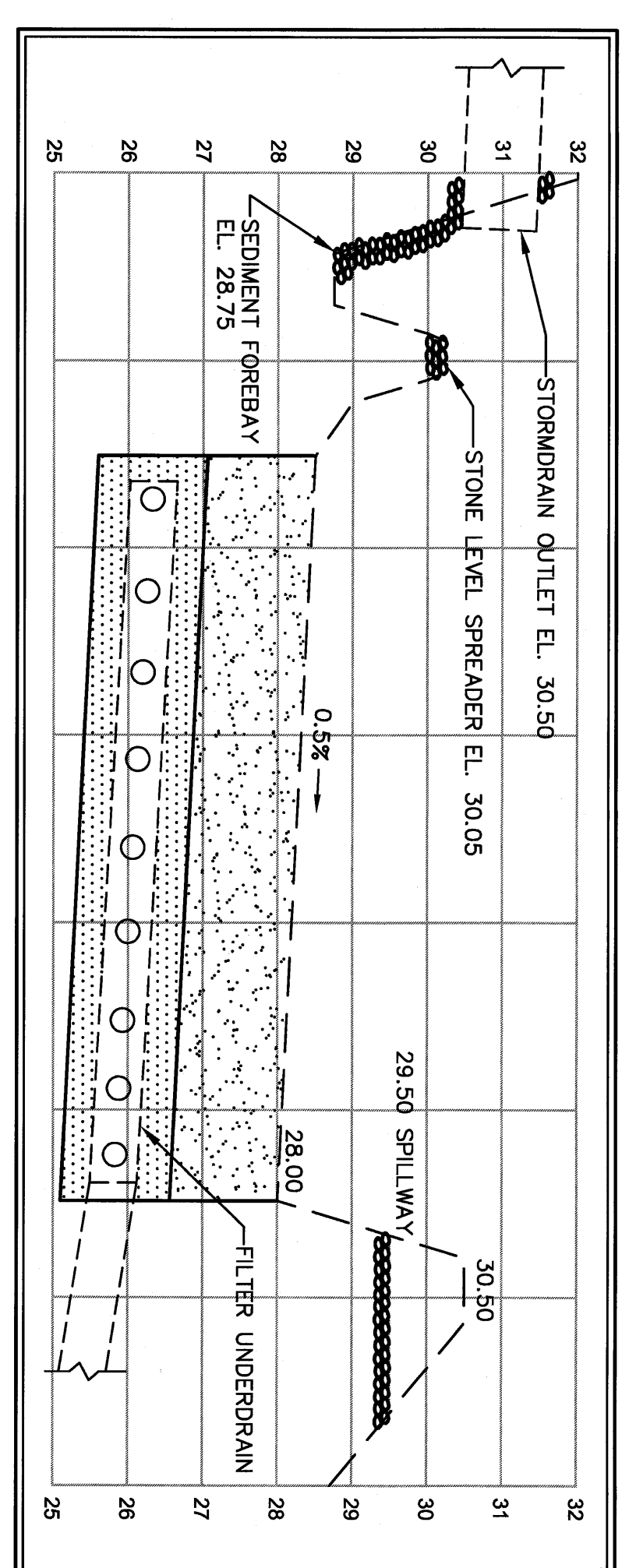
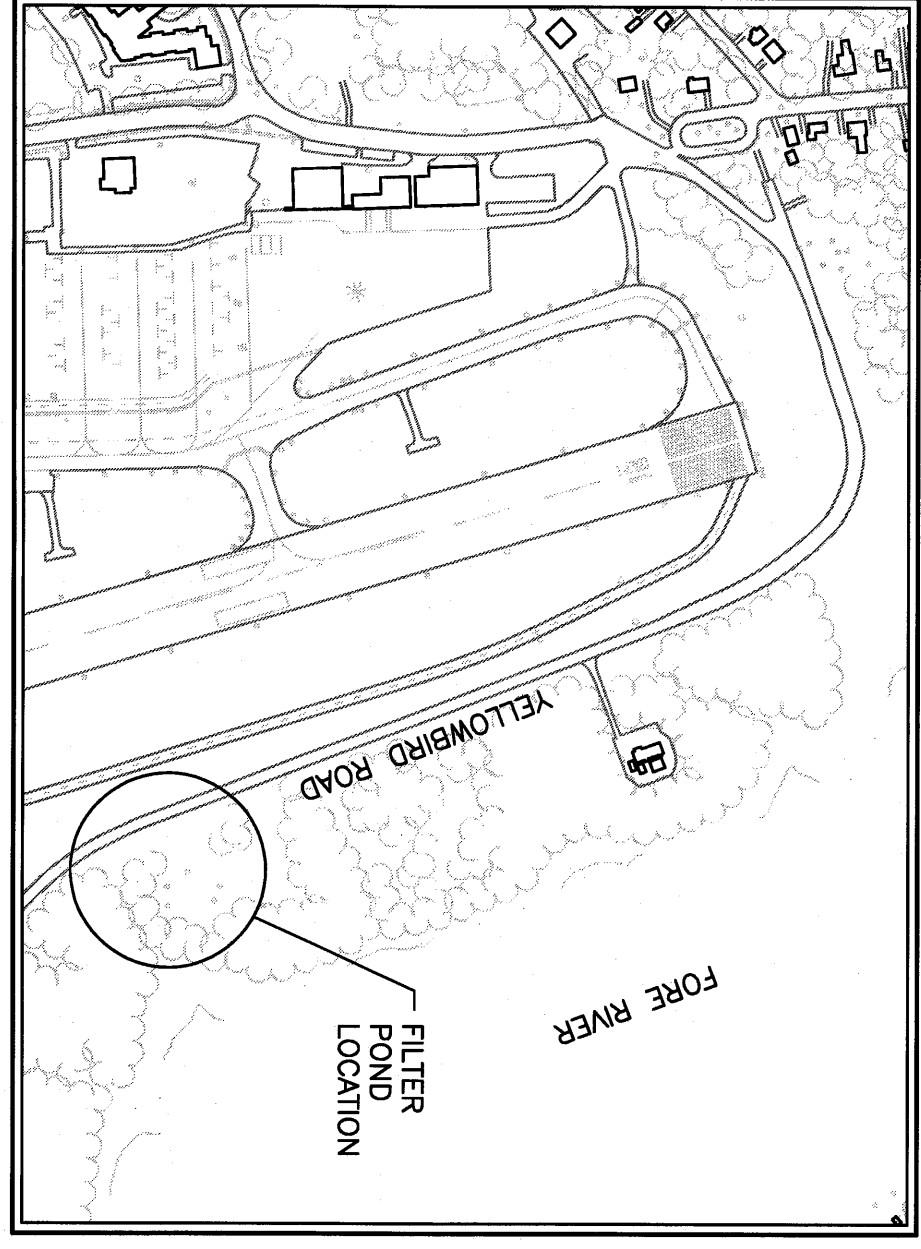
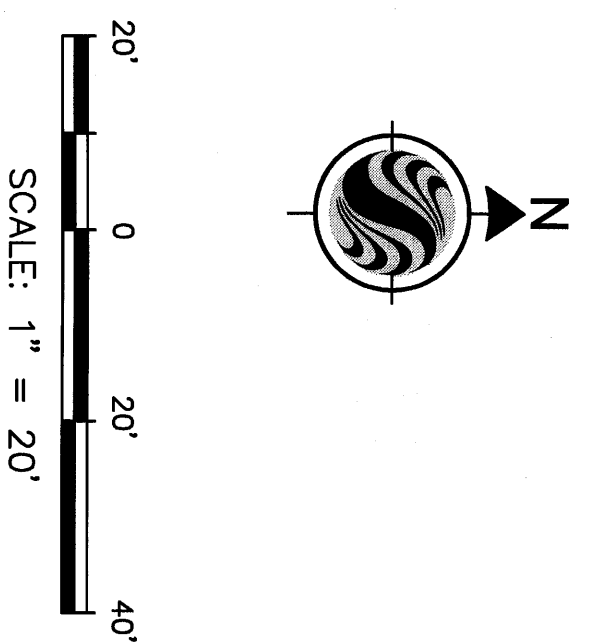


STRUCTURE DATA TABLE

ID	RIM	INV.
C01	28.00'	25.50'
C02	28.54'	26.04'



- NOTES:
1. INSTALLATION OF BLUE FENCE AND LIVE BLUE CHECK DAMS SHALL BE IN-PLACE AND COMPLETE PRIOR TO ANY GROUND DISTURBANCE.
  2. REMOVAL OF EXISTING VEGETATION SHALL BE LIMITED TO THOSE AREAS SHOWN ON THE PLAN AS NEEDED TO MATCH FINISHED GRADE.
  3. EROSION CONTROL MAT SHALL BE INSTALLED ON ALL DISTURBED SLOPES OF .3:1 AND GREATER AND AS DIRECTED BY THE ENGINEER.



OUT EXISTING CLEANOUT AND INSTALL NEW DRAIN MANHOLE RIM IN = 39.5 ± (MATCH EXIST. GRADE) INV. IN = 31.9 ± (EXIST. 15" RCP) INV. OUT = 31.9 ± (EXIST. 15" RCP) INV. OUT = 31.1 ± (PROP. 12" HDPE)

PLACE 4" x 8" PRESSURE TREATED TIMBERS, STAKE WITH 3" x 0" LONG PRESSURE TREATED 2" x 4" 2'-0" O.C. STAKING TO UPPER RIM OF RIPRAP. THE RIBS SHALL BE FROM DOWNSTREAM SIDE - PER PLAN.

3'-0" LONG PRESSURE TREATED 2" x 4" 2'-0" O.C. STAKING TO UPPER RIM OF RIPRAP. THE RIBS SHALL BE FROM DOWNSTREAM SIDE - PER PLAN.

- NOTES:
1. VEGETATED UNDERDRAIN SOIL FILTER SWALE SHALL BE CONSTRUCTED PER MAINE DEPARTMENT OF ENVIRONMENTAL PROTECTION GUIDELINES FOUND IN STORMWATER MANAGEMENT FOR WARE DRAIN SWALES, 2008.
  2. COARSE LOAMY SAND SHALL CONSIST OF A MIXTURE OF COARSE LOAMY SAND WITH 10% PASSING #20 SIEVE AND 90% PASSING #40 SIEVE. THIS MIXTURE SHALL MEET THE SIEVE ANALYSIS SPECIFICATION PROVIDED IN TABLE 1 THIS SHEET.
  3. COARSE GRAVEL SHALL CONSIST OF 8" WASHED CLEAN, COARSE GRAVEL. LETTING THE #20 SIEVE. THE COARSE GRAVEL SHALL CONTAIN NO MORE THAN 5% FINES PASSING THE #20 SIEVE.
  4. DURING CONSTRUCTION, CARE SHALL BE TAKEN TO AVOID COMPACTION OF SOIL. THE COARSE GRAVEL AND THE COARSE LOAMY SAND COMPACTION SHALL BE BY SATURATION ONLY, UNLESS SPECIAL LOW COMPACTION EQUIPMENT IS USED.
  5. INSTALLATION OF THE SOIL FILTER MATERIAL SHALL NOT COMMENCE UNTIL ALL SITE WORK UPSTREAM FROM THE SWALE HAS BEEN COMPLETED. ALL DRAINAGE SYSTEMS HAVE BEEN INSTALLED, AND PERMANENT STABILIZATION OF THE SITE HAS BEEN ESTABLISHED.
  6. THE FILTER POND SHALL BE IN-PLACE AND FULLY STABILIZED WITH VEGETATION PRIOR TO DISCHARGE STORMWATER RUNOFF INTO THE POND. THE CONTRACTOR SHALL OVERSEE ALL FLOWS AWAY FROM THE POND UNTIL STABILIZATION HAS BEEN APPROVED BY THE ARCHITECT.

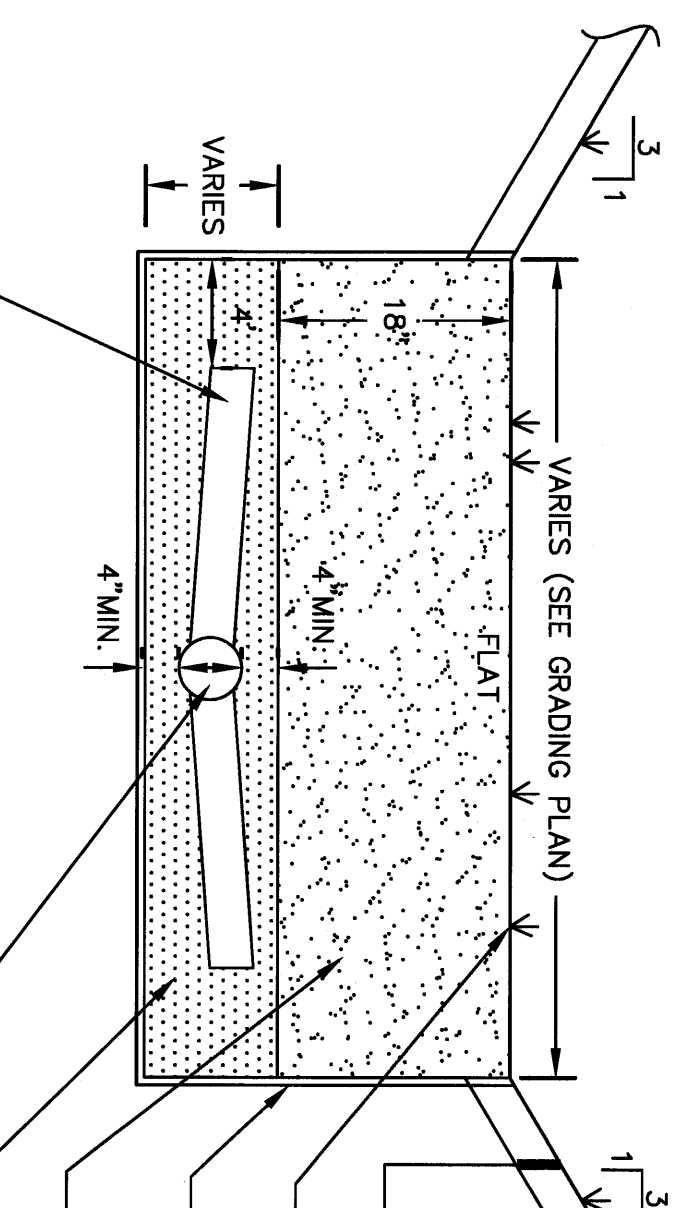


TABLE 1  
COARSE LOAMY SAND SIEVE ANALYSIS SPECIFICATION

SIEVE #	% PASSING
10	85 - 100
20	70 - 100
40	15 - 40
#200	0 - 15

TABLE 2  
MIE DOT SPECIFICATIONS FOR UNDERDRAINS (MIE DOT #703.22)

SIEVE SIZE	% BY WEIGHT
1"	95 - 100
1/2"	75 - 100
#4	50 - 100
#20	15 - 80
#40	0 - 15
#200	0 - 5

CONFORMED SET FOR FIELD USE

CITY OF PORTLAND  
PORTLAND, MAINE

DEPARTMENT OF WATERFRONT AND TRANSPORTATION

**PORTLAND INTERNATIONAL JETPORT**

PHASE II  
PARKING GARAGE

1001 WESTBROOK ST.,  
PORTLAND, MAINE

**DOMENECH HICKS & KROCKMALNIC ARCHITECTS**

155 Massachusetts Ave.  
Boston, MA 02115  
617-267-6408  
Fax: 617-267-1990

**Stattec**  
Stattec Consulting Services Inc.  
22 Free Street, Suite 205  
Portland, ME USA  
Tel: 207.775.3211  
Fax: 207.775.6344  
www.stattec.com

Scale: 1"=20'

Drawn by: JDN  
Checked by: JEM  
Date: 03/08/11  
Sheet: 22/28

**FILTER POND GRADING PLAN**

**C6-3**

If this sheet is less than 30"x42" in size, it has been reduced. Graphic scales must be adjusted accordingly.