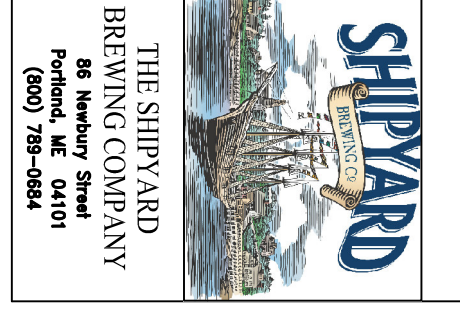


Item	Date



**The Shipyard**  
Main Terminal - Lower Level  
Portland International Jetport  
1001 Westbrook Street  
Portland, ME 04102



**IMHS Host**  
6600 Rockledge Drive  
Bethesda, MD 20817  
Ph: (301) 646-4625  
Fax: (301) 694-1175

**L2M Foodservice**  
DESIGN GROUP  
811 Cornwell Park Drive  
Glen Burnie, MD 21061  
Ph: (410) 863-1302  
Fx: (410) 863-1308

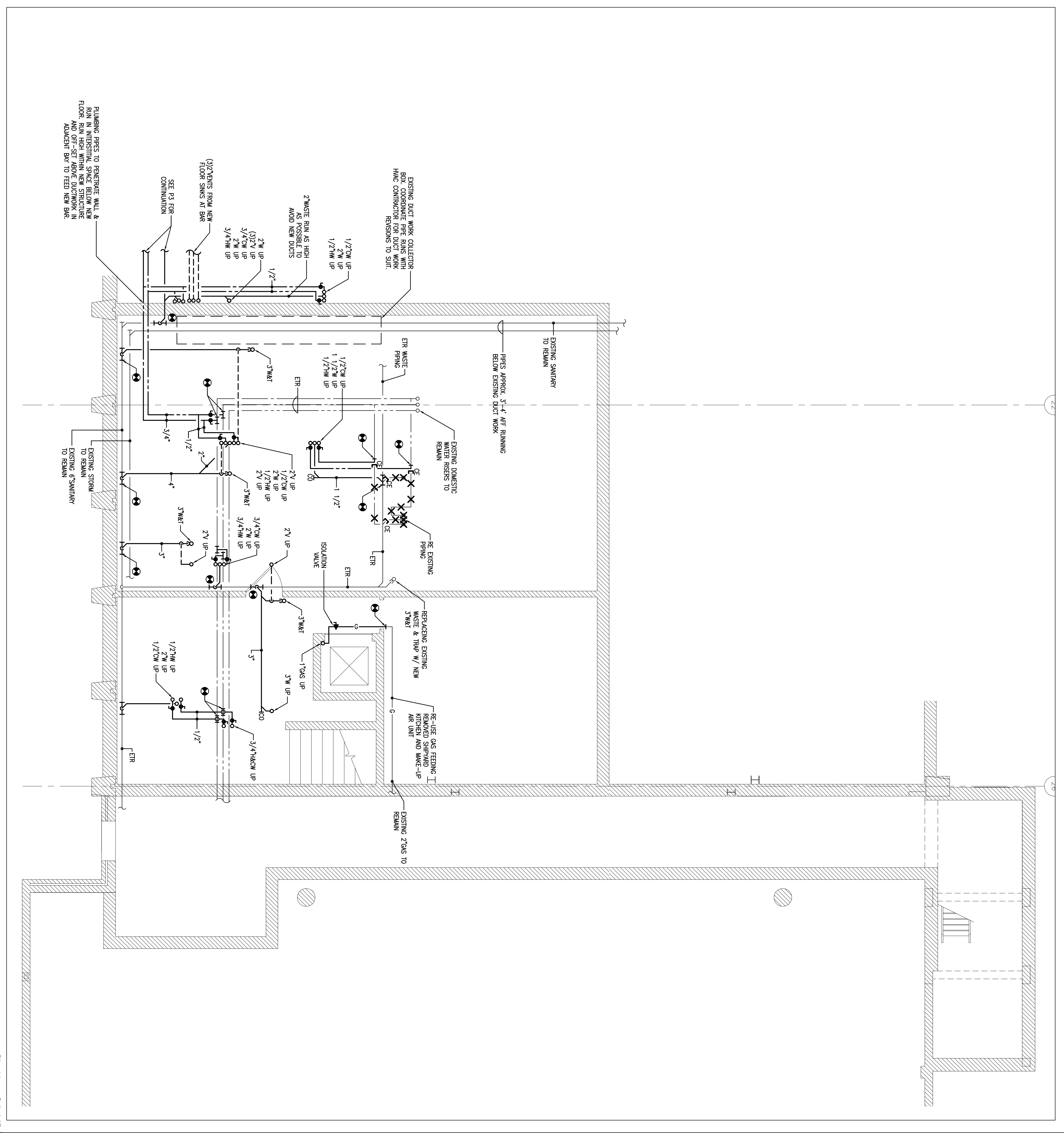
**Building Engineering Resources, Inc.**  
38 Main Street, Bldg. 43A  
North Farnham, MA 02156  
Tel: (508) 234-0200  
Fax: (508) 234-0200  
E: ber@buildingresources.com

**LLOYD ARCHITECTS**  
Two High Cliff, Plymouth MA 02360  
TEL: (508) 746-4646  
FAX: (508) 746-4646  
WWW: www.lloydarch.com  
E-MAIL: info@lloydarch.com

Job No.: 072117  
Scale: 1/4"=1'-0"  
Issued: 12/11/07

Plumbing  
Basement Plan

P2



PLUMBING PIPES TO PENETRATE WALL & RUN IN INTERSTITIAL SPACE BELOW NEW FLOOR. RUN HIGH WITHIN NEW STRUCTURE AND OFF-SET ABOVE DUCTWORK IN ADJACENT RM TO FEED NEW BAR.