

FAN INFORMATION					EXHAUST FAN					SUPPLY FAN										
FAN UNIT NO.	FAN UNIT MODEL #	MODEL	TAG	CFM	S.P.	HP	HP	φ	VOLT	FLA	BLOWER	HOUSING	TAG	CFM	S.P.	HP	HP	φ	VOLT	FLA
1	NCA16HFA	NCA16HFA	2438	-	1800*	1392	1500	3	208	4.7										
2	KSF-1 Pre-Security										G10	AI-D-250		1950	0.750*	1190	1300	3	208	4.7

FAN OPTIONS

FAN NO.	OPTION (Qty. - Descr.)
1	1 - Grease Box
2	1 - Pressure Gauge, 0-35"
	1 - Motorized Backdraft Damper for AI-D Housing

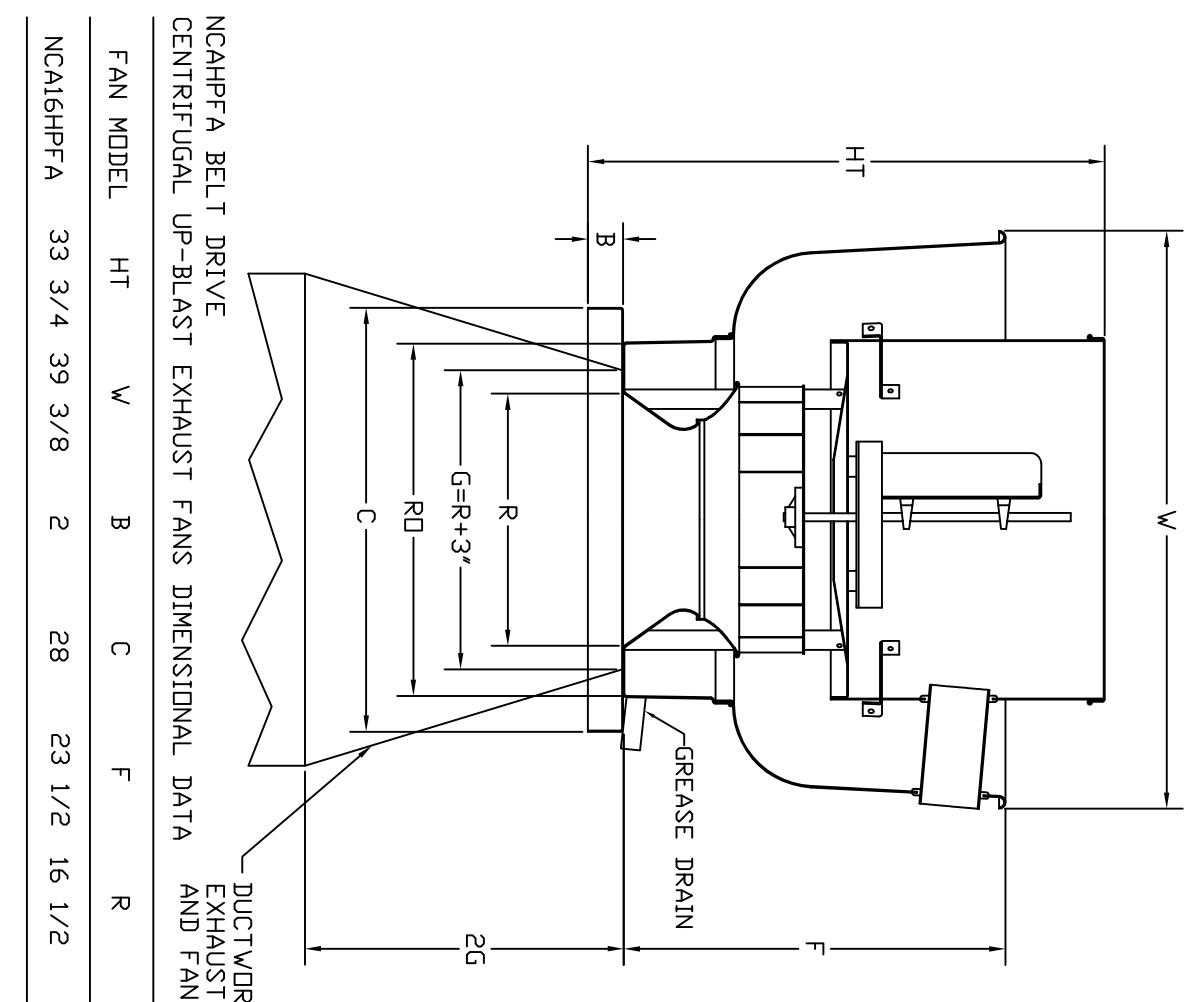
GAS FIRED MAKE-UP AIR UNITS)

FAN UNIT NO.	BTU's	TEMP. RISE	GAS TYPE
2	156195	75 deg F	Natural

CURB ASSEMBLIES

NO. DN	ITEM	SIZE
1 #1	Curb	26500"V x 26500"L x 20000"H Vented Hinged
2 #2	Curb	21000"V x 71000"L x 20000"H Insulated

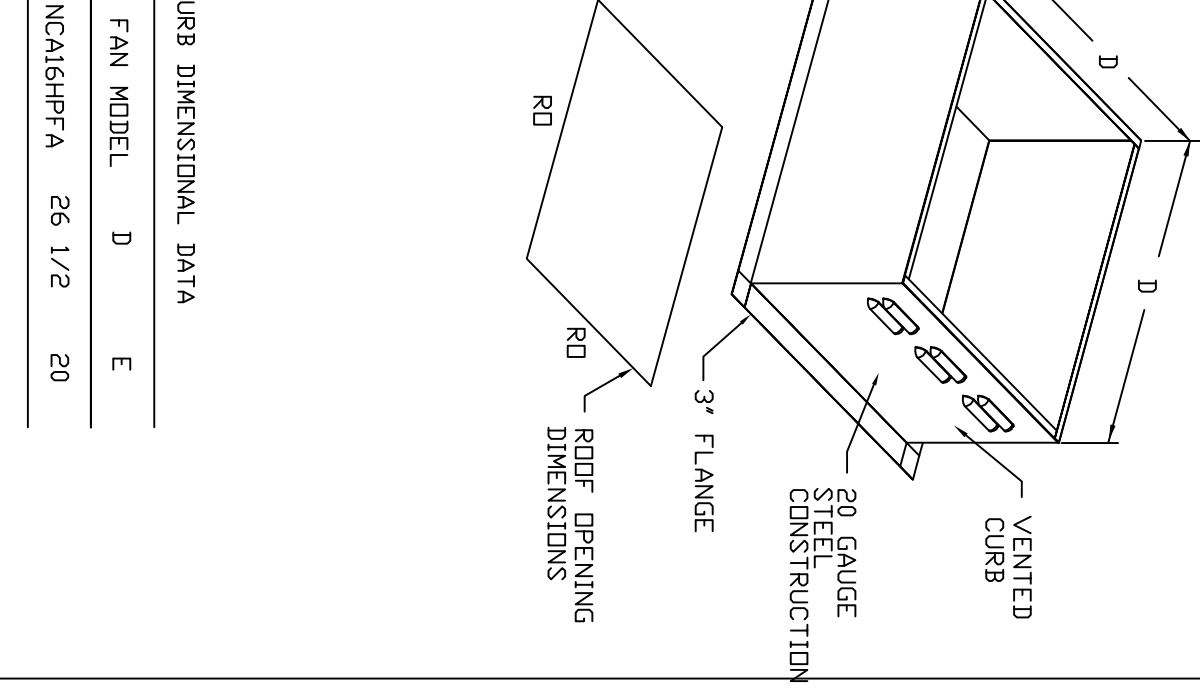
NCAHFA SERIES UPPLAST EXHAUST FANS (UL762)



- FEATURES:**
- ROOF MOUNTED FANS
 - RESTAURANT MODEL
 - UL762
 - WAKE SOUND AND AIR CERTIFIED
 - WIRING FROM MOTOR TO DISCONNECT SWITCH
 - HIGH HEAT DEGRADATION 300°F (149°C)
 - GREASE CLASSIFICATION TESTING
- NORMAL TEMPERATURE TEST**
EXHAUST FAN MUST OPERATE CONTINUOUSLY WHILE EXHAUSTING AIR AT 300°F (149°C) THROUGH LEAKY MOTOR AND ELECTRICAL WIRING. AFTER 15 MINUTES OF OPERATION THE FAN SHOULD NOT SHOW ANY DETERIORATING EFFECTS TO THE FAN WHICH WOULD CAUSE UNSAFE OPERATION.
- ABNORMAL FLARE-UP TEST**
EXHAUST FAN MUST OPERATE CONTINUOUSLY WHILE EXHAUSTING BURNING GREASE VAPORS 15 MINUTES WITHOUT THE FAN BECOMING DAMAGED TO ANY EXTENT THAT COULD CAUSE AN UNSAFE CONDITION.

OPTIONS:

- GREASE BOX
- PISTON CURB
- INSULATED CURB



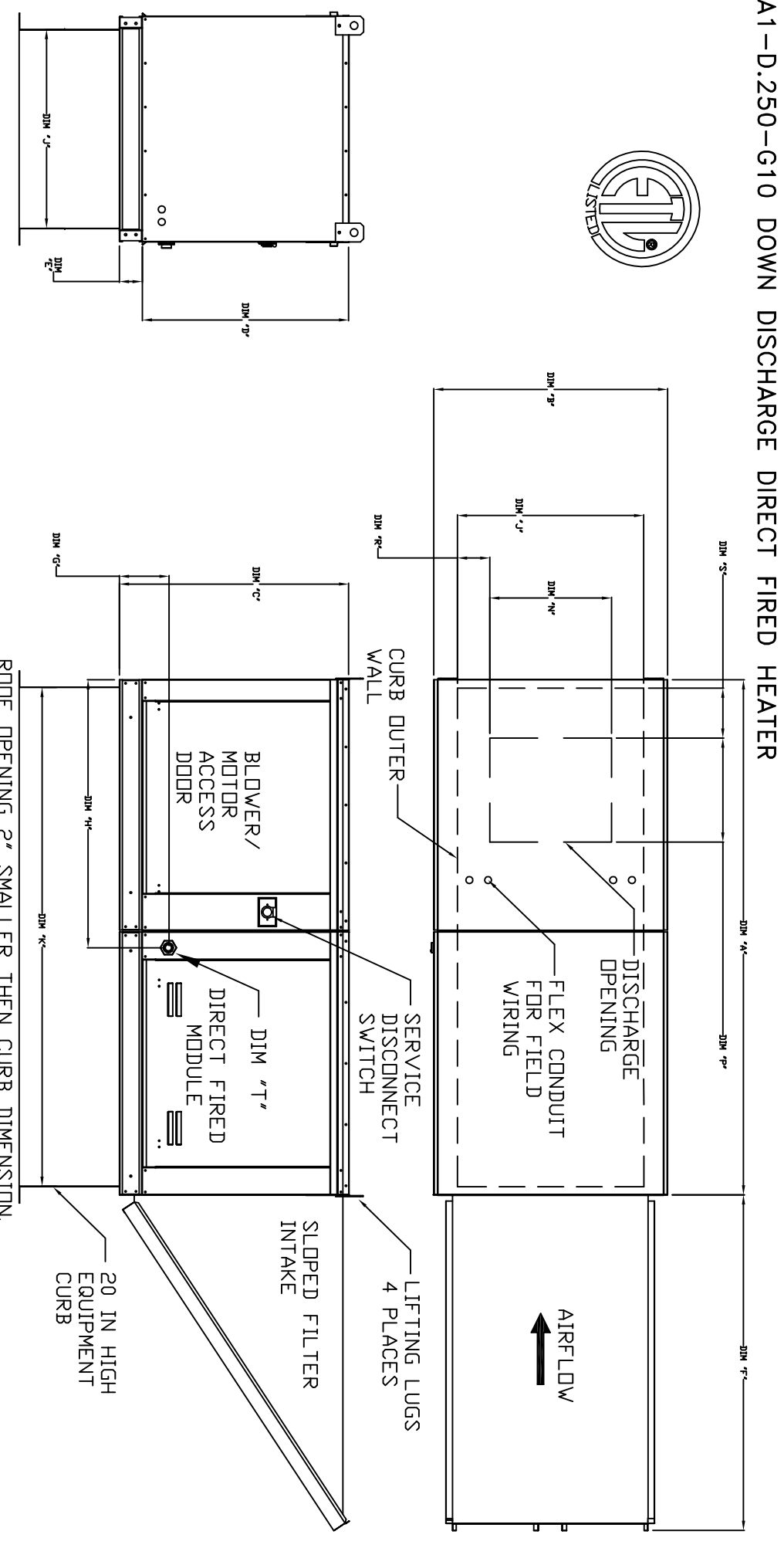
CURB DIMENSIONAL DATA

FAN MODEL	D	E
NCA16HFA	26 1/2	20

DRAWINGS PROVIDED BY CAPTIVE-AIR:

HOOD, EXHAUST FAN AND MOTOR DRAWINGS PROVIDED BY CAPTIVE-AIR OR APPROVED EQUAL TO DESIGN CRITERIA SCHEDULED.

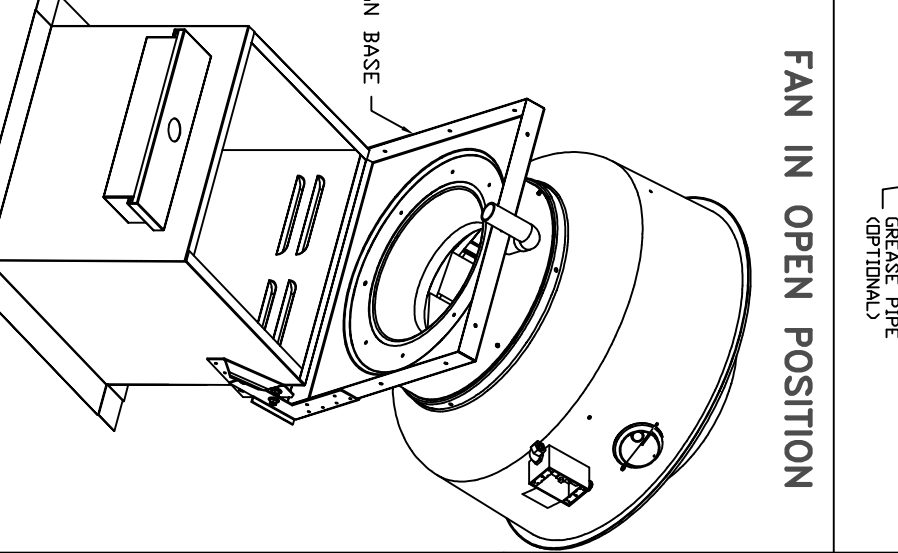
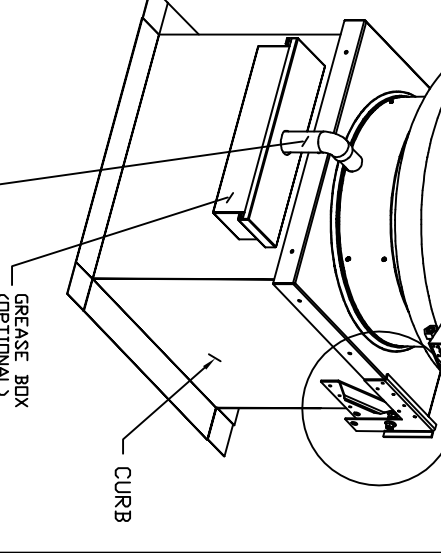
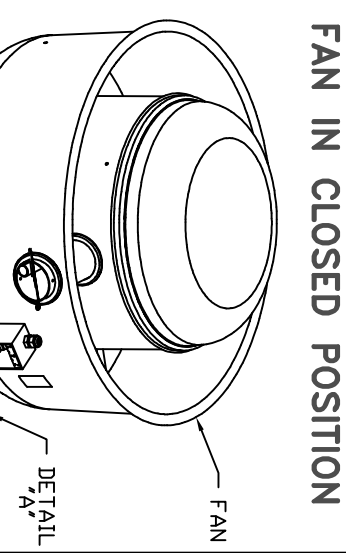
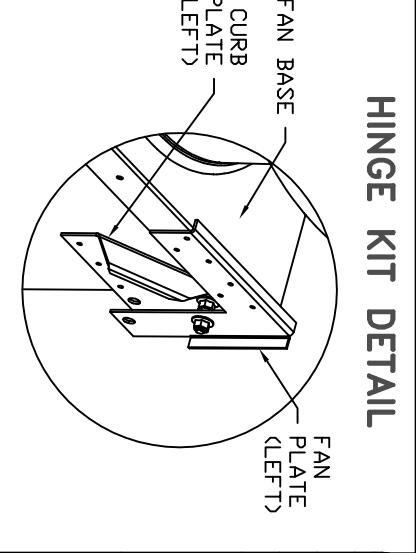
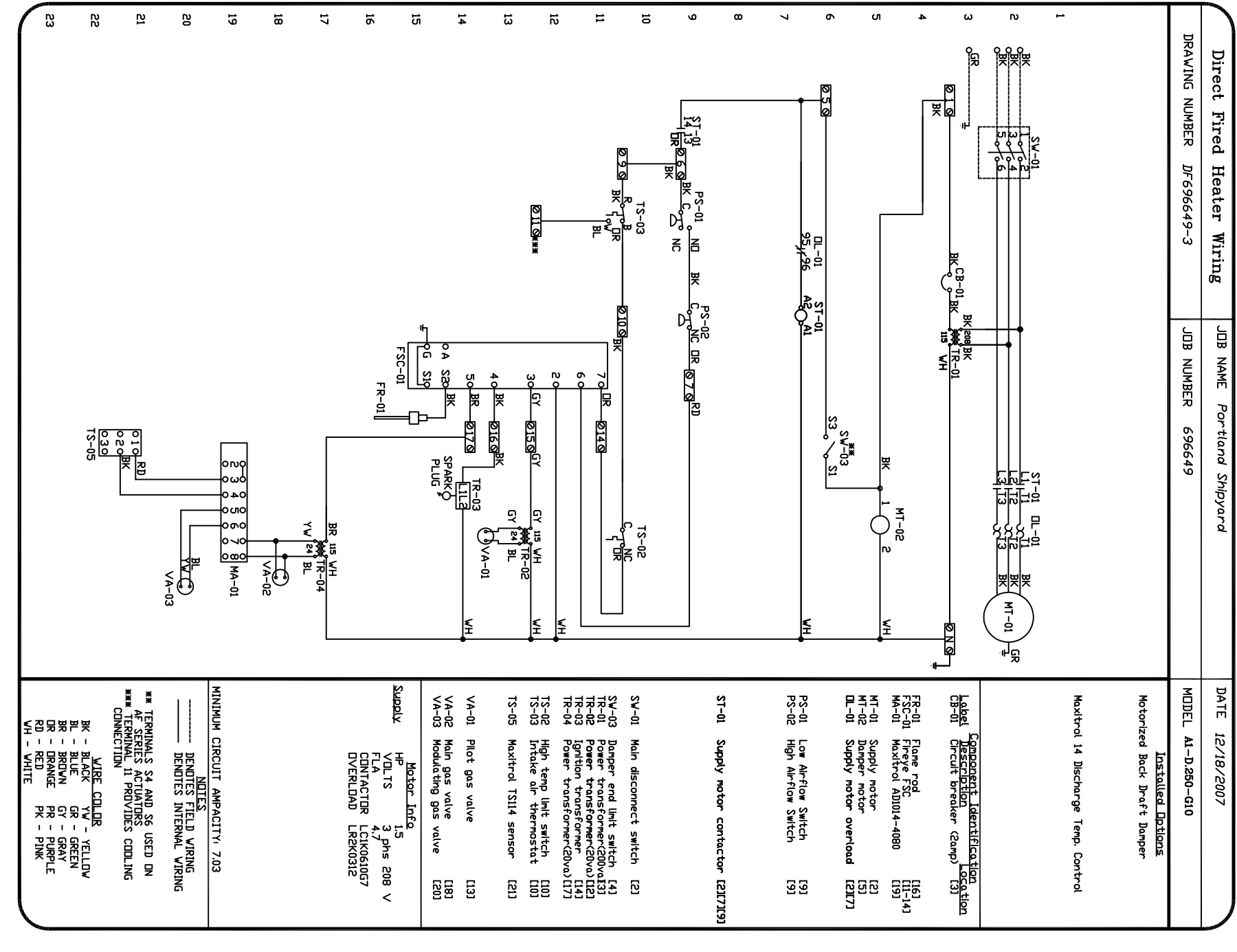
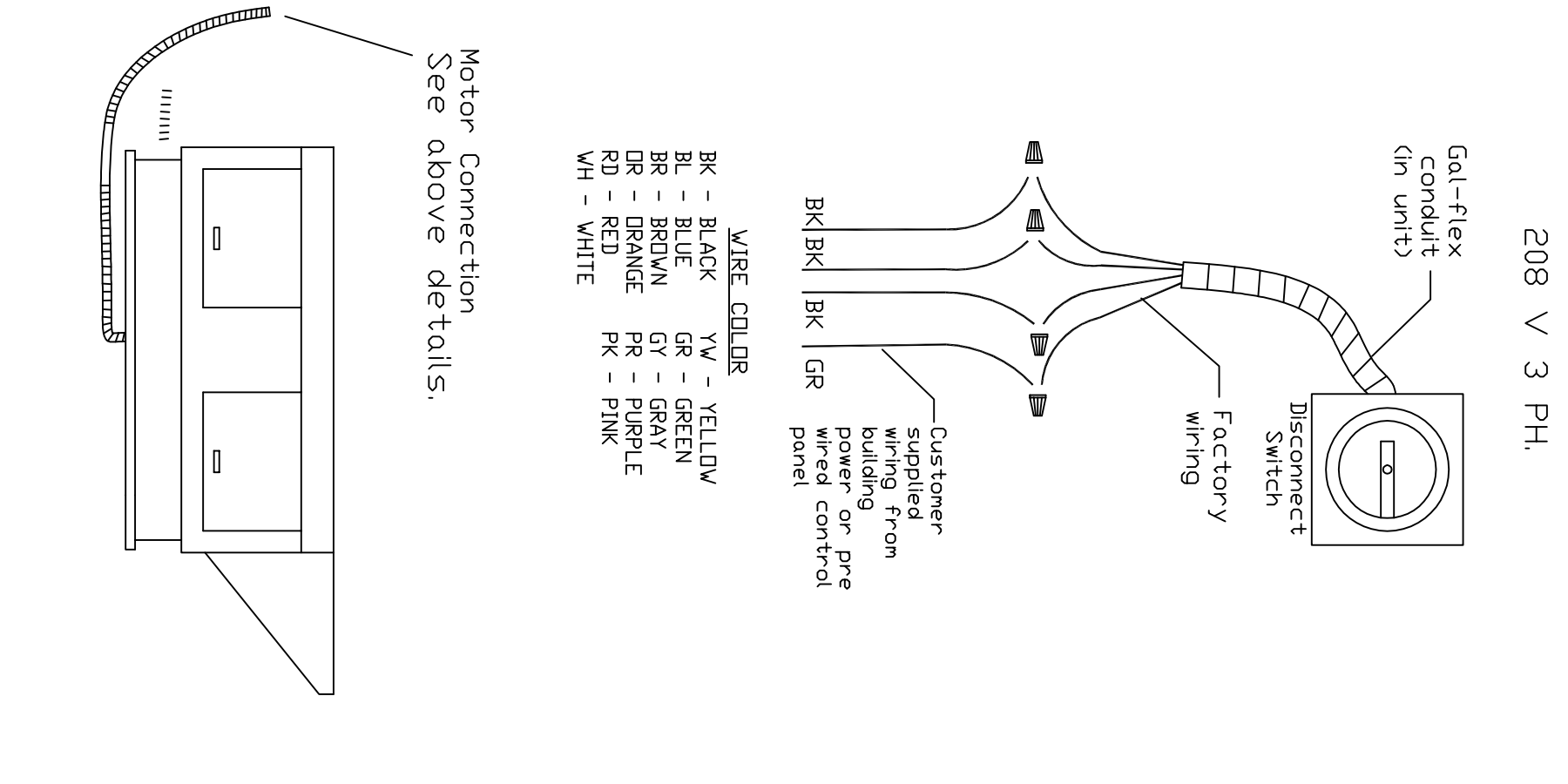
KSF-1 PRE-SECURITY



UNIT INFORMATION:

MODEL	WEIGHT	UNIT DIMENSIONS	GAS PRESSURE	GAS CONNECTION	CFM RANGE	FILTER SIZE & QTY	MAX. FILTER VELOCITY
D-250-G10	1595 LBS/74-3/8	27-3/8 29-3/4 26-1/16 3-3/4 44-3/8 7-13/16 34-13/16	14\"/>				

WIRING INFORMATION



- ELECTRICAL PACKAGE NOTES**
1. THE FAN MOTOR MUST BE PROTECTED BY A CIRCUIT BREAKER OR FUSE.
 2. THE FAN MOTOR MUST BE PROTECTED BY A CIRCUIT BREAKER OR FUSE.
 3. THE FAN MOTOR MUST BE PROTECTED BY A CIRCUIT BREAKER OR FUSE.
 4. THE FAN MOTOR MUST BE PROTECTED BY A CIRCUIT BREAKER OR FUSE.

REVISIONS

NO.	DESCRIPTION	DATE

CAPTIVE-AIR
NORTHEAST REGIONAL OFFICE
www.captiveair.com
105 EAST STREET SUITE #3, CHICOPEE, MA 01020 P: (888) 594-8390 F: (413) 594-9774
E-Mail: reg37@captiveair.com

Portland Jet Port
Portland, ME

K-1 SHEET# 1 of 2

HOOD DETAIL PLAN

DATE: 12/18/08
DWG#: 696649
DRAWN BY: TSH
SCALE: NONE

<p>M4</p>	<p>LLOYD ARCHITECTS Two High Cliff, Plymouth South MA 02360 TEL: (508) 746-4446 FAX: (508) 746-4236 MAIL: info@lloydarch.com</p>	<p>Building Engineering Resources, Inc. 28 Main Street, Bldg. 31A North Boston, MA 02156 TEL: (617) 234-0200 FAX: (617) 234-0200 E: info@ber-engineering.com</p>	<p>1.2M Foodservice Design Group 8111 Cornwell Park Drive Glen Burnie, MD 21061 TEL: (410) 863-1302 FAX: (410) 863-1308</p>	<p>HMS Host 6600 Rockledge Drive Bethesda, MD 20817 TEL: (202) 492-4925 FAX: (202) 492-4175</p>	<p>The Shipyard Main Terminal - Lower Level Portland International Jetport 1001 Westbrook Street Portland, ME 04102</p>	<p>THE SHIPYARD BREWING COMPANY 88 Academy Street Portland, ME 04102 (603) 788-8888</p>
------------------	---	---	--	--	--	--