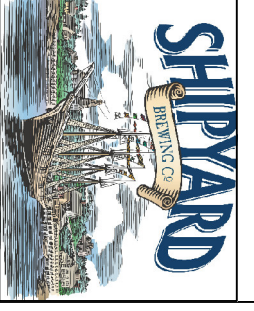


Item	Date



THE SHIPYARD
BREWING COMPANY
88 Meeting Street
Portland, ME 04101
(603) 788-0844



The Shipyard
Main Terminal - Lower Level
Portland International Jetport
1001 Westbrook Street
Portland, ME 04102

JMS Host
6600 Rockledge Drive
Bethesda, MD 20817
Ph: (240) 664-4655
Fax: (240) 694-1175

L2M Foodservice
DESIGN GROUP
811 Cromwell Park Drive
Glen Burnie, MD 21061
Ph: (410) 863-1802
Fx: (410) 863-1808

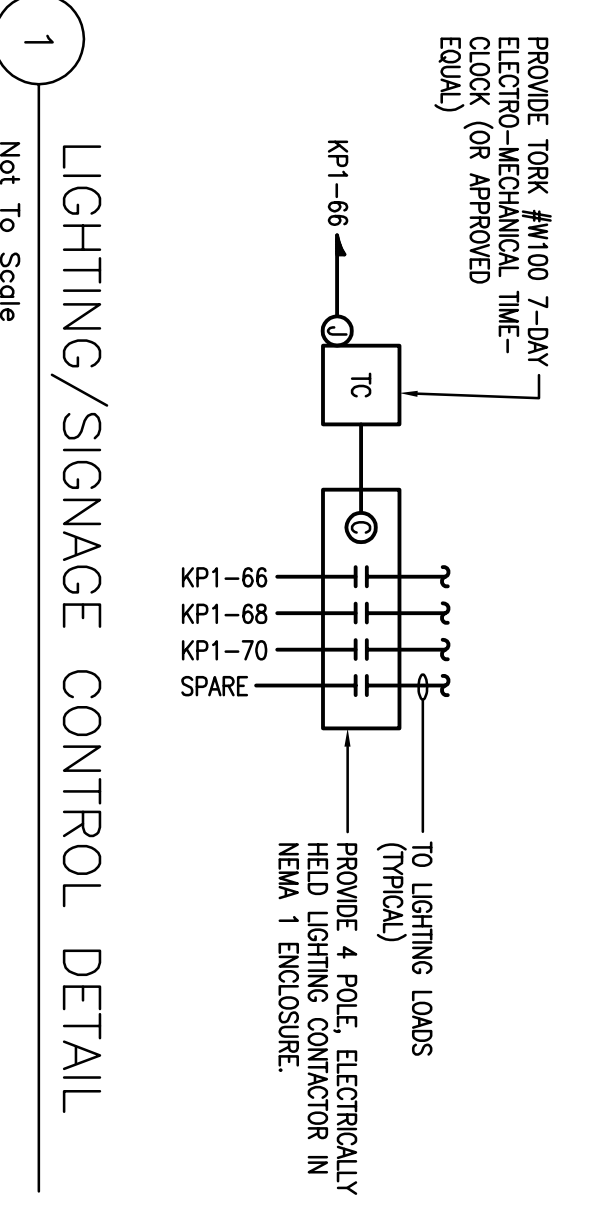
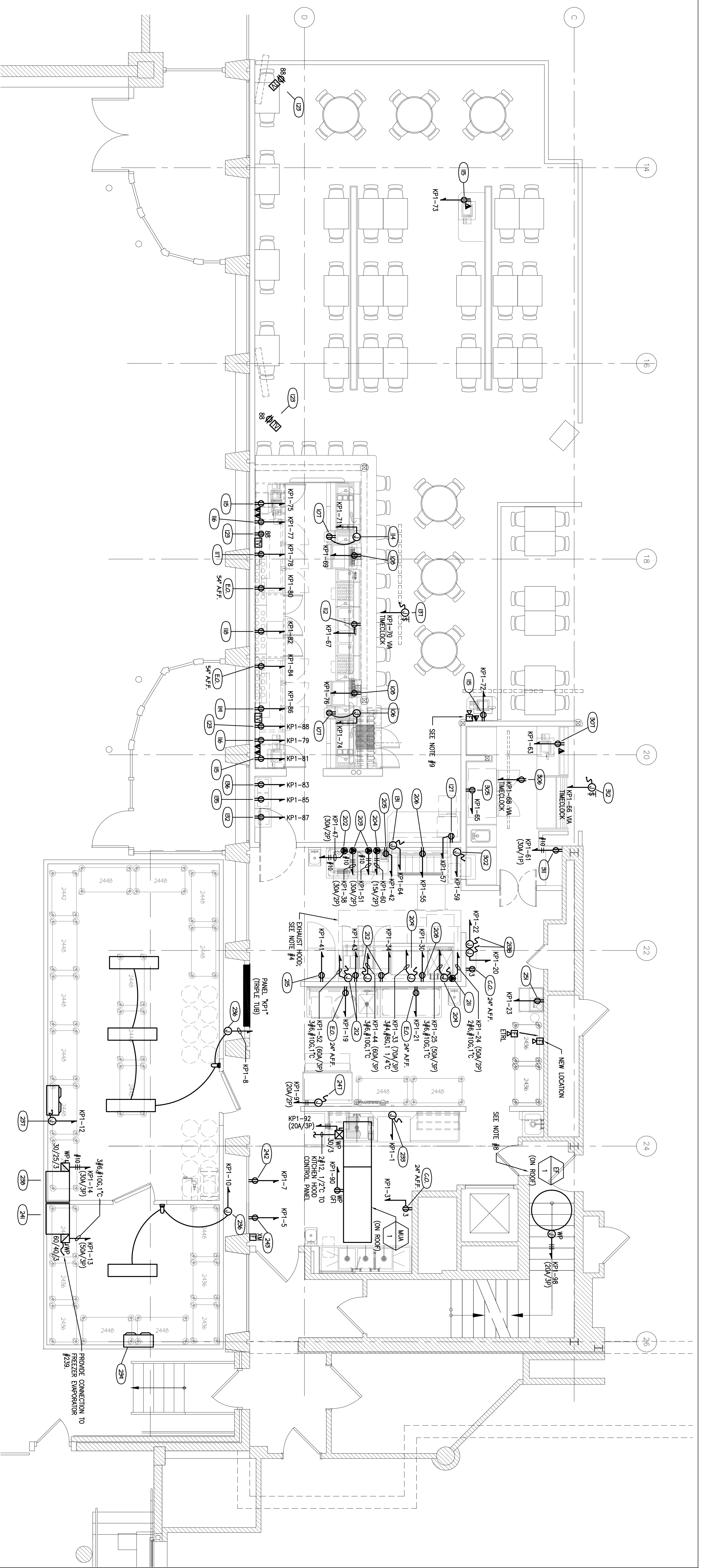
Building Engineering
Resources, Inc.
28 Main Street, Bldg. 43A
North Easton, MA 02556
Tel: (508) 234-0200
Fax: (508) 234-0202
E: ber@buildingresources.com

LLOYD ARCHITECTS
Two High Cliff, Plymouth MA 02360
T E L E P H O N E
(5 0 8) 7 4 4 - 4 4 6 6
(5 0 8) 7 4 4 - 4 4 6 6
(5 0 8) 7 4 4 - 4 4 6 6
(5 0 8) 7 4 4 - 4 4 6 6
l l o y d a r c h . c o m
l l o y d a r c h . c o m
l l o y d a r c h . c o m
l l o y d a r c h . c o m

Job No.: 07417
Scale: 1/4" = 1'-0"
Issued: 12/11/07

Electrical
Power Plan

E4



1 LIGHTING/SIGNAGE CONTROL DETAIL
Not To Scale

- REFER TO FOOD SERVICE DRAWINGS FOR EQUIPMENT TYPES AND DEVICE MOUNTING HEIGHTS.
- GENERAL NOTES:
1. SEE EQUIPMENT SCHEDULE ON DRAWING E5 FOR MOUNTING HEIGHTS OF ALL DEVICES.
 2. ALL RECEPTACLES WITHIN FOOD SERVICE AREAS SHALL BE GROUND FAULT CIRCUIT INTERRUPTER (GFCI) TYPE PER NEC ARTICLE 210.8(B)(2).
 3. COORDINATE EXACT REQUIREMENTS OF WALK-IN COOLER/FREEZER WITH EQUIPMENT SUPPLIER. E.C. SHALL BE RESPONSIBLE FOR ALL WIRING, CONDUIT, AND INTERNAL PARTS AS NECESSARY.
 4. PROVIDE 3/4" CONDUIT WITH PULL STRING FROM EACH POS. TERMINAL AND REMOTE PRINTER LOCATION TO BACKBOARD AT MANAGER'S DESK AND INSTALLED BY TENANTS VENDOR.
 5. E.C. SHALL COORDINATE ALL FINAL POWER LOCATIONS FOR KITCHEN EQUIPMENT WITH EQUIPMENT SHOP DRAWINGS AS PROVIDED BY TENANT'S VENDOR.
 6. COLOR AND TYPE OF ALL DEVICES AND DEVICE PLATES SHALL BE APPROVED BY ARCHITECT PRIOR TO PURCHASE/INSTALLATION.
 7. ELECTRICAL COMMUNICATIONS, DATA SECURITY, AND NETWORKING SHALL BE INSTALLED IN ACCORDANCE WITH THE AUTHORITY HAVING JURISDICTION.
 8. EXHAUST FAN #1 WILL BE FURNISHED WITH ELECTRICAL DISCONNECT SWITCH. E.C. SHALL BE RESPONSIBLE FOR CIRCUITRY.
 9. CONNECT TO BUILDING INITIATING ALARM CIRCUIT.

Shipyards Brewery, Portland, ME