

| Item | Date |
|----------|----------|
| Progress | 12/06/07 |



THE SHIPYARD
BREWING COMPANY
66 Mainport Street
Portland, ME 04101
(603) 799-0044

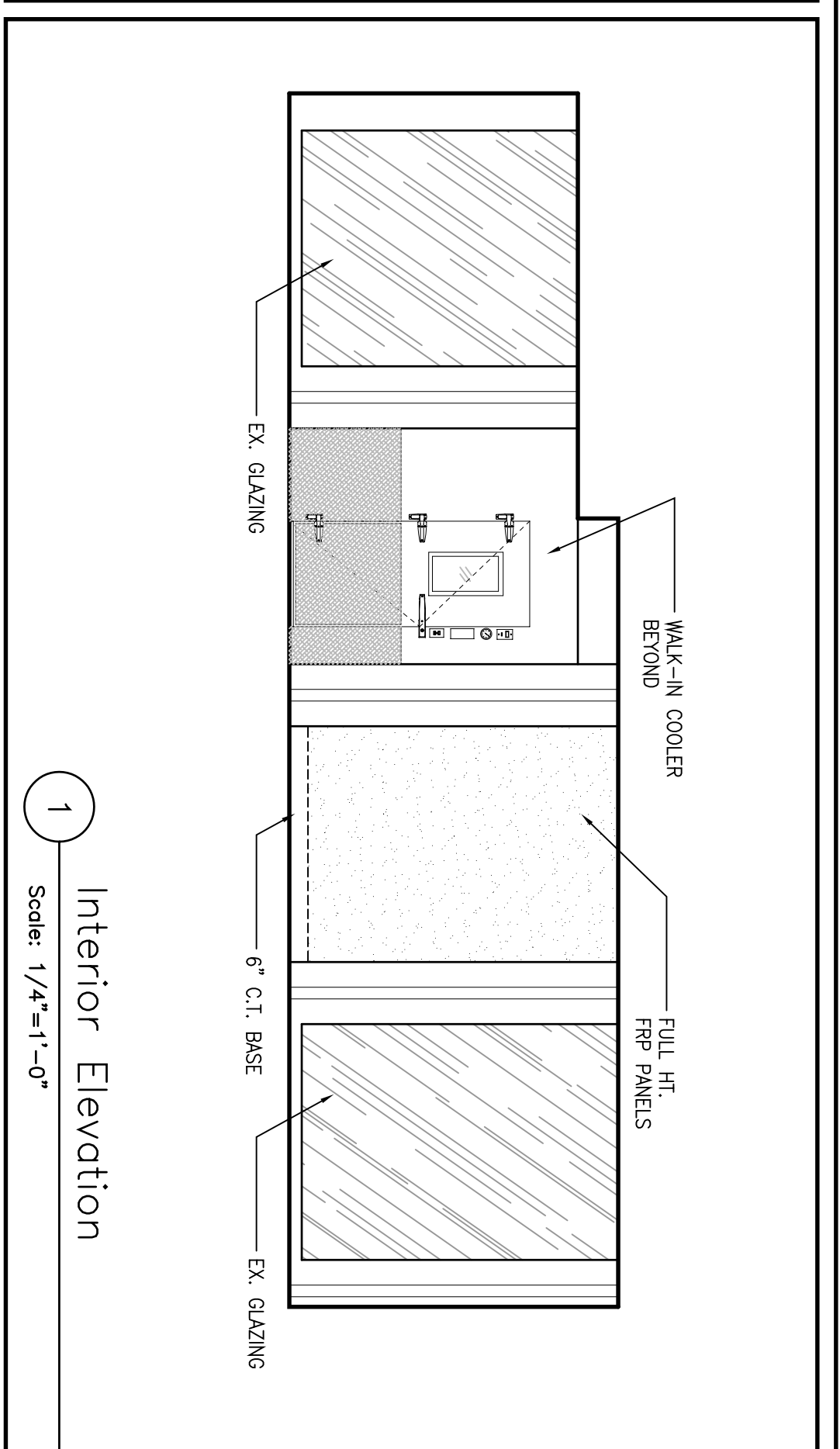
The Shipyard
Main Terminal - Lower Level
Portland International Jetport
1001 Westbrook Street
Portland, ME 04102

HMS Host
6600 Rockledge Drive
Bethesda, MD 20817
Ph: (240) 664-4055
Fax: (240) 594-4175

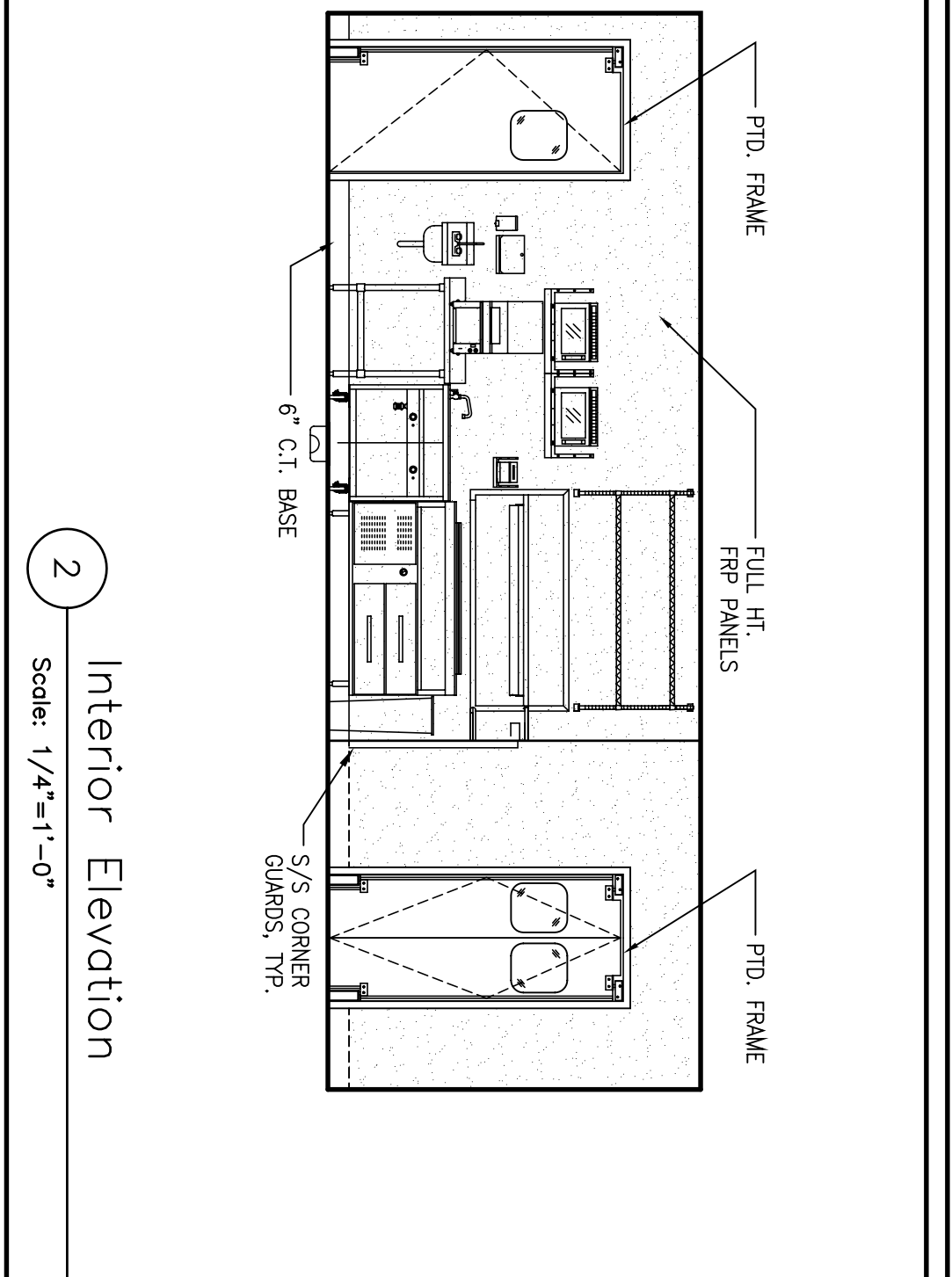
**L2M Foodservice
DESIGN GROUP**
811 Cromwell Park Drive
Glen Burnie, MD 21061
Ph: (410) 863-1302
Fx: (410) 863-1308
E: info@l2mdesign.com

LLOYD ARCHITECTS
Two High Cliff, Plymouth MA 02360
T E L E P H O N E : (5 0 8) 7 4 6 - 4 6 4 6
F A X : (5 0 8) 7 4 6 - 4 6 4 7
E M A I L : info@lloydarch.com

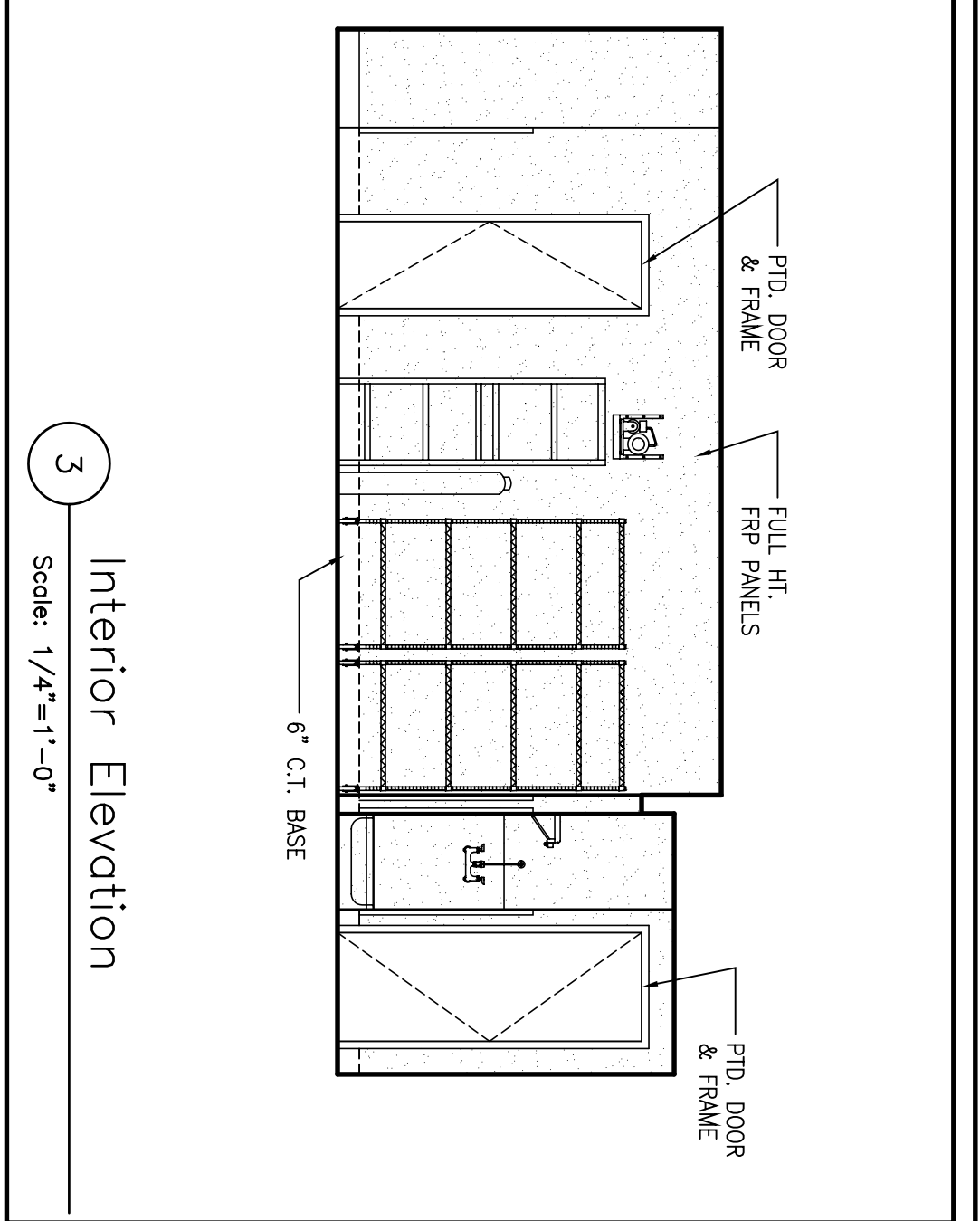
Job No.: 07417
Scale: As noted
Issued: 12/11/07
Interior Elevations
A3.0



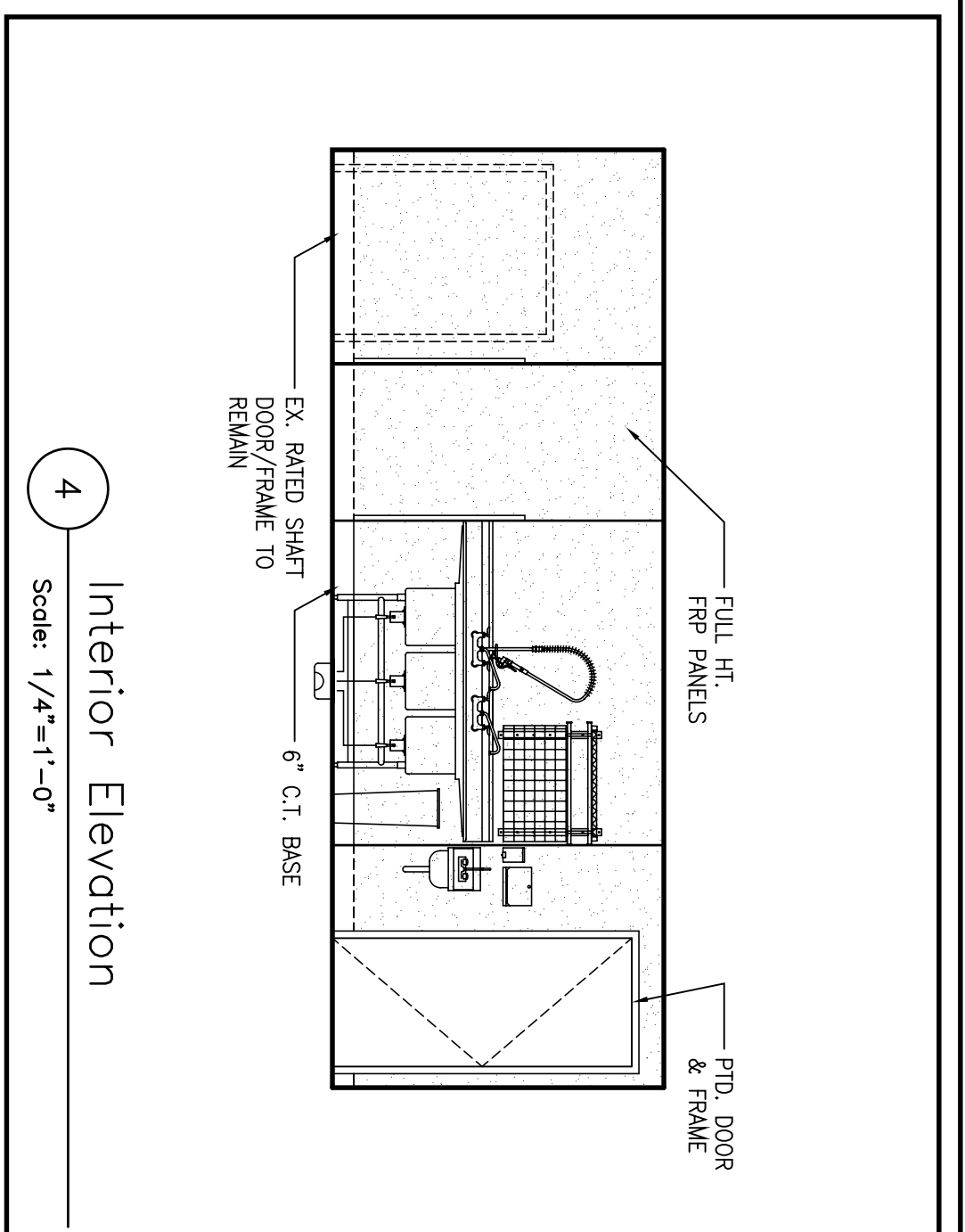
1 Interior Elevation
Scale: 1/4"=1'-0"



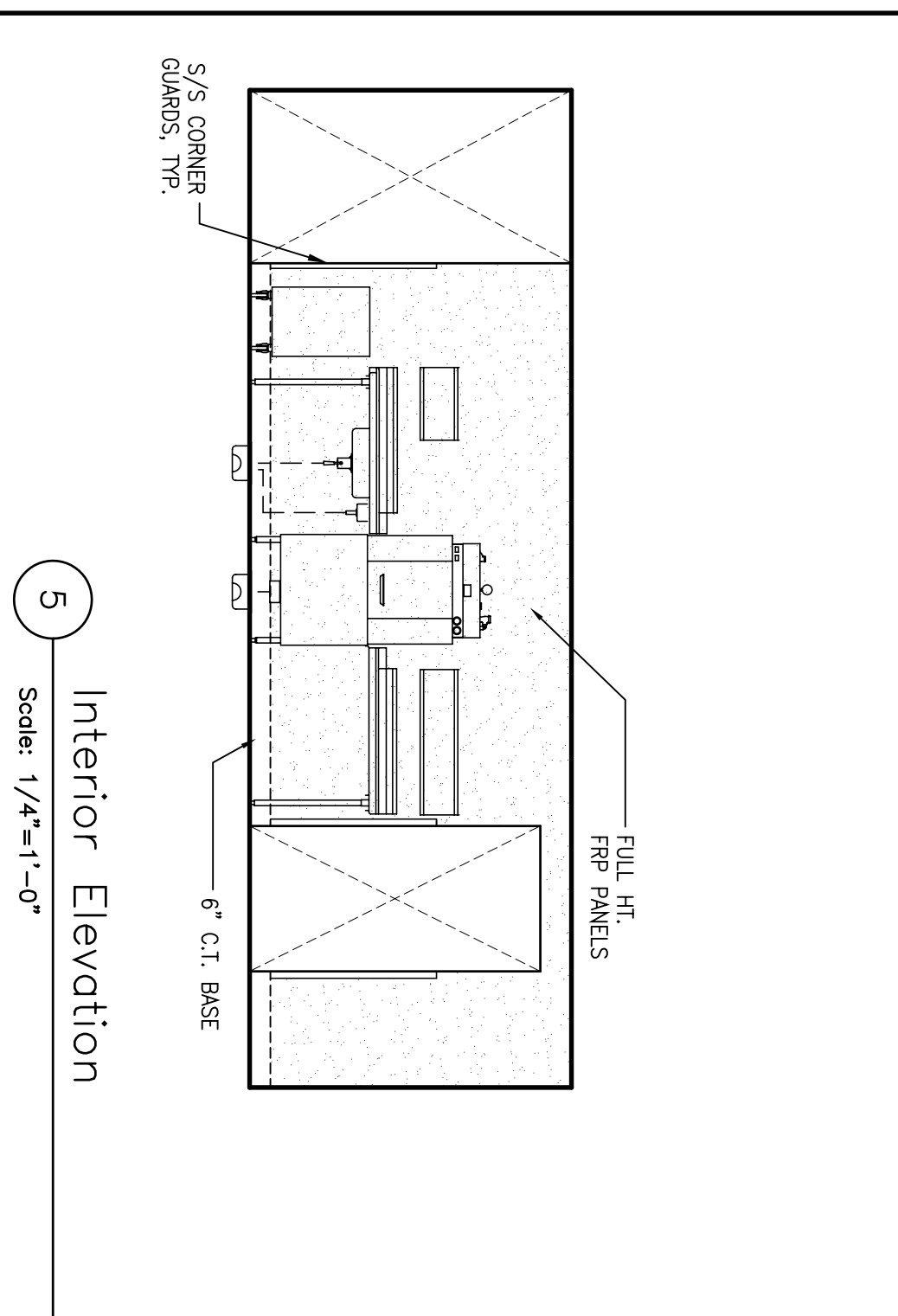
2 Interior Elevation
Scale: 1/4"=1'-0"



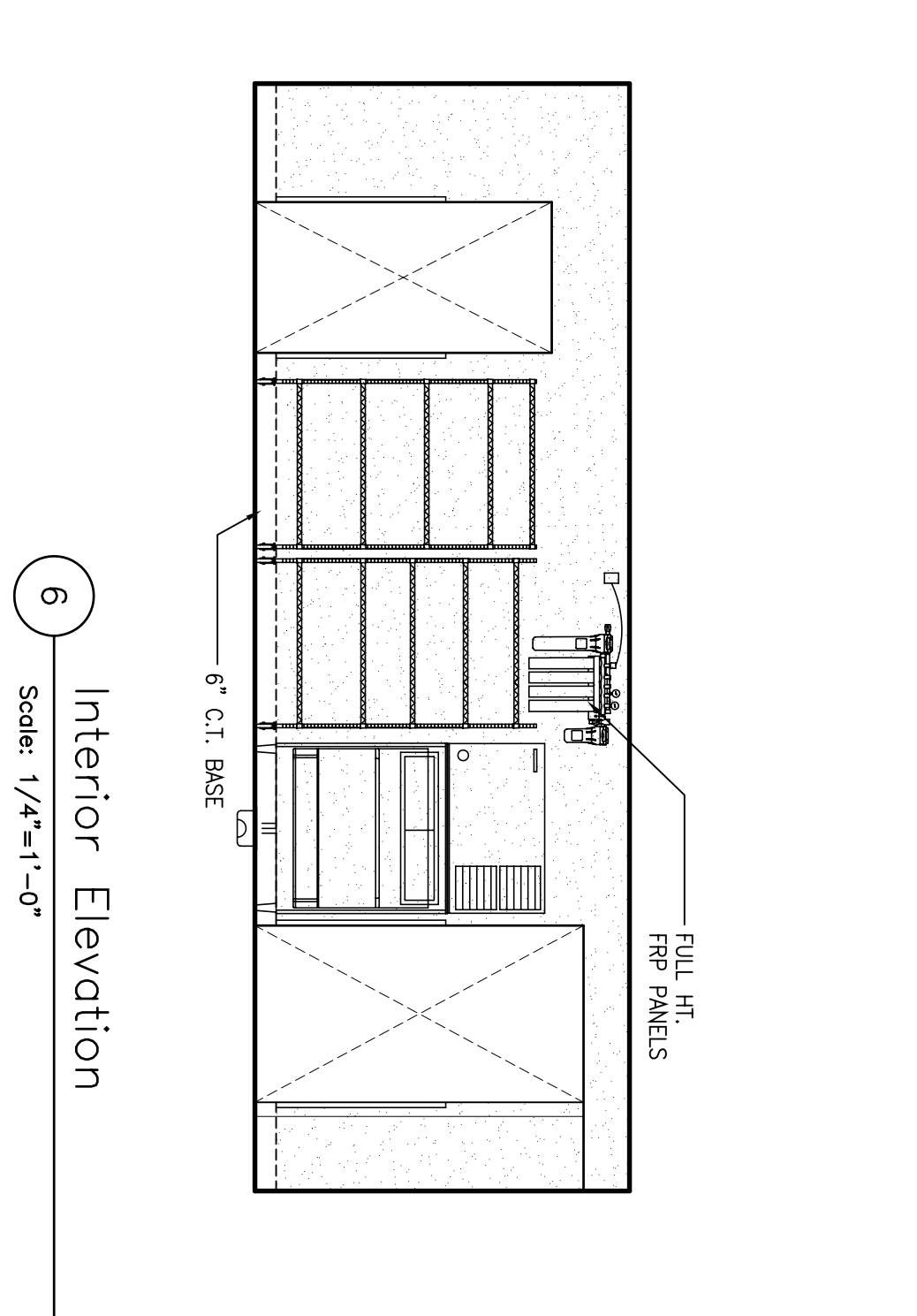
3 Interior Elevation
Scale: 1/4"=1'-0"



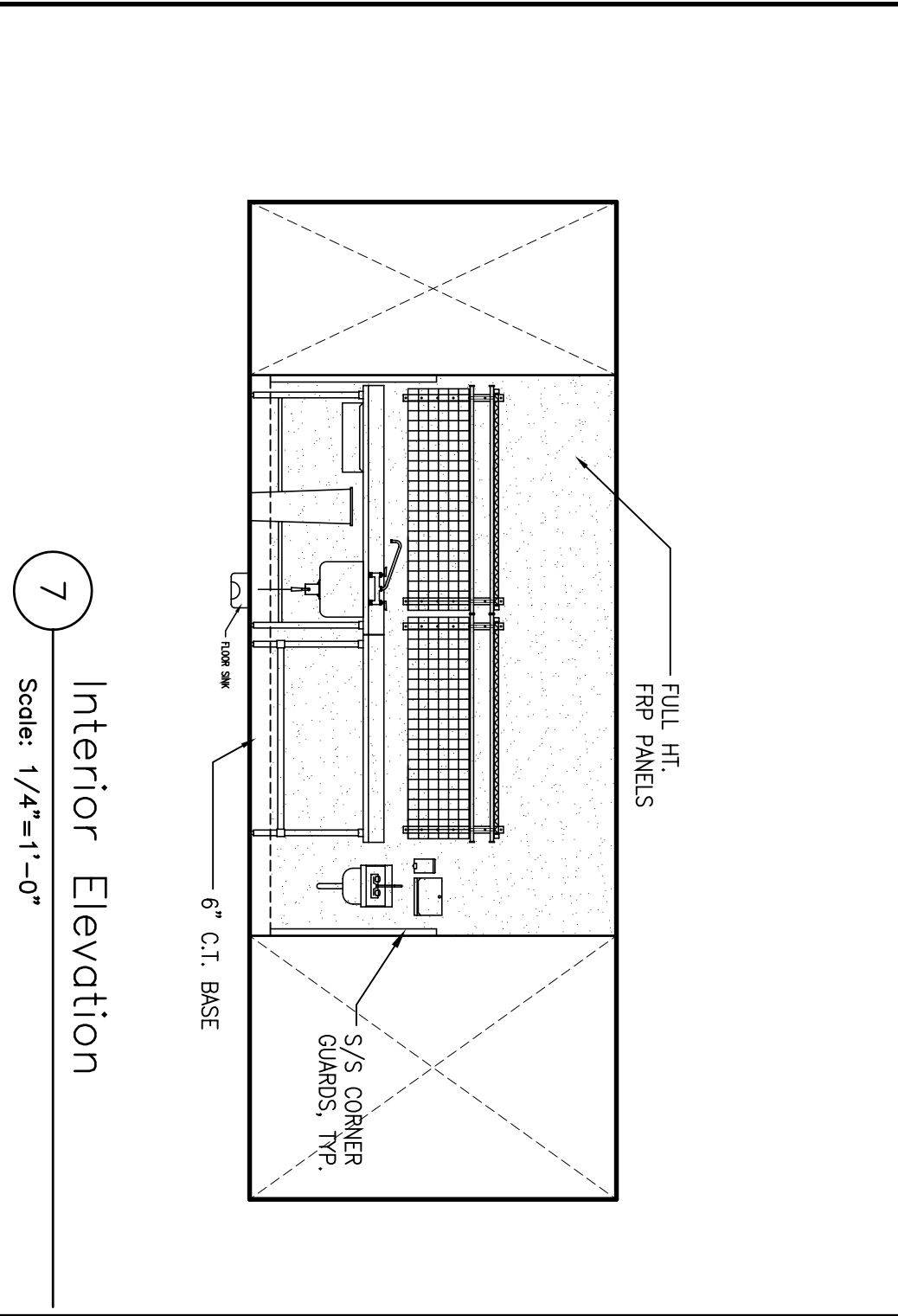
4 Interior Elevation
Scale: 1/4"=1'-0"



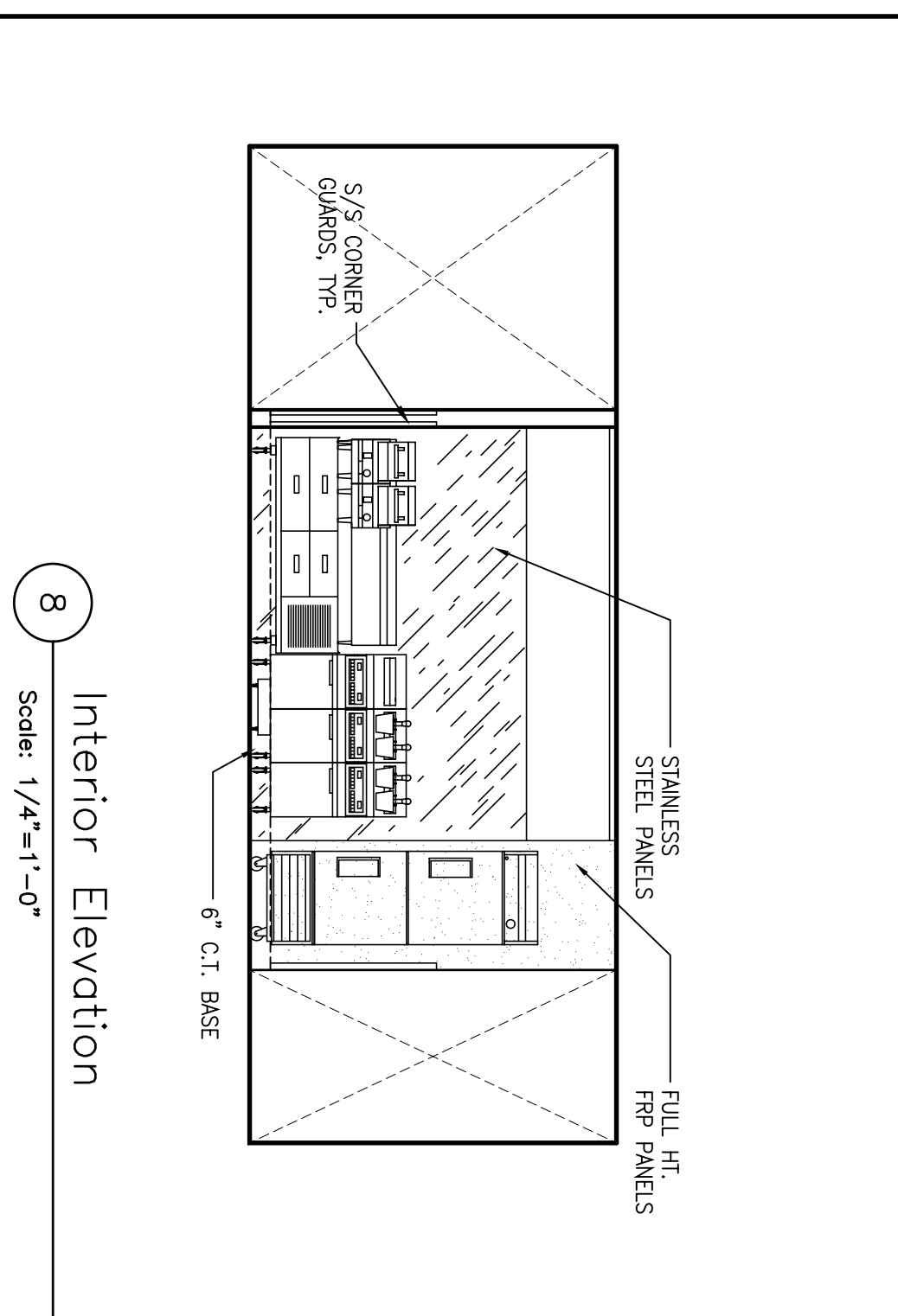
5 Interior Elevation
Scale: 1/4"=1'-0"



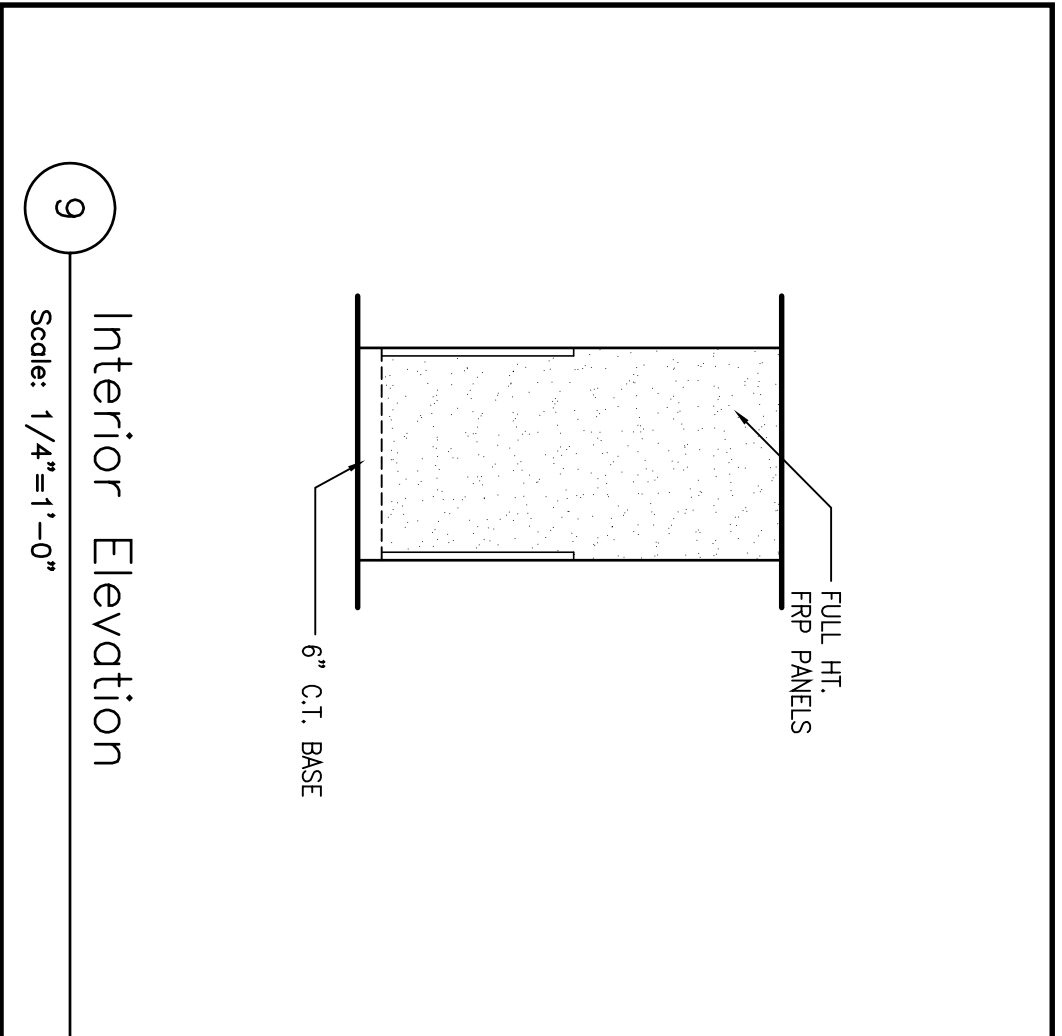
6 Interior Elevation
Scale: 1/4"=1'-0"



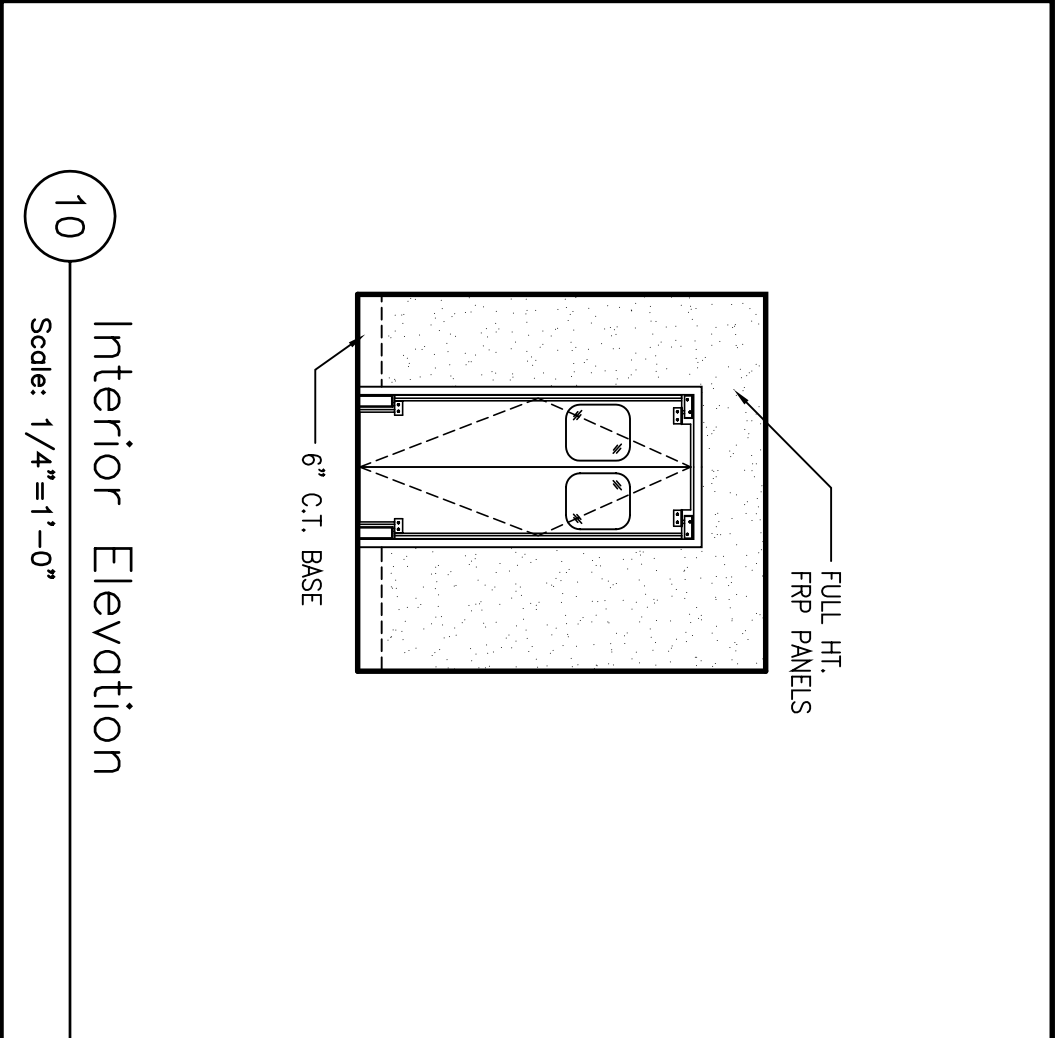
7 Interior Elevation
Scale: 1/4"=1'-0"



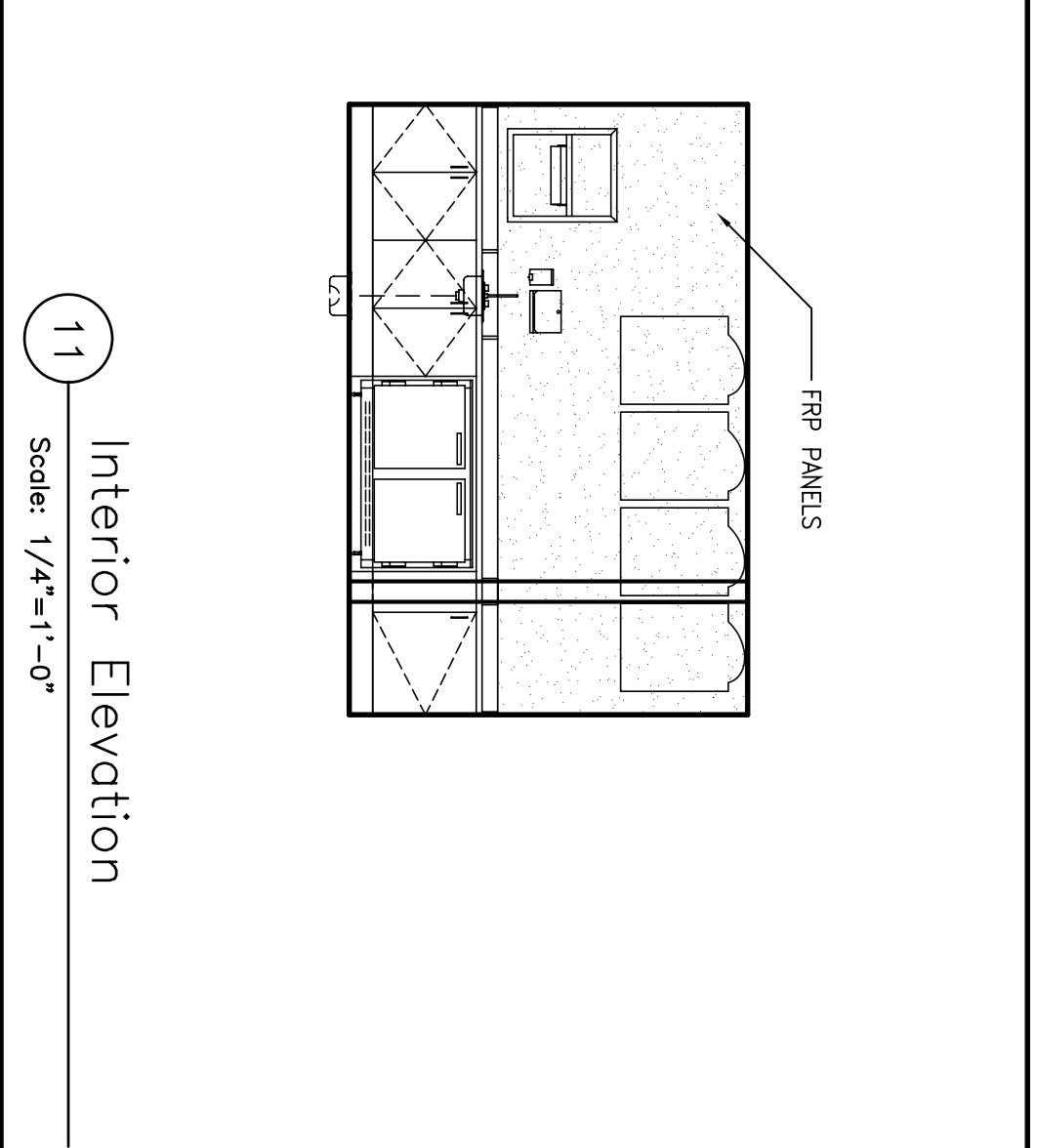
8 Interior Elevation
Scale: 1/4"=1'-0"



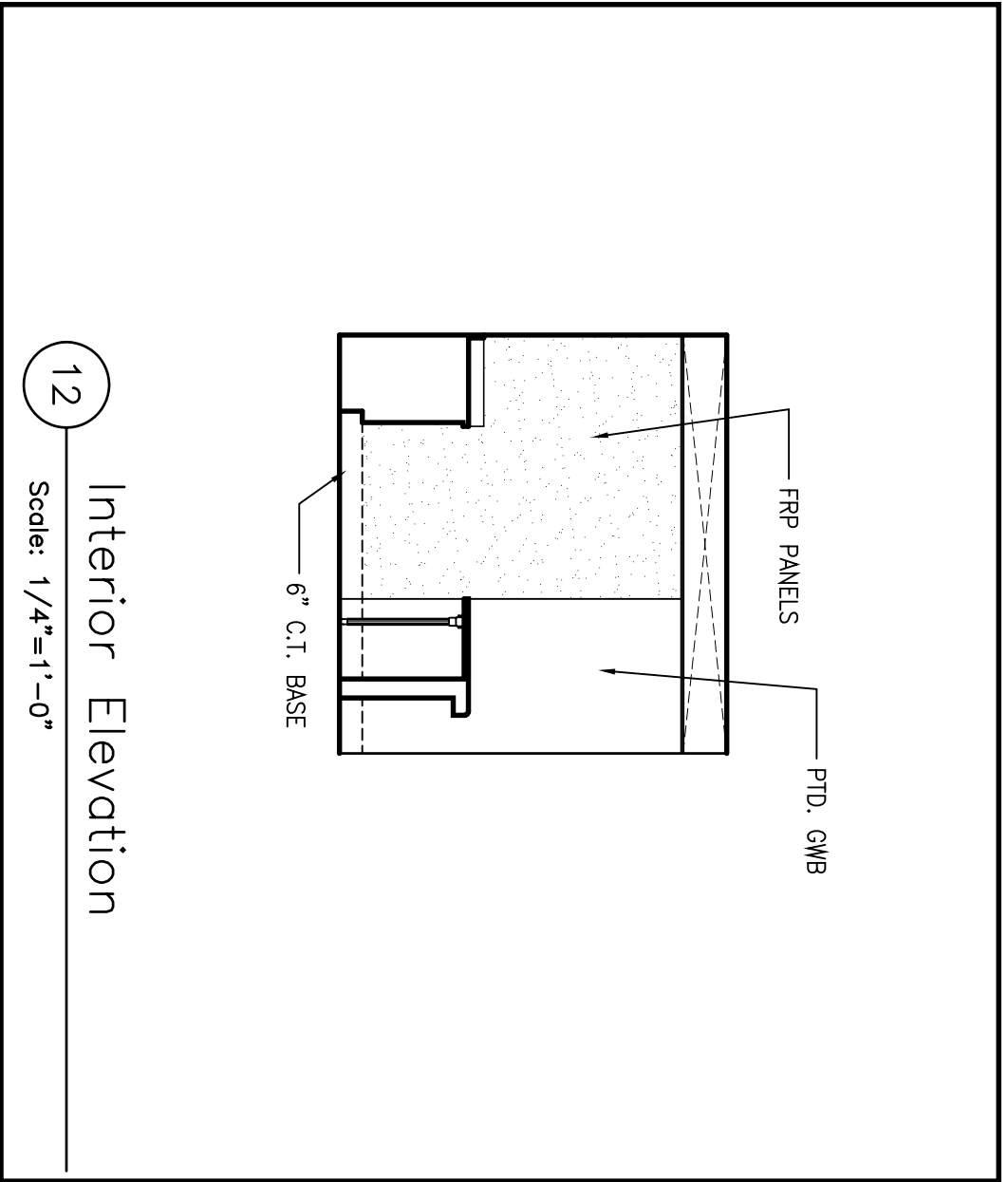
9 Interior Elevation
Scale: 1/4"=1'-0"



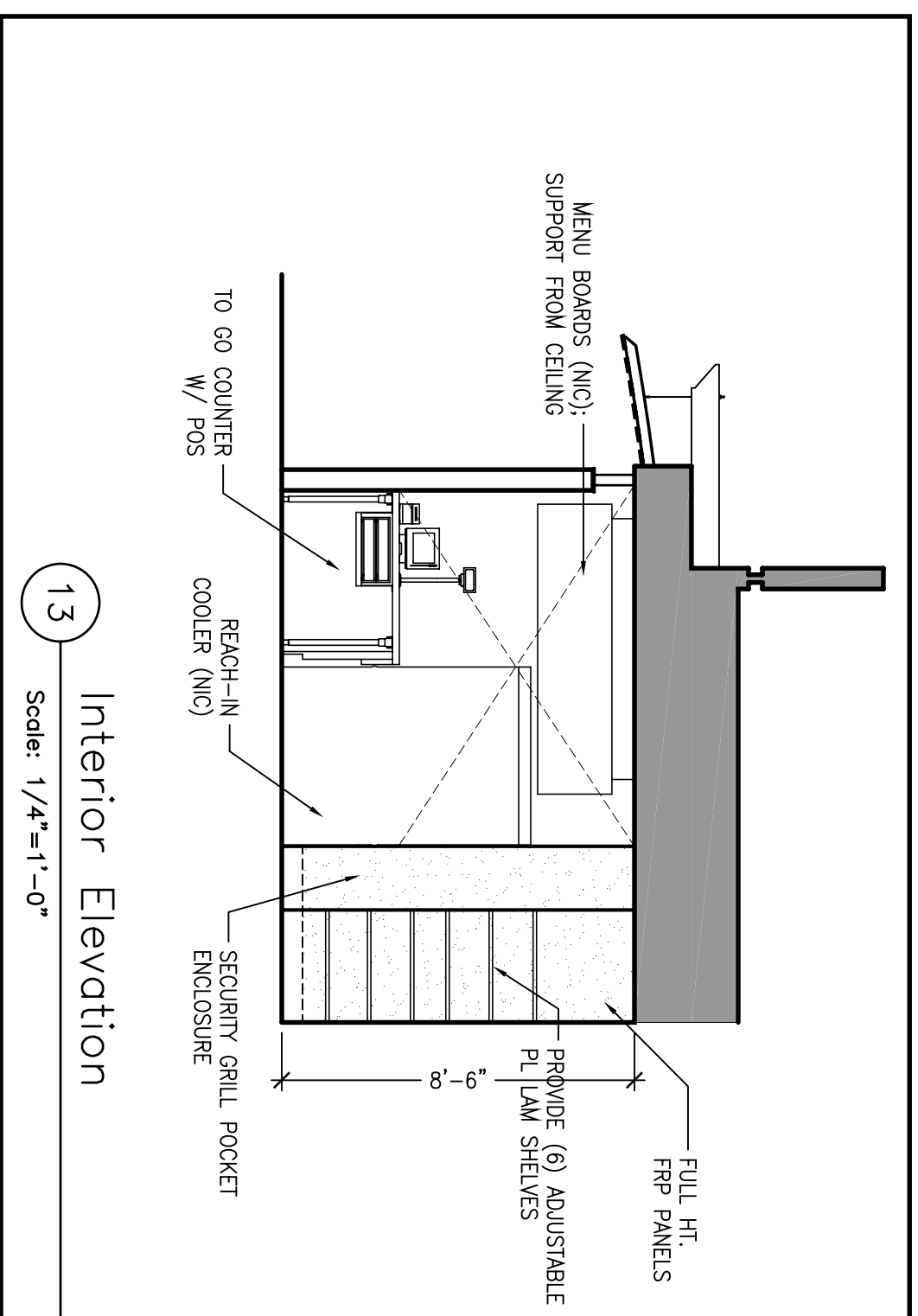
10 Interior Elevation
Scale: 1/4"=1'-0"



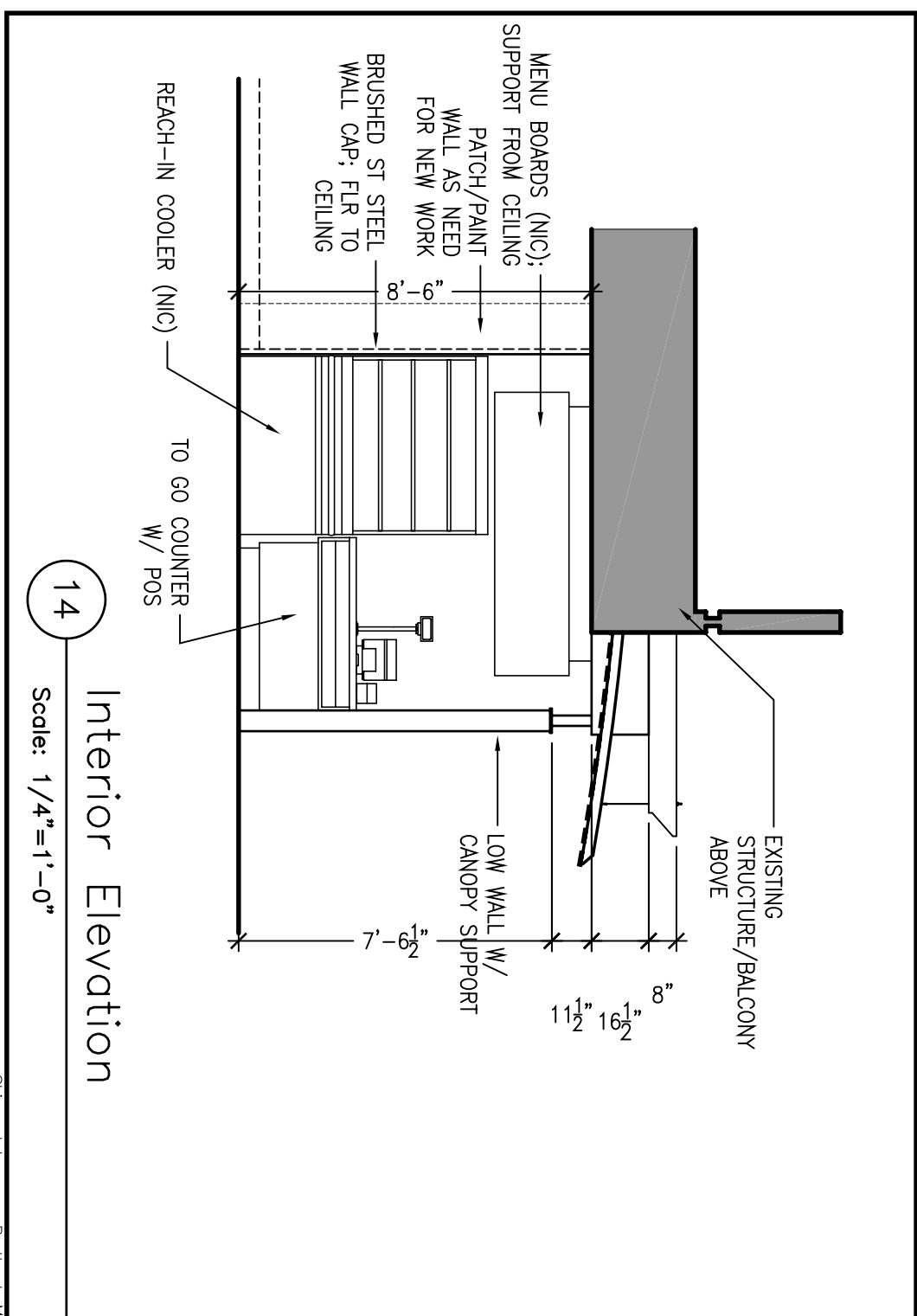
11 Interior Elevation
Scale: 1/4"=1'-0"



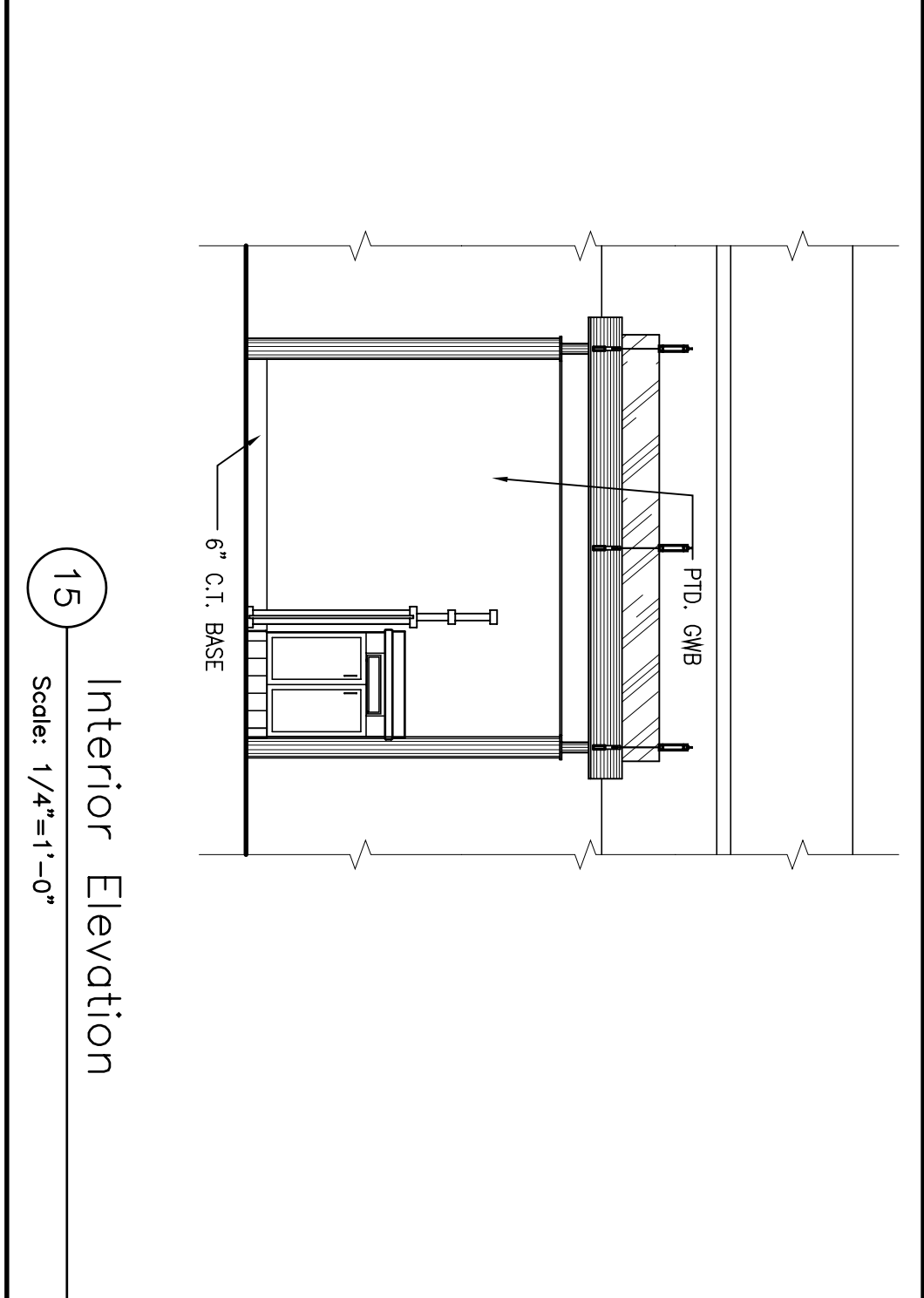
12 Interior Elevation
Scale: 1/4"=1'-0"



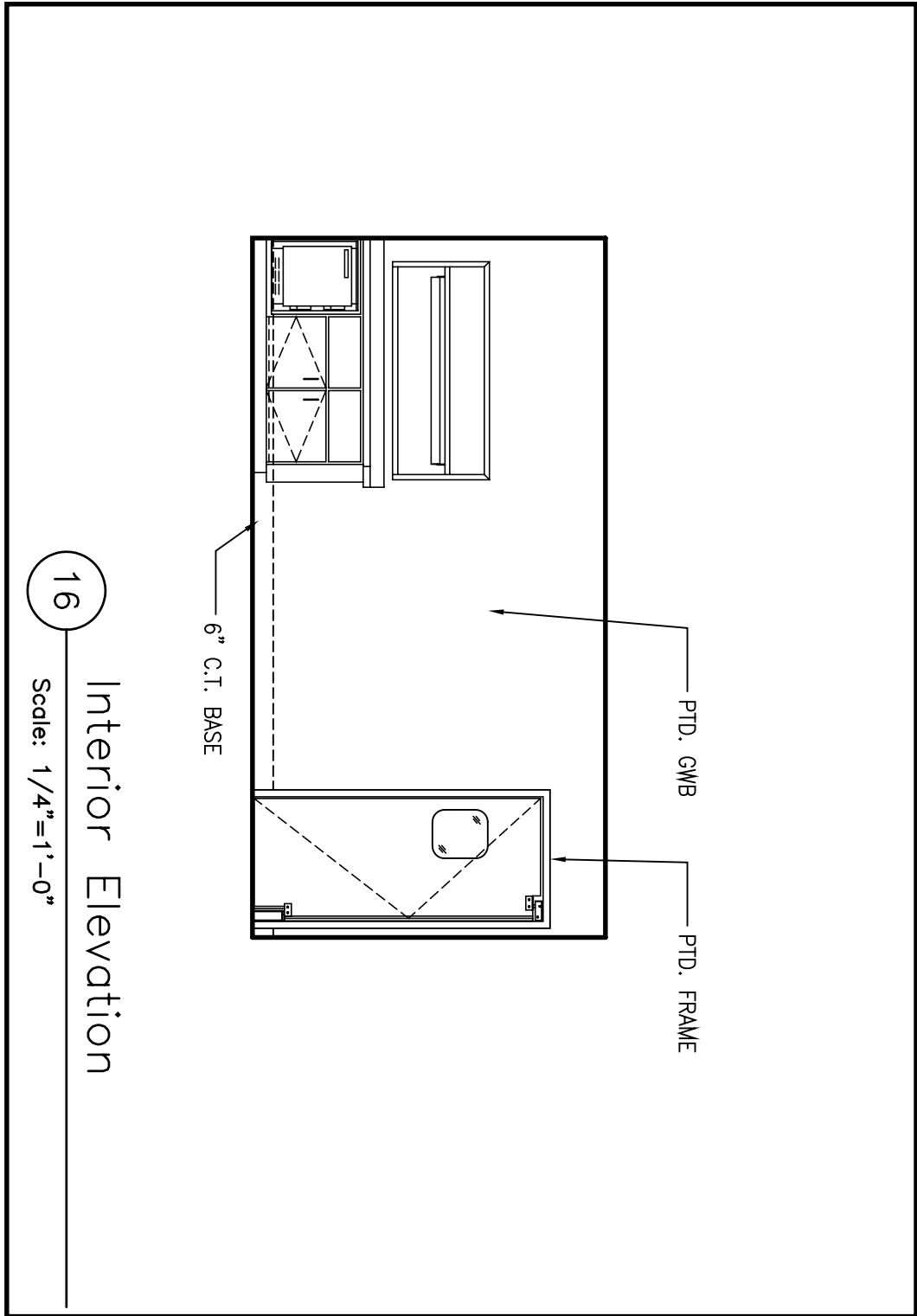
13 Interior Elevation
Scale: 1/4"=1'-0"



14 Interior Elevation
Scale: 1/4"=1'-0"



15 Interior Elevation
Scale: 1/4"=1'-0"



16 Interior Elevation
Scale: 1/4"=1'-0"

Shipyards Terminal - Elevation 03