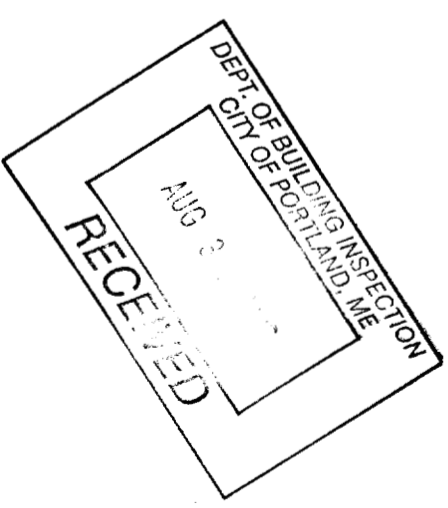
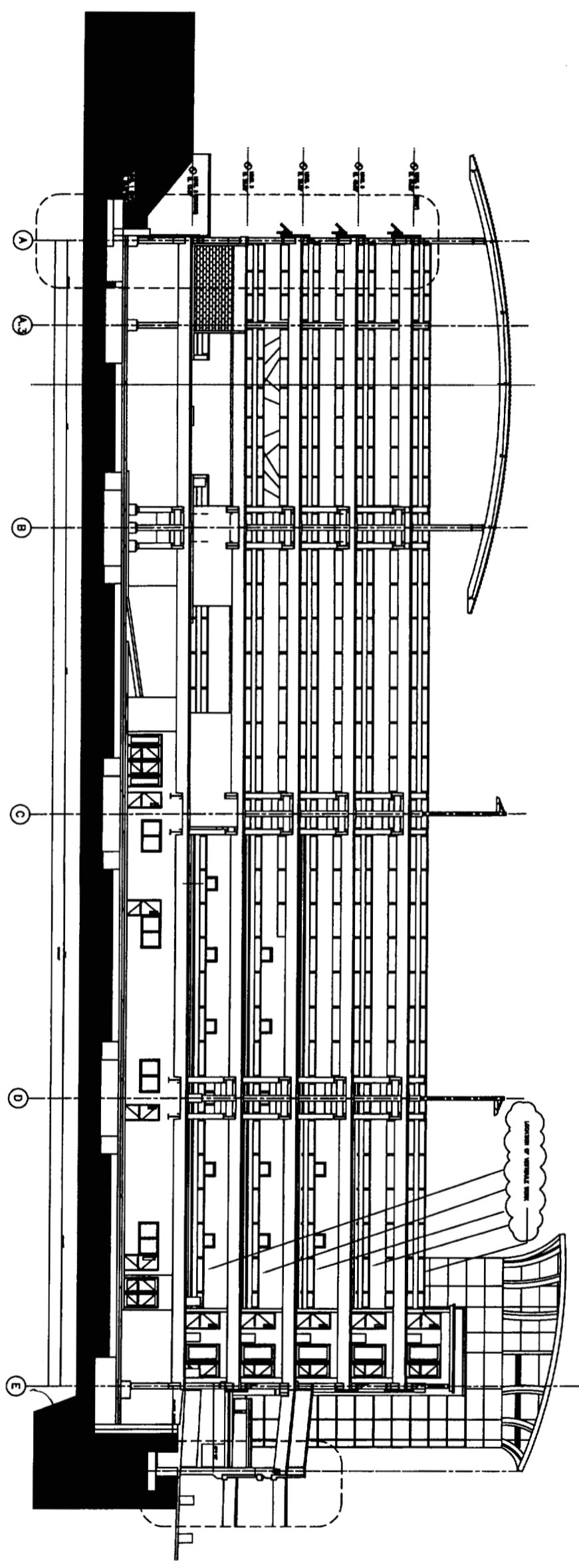


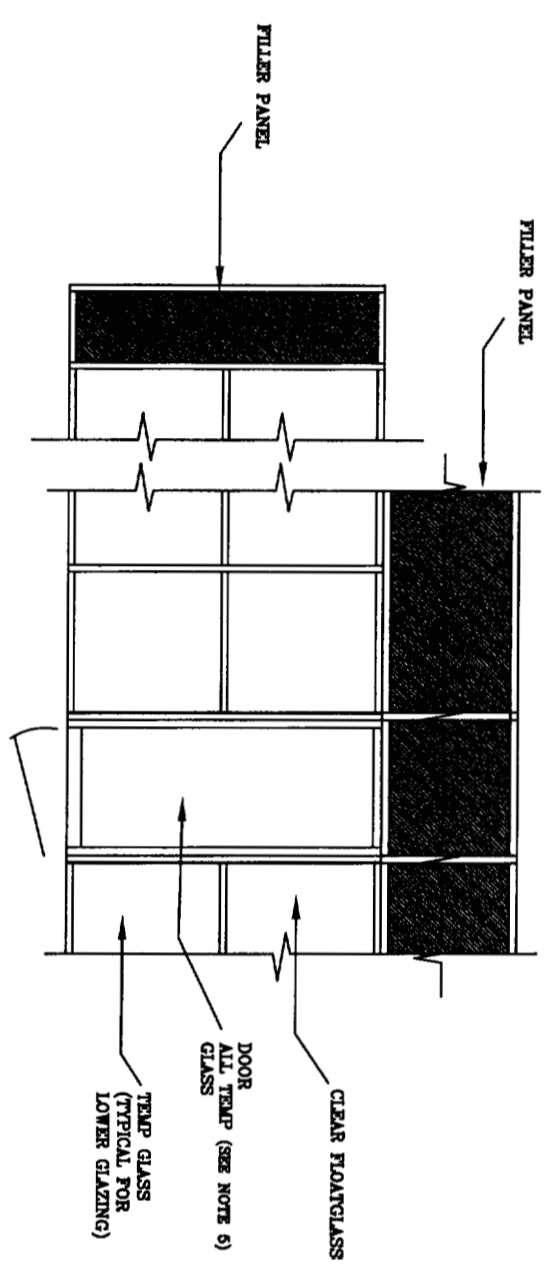
ALUMINUM ENTRANCE VESTIBULES PROJECT NORTH PARKING GARAGE

CONFORMED SET

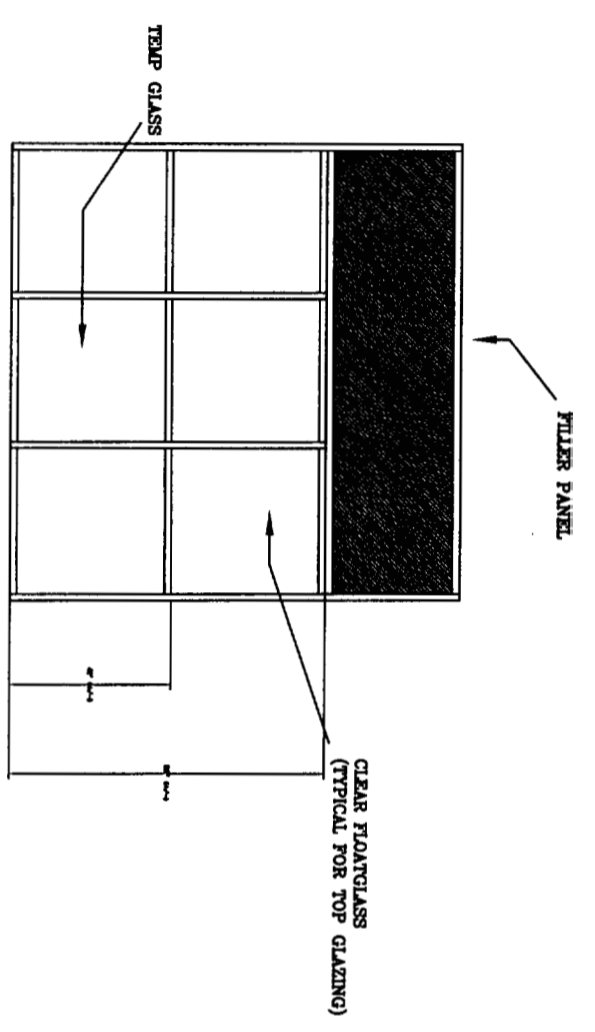


<p>PROJECT NO.:</p> <p>DESIGN ED BY: PHB/JWP</p> <p>DRAWN BY: JWP</p> <p>CHECKED BY: CLA</p> <p>DATE: 8/28/2006</p> <p>SCALE:</p> <p>SHEET NO.:</p> <p style="font-size: 2em; font-weight: bold;">A-1</p>	<p>ALUMINUM ENTRANCE VESTIBULES NORTH PARKING GARAGE</p> <p>Portland International Jetport 1001 Westbrook St. Portland, ME 04102</p>	<p>OVERALL SITE PLAN</p>	<p>Issued for Construction 8/28/2006 Conformed Set includes Addenda 1 & 2 (8/28/2006)</p> <div style="border: 1px solid black; padding: 5px; margin-top: 10px;"> <p>DESCRIPTION</p> </div>
---	--	--------------------------	--

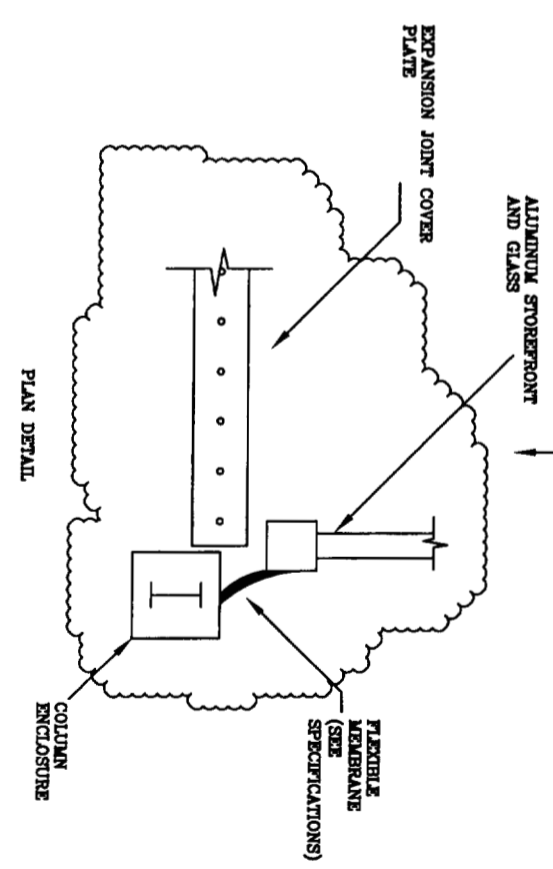
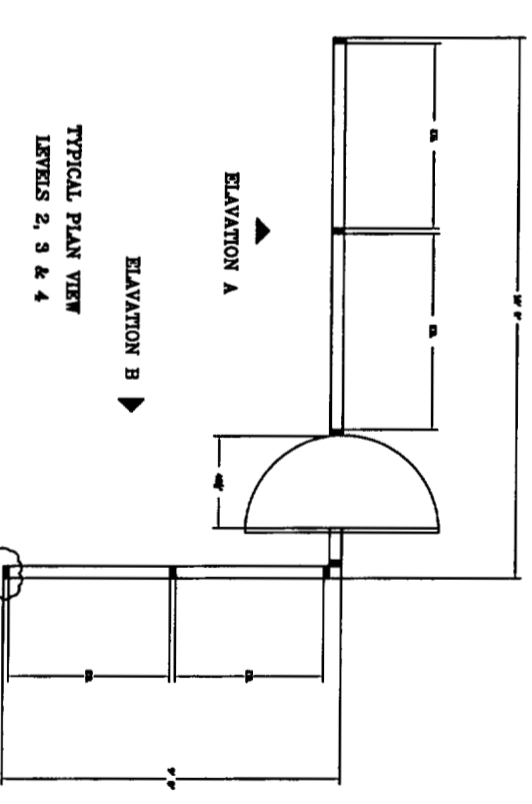




TYPICAL ELEVATION "A"
LEVELS 2, 3 & 4



TYPICAL ELEVATION "B"
LEVELS 2, 3 & 4



- GENERAL NOTES:
- 1) FILLER PANELS WILL BE SCRIBED AND CUT TO FIT CLOSELY TO EXISTING ARCHITECTURAL, STRUCTURAL AND MECHANICAL/ELECTRICAL FEATURES AND ITEMS SUCH AS PRE-CAST CONCRETE STRUCTURAL MEMBERS, COLUMN ENCLOSURES, GAS PIPING & ELECTRICAL CONDUITS.
 - 2) CAULK ALL JOINTS BETWEEN STOREFRONT MEMBERS AND FILLER PANELS, AND ADJACENT STRUCTURE OR MECHANICAL/ELECTRICAL ITEMS
 - 3) ALL DIMENSIONS INDICATED ON DRAWINGS ARE APPROXIMATE AND REQUIRE FIELD VERIFICATION BY THE CONTRACTOR.
 - 4) WHERE REQUIRED, THE OWNER WILL RELOCATE EXISTING SECURITY CAMERAS AND SIGNAGE.
 - 5) SEE SPECIFICATIONS FOR DOOR HARDWARE.

PROJECT NO.	DESIGNED BY: PHB/JVI
DRAWN BY: JVP	CHECKED BY: CLA
DATE: 8/28/2006	SCALE:
SHEET:	SHEET:

A-2
SHEET 2 OF 6

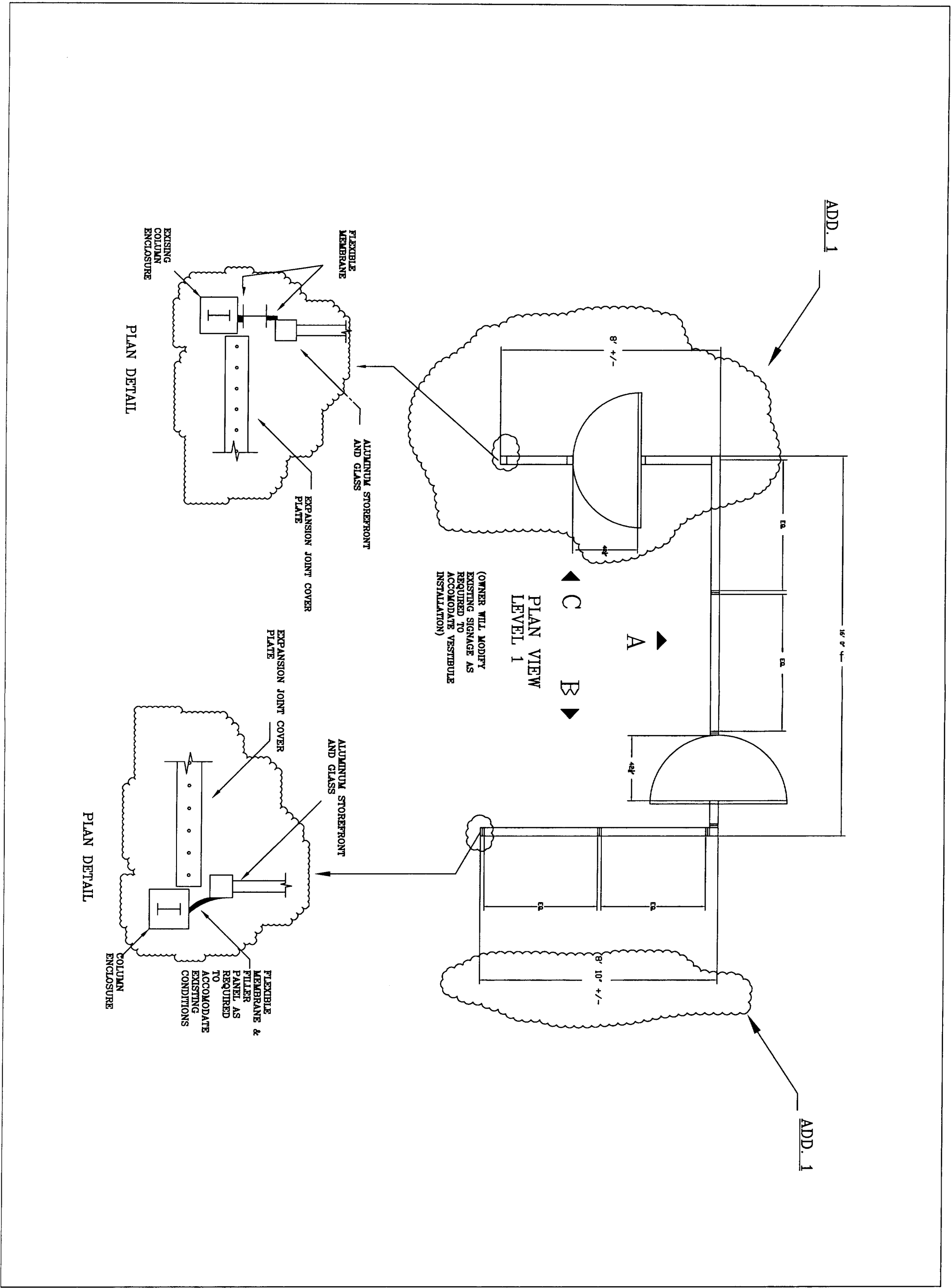
**ALUMINUM ENTRANCE VESTIBULES
NORTH PARKING GARAGE**

**Portland International Jetport
1001 Westbrook St.
Portland, ME 04102**

**ALUMINUM ENTRANCE VESTIBULE
DETAILS LEVELS 2, 3 & 4**

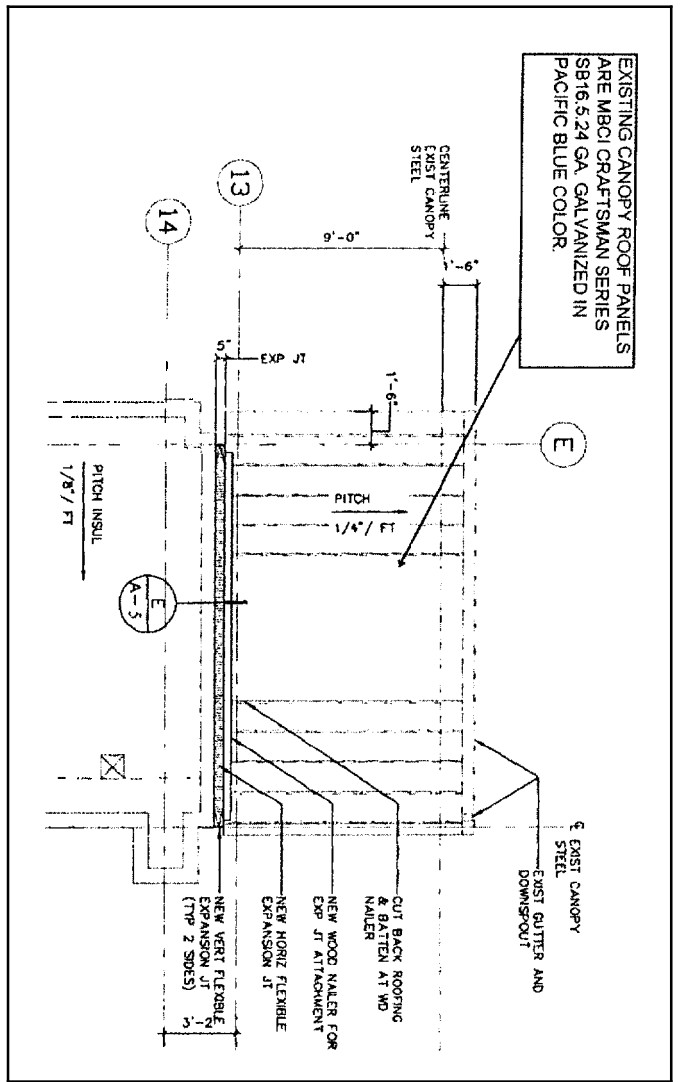


Issued for Construction 8/28/2006 CONFORMED SET INCLUDES ADDENDA (8/28/2006)
DESCRIPTION

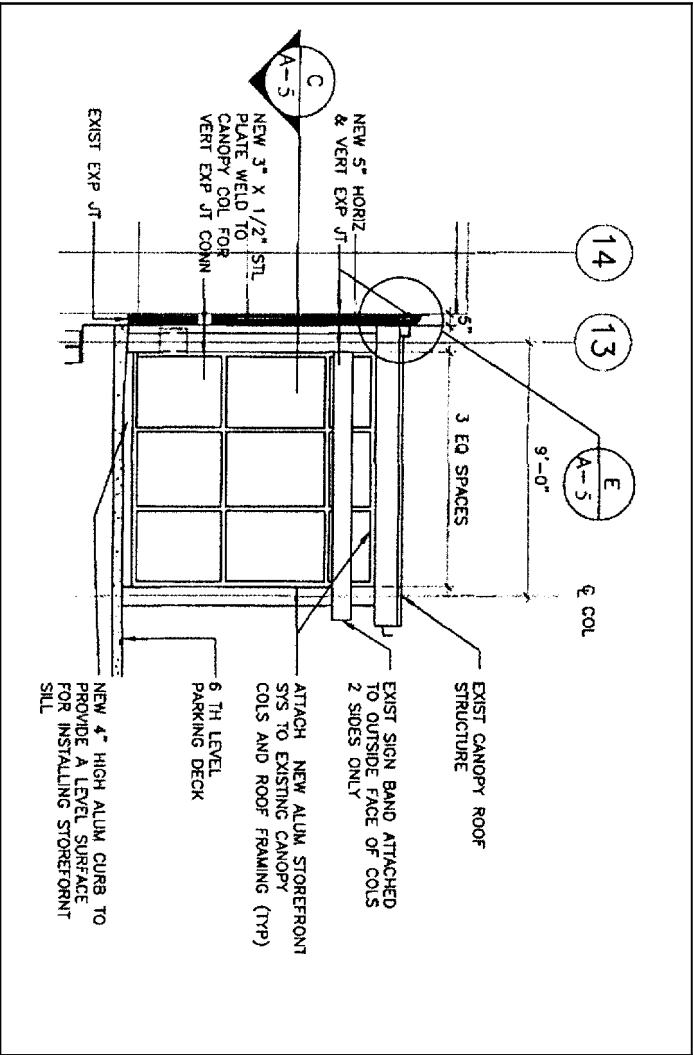


PROJECT NO. DESIGNED BY: P/HB/J/M DRAWN BY: J/M C.K.D. BY: C/A DATE: 8/28/2006 SCALE: SHEET NO.:	ALUMINUM ENTRANCE VESTIBULES NORTH PARKING GARAGE	ALUMINUM ENTRANCE VESTIBULE DETAILS LEVEL 1		Issued for Construction 8/28/2006 Conformed Set includes Addenda 1 & 2 (8/28/2006)
	Portland International Jetport 1001 Westbrook St. Portland, ME 04102			DESCRIPTION

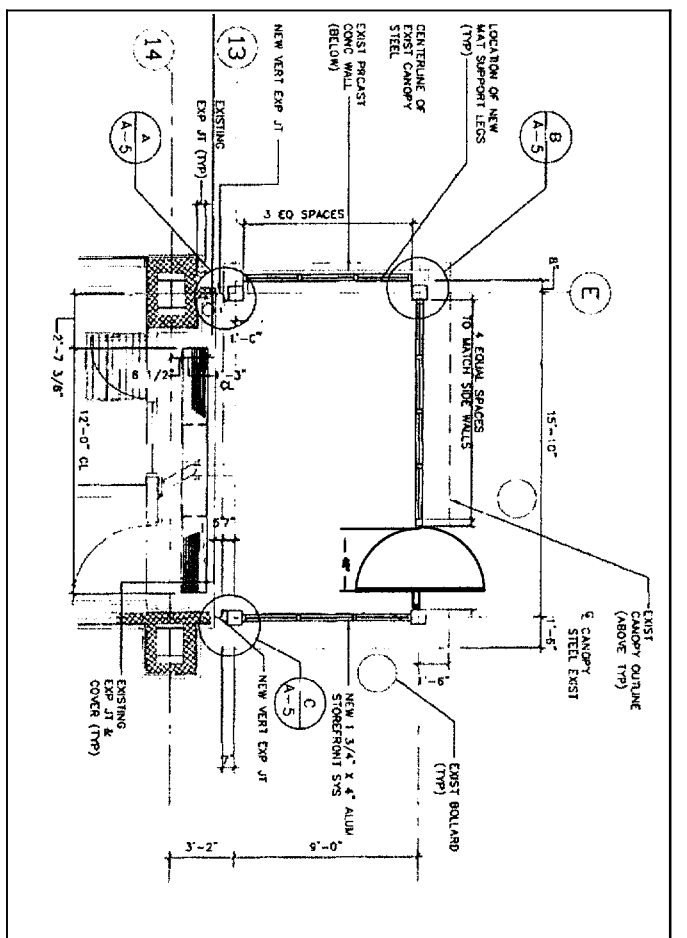
SHEET 3 OF 6
A-3



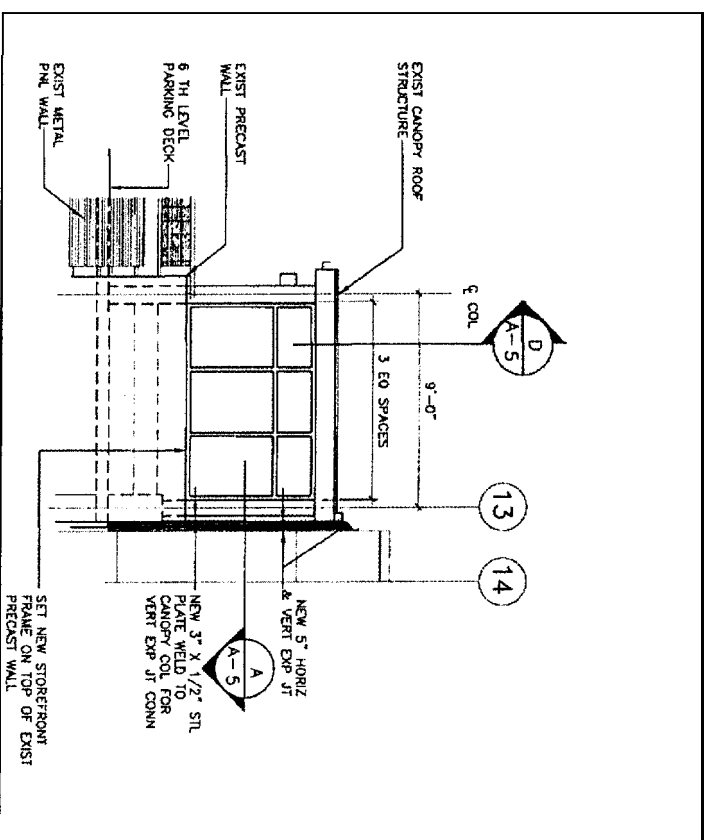
PART PLAN - CANOPY ROOF 5TH LEVEL
NTS



NEW CANOPY ENCLOSURE AND EXPANSION JT - NORTH ELEVATION
NTS



NTS



NEW CANOPY ENCLOSURE AND EXPANSION JT - SOUTH ELEVATION
NTS

Issued for Construction 8/28/2006
Confirmed Set includes Addenda 1 & 2 (8/28/2006)



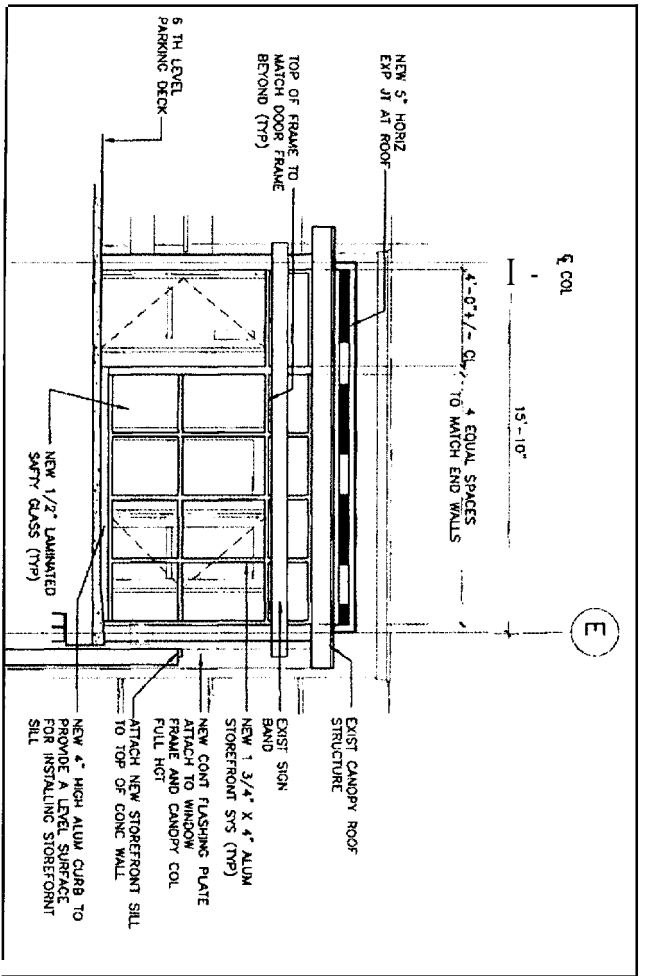
ALUMINUM ENTRANCE VESTIBULE
DETAILS LEVEL 5

ALUMINUM ENTRANCE VESTIBULES
NORTH PARKING GARAGE

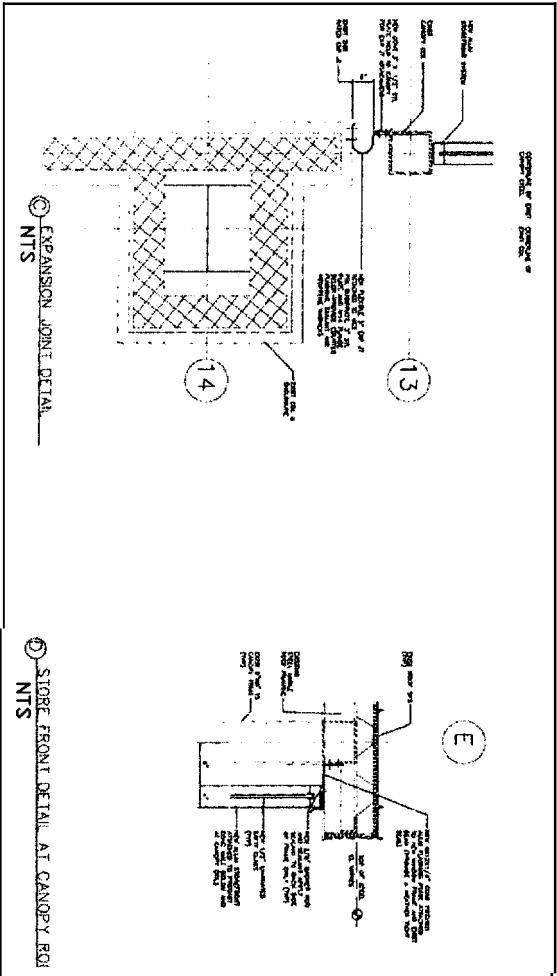
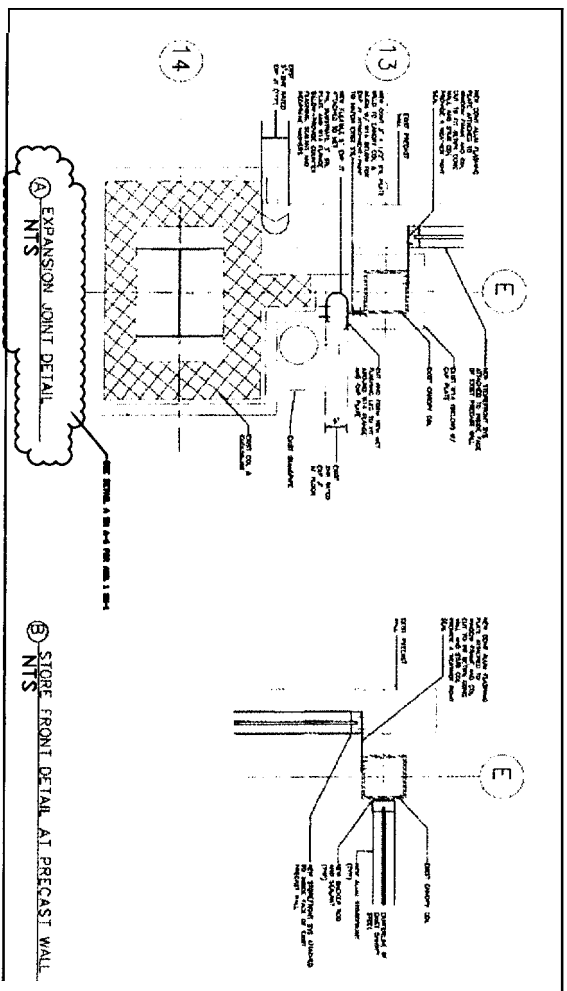
Portland International Jetport
1001 Westbrook St.
Portland, ME 04102

PROJECT BY: PHB/JWP
DRAWN BY: JWP
CHECKED BY: CL/A
DATE: 8/28/2006

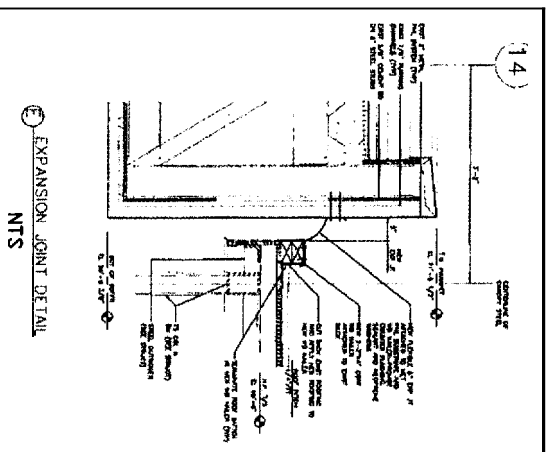
A-4
SHEET 4 OF 6



NEW CANOPY ENCLOSURE AND EXPANSION JT - NORTH ELEVATION
NTS



SLOPE FRONT DETAIL AT CANOPY ROOF
NTS



EXPANSION JOINT DETAIL
NTS

ALUMINUM ENTRANCE VESTIBULES
NORTH PARKING GARAGE

Portland International Jetport
1001 Westbrook St.
Portland, ME 04102

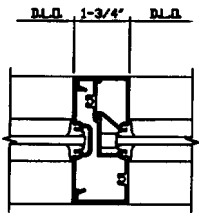
ALUMINUM ENTRANCE VESTIBULE
DETAILS LEVEL 5



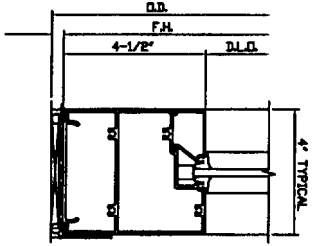
Issued for Construction 8/28/2006
Conformed Set Includes Addenda 1 & 2 (8/28/2006)

DESCRIPTION

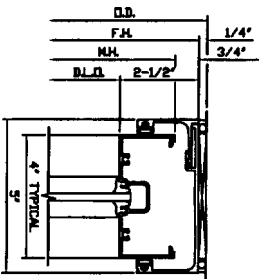
SCREW SPLINE SYSTEM



INTERMEDIATE HORIZONTAL



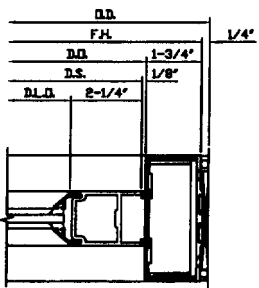
SIDELITE BASE



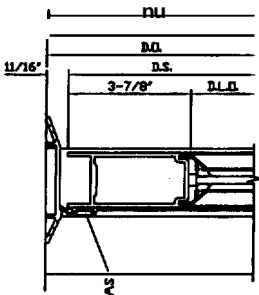
HEAD RECEIVER
(SEE NOTE 2)

**HEAD AND JAMB
COMPENSATING RECEPTOR**

**DOUBLE ACTING DOOR
WITH TRANSOM**



TOP RAIL

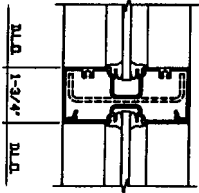


BOTTOM RAIL

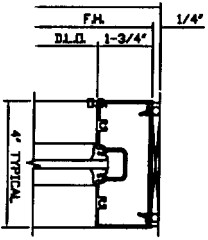
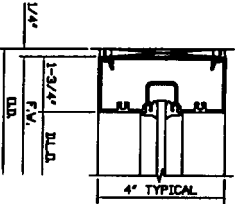
GENERAL NOTES

- 1) DETAILS OF ALUMINUM FRAMING SYSTEM ARE BASED ON THE SPECIFIED MANUFACTURER'S STANDARD PRODUCT DETAILS AND ARE NOT INTENDED TO RESTRICT MATERIALS TO A PARTICULAR MANUFACTURER PROVIDING ALL QUALITY AND PERFORMANCE LEVELS ARE MET OR EXCEEDED.
- 2) HEAD RECEPTOR WILL BE PROVIDED AND INSTALLED WHICH WILL ALLOW A MINIMUM OF +/- ONE-INCH OF DEFLECTION OF EXISTING STRUCTURAL MEMBERS.
- 3) SEE SPECIFICATIONS FOR FLASHING AND CAULKING REQUIREMENTS, AND TESTING OF COMPLETE INSTALLATION OF VESTIBULES.

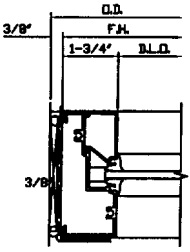
VERTICAL MULLION



JAMB

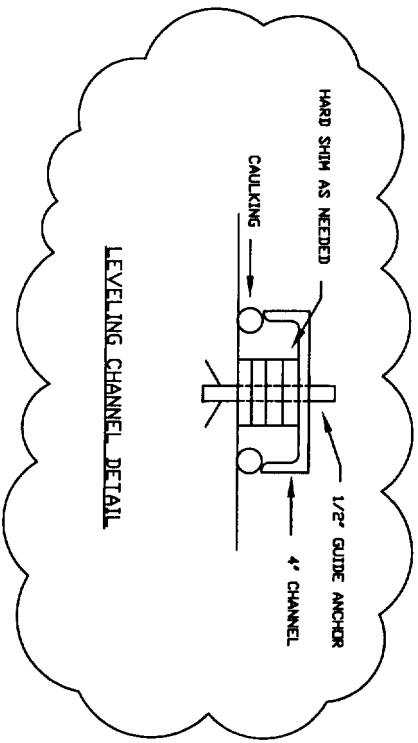


HEAD

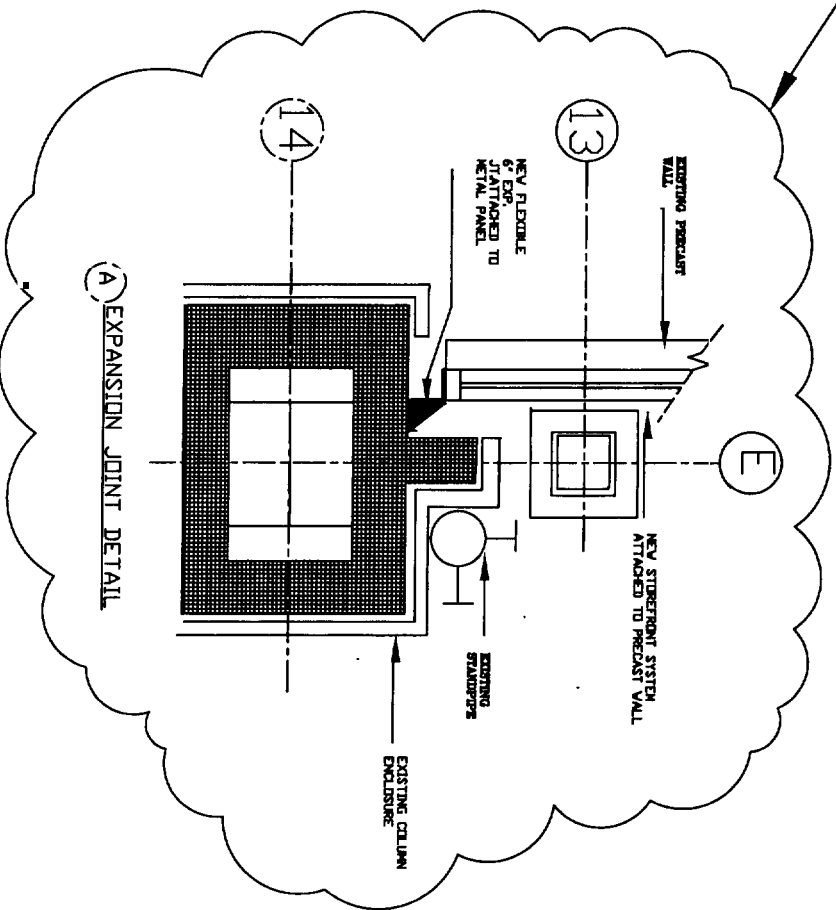


SILL

ADD. 1
SK-2



ADD. 1
SK-1



(A) EXPANSION JOINT DETAIL

ALUMINUM ENTRANCE VESTIBULES
NORTH PARKING GARAGE

Portland International Jetport
1001 Westbrook St.
Portland, ME 04102

ALUMINUM ENTRANCE VESTIBULE:
DETAILS



Issued for Construction 8/28/2006
Conformed Set includes Addenda 1 & 2 (8/28/2006)

DESCRIPTION

PROJECT NO.	DESIGNED BY: PHB/JWP
DRN. NO. 70	JWP
CHK. TO: CL	CLA
DATE: 8/28/2006	
SHEET NO.	
A	
OF 6	