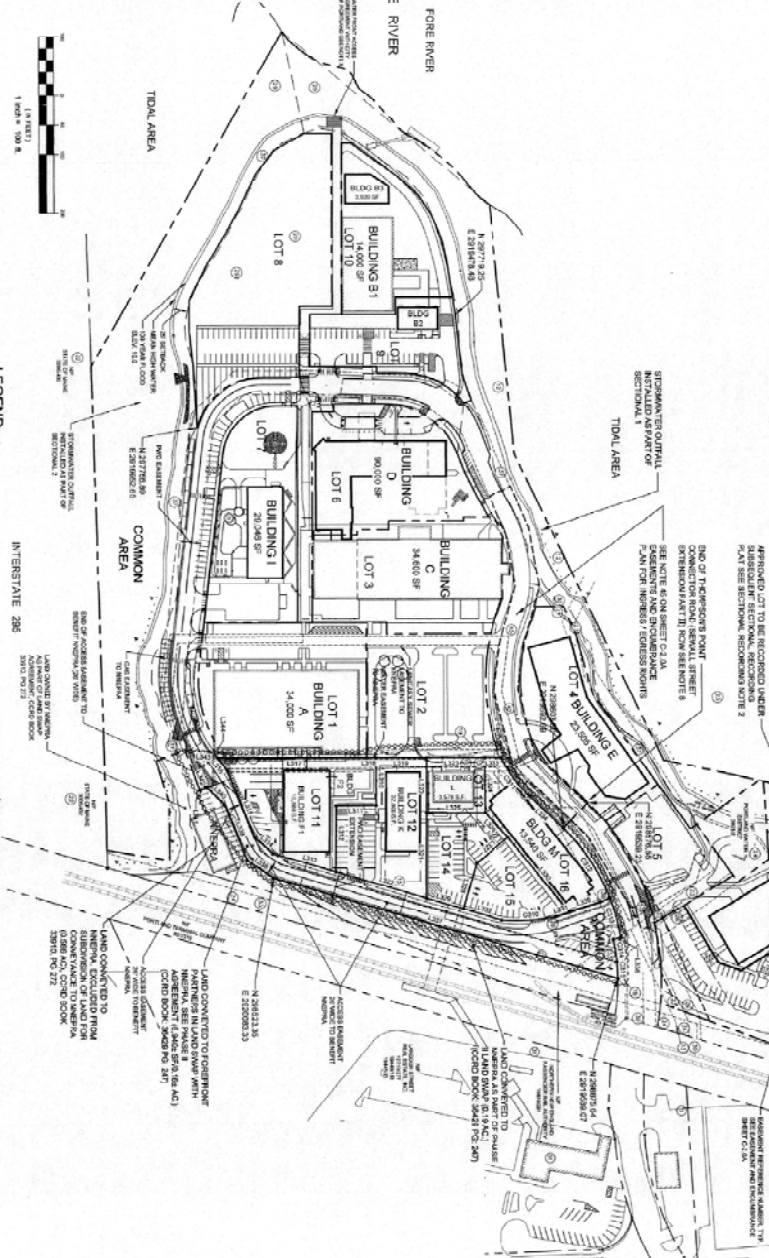
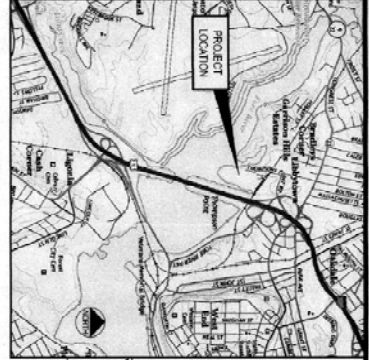


**PLAN NOTES:**

1. THE PLAN IS A PRELIMINARY PLAN AND IS SUBJECT TO THE CITY OF PORTLAND PLANNING BOARD AND THE CITY OF PORTLAND PLANNING AND COMMUNITY DEVELOPMENT DEPARTMENT'S REVIEW AND APPROVAL.
2. THE PLAN IS A PRELIMINARY PLAN AND IS SUBJECT TO THE CITY OF PORTLAND PLANNING BOARD AND THE CITY OF PORTLAND PLANNING AND COMMUNITY DEVELOPMENT DEPARTMENT'S REVIEW AND APPROVAL.
3. THE PLAN IS A PRELIMINARY PLAN AND IS SUBJECT TO THE CITY OF PORTLAND PLANNING BOARD AND THE CITY OF PORTLAND PLANNING AND COMMUNITY DEVELOPMENT DEPARTMENT'S REVIEW AND APPROVAL.
4. THE PLAN IS A PRELIMINARY PLAN AND IS SUBJECT TO THE CITY OF PORTLAND PLANNING BOARD AND THE CITY OF PORTLAND PLANNING AND COMMUNITY DEVELOPMENT DEPARTMENT'S REVIEW AND APPROVAL.
5. THE PLAN IS A PRELIMINARY PLAN AND IS SUBJECT TO THE CITY OF PORTLAND PLANNING BOARD AND THE CITY OF PORTLAND PLANNING AND COMMUNITY DEVELOPMENT DEPARTMENT'S REVIEW AND APPROVAL.
6. THE PLAN IS A PRELIMINARY PLAN AND IS SUBJECT TO THE CITY OF PORTLAND PLANNING BOARD AND THE CITY OF PORTLAND PLANNING AND COMMUNITY DEVELOPMENT DEPARTMENT'S REVIEW AND APPROVAL.
7. THE PLAN IS A PRELIMINARY PLAN AND IS SUBJECT TO THE CITY OF PORTLAND PLANNING BOARD AND THE CITY OF PORTLAND PLANNING AND COMMUNITY DEVELOPMENT DEPARTMENT'S REVIEW AND APPROVAL.
8. THE PLAN IS A PRELIMINARY PLAN AND IS SUBJECT TO THE CITY OF PORTLAND PLANNING BOARD AND THE CITY OF PORTLAND PLANNING AND COMMUNITY DEVELOPMENT DEPARTMENT'S REVIEW AND APPROVAL.
9. THE PLAN IS A PRELIMINARY PLAN AND IS SUBJECT TO THE CITY OF PORTLAND PLANNING BOARD AND THE CITY OF PORTLAND PLANNING AND COMMUNITY DEVELOPMENT DEPARTMENT'S REVIEW AND APPROVAL.
10. THE PLAN IS A PRELIMINARY PLAN AND IS SUBJECT TO THE CITY OF PORTLAND PLANNING BOARD AND THE CITY OF PORTLAND PLANNING AND COMMUNITY DEVELOPMENT DEPARTMENT'S REVIEW AND APPROVAL.

**SECTIONAL RECORDING NOTES:**

1. THE PLAN IS A PRELIMINARY PLAN AND IS SUBJECT TO THE CITY OF PORTLAND PLANNING BOARD AND THE CITY OF PORTLAND PLANNING AND COMMUNITY DEVELOPMENT DEPARTMENT'S REVIEW AND APPROVAL.
2. THE PLAN IS A PRELIMINARY PLAN AND IS SUBJECT TO THE CITY OF PORTLAND PLANNING BOARD AND THE CITY OF PORTLAND PLANNING AND COMMUNITY DEVELOPMENT DEPARTMENT'S REVIEW AND APPROVAL.
3. THE PLAN IS A PRELIMINARY PLAN AND IS SUBJECT TO THE CITY OF PORTLAND PLANNING BOARD AND THE CITY OF PORTLAND PLANNING AND COMMUNITY DEVELOPMENT DEPARTMENT'S REVIEW AND APPROVAL.



**LEGEND**

- PROPOSED SECTIONAL RECORDING
- EXISTING SECTIONAL RECORDING
- EXISTING EASEMENTS
- EXISTING UTILITIES
- EXISTING STREETS
- EXISTING ALLEYS
- EXISTING COMMON AREAS
- EXISTING TIDAL AREAS
- EXISTING FORE RIVER
- EXISTING INTERSTATE 205

**SURVEYOR'S STATEMENT**

I, the undersigned, being a duly licensed and sworn Surveyor of the State of Oregon, do hereby certify that the foregoing is a true and correct copy of the original plan as recorded in my office, and that the same is a true and correct copy of the original plan as recorded in my office, and that the same is a true and correct copy of the original plan as recorded in my office.



**REGISTRY BLOCK**  
 STATE OF OREGON  
 CLATSOP COUNTY REGISTRY OF DEEDS  
 RECEIVED 1/12/2016 10:30 AM AND RECORDED IN  
 PLAN BOOK 2-20 PAGE 281  
 ATTEST: [Signature]

**SPECIAL CONDITIONS OF PLANNING BOARD APPROVAL DATED JAN. 12, 2016**

1. The applicant shall provide a copy of this plan to the City of Portland Planning and Community Development Department for review and approval. The applicant shall provide a copy of this plan to the City of Portland Planning and Community Development Department for review and approval. The applicant shall provide a copy of this plan to the City of Portland Planning and Community Development Department for review and approval.

LOT NUMBER	AREA (SQ FT)	AREA (AC)
LOT 1	14,000	0.32
LOT 2	14,000	0.32
LOT 3	14,000	0.32
LOT 4	14,000	0.32
LOT 5	14,000	0.32
LOT 6	14,000	0.32
LOT 7	14,000	0.32
LOT 8	14,000	0.32
LOT 9	14,000	0.32
LOT 10	14,000	0.32
LOT 11	14,000	0.32
LOT 12	14,000	0.32
LOT 13	14,000	0.32
LOT 14	14,000	0.32
LOT 15	14,000	0.32
LOT 16	14,000	0.32
LOT 17	14,000	0.32
LOT 18	14,000	0.32
<b>TOTAL</b>	<b>252,000</b>	<b>5.76</b>

SECTIONAL RECORDING	SECTION	AREA (SQ FT)	AREA (AC)
SECTIONAL RECORDING 1	1	14,000	0.32
SECTIONAL RECORDING 2	2	14,000	0.32
SECTIONAL RECORDING 3	3	14,000	0.32
<b>TOTAL</b>	<b>3</b>	<b>42,000</b>	<b>0.96</b>

**PROJECT: THE FOREFRONT PARTNERS I, LP**  
**AT THOMPSONS POINT**  
**AMENDED SUBDIVISION PLAN**  
**SECTIONAL 3 RECORDING PLAN**  
**FOREFRONT PARTNERS I, LP**  
 501 DAWSON ST PORTLAND, OREGON 97204  
**PLACEMAKER PARTNERS, LLC**  
 501 DAWSON ST  
 PORTLAND, OREGON 97204  
 DATE: MAY 21, 2016  
 CHECKED BY: [Signature]  
 DATE: [Date]