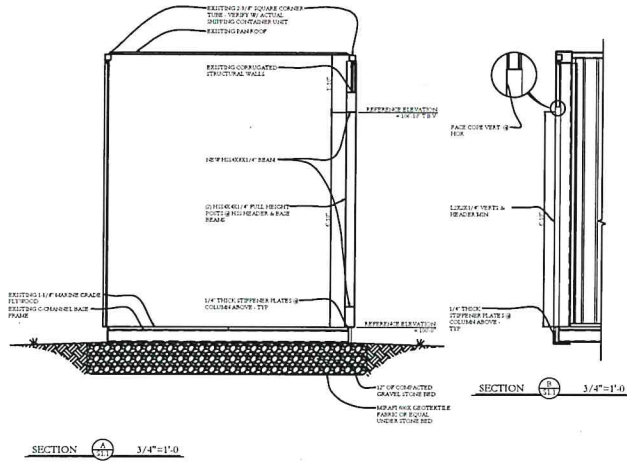


GENERAL STEEL NOTES

1. ALL DIMENSIONS AND CONNECTIONS SHALL BE VERIFIED PRIOR TO FABRICATION
2. ALL STEEL SHALL BE HOT-DIP GALVANNEED STEEL, CONFORMING TO THE MOST CURRENT AISC SPECIFICATIONS
3. W SHAPES ASTM A992, Fy = 50 KSI
4. SQUARE AND RECTANGULAR TUBES, ASTM A500, Gr. B, Fy = 45 KSI
5. CHANNELS ASTM A6, Gr. B, Fy = 45 KSI
6. CHANNELS AND C-CHANNELS, ASTM A108, Fy = 45 KSI
7. STEEL TUBES ASTM A513, Fy = 45 KSI
8. ALL WELDS BY QUALIFIED WELDER, BRISX ELECTRODE

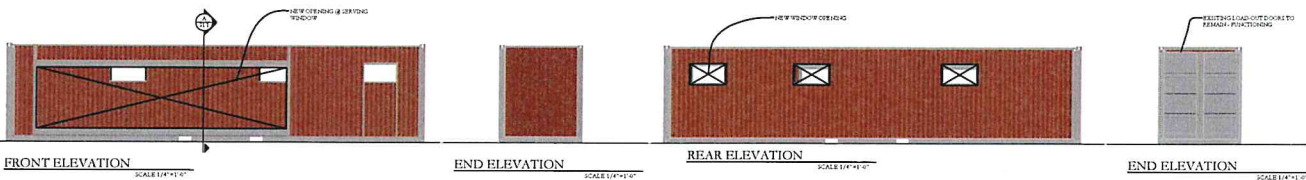


MODIFIED SHIPPING CONTAINER PLAN
 NOTES:
 1. SHIPPING CONTAINERS ARE TO BE STRUCTURALLY SOUND WITHOUT MAJOR DENTS OR SUBSTANTIAL RUST TO FRAMES OR STRUCTURAL METAL MEMBERS.
 SCALE 1/4"=1'-0"



SECTION 1-1 3/4"=1'-0"

SECTION 2-2 3/4"=1'-0"



FRONT ELEVATION SCALE 1/4"=1'-0"

END ELEVATION SCALE 1/4"=1'-0"

REAR ELEVATION SCALE 1/4"=1'-0"

END ELEVATION SCALE 1/4"=1'-0"

Structural Integrity
 2017-2018
 2019-2020
 2021-2022
 2023-2024
 2025-2026
 2027-2028
 2029-2030
 2031-2032
 2033-2034
 2035-2036
 2037-2038
 2039-2040
 2041-2042
 2043-2044
 2045-2046
 2047-2048
 2049-2050
 2051-2052
 2053-2054
 2055-2056
 2057-2058
 2059-2060
 2061-2062
 2063-2064
 2065-2066
 2067-2068
 2069-2070
 2071-2072
 2073-2074
 2075-2076
 2077-2078
 2079-2080
 2081-2082
 2083-2084
 2085-2086
 2087-2088
 2089-2090
 2091-2092
 2093-2094
 2095-2096
 2097-2098
 2099-2100

THOMPSON POINT CONCESSIONS
 Thompson Point
 Portland, Maine

Document Title:
 Structural Steel
 Modifications

Sheet Title:

Scale: AS NOTED

Date: 09/07/2017

Revisions:

Sheet
 S1.1