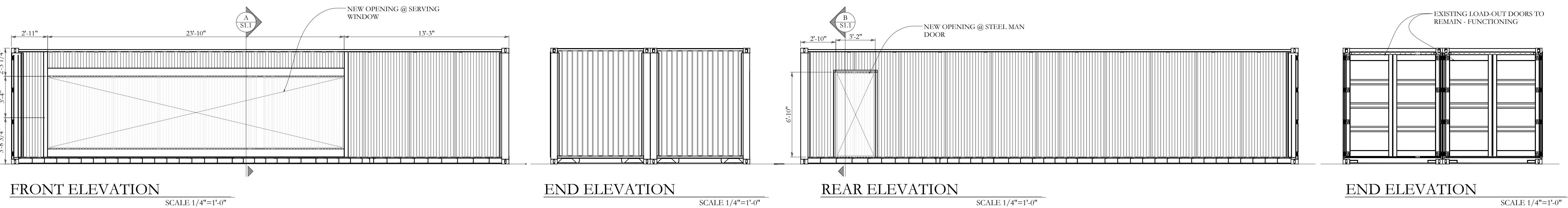
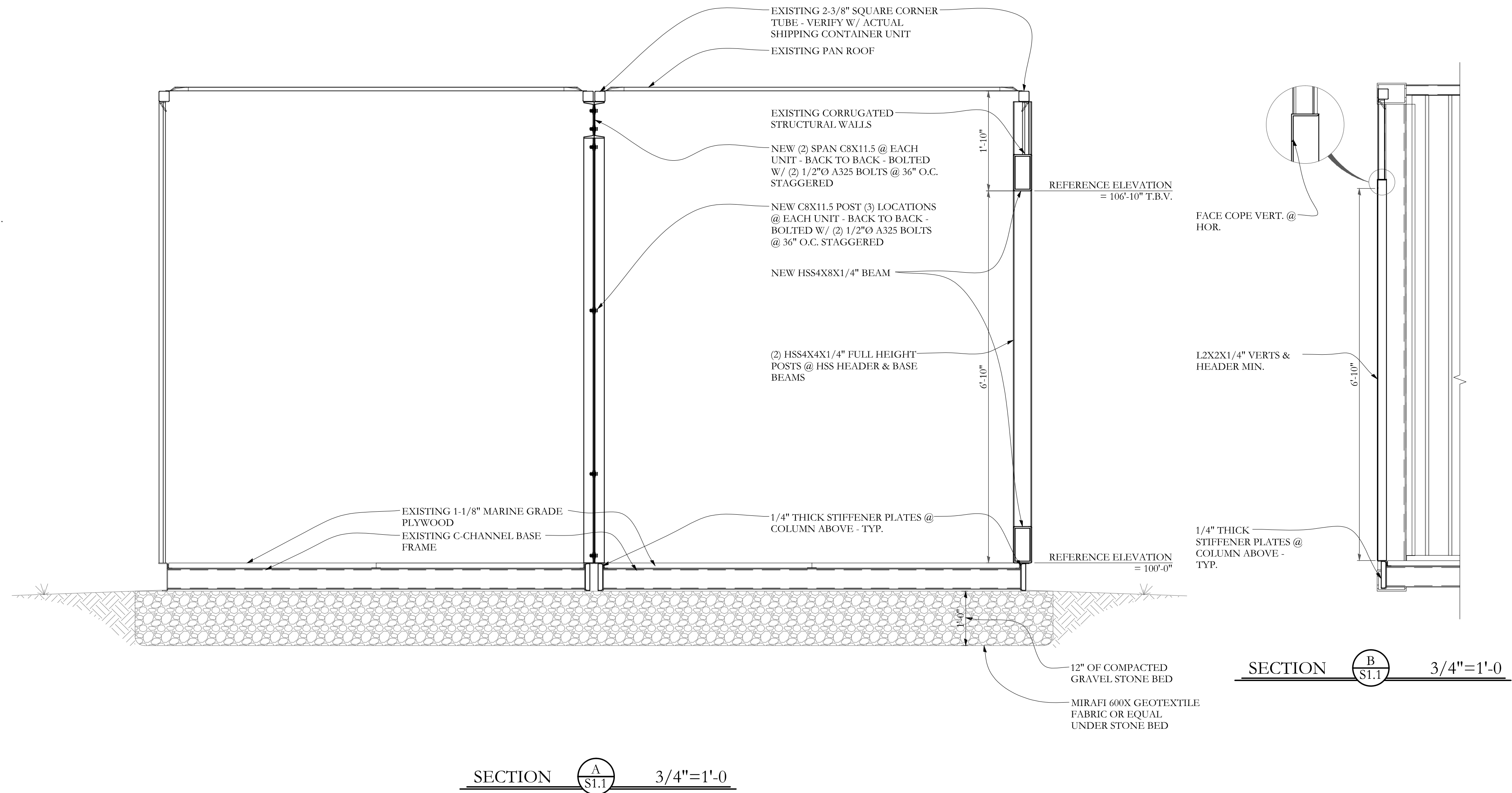
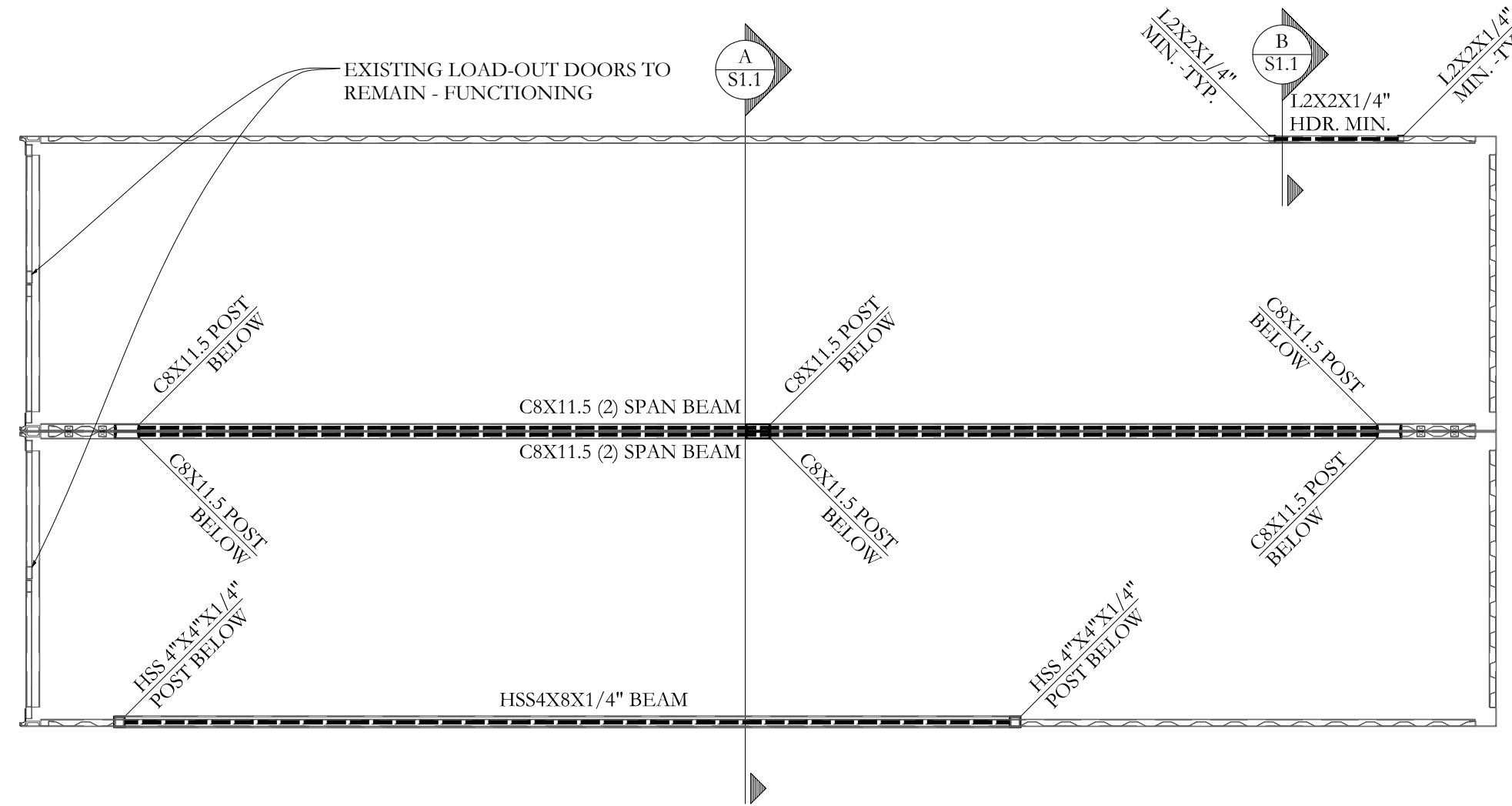


# GENERAL STEEL NOTES

SI Job # 15-0078  
 "POINT"  
 Thompson Point, Maine

- ALL DIMENSIONS AND CONDITIONS SHALL BE VERIFIED PRIOR TO FABRICATION.
- ALL STEEL SHALL BE NEW AND UN-SPLICED STEEL CONFORMING TO THE MOST CURRENT ASTM DESIGNATIONS INDICATED:
  - W-SHAPES: ASTM 1992 (Fy = 50 KSI)
  - SQUARE AND RECTANGULAR HSS: ASTM A500, Gr. B (Fy = 46 KSI)
  - ROUND HSS: ASTM A500, GR. B (Fy = 42 KSI)
  - CHANNELS, ANGLES, PLATES, BARS AND RODS: ASTM A36 (Fy = 36 KSI)
  - PIPES: ASTM A53, Gr. B (Fy = 35 KSI)
- ALL WELDING BY QUALIFIED WELDERS. E70XX ELECTRODES.



**Structural Integrity**  
 Consulting Engineers, Inc.  
 77 Oak Street  
 Portland, ME, 04101  
 p. 207-774-4634  
 f. 866-793-7835  
 www.structuralintegrity.com  
 BUILD WITH CONFIDENCE  
 SI Job # 15-0078

STATE OF MAINE  
 AARON C. JONES  
 No. 10968  
 LICENSED PROFESSIONAL ENGINEER  
 June 30th, 2016

**THOMPSON POINT CONCRESSIONS**  
 Thompson Point  
 Portland, Maine

Document Title  
 Structural Steel Modifications

Sheet Title

Scale: AS NOTED

Date: 06/30/2015

Revisions

Sheet

S1.1