

Prepared For:

Consultant:

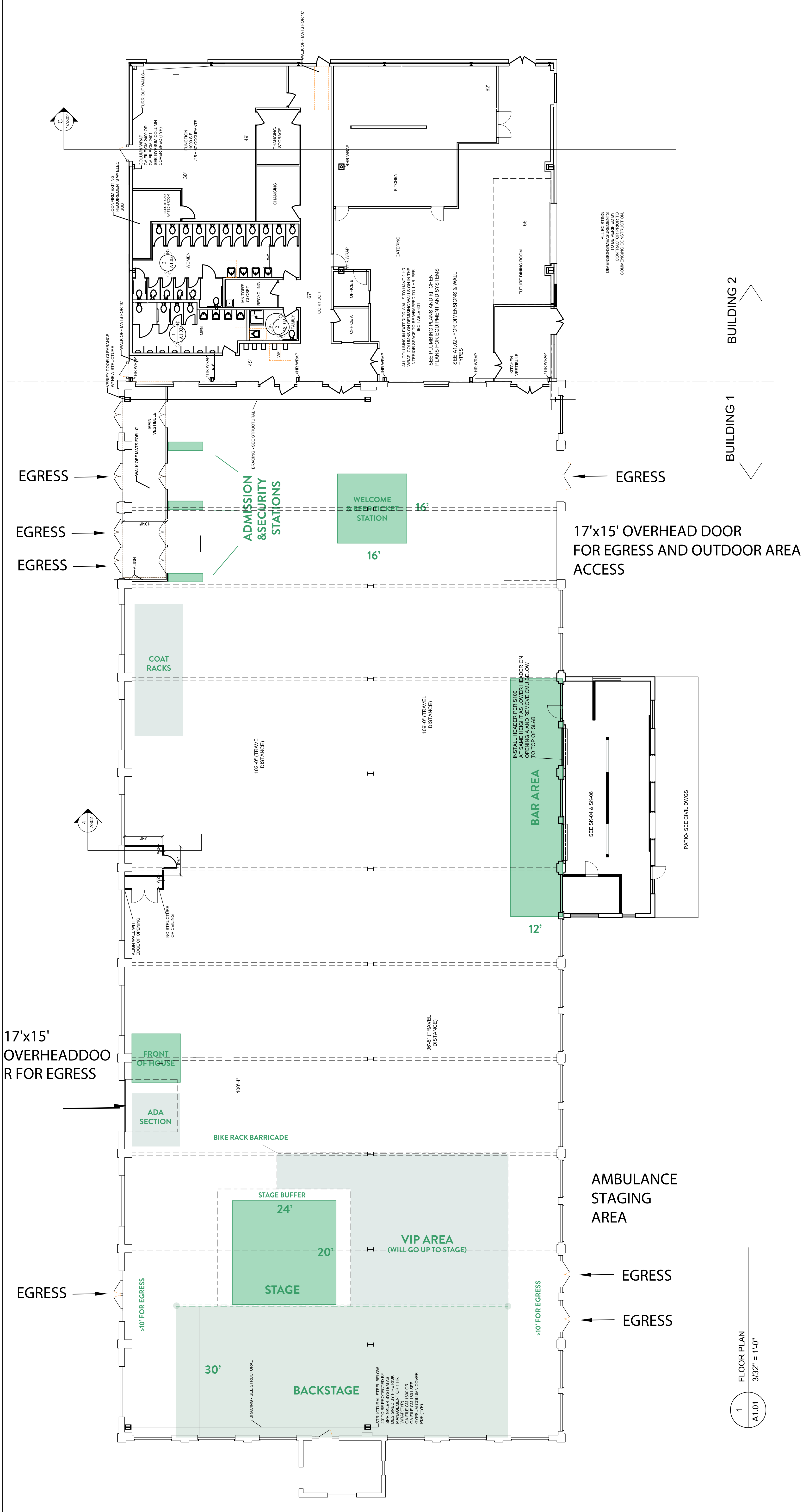
ARCHETYPE  
48 Union Wharf Portland, Maine 04101  
(207) 772-6022 Fax (207) 772-4056

THOMPSON'S POINT-  
BRICK SOUTH  
PHASE 1  
THOMPSON'S POINT,  
PORTLAND ME.

Project:  
Architect:  
Revisions:  
2016-12-22 CONSTRUCTION SET

FLOOR PLANS  
Date: 11-17-2016  
Scale:

A1.01



**IBC 2009**  
3A CONSTRUCTION, 25,229 S.F.  
NEW ASSEMBLY OCCUPANCY - A2 OR A3  
OCCUPANCY - 2,500 - FOR BOTH BUILDINGS COMBINED (POSTED AND WRITTEN DOCUMENTATION)  
ACTUAL OCCUPANCY - ASSEMBLY - CONCENTRATED, 25,229 / 7 = 3,604 OCCUPANTS.  
UNCONCENTRATED - 25,229 / 7 = 1,882 OCCUPANTS.

**IBC 405**  
LEVEL 3 ALTERATION  
FINISHES - EXITS (B) ENCLOSED SPACES (C)  
SPRINKLER REQUIRED  
NO FIRE EXTINGUISHER REQUIRED  
TRAVEL DISTANCE TO EXITS <250'  
DEAD END CORRIDORS <20'  
ALL EXITS WILL HAVE ACCESSIBLE EXITING  
EXIT SIGNS REQUIRED (MIN. 4' x 6')  
EXIT ACCESS TRAVEL DISTANCE <250'

**IBC 1008.2**  
TRAVEL DISTANCE <250' (SPRINKLED)  
AT LEAST 1 ACCESSIBLE ENTRANCE  
SYSTEM INITIATED ALARM REQUIRED W/ VOICE/ALARM

**IBC 907.2.1.1**

**NFPA**  
CONSTRUCTION TYPE 3A  
7,384 S.F.  
NEW ASSEMBLY OCCUPANCY  
EAST ANNEX OCCUPANCY PER SPACE, SEE PLAN  
SPRINKLED PER 11.05 TRAVEL - 25' OCCUPANT LOAD=50  
TRAVEL DISTANCE TO EXITS <250'  
DEAD END CORRIDORS <20'  
EMERGENCY LIGHTING REQUIRED  
COOKING EQUIPMENT PROTECTED  
FIRE ALARM REQUIRED

**IBC 2009**  
3A CONSTRUCTION, 7,384 S.F.  
ALLOWABLE - 9,500 (4) = 38,000 S.F.  
NEW ASSEMBLY OCCUPANCY - A2 OR A3  
OCCUPANCY - 2,500 - FOR BOTH BUILDINGS COMBINED (POSTED AND WRITTEN DOCUMENTATION)  
INDIVIDUAL OCCUPANCIES OF ROOMS IN EAST ANNEX NOTED ON PLAN

**IBC 405**  
LEVEL 3 ALTERATION  
FINISHES - EXITS (B) ENCLOSED SPACES (C)  
SPRINKLER REQUIRED  
NO FIRE EXTINGUISHER REQUIRED  
MEANS OF EGRESS ILLUMINATION REQUIRED  
ALL EXITS WILL HAVE ACCESSIBLE EXITING  
EXIT SIGNS REQUIRED (MIN. 4' x 6')  
EXIT ACCESS TRAVEL DISTANCE <250'

**IBC 1008.2**  
TRAVEL DISTANCE <250' (SPRINKLED)  
AT LEAST 1 ACCESSIBLE ENTRANCE  
SYSTEM INITIATED ALARM REQUIRED W/ VOICE/ALARM

**IBC 907.2.1.1**

**NFPA**  
CONSTRUCTION TYPE 3A  
7,384 S.F.  
NEW ASSEMBLY OCCUPANCY  
EAST ANNEX OCCUPANCY PER SPACE, SEE PLAN  
SPRINKLED PER 11.05 TRAVEL - 25' OCCUPANT LOAD=50  
TRAVEL DISTANCE TO EXITS <250'  
DEAD END CORRIDORS <20'  
EMERGENCY LIGHTING REQUIRED  
COOKING EQUIPMENT PROTECTED  
FIRE ALARM REQUIRED

**IBC 2009**  
3A CONSTRUCTION, 7,384 S.F.  
ALLOWABLE - 9,500 (4) = 38,000 S.F.  
NEW ASSEMBLY OCCUPANCY - A2 OR A3  
OCCUPANCY - 2,500 - FOR BOTH BUILDINGS COMBINED (POSTED AND WRITTEN DOCUMENTATION)  
INDIVIDUAL OCCUPANCIES OF ROOMS IN EAST ANNEX NOTED ON PLAN

**IBC 405**  
LEVEL 3 ALTERATION  
FINISHES - EXITS (B) ENCLOSED SPACES (C)  
SPRINKLER REQUIRED  
NO FIRE EXTINGUISHER REQUIRED  
MEANS OF EGRESS ILLUMINATION REQUIRED  
ALL EXITS WILL HAVE ACCESSIBLE EXITING  
EXIT SIGNS REQUIRED (MIN. 4' x 6')  
EXIT ACCESS TRAVEL DISTANCE <250'

**IBC 1008.2**  
TRAVEL DISTANCE <250' (SPRINKLED)  
AT LEAST 1 ACCESSIBLE ENTRANCE  
SYSTEM INITIATED ALARM REQUIRED W/ VOICE/ALARM

**IBC 907.2.1.1**

**PLUMBING CALCULATIONS BASED ON AN ASSEMBLY ASSEMBLY BUILDING & EAST ANNEX COMBINED**  
UPC  
• MALES - 4 W.C. & 7 URINALS  
• FEMALES - 18 W.C. (FAMILY TOILET TO COUNT)  
• 6 DRINKING FOUNTAINS  
• 1 SERVICE SINK

**FIXTURE COUNT FOR BOTH BUILDINGS**

**1 FLOOR PLAN 3/32" = 1'-0"**