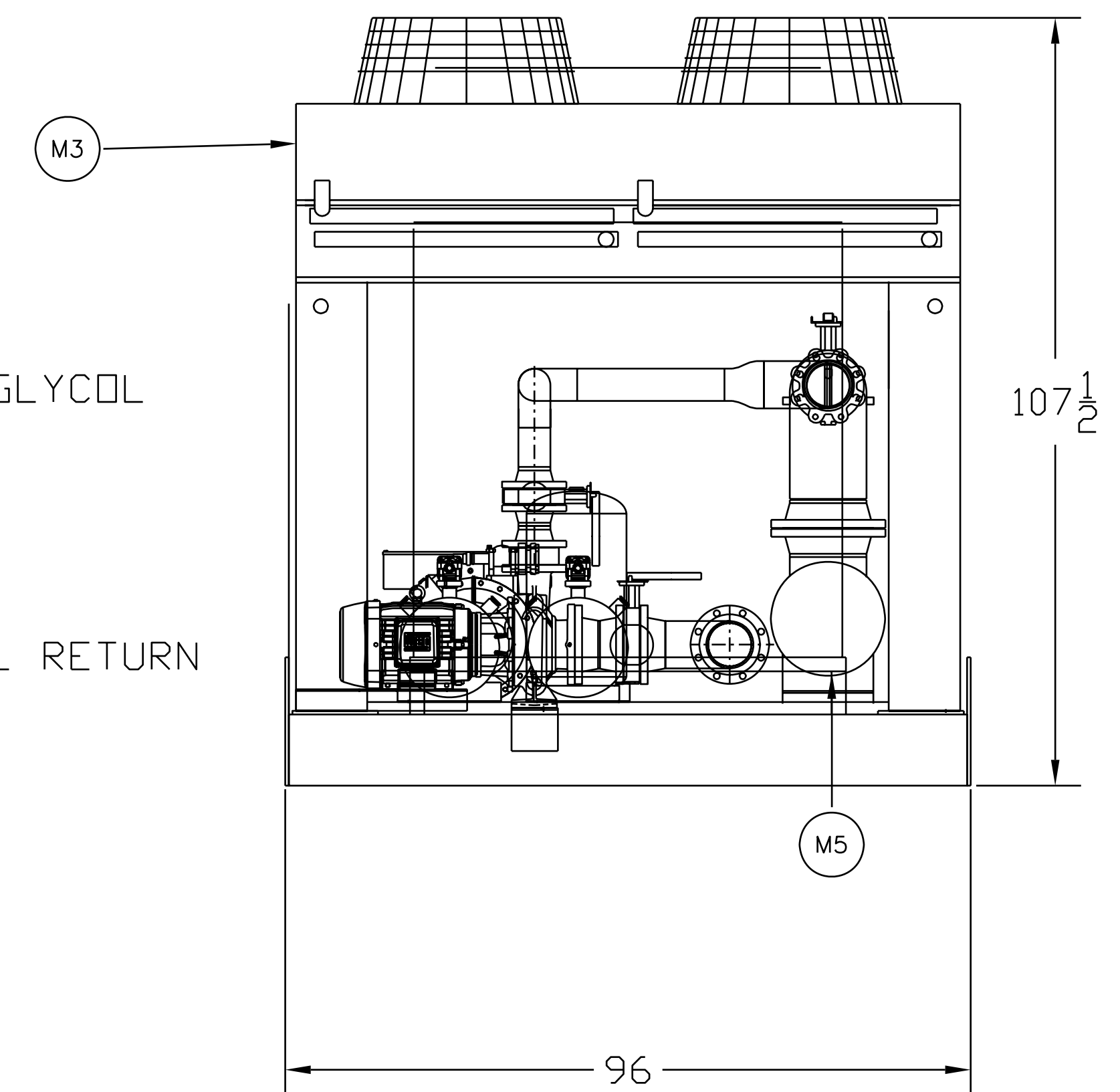
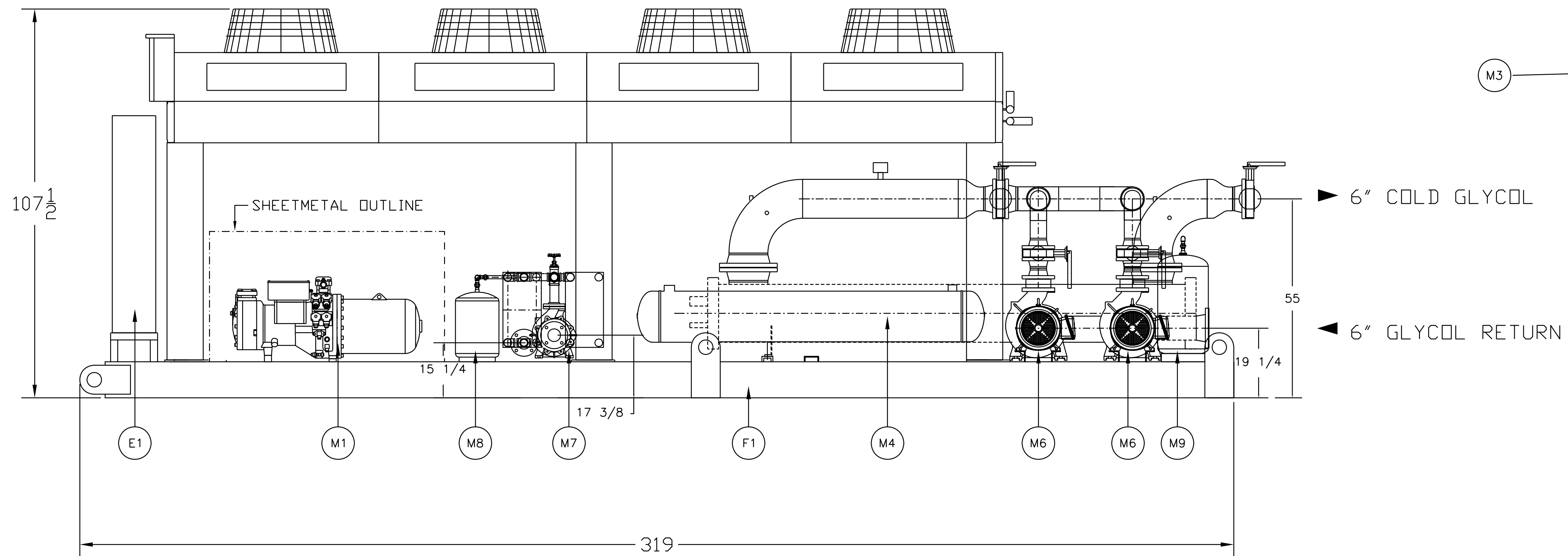


REF	PART NO	DESCRIPTION	QTY
E1	WO2189AE	PANEL	1
F1	WO2189AF	FRAME	1
M1	SCH2-9000-FWD-200	COMPRESSOR	2
M3	CVR 149	CONDENSER	1
M4	RF1484	RECEIVER	2
M5	QTXC1611	EVAPORATOR	1
M6	WE95-103SF 15HPMOTOR	8.625" DIA IMPELLER PUMP, COLD GLYCOL	2
M7	WE102-800SF 3HPMOTOR	7" DIA IMPELLER PUMP, WARM GLYCOL	1
M8	AX-15V	EXPANSION TANK	1
M9	AX-40V	EXPANSION TANK	1

NOTES:

- 1: ESTIMATED SHIPPING WEIGHT :- 18,000 LBS
ESTIMATED FLOODED WEIGHT :- 20,000 LBS
- 3: ALL DIMENSIONS ARE ± 1/2" (EXCEPT FOR PIPE CONNECTION LOCATIONS WHICH ARE APPROXIMATE ONLY.)
- 4: NET COOLING CAPACITY IS 93.5 TR GROSS
@ 18°F 40% ETHYLENE GLYCOL FROM PROCESS
AND 15°F TO PROCESS @ 87°F AMBIENT AIR
(108 °F CONDENSING TEMPERATURE)
- 5: MAX. REFRIGERANT CHARGE IS 497LBS PER CIRCUIT.
R22
- 6: MAX. OIL CHARGE IS 507 OZ PER COMPRESSOR.
- 7: POWER REQUIREMENTS ARE 356 FLA, 370 MCA @ 460V/3/60



TYPICAL CHILLER DESIGN



REVISIONS
MM/DD/YY
/ /

005