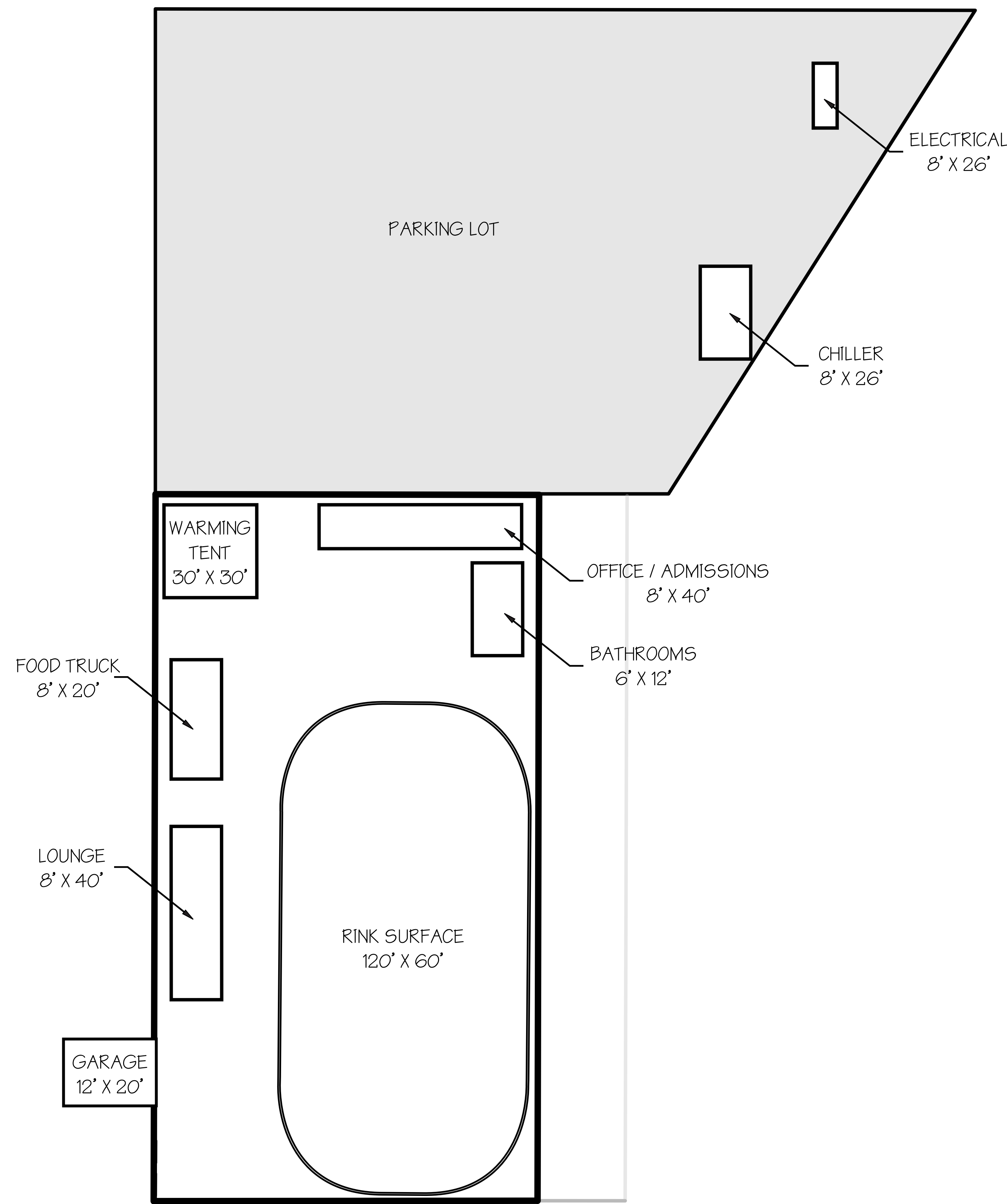
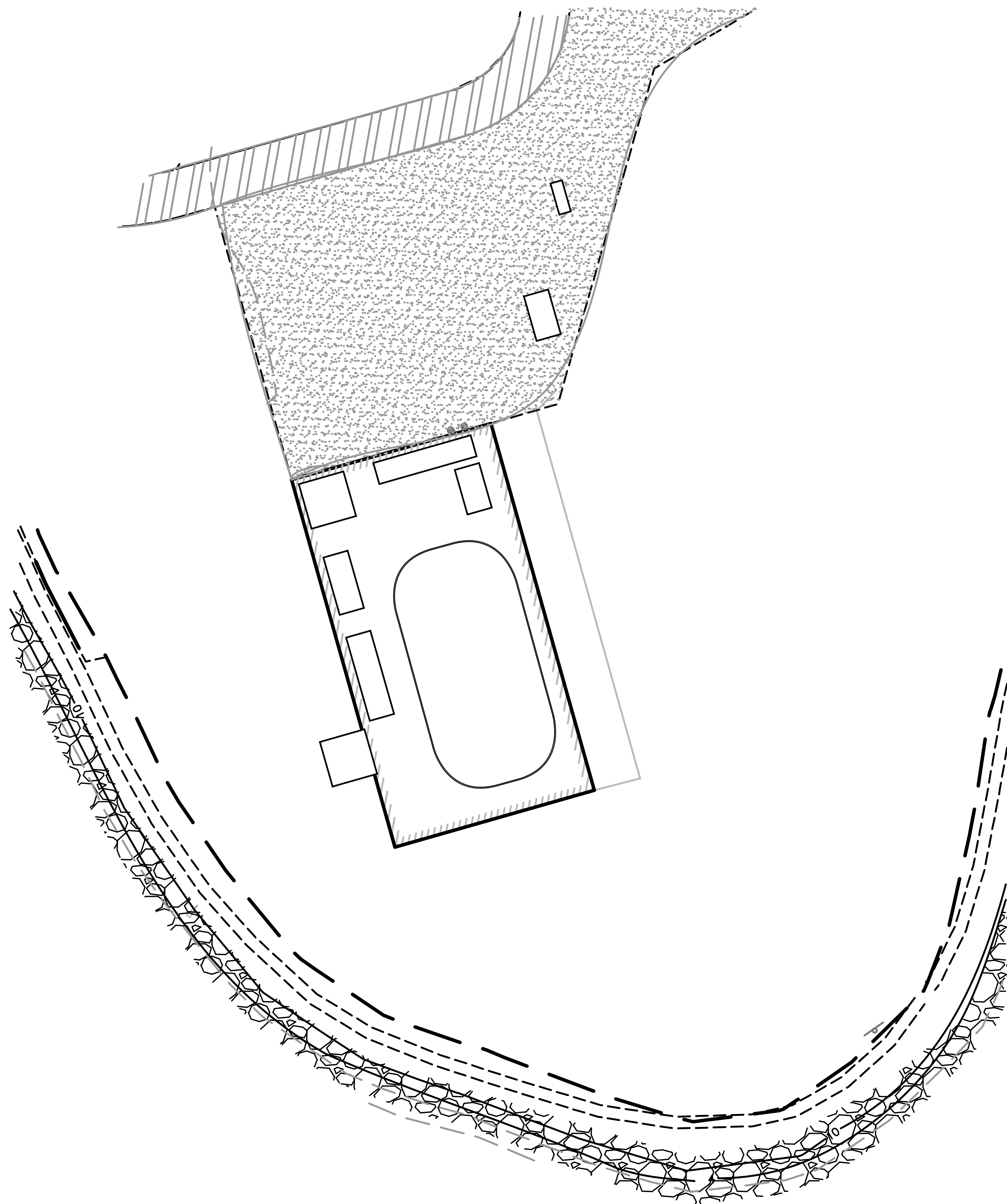


PLAN REFERENCES:

1. BOUNDARY AND TOPOGRAPHIC DATA PROVIDED BY SEBAGO TECHNIS AS SHOWN ON A PLAN TITLED 'ALTAIR/CSH LAND TITLE SURVEY OF 'THOMPSON'S POINT', DATED MAY 27, 2011 AND LAST REVISED ON NOVEMBER 23, 2011. ADDITIONAL SURVEY ON SUBURBAN PROPANE PROVIDED ON _____, 20____ BY SEBAGO TECHNIS.
2. BORINGS AND TEST PIT LOCATIONS PROVIDED BY CREDERE ASSOCIATES, LLC AS SHOWN ON A PLAN TITLED 'FIGURE 2 PROPOSED SAMPLE LOCATION PLAN, THOMPSON'S POINT PROPERTY'.
3. ADDITIONAL UTILITY DATA TAKEN FROM CITY AND UTILITY COMPANY RECORD DRAWINGS, AS WELL AS OBSERVATIONS BY DELUCA-HOFFMAN ASSOCIATES, INC. PERSONNEL DURING SITE VISITS.
4. TOPOGRAPHY AROUND 'DEPOT' BUILDING HAS BEEN UPDATED TO REFLECT WORK COMPLETED BY SHAW BROS. IN JULY 2014.

| | | |
|--|--|--|
| GRAPHIC SCALE (IN FEET) 1 inch = 80 ft. | | PROJECT: THE FOREFRONT AT THOMPSON'S POINT SHEET TITLE: ICE RINK ACCESS PLAN CLIENT: FOREFRONT PARTNERS I, LP DRAWN: DES (DATE: SEPT 2015) CHECKED: SRS (DATE: 11-4-2015) FILE NAME: 2582.05-01X SHEET: FIGURE 1 |
| 09/08/15 SUBMISSION TO CITY LICENSING DEPARTMENT DATE DESCRIPTION: | THE ICE RINK ACCESS PLAN LIC #11594 | FST ENGINEERS • PLANNERS • SCIENTISTS 778 MAIN ST., SUITE 6, SOUTH PORTLAND, ME 04106 |



RINK LAYOUT & MISC. STRUCTURES



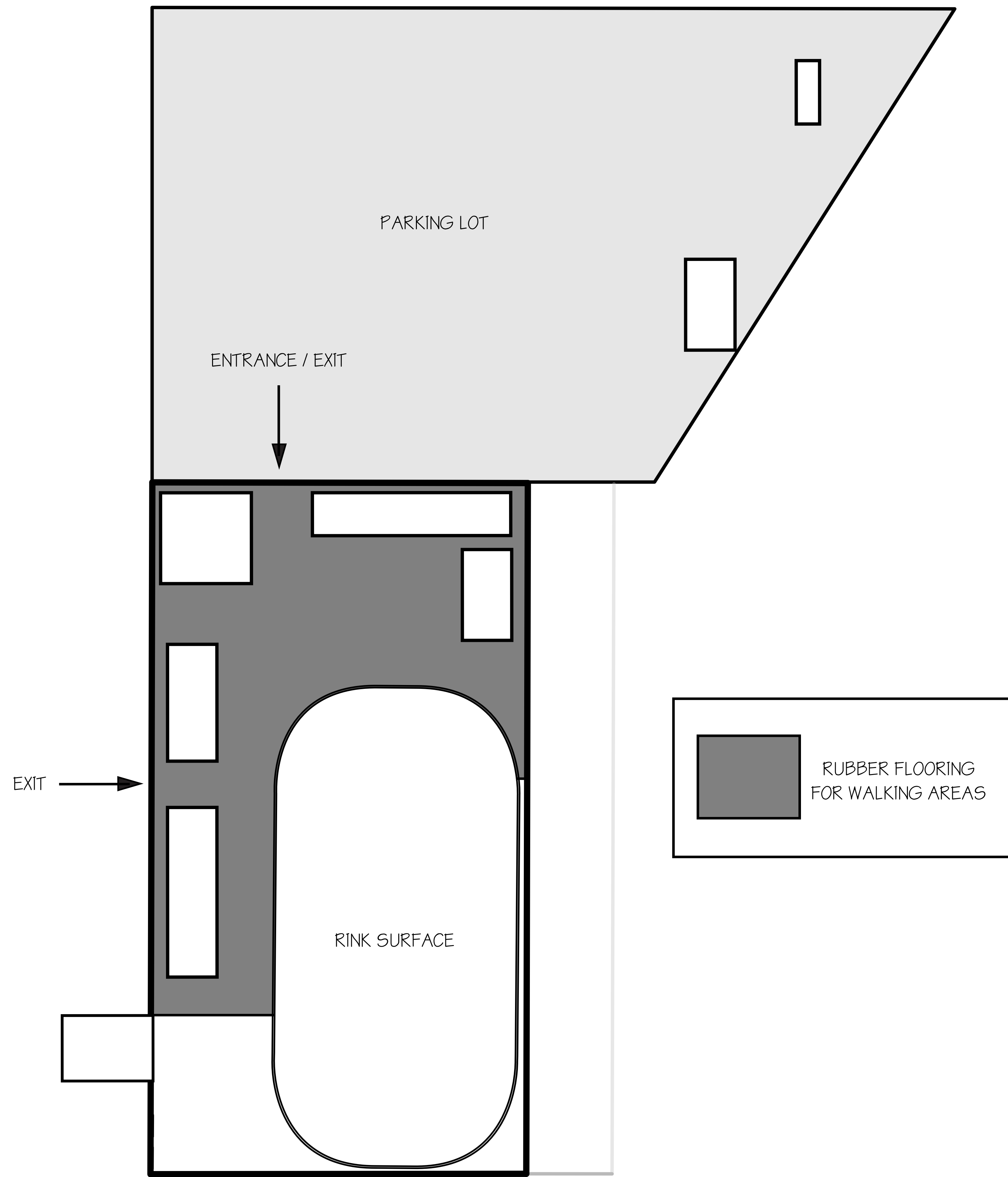
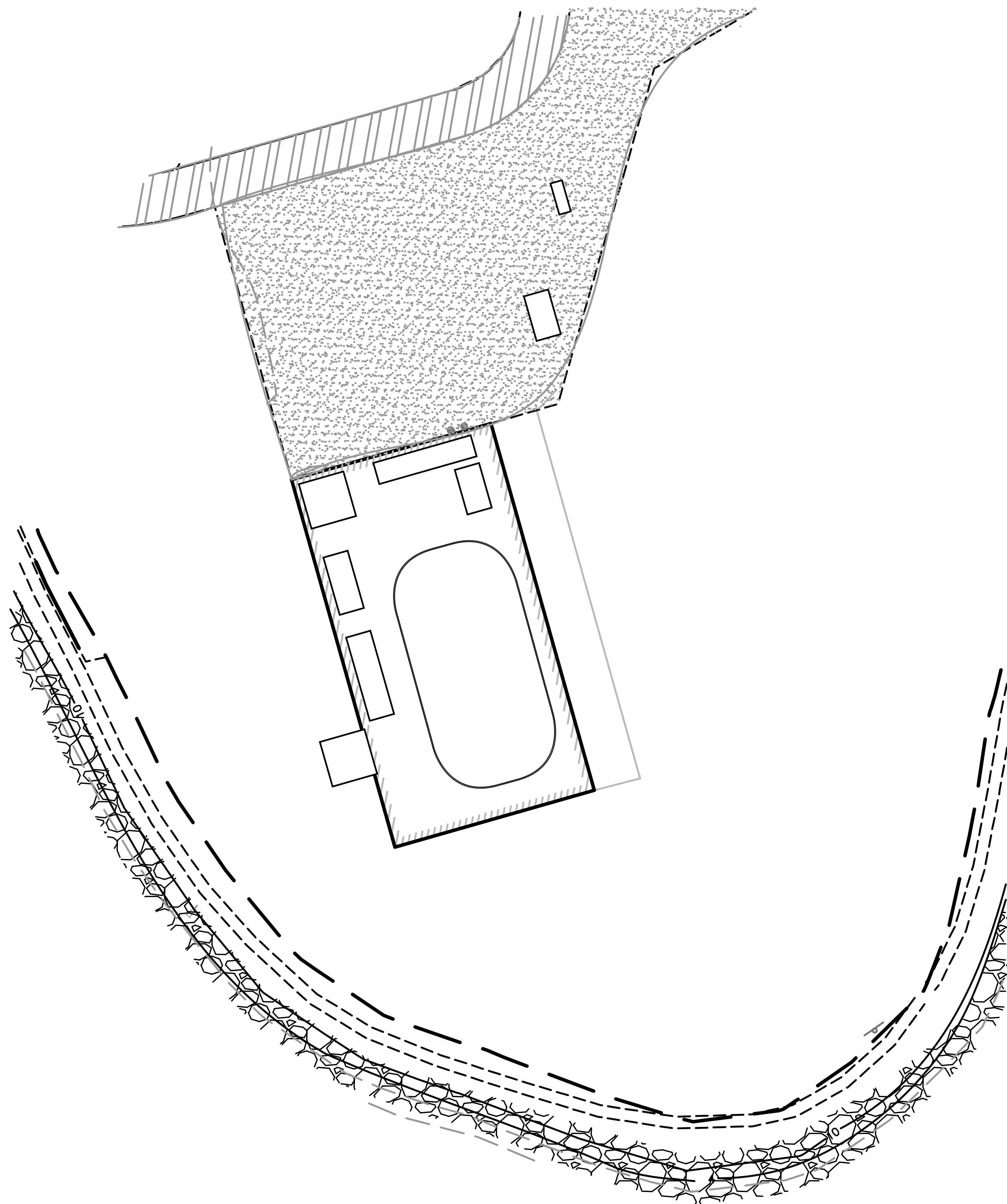
THOMPSON'S POINT


MM/DD/YY

/ /

REVISIONS

001



 RUBBER FLOORING FOR WALKING AREAS

WALKING AREAS & EXITS / ENTRANCES


 THOMPSON'S POINT

REVISIONS
 MM/DD/YY
 / /

002

Exhibit - B1 Power Distribution

The Ice Rink at Thompsons Point

Location A – Power Supply

Description:

Existing electrical supply distribution equipment. Power source for Ice Chiller.

Specs:

Service: 800 amps three-phase

Distribution:

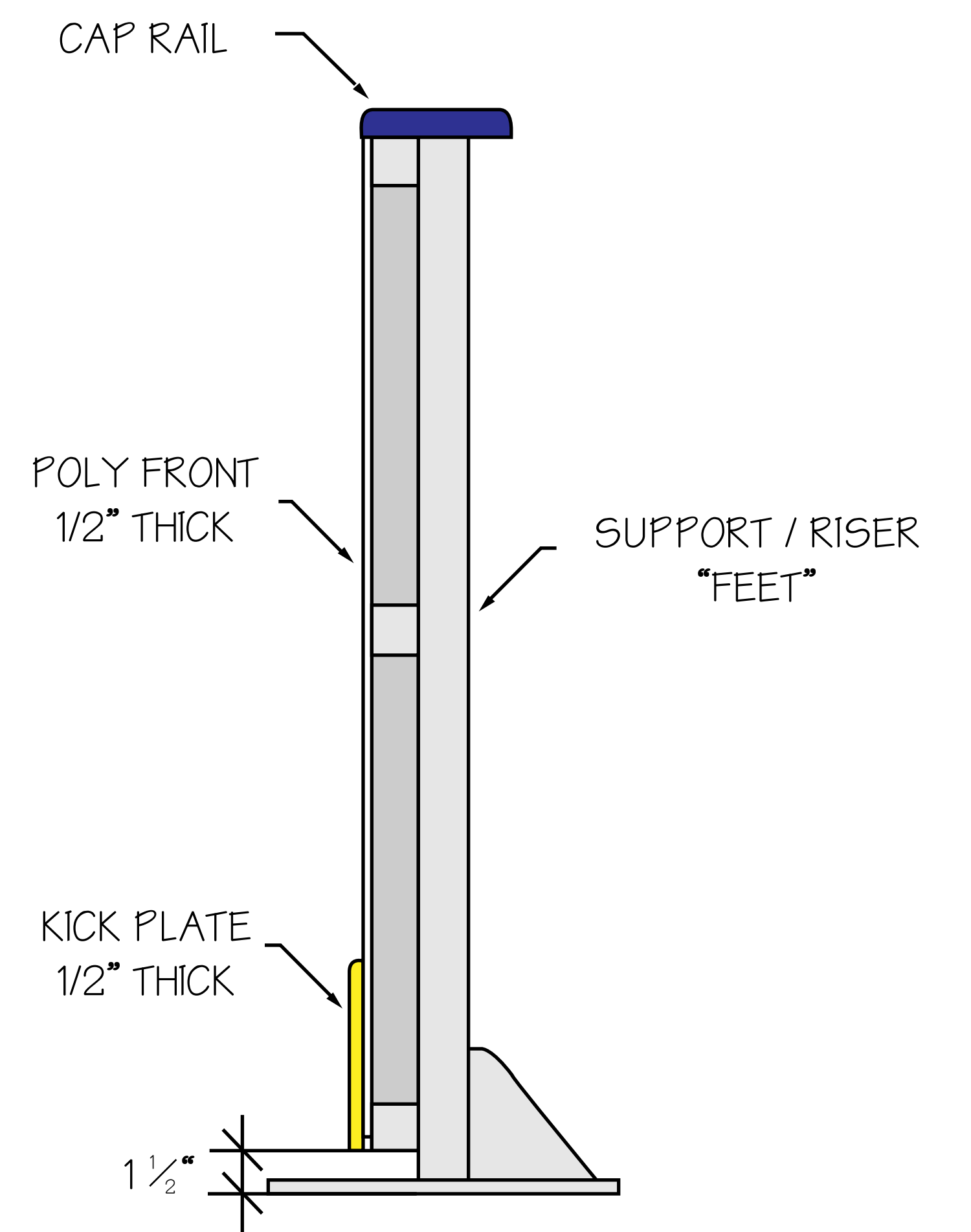
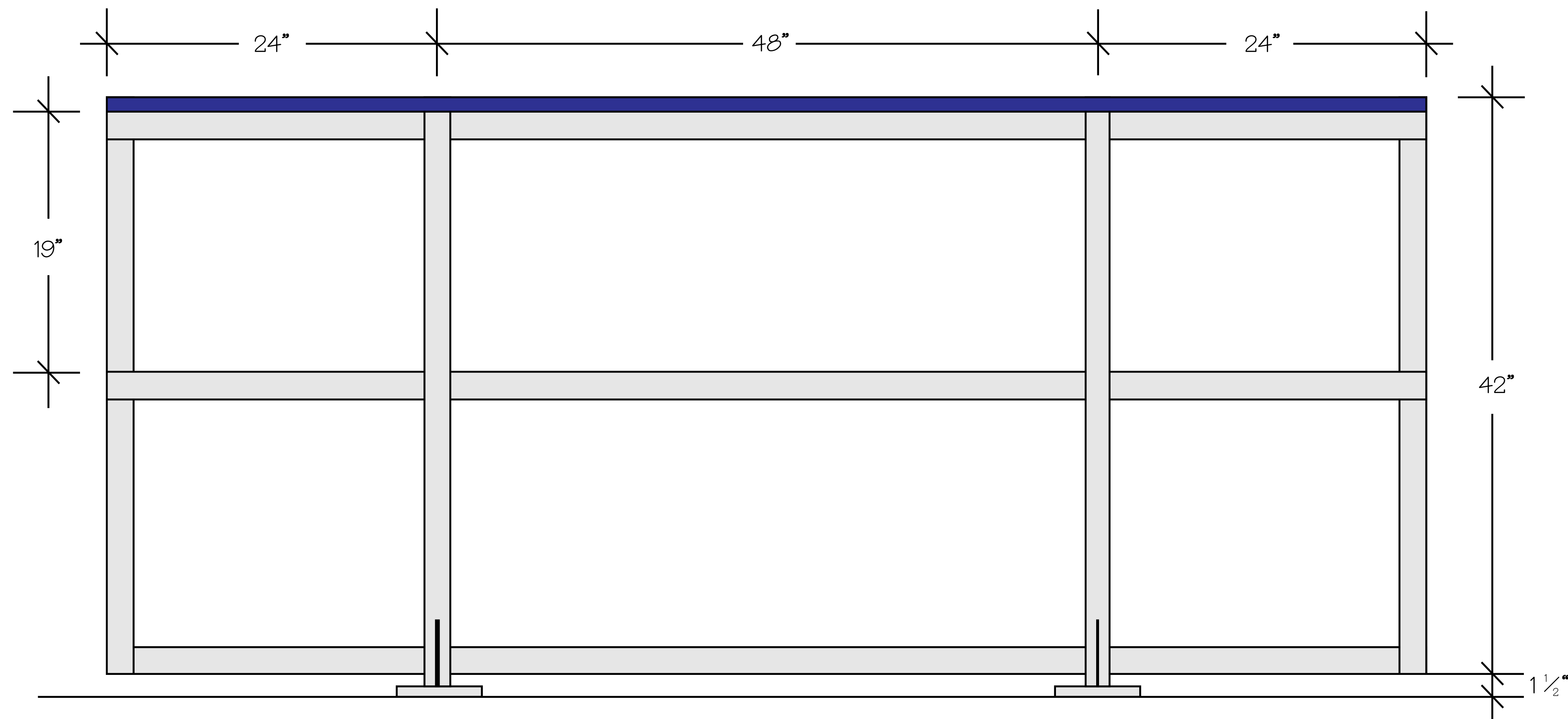
400 amps three-phase

200 amps three-phase

Balance distributed as single-phase

Image:





DASHERBOARDS



REVISIONS
MM/DD/YY
/ /

003

Exhibit – B2 Ice Chiller

The Ice Rink at Thompsons Point

Location B – Ice Chiller

Description:

100 ton ice chiller for ice rink refrigeration.

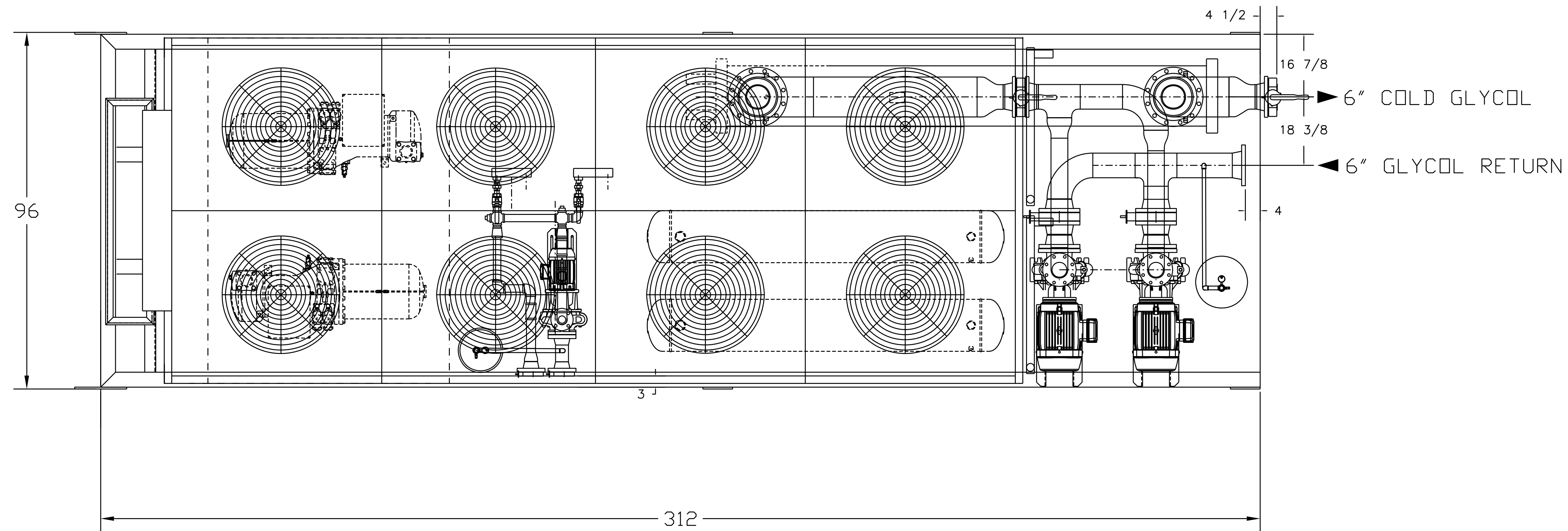
Specs:

- Manufacturer: Aggreko
- Volume: 100 ton
- Power: 150 kW
- Power supply: 480v 60kz
- Size: 196" x 91" x 99"

Image:

Sample image.

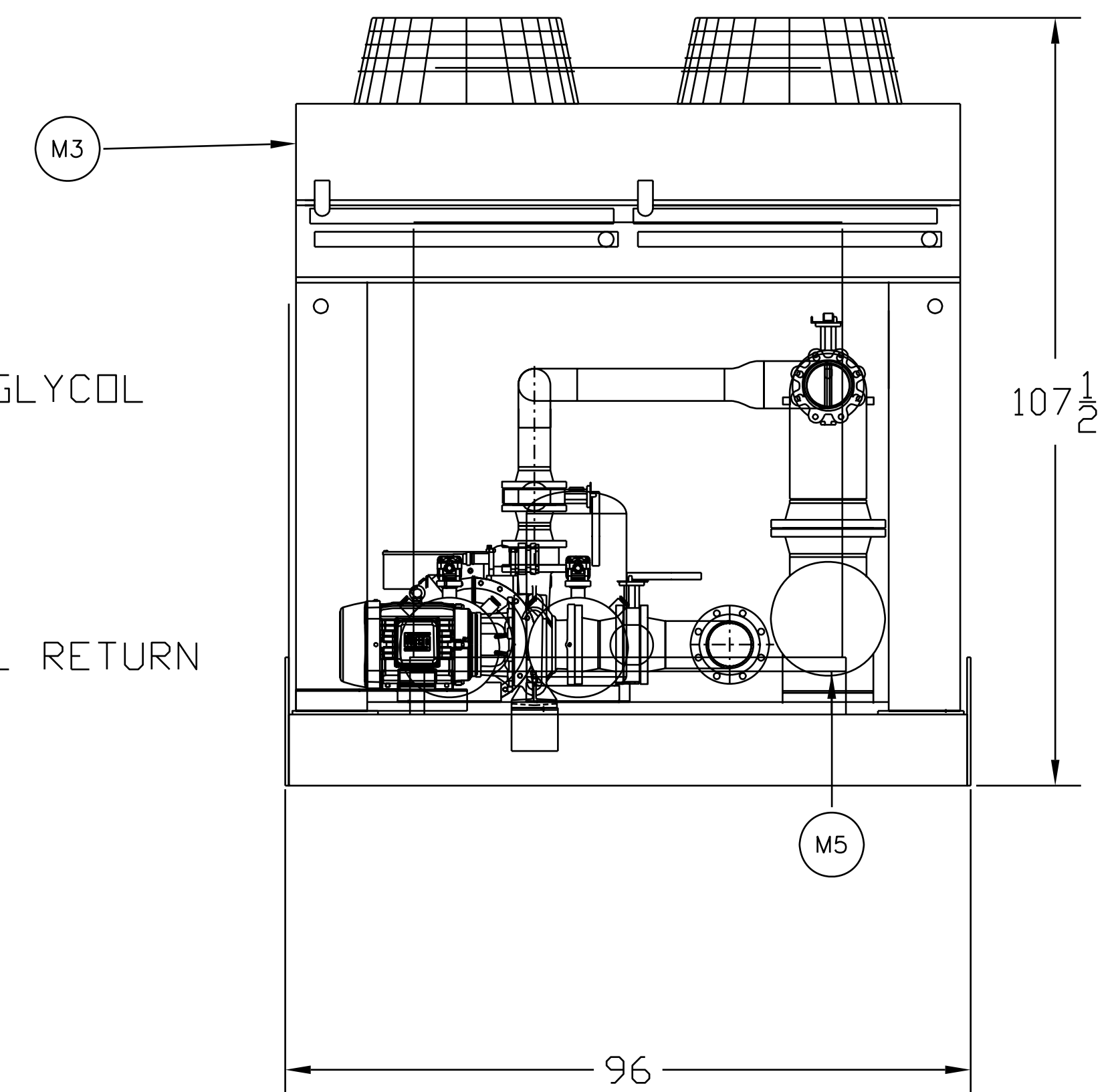
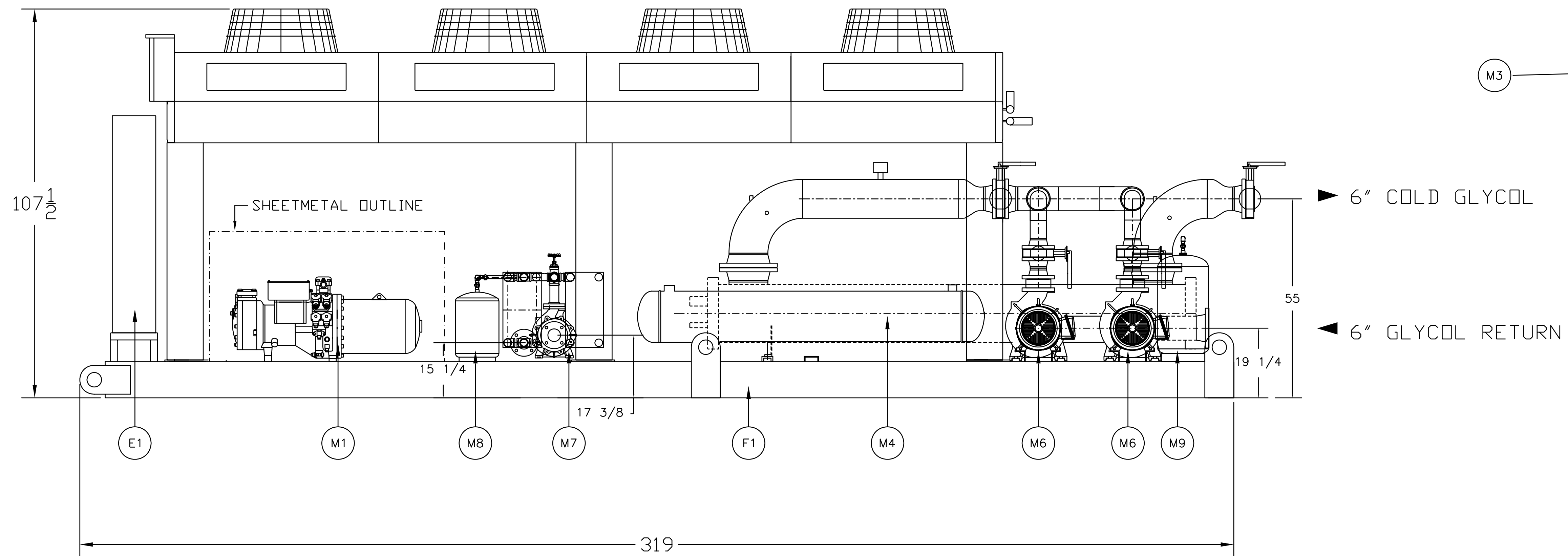




| REF | PART NO | DESCRIPTION | QTY |
|-----|----------------------|---------------------------------------|-----|
| E1 | WO2189AE | PANEL | 1 |
| F1 | WO2189AF | FRAME | 1 |
| M1 | SCH2-9000-FWD-200 | COMPRESSOR | 2 |
| M3 | CVR 149 | CONDENSER | 1 |
| M4 | RF1484 | RECEIVER | 2 |
| M5 | QTXC1611 | EVAPORATOR | 1 |
| M6 | WE95-103SF 15HPMOTOR | 8.625" DIA IMPELLER PUMP, COLD GLYCOL | 2 |
| M7 | WE102-800SF 3HPMOTOR | 7" DIA IMPELLER PUMP, WARM GLYCOL | 1 |
| M8 | AX-15V | EXPANSION TANK | 1 |
| M9 | AX-40V | EXPANSION TANK | 1 |

NOTES:

- 1: ESTIMATED SHIPPING WEIGHT :- 18,000 LBS
ESTIMATED FLOODED WEIGHT :- 20,000 LBS
- 3: ALL DIMENSIONS ARE ± 1/2" (EXCEPT FOR PIPE CONNECTION LOCATIONS WHICH ARE APPROXIMATE ONLY.)
- 4: NET COOLING CAPACITY IS 93.5 TR GROSS
@ 18°F 40% ETHYLENE GLYCOL FROM PROCESS
AND 15°F TO PROCESS @ 87°F AMBIENT AIR
(108 °F CONDENSING TEMPERATURE)
- 5: MAX. REFRIGERANT CHARGE IS 497LBS PER CIRCUIT.
R22
- 6: MAX. OIL CHARGE IS 507 OZ PER COMPRESSOR.
- 7: POWER REQUIREMENTS ARE 356 FLA, 370 MCA @ 460V/3/60



TYPICAL CHILLER DESIGN



REVISIONS
MM/DD/YY
/ /

005

Exhibit – B3 Warming Tent

The Ice Rink at Thompsons Point

Location C – Warming Hut

Description:

30' x 30' frame tent with solid walls and propane space heater.

Specs:

30' x 30' frame tent with walls.

Image:

Sample image.



The Ice Rink at Thompsons Point

Exhibit – B4 Office

The Ice Rink at Thompsons Point

Location D – Office

Description:

8' x 40' shipping container custom fabricated as an office. Building will serve as the ticket office, concessions and skate rental shop, serving the public via service windows.

Specs:

- 8' wide x 40' long
- 2 staff doors
- 3 service windows
- secure interior storage

Images:

Sample image.



Exhibit – B5 Bathroom Trailer

The Ice Rink at Thompsons Point

Location E – Bathroom

Description:

Winterized mobile bathroom trailer with dedicated single station men's and women's bathrooms.

Specs:

See attached.

- Restroom Trailers Size: 6' X 12'
- Number Stations: 2 rooms — 1 Men's w/toilet and urinal, 1 Women's with toilet and sink with hot water in each.
- Waste Tank: 370 Gal with external volume meter
- Fresh Tank: 150 Gal
- Winter Package:
 - Insulated
 - Heated

Image:

See attached.



Exhibit – B6 Food Truck

The Ice Rink at Thompsons Point

Location F – Food Truck

Description:

Food Truck TBD will offer prepared food concessions on a limited schedule.

Specs:

Approx. 8' x 20'

Image:

Sample image.



Exhibit – B7 Lounge

The Ice Rink at Thompsons Point

Location H – Lounge

Description:

Custom designed and built with 8' x 40' shipping container, the heated lounge will contain a beer and wine bar that will be open on a limited schedule.

Specs:

- 8' deep x 40' wide x 9' 6" tall
- 2 exits

Image:

Actual image

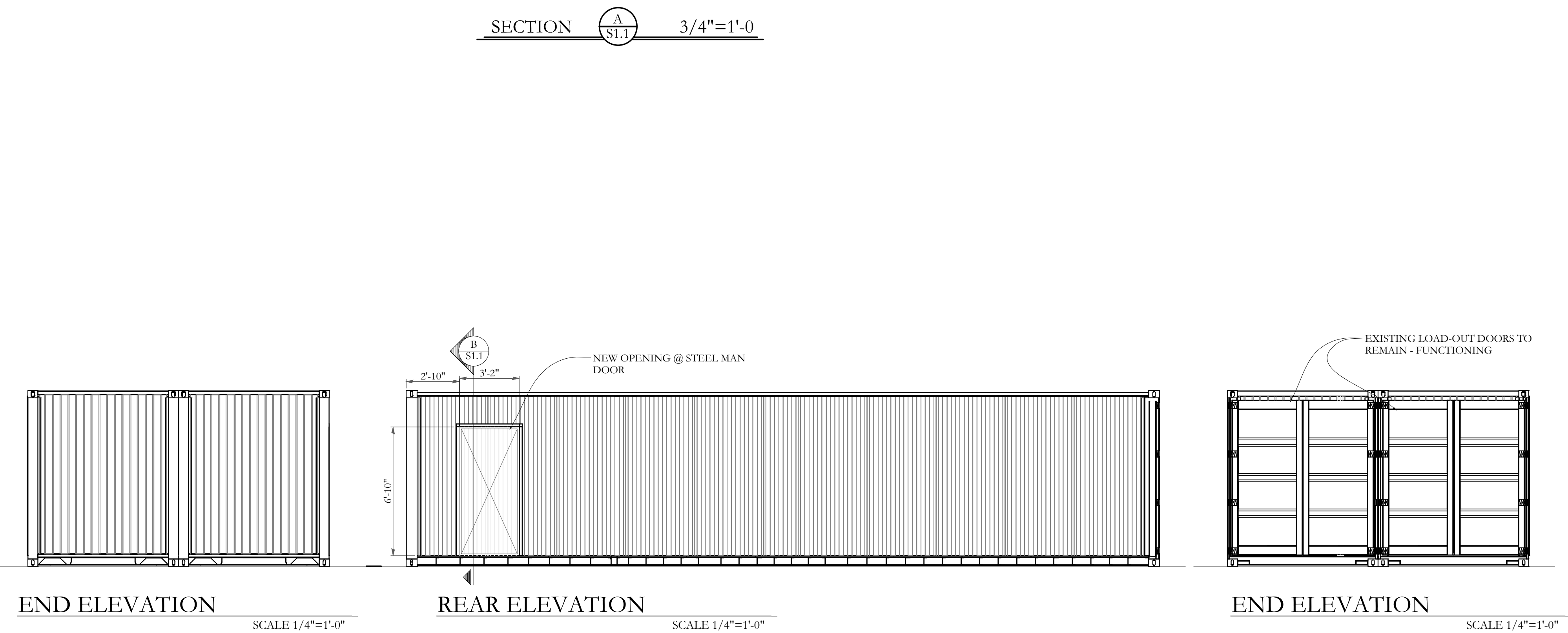
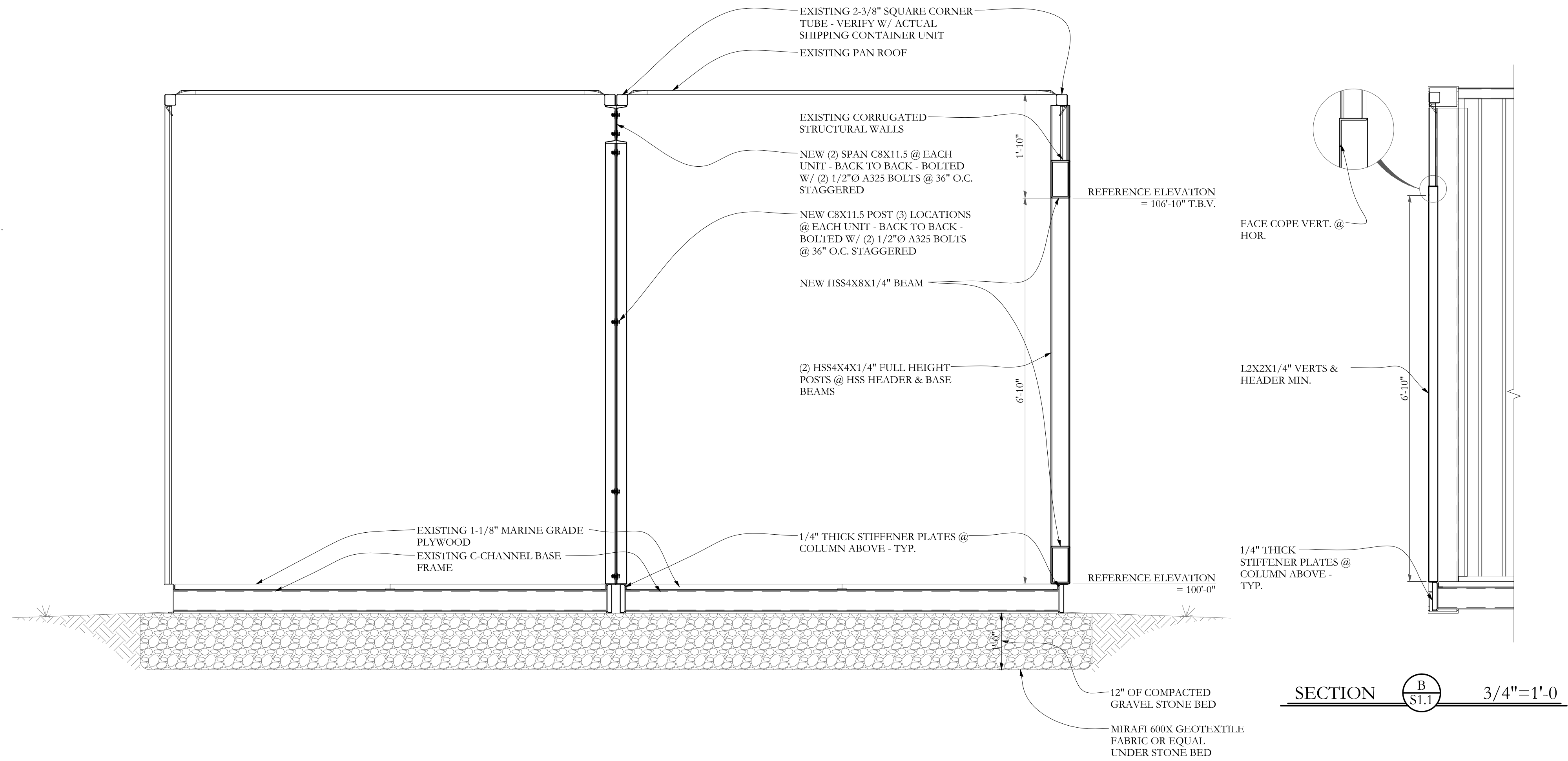
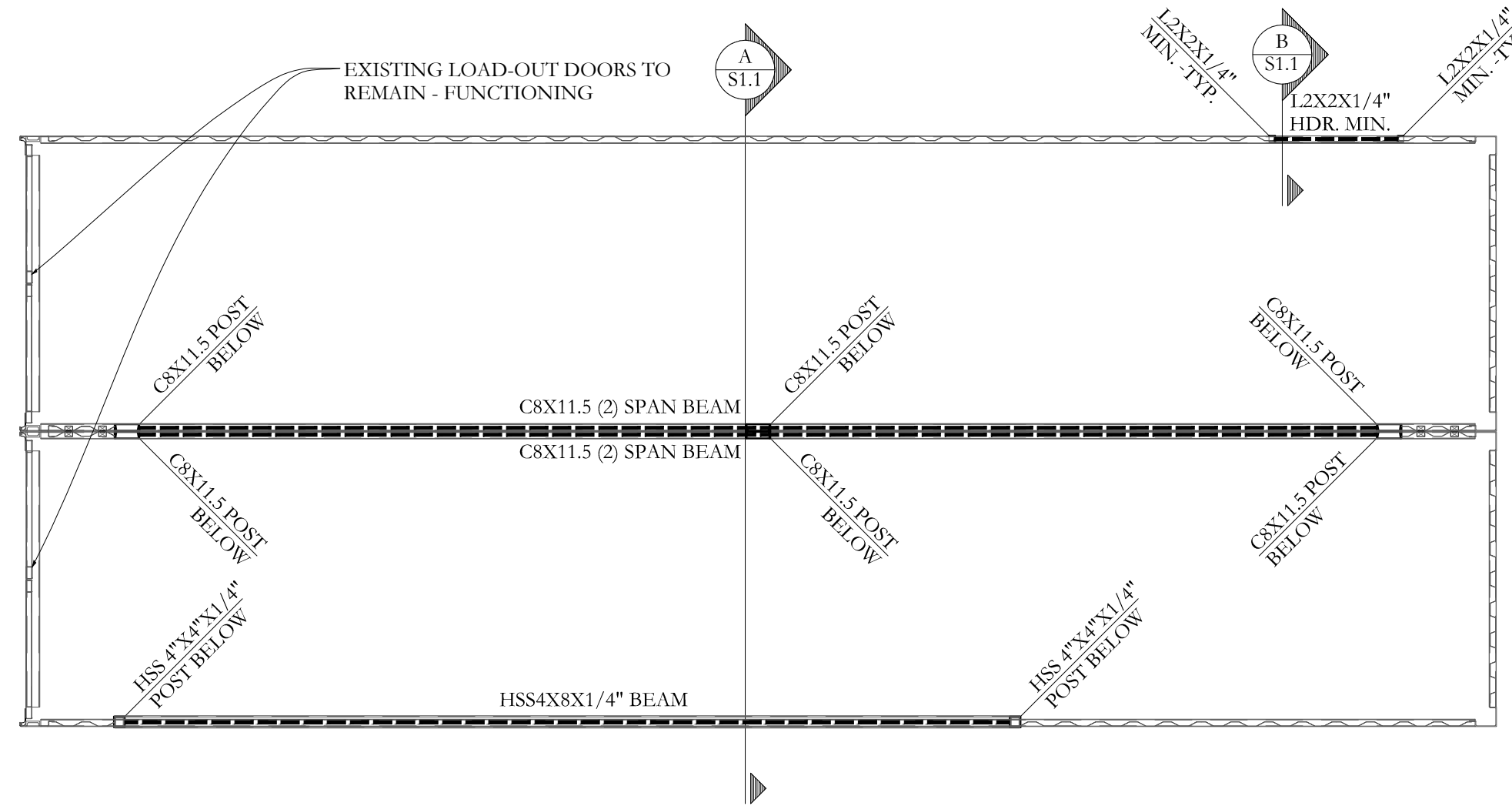


The Ice Rink at Thompsons Point

GENERAL STEEL NOTES

SI Job # 15-0078
 "POINT"
 Thompson Point, Maine

1. ALL DIMENSIONS AND CONDITIONS SHALL BE VERIFIED PRIOR TO FABRICATION.
2. ALL STEEL SHALL BE NEW AND UN-SPLICED STEEL CONFORMING TO THE MOST CURRENT ASTM DESIGNATIONS INDICATED:
 - 2.1. W-SHAPES: ASTM 1992 (Fy = 50 KSI)
 - 2.2. SQUARE AND RECTANGULAR HSS: ASTM A500, Gr. B (Fy = 46 KSI)
 - 2.3. ROUND HSS: ASTM A500, GR. B (Fy = 42 KSI)
 - 2.4. CHANNELS, ANGLES, PLATES, BARS AND RODS: ASTM A36 (Fy = 36 KSI)
 - 2.5. PIPES: ASTM A53, Gr. B (Fy = 35 KSI)
3. ALL WELDING BY QUALIFIED WELDERS. E70XX ELECTRODES.



Structural Integrity
 Consulting Engineers, Inc.
 77 Oak Street
 Portland, ME, 04101
 p. 207-774-4634
 f. 866-793-7835
 www.structuralintegrity.com
 BUILD WITH CONFIDENCE
 SI Job # 15-0078

STATE OF MAINE
 AARON C. JONES
 No. 10968
 LICENSED PROFESSIONAL ENGINEER
 June 30th, 2016

THOMPSON POINT CONCESSIONS
 Thompson Point
 Portland, Maine

Document Title
 Structural Steel Modifications

Sheet Title

Scale: AS NOTED

Date: 06/30/2015

Revisions

Sheet

S1.1

Exhibit – B8 Equipment Garage
The Ice Rink at Thompsons Point

Location C – Equipment Garage

Description:

12' x 20' heated shed garage for storing the ice resurfacer (Zamboni) and related rink maintenance equipment.

Specs:

Imperial Metal Garage

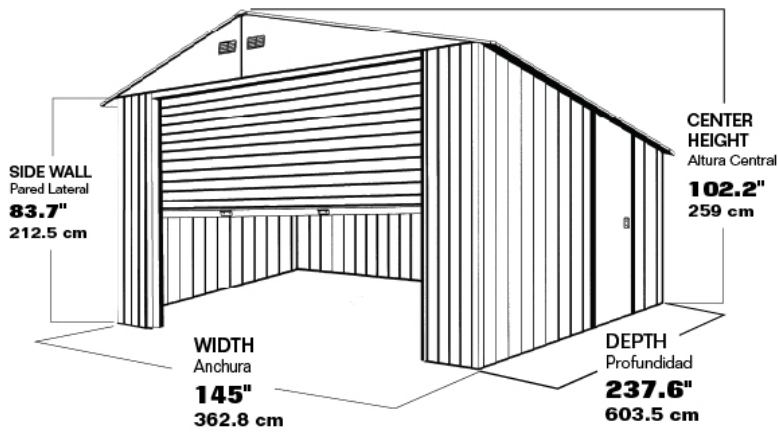
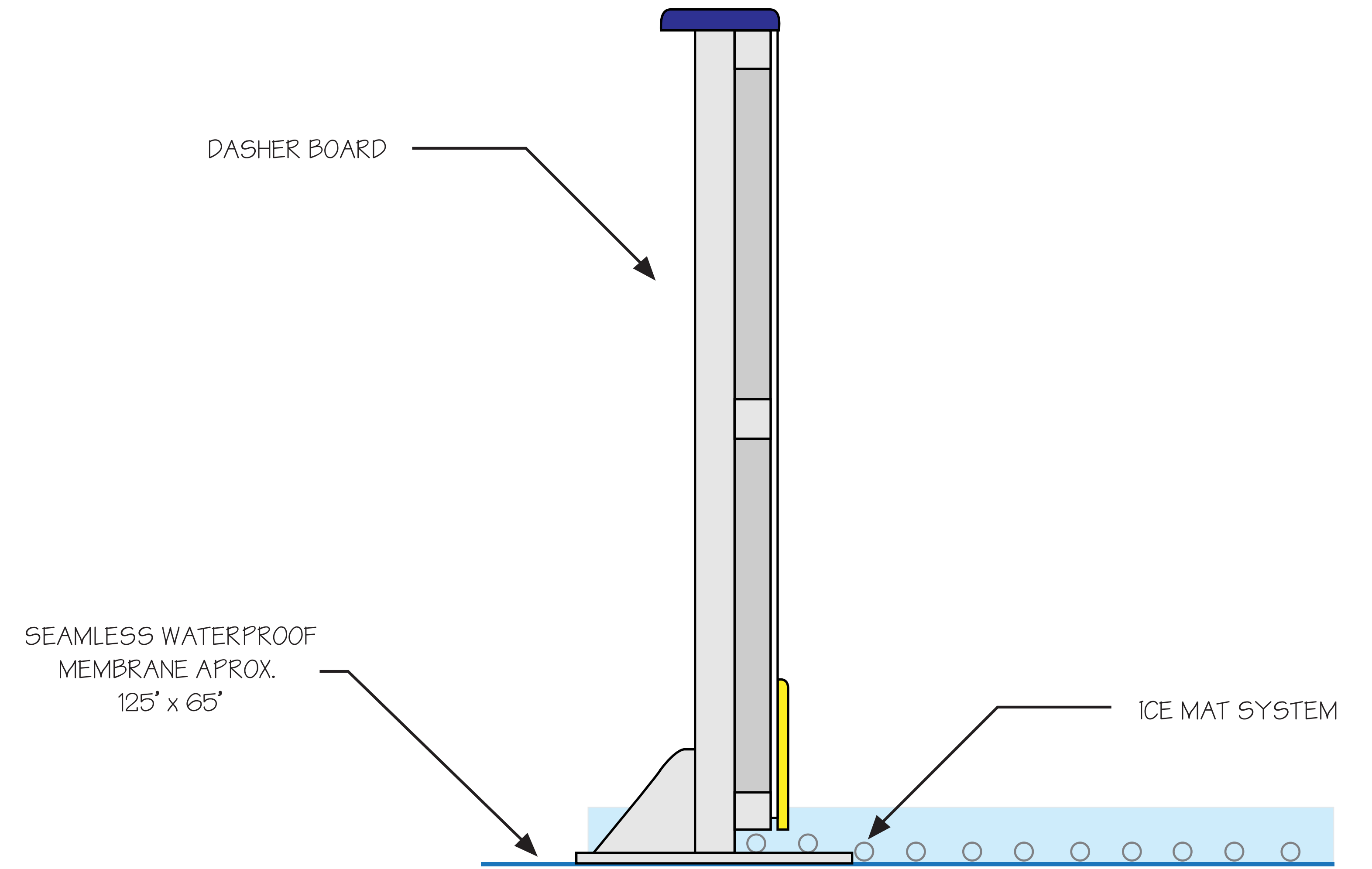
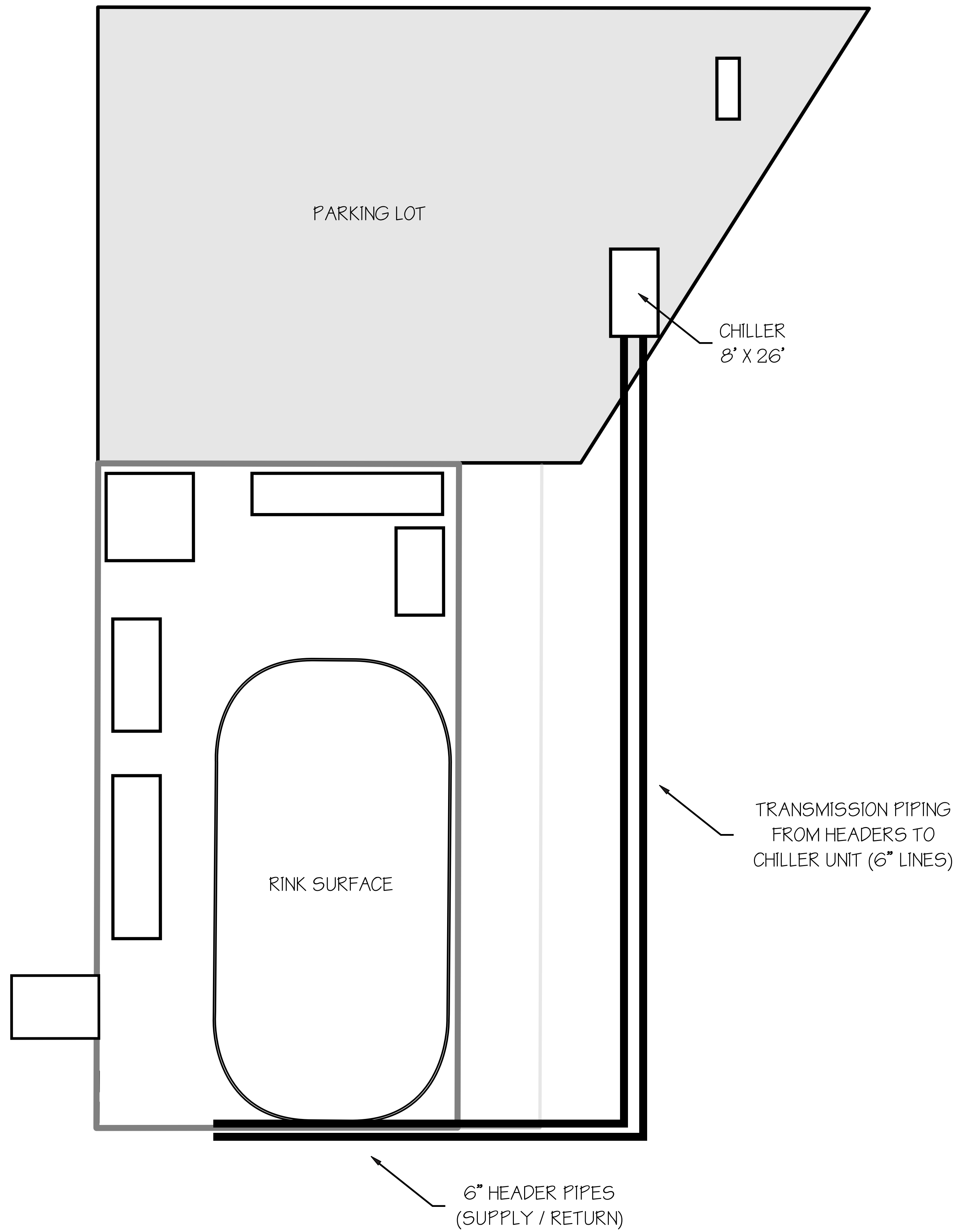


Image:

Sample image.





ICE MATS (TUBING)



THOMPSON'S POINT

MM/DD/YY

REVISIONS

/ /

004

Certificate of Flame Resistance



REGISTERED

FABRIC NUMBER

F76001

Issued by:

TOPTEC PRODUCTS, LLC

7601 Highway 221

Moore, SC 29369

DATE

MANUFACTURED

4/22/2013

Name: MAINE BAY CANVAS

W/O # 132129B

Address: 53 INDUSTRIAL WAY

City: PORTLAND

State: ME

Zip: 04103

Model: 30X30 EXPANDABLE-END

Color: BLACKOUT WHITE

Application: Inherently Flame Retardant

Certification is hereby made that:

The articles described are flame-retardant, approved and registered by the State Fire Marshal, and that the fabric is in conformance with the laws of the State of California, and the Rules and Regulations of the State Fire Marshal. Fabric has been tested and passes NFPA701-99, ULC214, MVSS302.

The Flame Retardant Process Used WILL NOT Be Removed By Washing

TOPTEC PRODUCTS, LLC.

And Is Effective For The Life Of The Fabric.

A handwritten signature in black ink, appearing to read "Fred Colangelo".

Production Manager

TTFC2013

