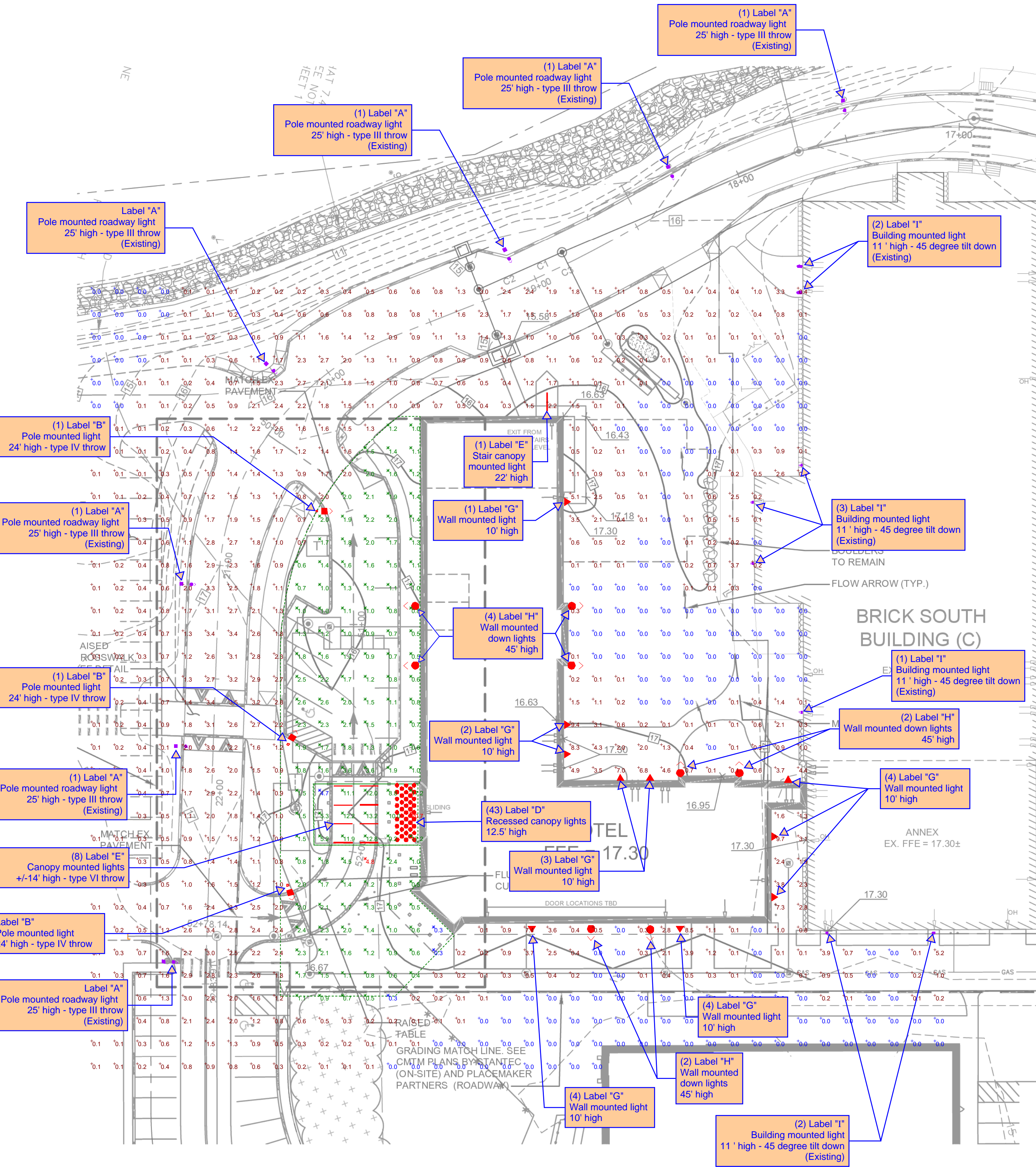



Description	Symbol	Avg	Max	Min	Max/Min	Avg/Min
Stat Zone #1	+	1.1 fc	20.7 fc	0.0 fc	N/A	N/A
Stat Zone #2	×	11.4 fc	20.7 fc	4.7 fc	4.4:1	2.4:1
Stat Zone #3	×	1.4 fc	4.8 fc	0.3 fc	16.0:1	4.7:1

Symbol	Label	Quantity	Manufacturer	Catalog Number	Description	Lamp	Number Lamps	Filename	Lumens Per Lamp	Light Loss Factor	Wattage
●	A	7	Holophane	LEDG 060 70 4K AS 2H L3	LEDGEN	10 X 12 4K LED ARRAY Cree XP-HP	1	Type S1 LEDG_060_70_4K_AS_2_H_L3.ies	8626.781	1	140
▲	B	3	PHILIPS GARDCO	P21-4-10SLA-NW	PUREFORM	(1) LIGHT ARRAY OF 64 LEDs DRIVEN AT 530mA	1	Type S4 P21-4-10SLA-NW.ies	8152.226	1	108
●	C	0	PHILIPS GARDCO	P21-2-55LA-NW	PUREFORM	(1) LIGHT ARRAY OF 48 LEDs DRIVEN AT 350mA	1	Type S2 P21-2-55LA-NW.IES	4504.913	1	52
●	D	43	WAC Lighting	HR-LED231R-27	Recessed light	XTE 2700K	1	HR-LED231R-27.IES	137	1	3.6
—	E	9	I2 Systems	V3285A-46CAB	Extruded black enamel aluminum housing with plastic end caps, clear plastic enclosure	24 white LEDs	1	V3285A-46CAB_4ft_65deg_3000K.ies	1612	1	32.33
▲	F	0	PHILIPS GARDCO	I21-3-26LA-NW	I21 LED SCONCE - GEN 2	(1) LIGHT ARRAY OF 16 LEDs DRIVEN AT 530mA	1	Type S7 I21-3-26LA-NW.ies	1849.195	1	26
▲	G	10	RAB LIGHTING INC.	SLIM12N	CAST BROWN PATENT FINNED METAL HOUSING, 1 CIRCUIT BOARD WITH 1 LED, MOLDED PLASTIC REFLECTOR WITH SPECULAR FINISH, CLEAR FLAT GLASS LENS IN MACHINED CYLINDRICAL BROWN METAL LENS FRAME WITH SEMI-SPECULAR INTERIOR.	ONE LED MODULE, XICATO XSM8027-1300/A3A, AIMED AT THE HORIZON.	1	SLIM12N.ies	1981	1	15.8
▲	H	8	WAC Lighting	DS-W505-U308-BK	Downlight	XHP35A-00-0000-0D0HD230G	1	DS-W505-U308.IES	144	1	10.9
▲	I	8	B-K LIGHTING, INC.	DE-LED-X21-FL-9-C-SM-DE-LED-X21-FL-9-C-C, SN-DE-LED-X21-FL-9-C-A, SN-DE-LED-X21-FL-9-C-B, SN-DE-LED-X21-FL-9-C-C, ST-DE-LED-X21-FL-9-C-A, ST-DE-LED-X21-FL-9-C-B, ST-DE-LED-X21-FL-9-C-C	MACHINED CYLINDRICAL METAL HOUSING, ONE LED MODULE, MACHINED METAL REFLECTOR HOUSING RING, MOLDED PLASTIC REFLECTOR WITH SPECULAR FINISH, CLEAR FLAT GLASS LENS IN MACHINED CYLINDRICAL BROWN METAL LENS FRAME WITH SEMI-SPECULAR INTERIOR.	ONE LED MODULE, XICATO XSM8027-1300/A3A, AIMED AT THE HORIZON.	1	Type S10 DE-LED-X21-Fl-ies	Absolute		17.7



LABEL "G"



SLIM12N
RAB


Project: Type: _____
Prepared By: _____
Date: _____

Driver Info: Constant Current, LED Info: 120V, 0.15A, Color Temp: 4000K, 0.06A, Color Rendering: 72 CRI, 24W, 0.06A, LFL/Leakage: 100000, 2.7V, 0.06A, Lenses: 125 LPM, Foot Candles: 1800, Efficiency: 70%

Technical Specifications:
UL Listing: Heavy-duty mounting bracket with hinged housing for easy installation. Suitable for mounting within 2" above the ground.
UL Label: The product is listed by Design Light Consortium (DLC) as an ultra-efficient premium product that qualifies for the highest tier of incentives from DLC Member Utilities.
DLC Product Code: PGLB230A
ADA Compliant: Yes
Dark Sky Approved: Yes
IP Rating: IP66
Cold Weather Starting: Minimum starting temperature is -40°C (-40°F)
Maximum Ambient Temperature: 50°C (122°F)
Housing: Precision cast aluminum housing.

Buy American Act Compliance: This fixture is manufactured in the United States of America and complies with the Buy American Act requirements.

LABEL "B" & "C"




BRICK NORTH AND SOUTH BUILDINGS AT THE FOREFRONT AT THOMPSON'S POINT LIGHTING FIXTURE TYPES S2, S3, S4, S5 & S6

TYPE S2: #P21-DIM-A1-1-2-55LA-NW-UNV-BL-P-C
TYPE S3: #P21-DIM-A1-4-10SLA-NW-UNV-BL-P-C
TYPE S4: #P21-DIM-A1-4-BLC-10SLA-NW-UNV-BL-P-C
TYPE S5: #P21-DIM-A1-1-5M-10SLA-NW-UNV-BL-P-C
TYPE S6: #P21-DIM-A1-1-2-55LA-NW-UNV-BL-P-C

Product Description: The DS-W505-U is a high performance, ultra-narrow beam LED wall mount light. It features a high performance LED light source with a built-in ultra-narrow beam precision optics. An appealing cylindrical profile is perfect for accent lighting.

Specifications:
Input: 120V, 37Watt, 0.08kwh
Output: 0, 100, 200, 300, 400, 500, 600, 700, 800, 900, 1000 lumens
Beam Angle: 4°
Mounting: 1/2" x 1/2" x 1/2" (1.27 x 1.27 x 1.27 cm)
Finish: Black, White, Bronze, Silver, Gold, Copper, Nickel, Chrome, Stainless Steel, Polished Brass, Painted Colors
Options: Diffuser, Lens, Lens Cap, Lens Gasket, Lens Seal, Lens O-Ring, Lens Gasket, Lens Seal, Lens O-Ring, Lens Gasket, Lens Seal, Lens O-Ring

LABEL "H"

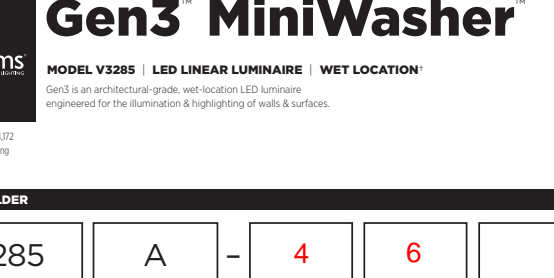


TUBE ARCHITECTURAL DS-W505-U WAC LIGHTING
Ultra Narrow Beam LED Wall Mounts
Responsible Lighting®

Product Description: The DS-W505-U is a high performance, ultra-narrow beam LED wall mount light. It features a high performance LED light source with a built-in ultra-narrow beam precision optics. An appealing cylindrical profile is perfect for accent lighting.

Specifications:
Input: 120V, 37Watt, 0.08kwh
Output: 0, 100, 200, 300, 400, 500, 600, 700, 800, 900, 1000 lumens
Beam Angle: 4°
Mounting: 1/2" x 1/2" x 1/2" (1.27 x 1.27 x 1.27 cm)
Finish: Black, White, Bronze, Silver, Gold, Copper, Nickel, Chrome, Stainless Steel, Polished Brass, Painted Colors
Options: Diffuser, Lens, Lens Cap, Lens Gasket, Lens Seal, Lens O-Ring, Lens Gasket, Lens Seal, Lens O-Ring

Gen3 MiniWasher



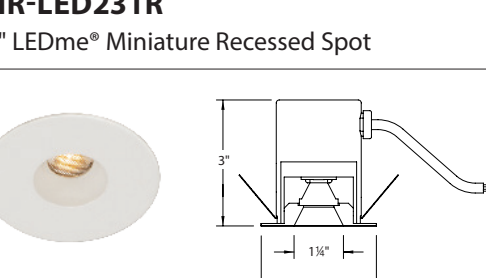
zSystems MODEL V3285 LED LINEAR LINEAR WWT LOCATION

FEATURE BUILD:
TYPE: V3285
OUTPUT: A, 9W/12V
LENGTH: 4
BEAM ANGLE: 4
LED COLOR: CBA
OPTIONS: NONE

ACCESSORIES: LUMINAIR, HOOPER RATED, BRACKETS, RAMPERS (INDOOR ONLY), DOWNING LANE, OUTDOOR RATED, EXTENDED BRACKETS

PHOTOMETRICS: Includes beam spread diagram and photometric data table.

LABEL "D"

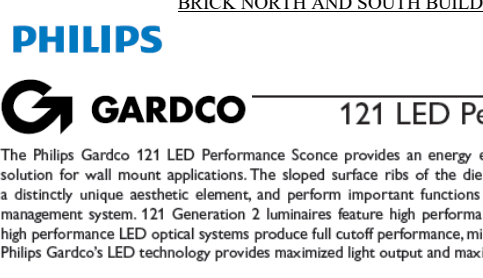


HR-LED231R 1" LEDm® Miniature Recessed Spot
WAC LIGHTING
Responsible Lighting®

Product Description: The HR-LED231R is a high performance, 1" LEDm miniature recessed spot. It features a high performance LED light source with a built-in ultra-narrow beam precision optics. An appealing cylindrical profile is perfect for accent lighting.

Specifications:
Input: 120V, 37Watt, 0.08kwh
Output: 0, 100, 200, 300, 400, 500, 600, 700, 800, 900, 1000 lumens
Beam Angle: 4°
Mounting: 1/2" x 1/2" x 1/2" (1.27 x 1.27 x 1.27 cm)
Finish: Black, White, Bronze, Silver, Gold, Copper, Nickel, Chrome, Stainless Steel, Polished Brass, Painted Colors
Options: Diffuser, Lens, Lens Cap, Lens Gasket, Lens Seal, Lens O-Ring, Lens Gasket, Lens Seal, Lens O-Ring

LABEL "E"



BRICK NORTH AND SOUTH BUILDINGS AT THE FOREFRONT AT THOMPSON'S POINT LIGHTING FIXTURE TYPE S7

PHILIPS GARDCO 121 LED Performance Spot - Generation 2

Product Description: The Philips Gardco 121 LED Performance Spot is a high performance, 121 LED performance spot. It features a high performance LED light source with a built-in ultra-narrow beam precision optics. An appealing cylindrical profile is perfect for accent lighting.

Specifications:
Input: 120V, 37Watt, 0.08kwh
Output: 0, 100, 200, 300, 400, 500, 600, 700, 800, 900, 1000 lumens
Beam Angle: 4°
Mounting: 1/2" x 1/2" x 1/2" (1.27 x 1.27 x 1.27 cm)
Finish: Black, White, Bronze, Silver, Gold, Copper, Nickel, Chrome, Stainless Steel, Polished Brass, Painted Colors
Options: Diffuser, Lens, Lens Cap, Lens Gasket, Lens Seal, Lens O-Ring, Lens Gasket, Lens Seal, Lens O-Ring