

**JELLYFISH DESIGN NOTES**

JELLYFISH TREATMENT CAPACITY IS A FUNCTION OF THE CARTRIDGE SELECTION AND THE NUMBER OF CARTRIDGES. THE STANDARD MANHOLE STYLE IS SHOWN. 36" MANHOLE JELLYFISH PEAK TREATMENT CAPACITY IS 0.45 CFS. IF THE SITE CONDITIONS EXCEED 0.45 CFS AN UPSTREAM BYPASS STRUCTURE IS REQUIRED.

CARTRIDGE SELECTION	40"	27"	15"
CARTRIDGE DEPTH	54"	40"	27"
OUTLET INVERT TO STRUCTURE INVERT (A)	6'-5"	5'-3"	4'-2"
FLOW RATE HIGH FLOW (DRANDOWN) (cfs) (SEE CODE)	0.15 / 0.09	0.13 / 0.08	0.09 / 0.045
MAX. CARTS HIGH FLOW / DRANDOWN	2 / 1		

THIS PROJECT

SEE SCHEDULE IN DETAIL 'D'

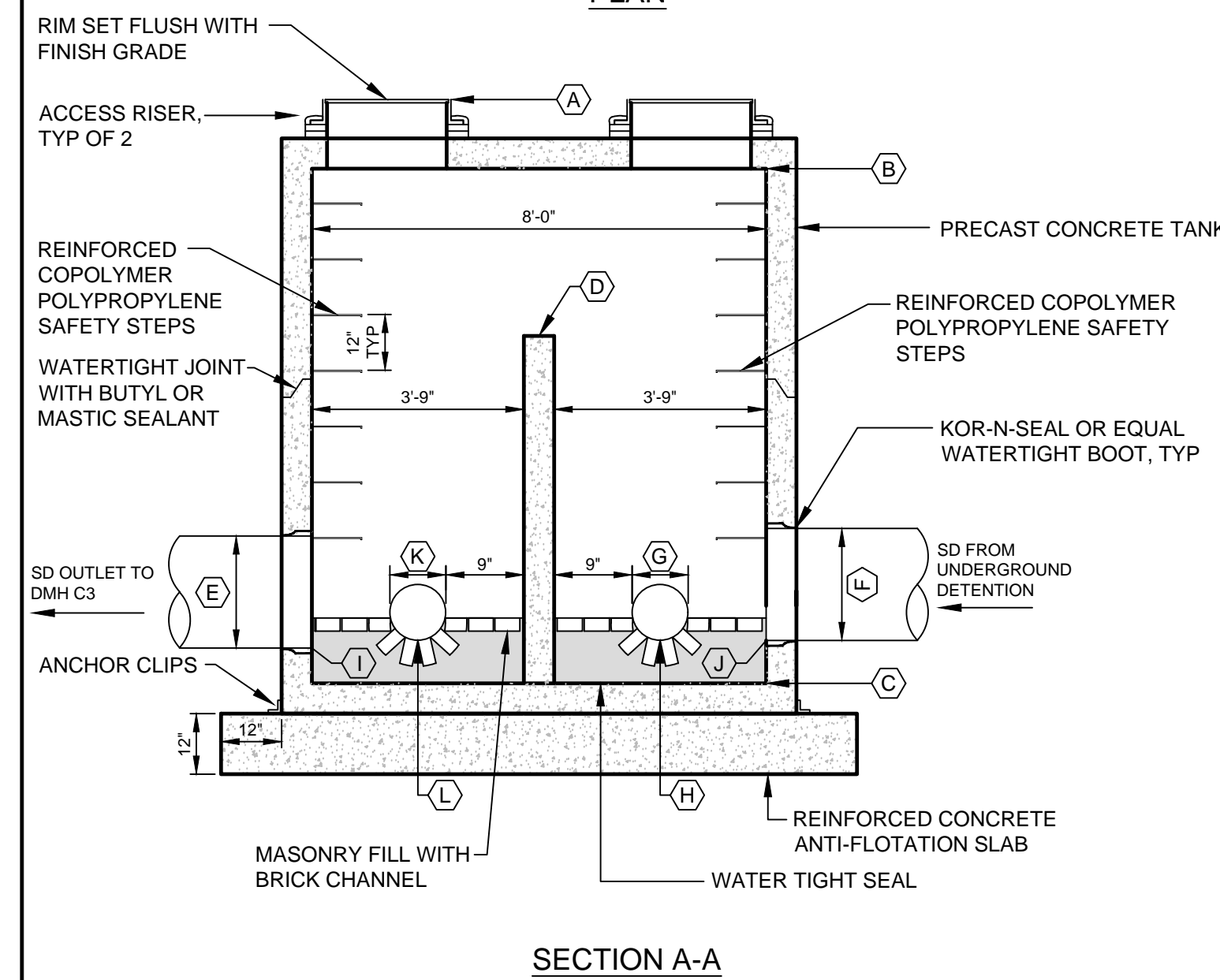
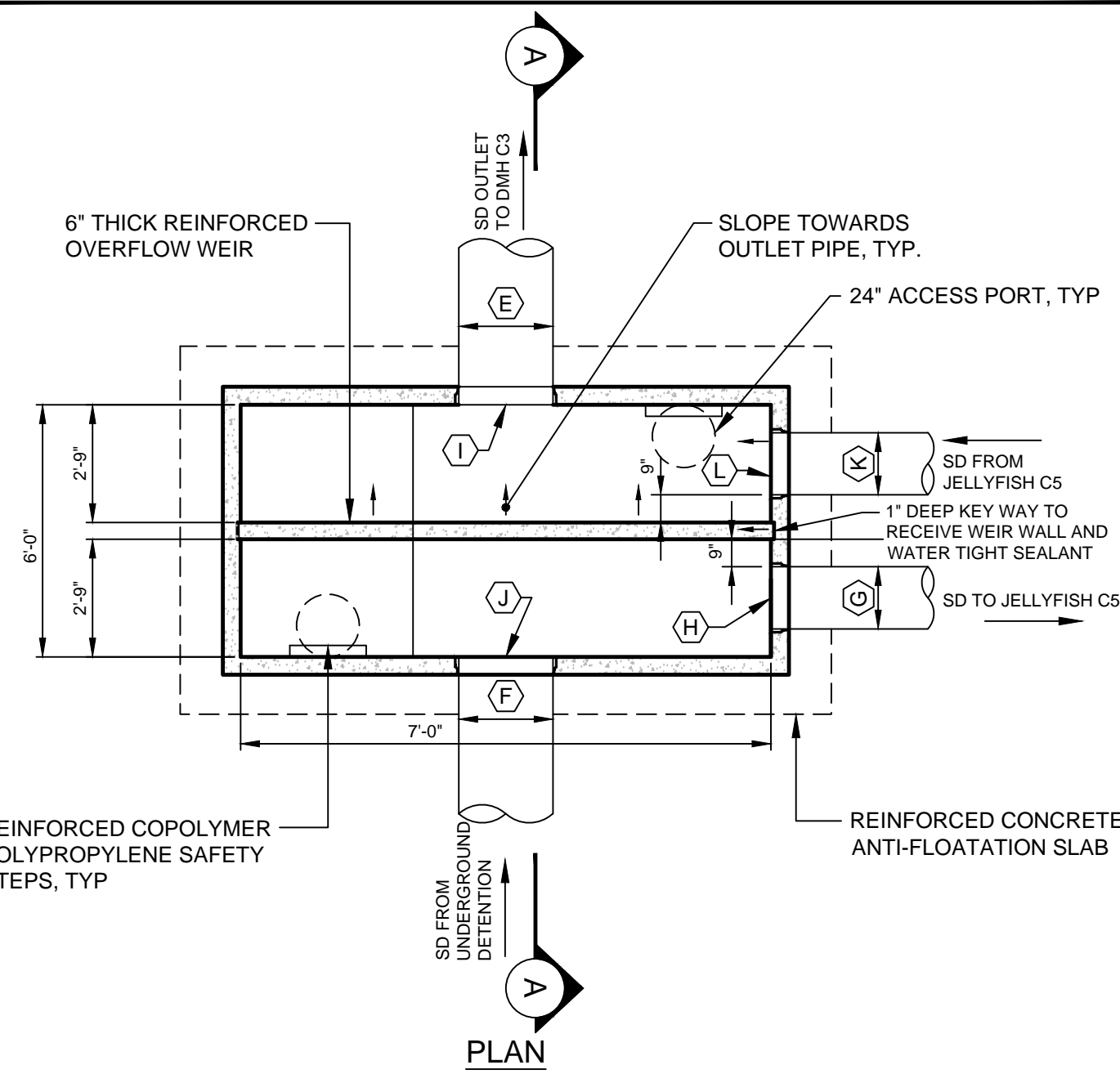
**(A) JELLYFISH JF4 STANDARD DETAIL**  
N.T.S.

**ZONE C DATA REQUIREMENTS**

STRUCTURE ID	Schedule ID	Zone	
C4	C	C	
WATER QUALITY FLOW RATE (cfs)	0.066		
PEAK FLOW RATE (cfs)	5.50		
RETURN PERIOD OF PEAK FLOW (yrs)	25		
# OF CARTRIDGES REQUIRED (HF / DD)	2 / 1		
CARTRIDGE SIZE	54"		
PIPE DATA:	I.E.	MATERIAL	DIAMETER
INLET PIPE #1	-	HDPE	12"
INLET PIPE #2	-	N/A	
OUTLET PIPE	-	HDPE	12"
RIM ELEVATION			16.70
ANTI-FLOTATION SOIL	WIDTH	HEIGHT	
	1'	13.75	

NOTES/SPECIAL REQUIREMENTS:  
 \* MAIN DEPT. REQUIRES UPSTREAM WQU TO DRAIN IN 24-48 HOURS.  
 \* CONTECH RESPONSIBLE FOR SIZING INTERNAL ORIFICE TO CONTROL PEAK WATER QUALITY OUTFLOW TO REQUIRED RATE  
 \* PER ENGINEER OF RECORD

**(B) JELLYFISH TREATMENT UNIT DATA REQUIREMENTS**  
N.T.S.



- NOTES:**
- ALL CONCRETE TO HAVE A MINIMUM OF 4,000 PSI COMPRESSIVE STRENGTH AT 28 DAYS
  - DESIGN LOAD FOR H-20 WHEEL LOAD
  - STRUCTURE TO CONFORM TO ASTM-C478 SPECIFICATIONS
  - SET STRUCTURE ON 12" THICK CRUSHED STONE

**OVERFLOW DIVERSION STRUCTURE SCHEDULE**

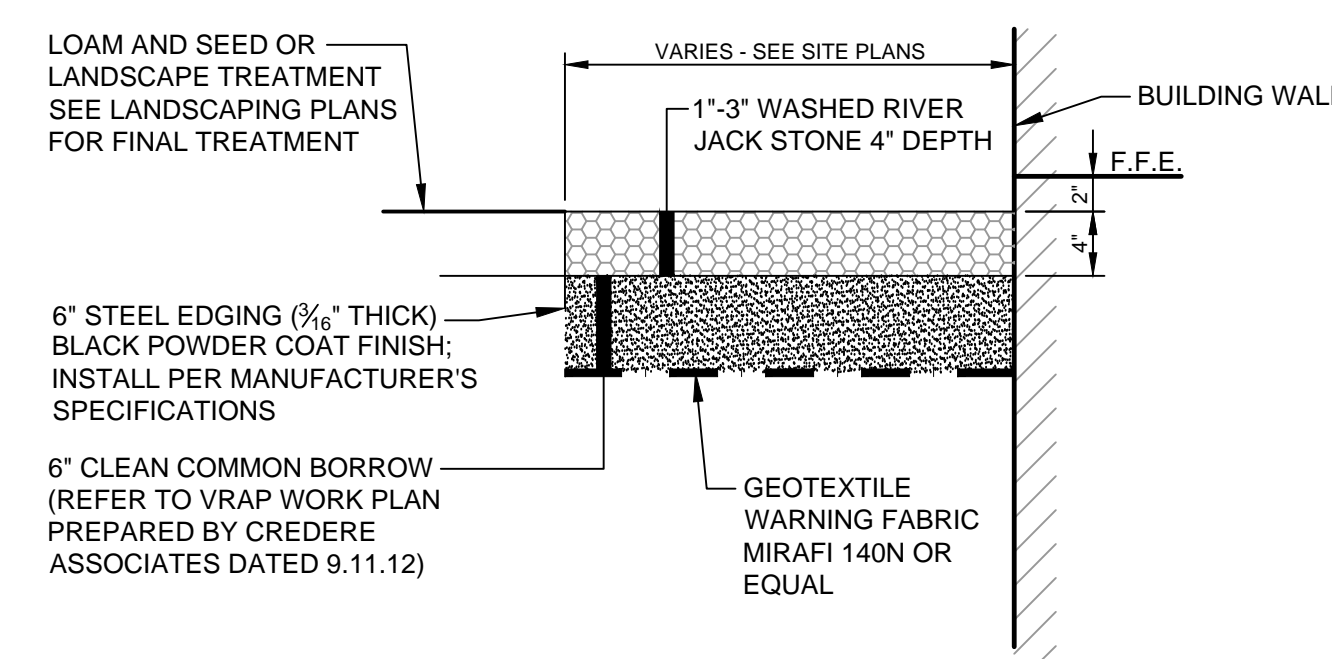
ITEM DESCRIPTION	ZONE C
(A) APPROXIMATE RIM ELEVATION	17.00±
(B) TOP OF INSIDE OF TANK	14.75
(C) BOTTOM OF INSIDE OF TANK	8.92
(D) TOP OF WEIR WALL	13.02
(E) DIAMETER OF OVERFLOW OUTLET PIPE	24"
(F) DIAMETER OF INLET PIPE	24"
(G) DIAMETER OF OUTLET PIPE TO JELLYFISH	12"
(H) INV OF OUTLET PIPE TO JELLYFISH	10.52
(I) INV OF OVERFLOW OUTLET PIPE	9.92
(J) INV OF INLET PIPE	10.52
(K) DIAMETER OF OUTLET PIPE FROM JELLYFISH	12"
(L) INVERT OF OUTLET PIPE FROM JELLYFISH	10.02

**(C) OVERFLOW DIVERSION STRUCTURE D1**  
N.T.S.

**Jellyfish Unit Schedule**

Schedule ID	Zone
Schedule	C
A-Outlet Inv. to Bottom of Structure (ft)	6.42
B-Finished Grade to Outlet Inv.	6.68
C-Required Outflow (cfs)	0.066
D-Inlet Inv. From Water Quality Storage	10.52
E-Outlet Inv.	10.02
F-Under side of Slab	15.60
G-Rim Elevation	16.70
H-Under side of Slab to Outlet Inv. (ft)	5.5
Hatch Required or 36" Casting?	NO

**(D) JELLYFISH UNIT SCHEDULE**  
N.T.S.



**NOTE:**  
USE ALONG WEST SIDE OF BRICK NORTH (BUILDING A) AND NORTH AND SOUTH SIDES OF BRICK SOUTH (BUILDING C)

**(G) TYPICAL DRIP STRIP DETAIL**  
N.T.S.

PRELIMINARY – NOT FOR CONSTRUCTION

		PROJECT <b>THE FOREFRONT AT THOMPSON'S POINT FOREFRONT HOTEL</b>	PLACEMAKER PARTNERS, LLC 501 DANFORTH STREET PORTLAND, ME 04102 bo@placemakerpartners.com
SHEET TITLE <b>STORMWATER DETAILS - JELLYFISH SYSTEMS</b>		DRAWN: DB DESIGNED: BEK FILE NAME: HOTEL-DET_JF.dwg SHEET	DATE: AUG. 2017 SCALE: N.T.S.
CLIENT <b>FOREFRONT HOTELIERS, LLC</b>		C-7.0	