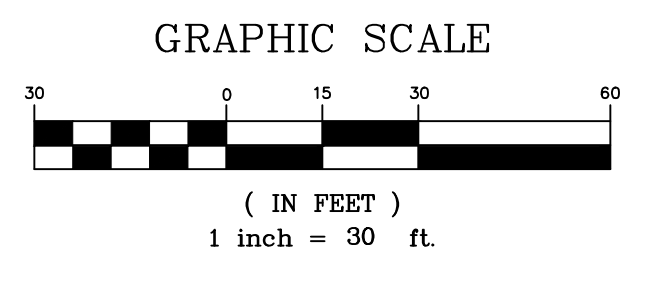


NOTE:

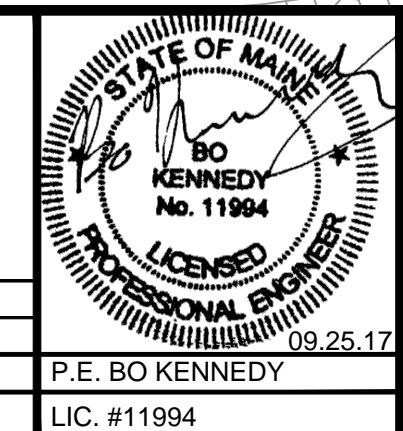
THIS PLAN REPRESENTS EXISTING CONDITIONS PRIOR TO COMPLETION OF SITE PLAN IMPROVEMENTS ATTENDANT WITH ROADWAY EXTENSION SOUTH OF BRICK SOUTH PLANS DEPICT DESIGN ELEMENTS CURRENTLY UNDER CONSTRUCTION. AS-BUILT PLANS WILL BE MADE AVAILABLE FROM THE CONTRACTOR (SHAW BROS.) UPON REQUEST.

- PLAN REFERENCES:**
- BOUNDARY AND TOPOGRAPHIC DATA PROVIDED BY SEBAGO TECHNICS AS SHOWN ON A PLAN TITLED ALTA/ACSM LAND TITLE SURVEY OF 1 THOMPSON'S POINT, DATED MAY 27, 2011 AND LAST REVISED ON NOVEMBER 23, 2011. ADDITIONAL SURVEY ON SUBURBAN PROPANE PROVIDED ON MARCH 30, 2014, BY SEBAGO TECHNICS.
 - BORINGS AND TEST PIT LOCATIONS NOT SHOWN. AVAILABLE UPON REQUEST.
 - ADDITIONAL UTILITY DATA TAKEN FROM CITY AND UTILITY COMPANY RECORD DRAWINGS, AS WELL AS OBSERVATIONS BY PLACEMAKER PARTNERS, LLC PERSONNEL DURING SITE VISITS.

PRELIMINARY – NOT FOR CONSTRUCTION



REV	DATE	DESCRIPTION
1	9/25/2017	FINAL SITE PLAN SUBMISSION



PROJECT
**THE FOREFRONT AT THOMPSON'S POINT
FOREFRONT HOTEL**

SHEET TITLE
EXISTING CONDITIONS PLAN

CLIENT
FOREFRONT HOTELIERS, LLC

PLACEMAKER PARTNERS, LLC
501 DANFORTH STREET
PORTLAND, ME 04102
bo@placemakerpartners.com

DRAWN: DB DATE: AUG. 2017
DESIGNED: BEK SCALE: 1" = 30'
FILE NAME: HOTEL-DEMO.dwg
SHEET **C-2.0**