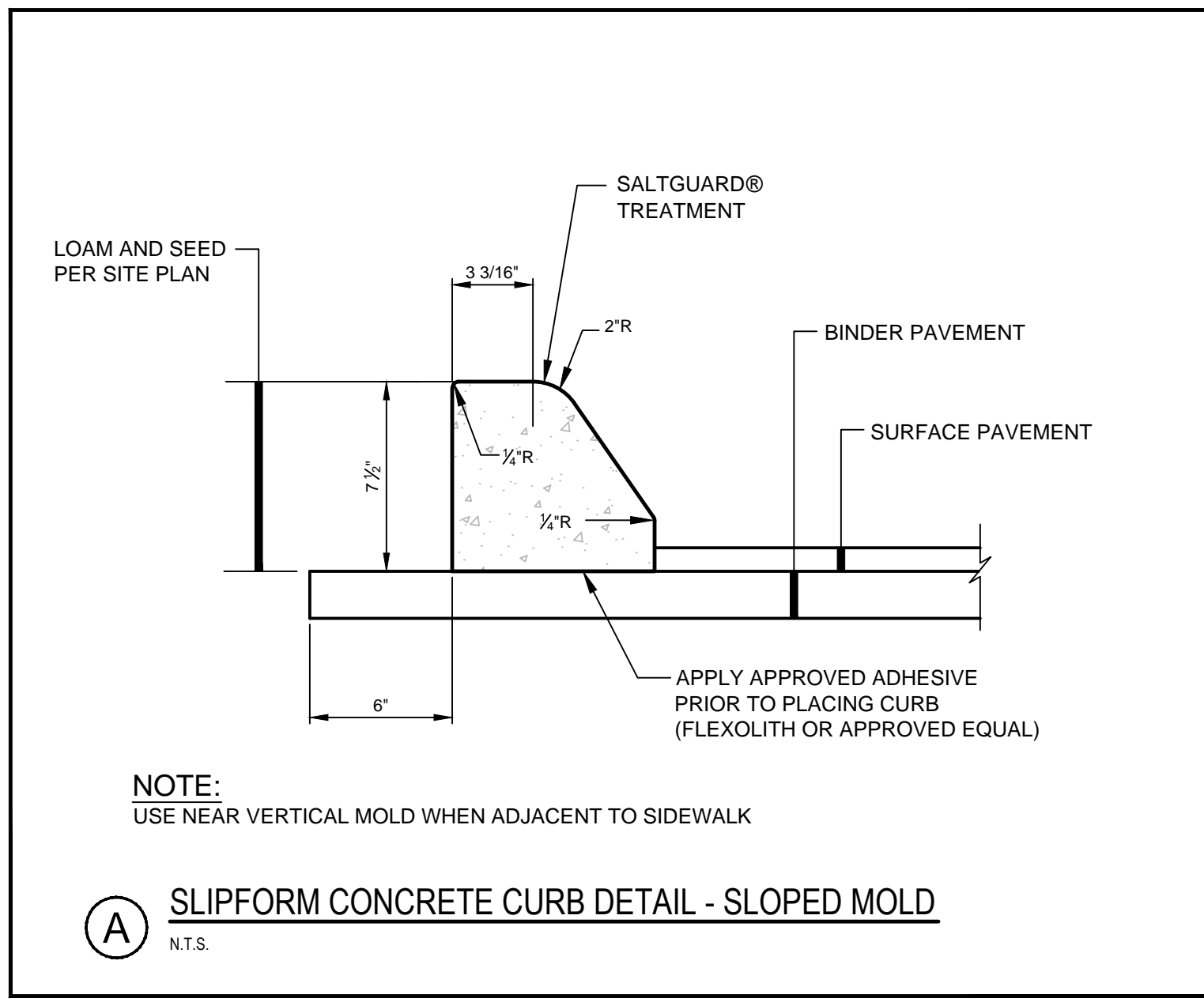


Copyright Reserved

The Contractor shall verify and be responsible for all dimensions. DO NOT scale the drawing - any errors or omissions shall be reported to Stantec without delay. The Copyrights to all designs and drawings are the property of Stantec. Reproduction or use for any purpose other than that authorized by Stantec is forbidden.

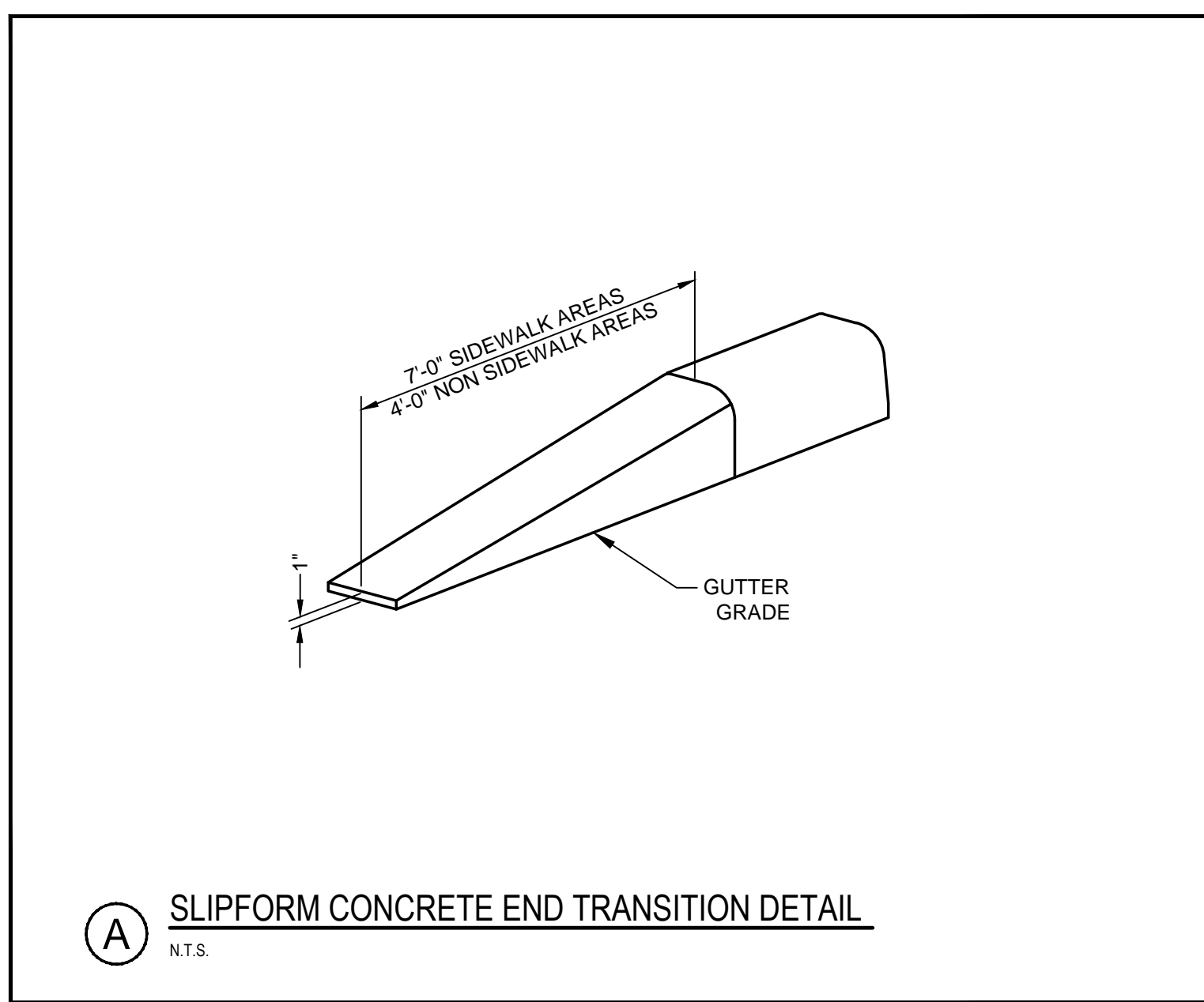
Consultants

Notes



NOTE:
USE NEAR VERTICAL MOLD WHEN ADJACENT TO SIDEWALK

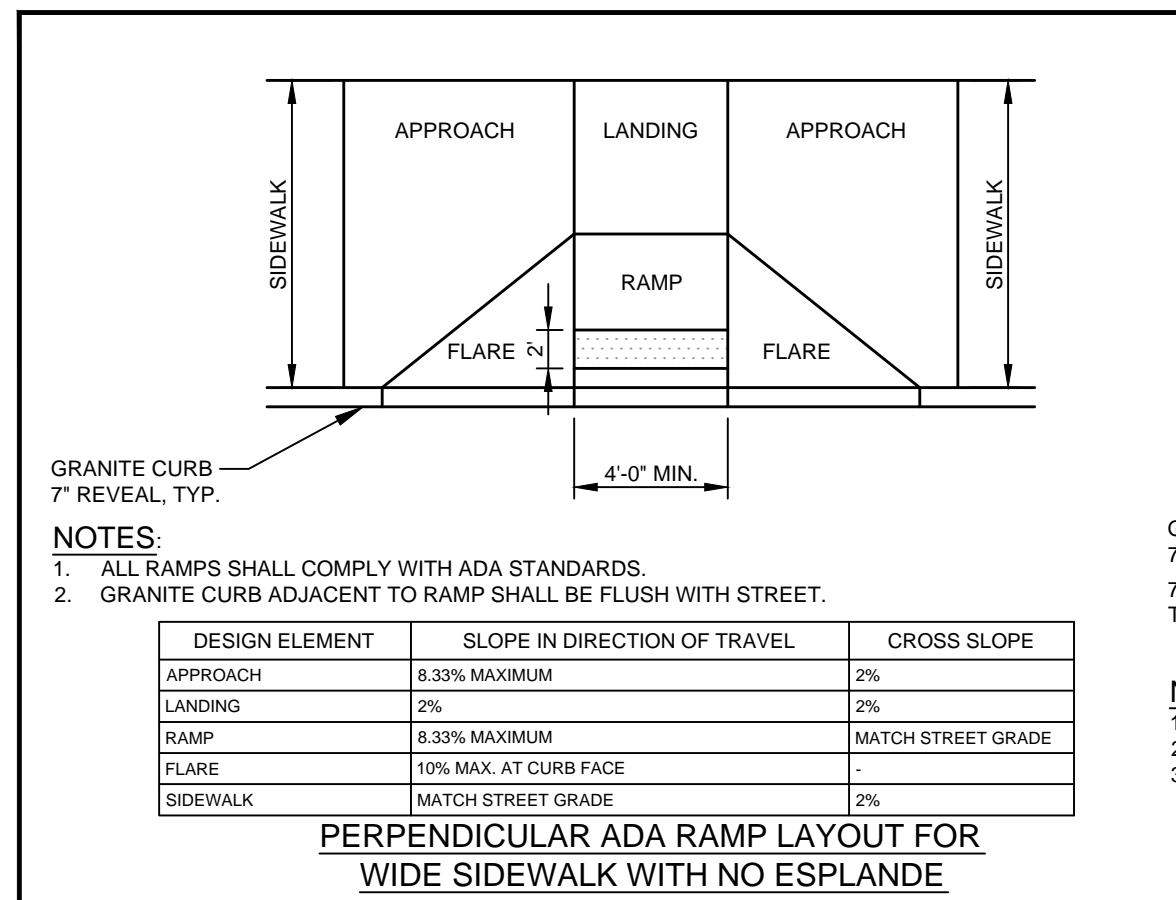
(A) SLIPFORM CONCRETE CURB DETAIL - SLOPED MOLD
N.T.S.



(A) SLIPFORM CONCRETE END TRANSITION DETAIL
N.T.S.



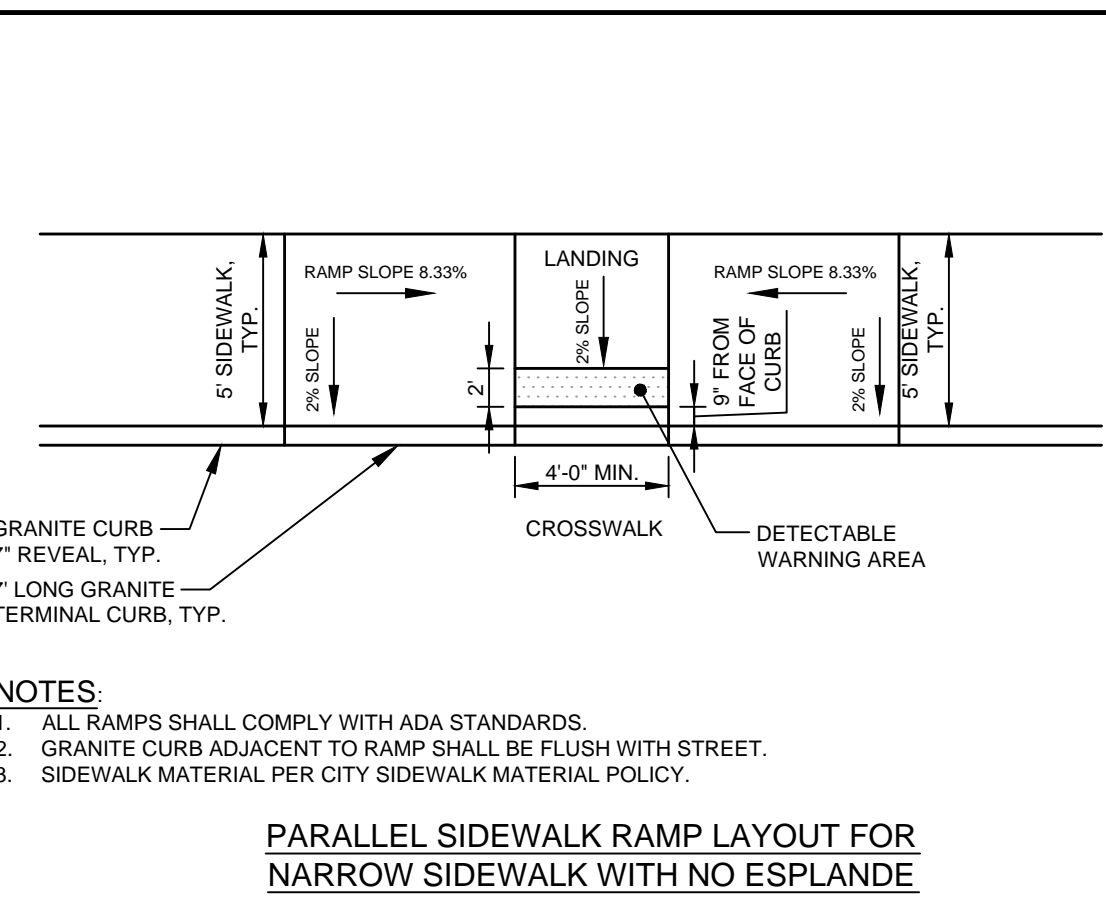
(C) N.T.S.



NOTES:
1. ALL RAMP SHALL COMPLY WITH ADA STANDARDS.
2. GRANITE CURB ADJACENT TO RAMP SHALL BE FLUSH WITH STREET.

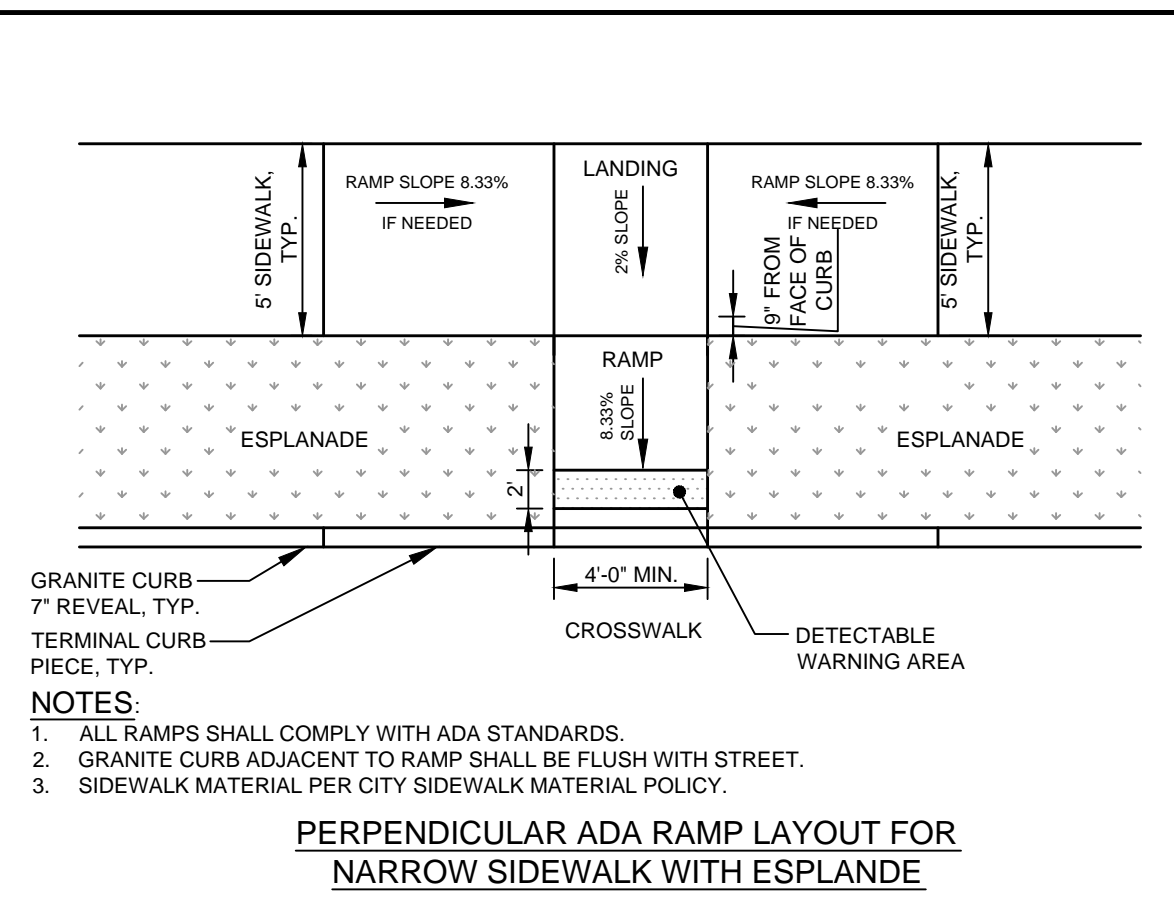
DESIGN ELEMENT	SLOPE IN DIRECTION OF TRAVEL	CROSS SLOPE
APPROACH	8.33% MAXIMUM	2%
LANDING	2%	2%
RAMP	8.33% MAXIMUM	MATCH STREET GRADE
FLARE	10% MAX. AT CURB FACE	
SIDEWALK	MATCH STREET GRADE	2%

PERPENDICULAR ADA RAMP LAYOUT FOR WIDE SIDEWALK WITH NO ESPLANADE



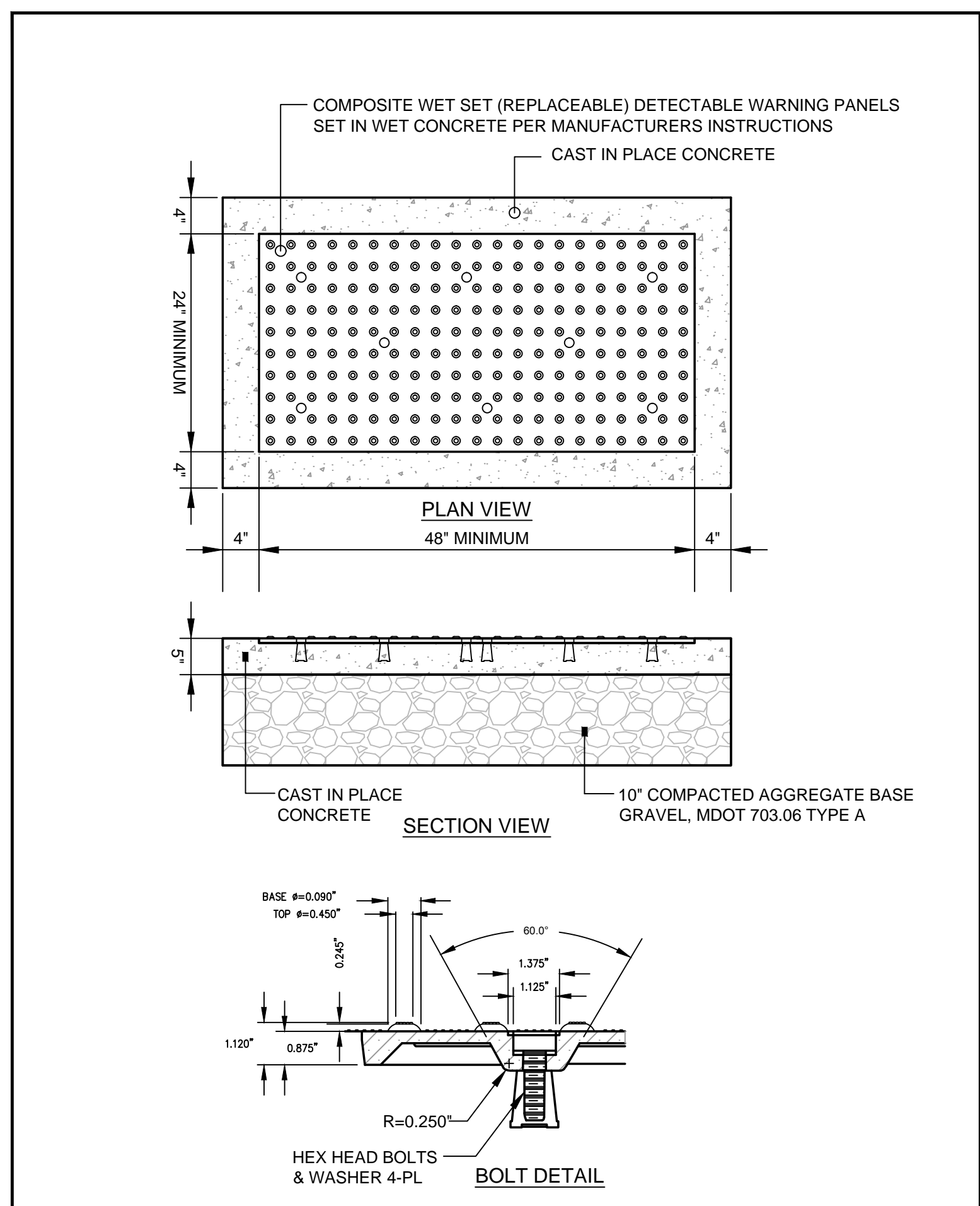
NOTES:
1. ALL RAMP SHALL COMPLY WITH ADA STANDARDS.
2. GRANITE CURB ADJACENT TO RAMP SHALL BE FLUSH WITH STREET.
3. SIDEWALK MATERIAL PER CITY SIDEWALK MATERIAL POLICY.

PARALLEL SIDEWALK RAMP LAYOUT FOR NARROW SIDEWALK WITH NO ESPLANADE



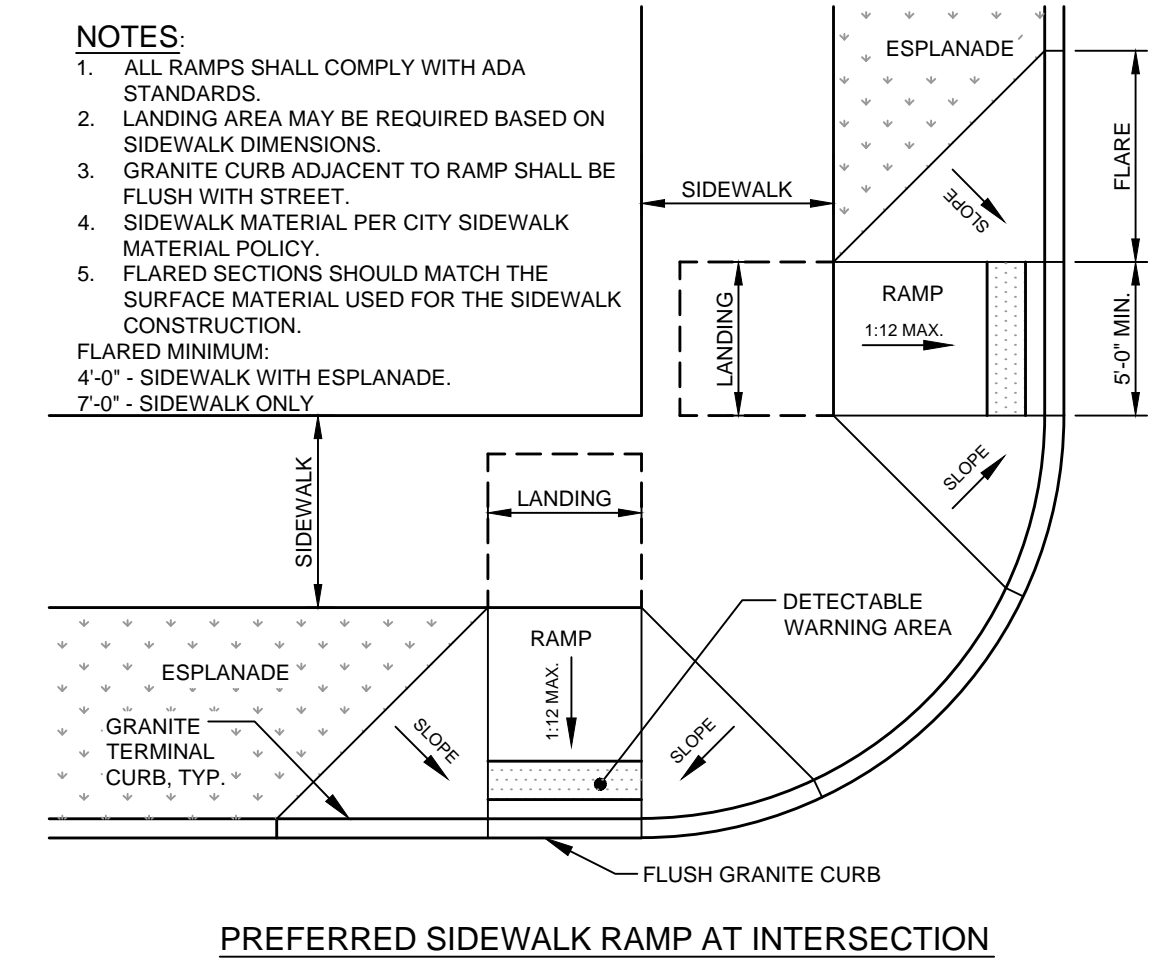
NOTES:
1. ALL RAMP SHALL COMPLY WITH ADA STANDARDS.
2. GRANITE CURB ADJACENT TO RAMP SHALL BE FLUSH WITH STREET.
3. SIDEWALK MATERIAL PER CITY SIDEWALK MATERIAL POLICY.

PERPENDICULAR ADA RAMP LAYOUT FOR NARROW SIDEWALK WITH ESPLANADE



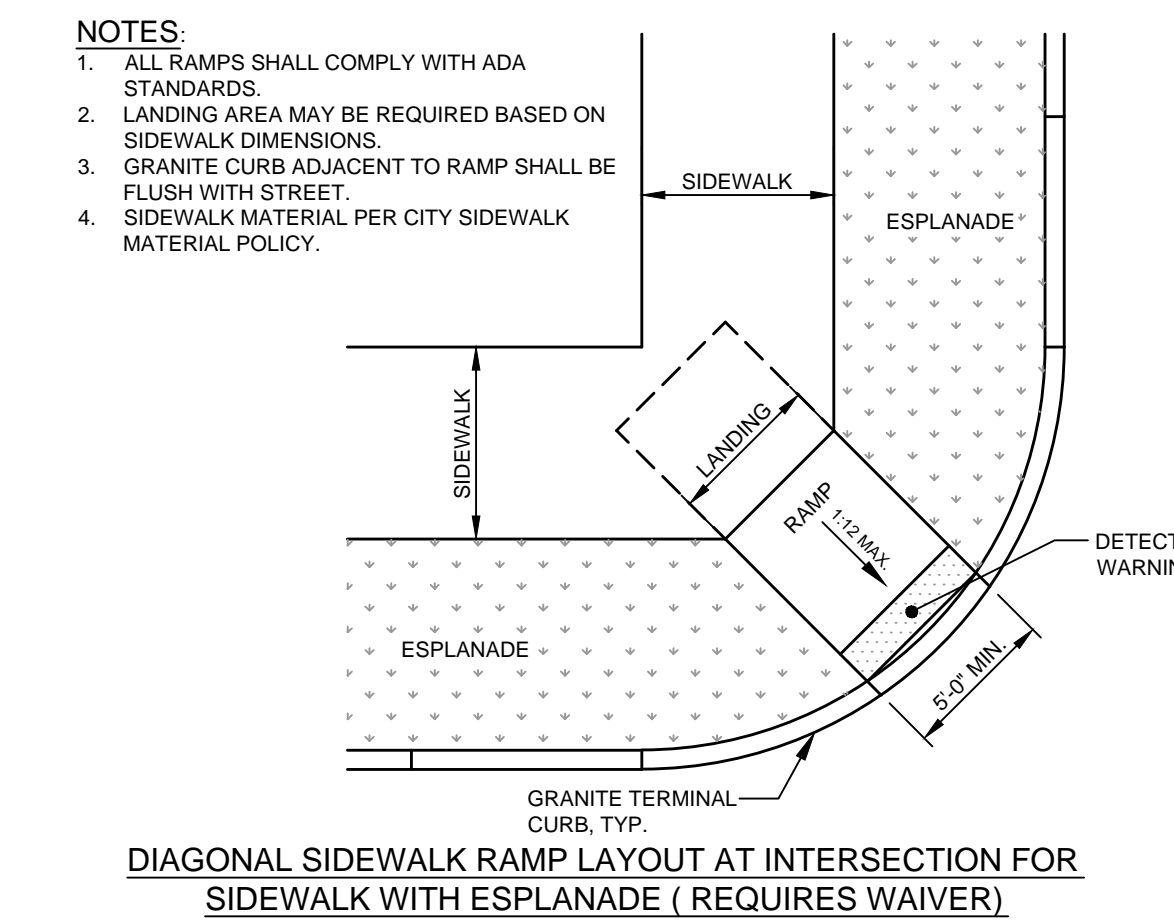
NOTES:
1. COMPOSITE WET SET (REPLACEABLE) DETECTABLE WARNING PANELS SHALL BE AS MANUFACTURED BY ADA SOLUTIONS, INC. (WWW.ADATILE.COM), OR APPROVED EQUAL.
2. CAST IN PLACE CONCRETE SHALL MEET SPECIFICATIONS FOR MAINE D.O.T. CLASS A STRUCTURAL CONCRETE, MINIMUM COMPRESSIVE STRENGTH 4,000 PSI. THE CONCRETE SHALL BE SEALED PRIOR TO SETTING PANELS. THE EXPOSED CONCRETE BORDER SHALL RECEIVE A GROOVED EDGE BETWEEN THE PANEL AND CONCRETE, ALONG WITH A UNIFORM BROOM FINISH PERPENDICULAR TO THE FLOW OF PEDESTRIAN TRAFFIC.
3. TRUNCATED DOMES SHALL BE ALIGNED IN ROWS, PARALLEL AND PERPENDICULAR TO THE PREDOMINANT DIRECTION OF TRAVEL. TRUNCATED DOME BRICKS AND GRANITE PAVERS ARE NOT ALLOWED.
4. FOR ALL DETECTABLE WARNING PANELS (EXCEPT AS SPECIFIED IN FIGURE 1-7A AND TECHNICAL MANUAL SECTION 1.8.4), FEDERAL YELLOW COLORED (#33538) PANELS SHALL BE USED. FOLLOW MANUFACTURER'S INSTRUCTIONS FOR INSTALLATION.
5. SIZE: THE DETECTABLE WARNING PANEL(S) SHALL EXTEND 24 INCHES MINIMUM IN THE DIRECTION OF TRAVEL AND THE FULL WIDTH OF THE CURB RAMP, LANDING, OR BLENDED TRANSITION TO THE STREET.
6. ORIENTATION: THE DETECTABLE WARNING PANEL SHALL BE LOCATED SO THAT THE EDGE NEAREST THE CURB LINE IS 6 INCHES MINIMUM AND 8 INCHES MAXIMUM FROM THE CURB LINE. THE PANEL SHALL BE ORIENTED TO THE DIRECTION OF TRAVEL AS IDENTIFIED BY THE POINT OF EGRESS.

(D) DETECTABLE WARNING PAVER DETAIL
N.T.S.



NOTES:
1. ALL RAMP SHALL COMPLY WITH ADA STANDARDS.
2. LANDING AREA MAY BE REQUIRED BASED ON SIDEWALK DIMENSIONS.
3. GRANITE CURB ADJACENT TO RAMP SHALL BE FLUSH WITH STREET.
4. SIDEWALK MATERIAL PER CITY SIDEWALK MATERIAL POLICY.
5. FLARED SECTIONS SHOULD MATCH THE SURFACE MATERIAL USED FOR THE SIDEWALK CONSTRUCTION.
FLARED MINIMUM:
4'-0\"/>

PREFERRED SIDEWALK RAMP AT INTERSECTION



NOTES:
1. ALL RAMP SHALL COMPLY WITH ADA STANDARDS.
2. LANDING AREA MAY BE REQUIRED BASED ON SIDEWALK DIMENSIONS.
3. GRANITE CURB ADJACENT TO RAMP SHALL BE FLUSH WITH STREET.
4. SIDEWALK MATERIAL PER CITY SIDEWALK MATERIAL POLICY.

DIAGONAL SIDEWALK RAMP LAYOUT AT INTERSECTION FOR SIDEWALK WITH ESPLANADE (REQUIRES WAIVER)

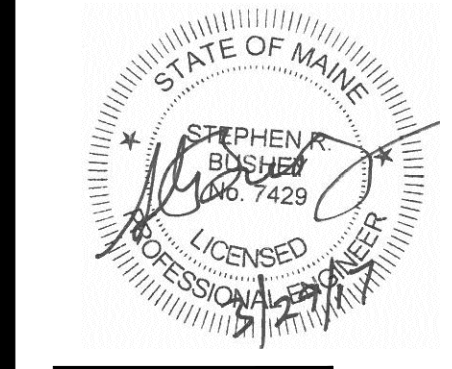
NOTE:
1. RAMP SHALL BE CONSTRUCTED IN ACCORDANCE WITH AMERICANS WITH DISABILITIES ACT (ADA).
2. ALL RAMP WITHIN THE CITY OF PORTLAND RIGHT-OF-WAY (SEWALL STREET AND THOMPSON POINT CONNECTOR ROAD) SHALL HAVE DETECTABLE WARNINGS THE FULL DEPTH AND WIDTH OF THE RAMP PER SECTION 4.29 OF THE ADA. DETECTABLE WARNINGS SHALL CONSIST OF RAISED TRUNCATED DOMES A DIAMETER OF 0.90 INCHES, A HEIGHT OF NOMINAL 0.20 INCHES AND A SPACING OF 2.35 INCHES CENTER TO CENTER. THESE SHALL CONTRAST VISUALLY WITH ADJOINING SURFACES.
3. A TACTILE WARNING STRIP IS REQUIRED WHERE RAMP ABUTS AREA USED BY MOTORIZED VEHICLES.
4. ALL TACTILE WARNING STRIPS SHALL BE SET PERPENDICULAR TO DIRECTION OF CROSS WALK.

(E) BARRIER FREE RAMP DETAILS
N.T.S.

SUBMITTED TO CITY FOR PRELIMINARY SITE PLAN APPLICATION
Revision
By: SRB
Appr.: YJAW/CD
17.03.29

File Name: 195350337 DETAILS	DED	SRB	SRB	16.11.29
	DWN.	CHKD.	DSGN.	DATE

Permit-Seal



Client/Project
BRUNER/COT

CHILDREN'S MUSEUM & THEATRE OF MAINE
THOMPSON'S POINT - PORTLAND, MAINE

Title
CURBING AND SIDEWALK DETAILS

Project No. 195350337	Scale AS NOTED
Sheet	

V:\195350337\civil\cad\permits\dwg\195350337_details.dwg pjilliams 3/29/2017 2:21 PM